

**USH 45: STH 145 TO CTH E (MILWAUKEE COUNTY)
NIGHTTIME CLOSURE
NO DIVERSION ROUTE (MAX QUEUE METHOD)**

OCTOBER

Analyzed for 2009
Construction Season

SUMMARY OF TRAFFIC MODEL OUTPUT

SUNDAY SOUTHBOUND DIRECTION

TIME OF DAY	FLOWS AND CAPACITY IN VEH/HR						AVERAGE SPEEDS IN MPH				
	MAIN ROUTE		SITE CAPA CITY	FLOW		AV.DEL PER VEH (MINS)	AVERAGE QUEUE (VEH)	MAIN ROUTE		SITE	
	DEMAND FLOW	PCT HEAVY		MAIN ROUTE	'DIVER TED'			WITHOUT WORK ZONE	WITH WORK ZONE		
MID-1 AM	595	0.0	3000	595	0	0.36	0	70.0	59.2	49.7	
1-2 AM	350	0.0	3000	350	0	0.36	0	70.2	59.3	49.7	
2-3 AM	270	0.0	3000	270	0	0.36	0	70.2	59.3	49.7	
3-4 AM	187	0.0	3000	187	0	0.36	0	70.2	59.3	49.7	
4-5 AM	200	0.0	3000	200	0	0.36	0	70.2	59.3	49.7	
5-6 AM	322	0.0	3000	322	0	0.36	0	70.2	59.3	49.7	
6-7 AM	617	0.0	3000	617	0	0.36	0	70.0	59.2	49.7	
7-8 AM	832	0.0	3000	832	0	0.35	0	69.7	59.1	49.7	
8-9 AM	1154	0.0	3000	1154	0	0.35	0	69.3	59.0	49.7	
9-10 AM	1902	0.0	OFF	1902	0	0.00	0	68.4	68.4	68.4	
10-11 AM	2374	0.0	OFF	2374	0	0.00	0	67.8	67.8	67.8	
11AM-NOON	2767	0.0	OFF	2767	0	0.00	0	67.3	67.3	67.3	
NOON-1PM	3185	0.0	OFF	3185	0	0.00	0	66.8	66.8	66.8	
1-2 PM	3335	0.0	OFF	3335	0	0.00	0	66.6	66.6	66.6	
2-3 PM	3203	0.0	OFF	3203	0	0.00	0	66.8	66.8	66.8	
3-4 PM	3404	0.0	OFF	3404	0	0.00	0	66.5	66.5	66.5	
4-5 PM	3288	0.0	OFF	3288	0	0.00	0	66.6	66.6	66.6	
5-6 PM	3046	0.0	OFF	3046	0	0.00	0	66.9	66.9	66.9	
6-7 PM	2834	0.0	OFF	2834	0	0.00	0	67.2	67.2	67.2	
7-8 PM	2249	0.0	3000	2249	0	0.33	0	67.9	58.4	49.7	
8-9 PM	1551	0.0	3000	1551	0	0.34	0	68.8	58.7	49.7	
9-10 PM	1111	0.0	3000	1111	0	0.35	0	69.4	59.0	49.7	
10-11 PM	748	0.0	3000	748	0	0.35	0	69.8	59.2	49.7	
11PM-MID	509	0.0	3000	509	0	0.36	0	70.1	59.3	49.7	

"OFF" INDICATES NO ROAD WORK (ALL LANES OPEN TO TRAFFIC)

----- SITE BREAKDOWN DELAYS -----	
BREAKDOWN DURATION (MINS)	0
RANGE OF QUEUE DELAY - MIN (VEH-H) MAX	0.0
AV BREAKDOWNS PER DAY	0.00
AV QUEUE DELAY/DAY (VEH-H)	0.0
AV TOTAL DELAY/DAY (VEH-H)	0.0

----- SITE ACCIDENT DELAYS -----	
BREAKDOWN DURATION (MINS)	0
RANGE OF QUEUE DELAY - MIN (VEH-H) MAX	0
AV BREAKDOWNS PER DAY	0
AV QUEUE DELAY/DAY (VEH-H)	0
AV TOTAL DELAY/DAY (VEH-H)	0

AVERAGE ACCIDENT NUMBERS (PIA/DAY)	
MAIN ROUTE WITHOUT WORKS	0.0146
MAIN ROUTE WITH WORKS	0.0139
'DIVERSION'	0.0000
PIA: Personal Injury Accidents	
IMPACTS ON ROAD USERS	
ROAD USER COSTS PER DAY	\$839
CONGESTED HOURS PER DAY*	0

*Delays Exceeding User-Specified Maximum

**USH 45: STH 145 TO CTH E (MILWAUKEE COUNTY)
NIGHTTIME CLOSURE
NO DIVERSION ROUTE (MAX QUEUE METHOD)**

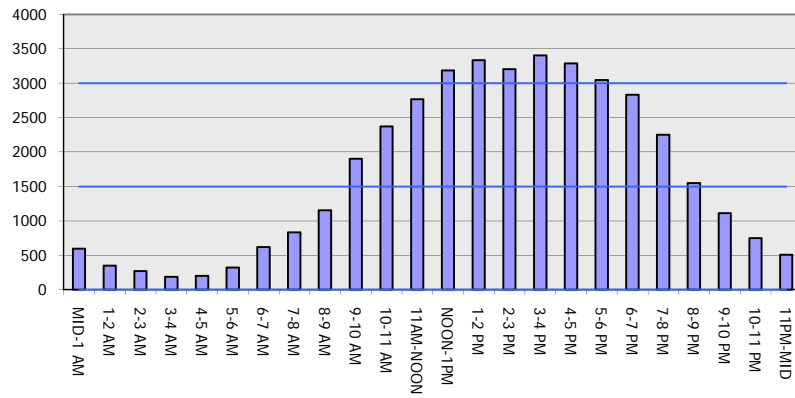
OCTOBER

Analyzed for 2009
Construction Season

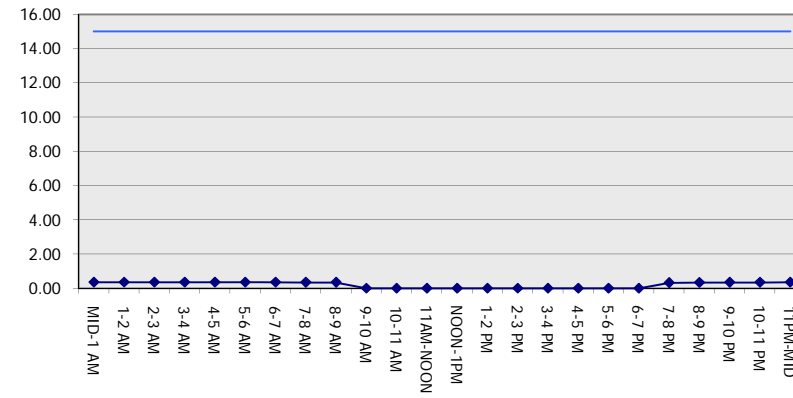
GRAPHICAL REPRESENTATION OF TRAFFIC MODEL INPUT AND OUTPUT

SUNDAY SOUTHBOUND DIRECTION

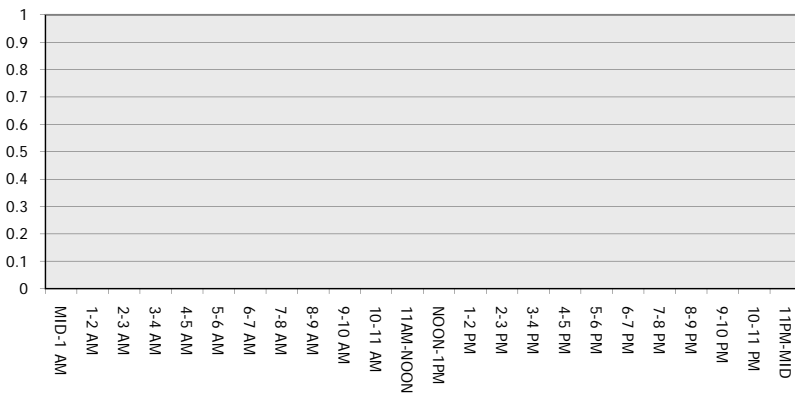
Main Route - Traffic Demand (Vehicles Per Hour)



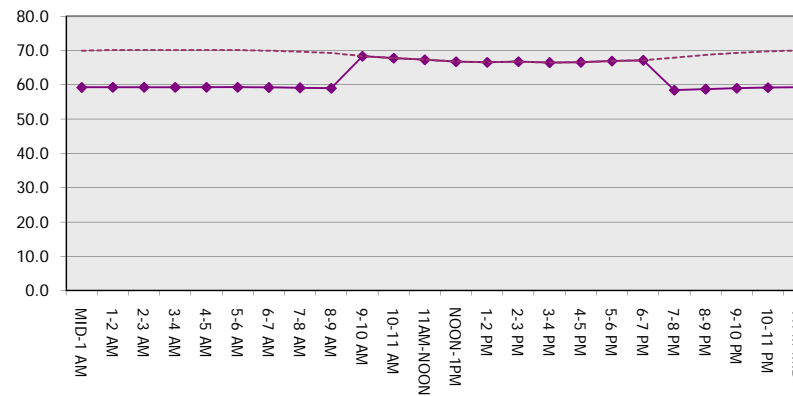
Main Route Average Delay Per Vehicle (Minutes)



Main Route - Average Queue Length (Vehicles)



Main Route - Average Speed (MPH)



USH 45: STH 145 TO CTH E (MILWAUKEE COUNTY) NIGHTTIME CLOSURE NO DIVERSION ROUTE (MAX QUEUE METHOD)	OCTOBER
	Analyzed for 2009 Construction Season

SUMMARY OF TRAFFIC MODEL OUTPUT

SUNDAY NORTHBOUND DIRECTION

TIME OF DAY	FLOWS AND CAPACITY IN VEH/HR						AVERAGE SPEEDS IN MPH			
	MAIN ROUTE		SITE CAPA CITY	FLOW		AV.DEL PER VEH (MINS)	AVERAGE QUEUE (VEH)	MAIN ROUTE		SITE
	DEMAND FLOW	PCT HEAVY		MAIN ROUTE	'DIVER TED'			WITHOUT WORK ZONE	WITH WORK ZONE	
MID-1 AM	783	0.0	3000	783	0	0.35	0	69.7	59.2	49.7
1-2 AM	452	0.0	3000	452	0	0.36	0	70.2	59.3	49.7
2-3 AM	404	0.0	3000	404	0	0.36	0	70.2	59.3	49.7
3-4 AM	258	0.0	3000	258	0	0.36	0	70.2	59.3	49.7
4-5 AM	207	0.0	3000	207	0	0.36	0	70.2	59.3	49.7
5-6 AM	360	0.0	3000	360	0	0.36	0	70.2	59.3	49.7
6-7 AM	558	0.0	3000	558	0	0.36	0	70.0	59.2	49.7
7-8 AM	908	0.0	3000	908	0	0.35	0	69.6	59.1	49.7
8-9 AM	1291	0.0	3000	1291	0	0.35	0	69.1	58.9	49.7
9-10 AM	1773	0.0	OFF	1773	0	0.00	0	68.6	68.6	68.6
10-11 AM	2273	0.0	OFF	2273	0	0.00	0	67.9	67.9	67.9
11AM-NOON	2665	0.0	OFF	2665	0	0.00	0	67.4	67.4	67.4
NOON-1PM	2986	0.0	OFF	2986	0	0.00	0	67.0	67.0	67.0
1-2 PM	2893	0.0	OFF	2893	0	0.00	0	67.1	67.1	67.1
2-3 PM	2817	0.0	OFF	2817	0	0.00	0	67.3	67.3	67.3
3-4 PM	3048	0.0	OFF	3048	0	0.00	0	66.9	66.9	66.9
4-5 PM	2894	0.0	OFF	2894	0	0.00	0	67.1	67.1	67.1
5-6 PM	2636	0.0	OFF	2636	0	0.00	0	67.4	67.4	67.4
6-7 PM	2239	0.0	OFF	2239	0	0.00	0	67.9	67.9	67.9
7-8 PM	1856	0.0	3000	1856	0	0.34	0	68.4	58.6	49.7
8-9 PM	1376	0.0	3000	1376	0	0.34	0	69.0	58.9	49.7
9-10 PM	1102	0.0	3000	1102	0	0.35	0	69.4	59.0	49.7
10-11 PM	1017	0.0	3000	1017	0	0.35	0	69.5	59.1	49.7
11PM-MID	609	0.0	3000	609	0	0.36	0	70.0	59.2	49.7

"OFF" INDICATES NO ROAD WORK (ALL LANES OPEN TO TRAFFIC)

----- SITE BREAKDOWN DELAYS -----	
BREAKDOWN DURATION (MINS)	0
RANGE OF QUEUE DELAY - MIN (VEH-H) MAX	0.0
AV BREAKDOWNS PER DAY	0.00
AV QUEUE DELAY/DAY (VEH-H)	0.0
AV TOTAL DELAY/DAY (VEH-H)	0.0

----- SITE ACCIDENT DELAYS -----	
BREAKDOWN DURATION (MINS)	0
RANGE OF QUEUE DELAY - MIN (VEH-H) MAX	0
AV BREAKDOWNS PER DAY	0
AV QUEUE DELAY/DAY (VEH-H)	0
AV TOTAL DELAY/DAY (VEH-H)	0

AVERAGE ACCIDENT NUMBERS (PIA/DAY)	
MAIN ROUTE WITHOUT WORKS	0.0137
MAIN ROUTE WITH WORKS	0.0129
'DIVERSION'	0.0000
<small>PIA: Personal Injury Accidents</small>	
ECONOMIC IMPACT ON ROAD USERS	
ROAD USER COSTS PER DAY	\$883
CONGESTED HOURS PER DAY*	0

*Delays Exceeding User-Specified Maximum

**USH 45: STH 145 TO CTH E (MILWAUKEE COUNTY)
NIGHTTIME CLOSURE
NO DIVERSION ROUTE (MAX QUEUE METHOD)**

OCTOBER

Analyzed for 2009
Construction Season

GRAPHICAL REPRESENTATION OF TRAFFIC MODEL INPUT AND OUTPUT
SUNDAY NORTHBOUND DIRECTION

