

**USH 45: STH 145 TO CTH E (MILWAUKEE COUNTY)
NIGHTTIME CLOSURE
NO DIVERSION ROUTE (MAX QUEUE METHOD)**

OCTOBER
Analyzed for 2009
Construction Season

SUMMARY OF TRAFFIC MODEL OUTPUT

SATURDAY SOUTHBOUND DIRECTION

TIME OF DAY	FLOWS AND CAPACITY IN VEH/HR						AVERAGE SPEEDS IN MPH			
	MAIN ROUTE		SITE CAPA CITY	FLOW		AV.DEL PER VEH (MINS)	AVERAGE QUEUE (VEH)	MAIN ROUTE		SITE
	DEMAND FLOW	PCT HEAVY		MAIN ROUTE	'DIVER TED'			WITHOUT WORK ZONE	WITH WORK ZONE	
MID-1 AM	548	0.0	3000	548	0	0.36	0	70.0	59.3	49.7
1-2 AM	329	0.0	3000	329	0	0.36	0	70.2	59.3	49.7
2-3 AM	251	0.0	3000	251	0	0.36	0	70.2	59.3	49.7
3-4 AM	280	0.0	3000	280	0	0.36	0	70.2	59.3	49.7
4-5 AM	380	0.0	3000	380	0	0.36	0	70.2	59.3	49.7
5-6 AM	686	0.0	3000	686	0	0.36	0	69.9	59.2	49.7
6-7 AM	1193	0.0	3000	1193	0	0.35	0	69.2	58.9	49.7
7-8 AM	1797	0.0	3000	1797	0	0.34	0	68.5	58.6	49.7
8-9 AM	2362	0.0	OFF	2362	0	0.00	0	67.8	67.8	67.8
9-10 AM	2800	0.0	OFF	2800	0	0.00	0	67.3	67.3	67.3
10-11 AM	3245	0.0	OFF	3245	0	0.00	0	66.7	66.7	66.7
11AM-NOON	3277	0.0	OFF	3277	0	0.00	0	66.6	66.6	66.6
NOON-1PM	3533	0.0	OFF	3533	0	0.00	0	66.3	66.3	66.3
1-2 PM	3203	0.0	OFF	3203	0	0.00	0	66.8	66.8	66.8
2-3 PM	3320	0.0	OFF	3320	0	0.00	0	66.6	66.6	66.6
3-4 PM	3348	0.0	OFF	3348	0	0.00	0	66.6	66.6	66.6
4-5 PM	3201	0.0	OFF	3201	0	0.00	0	66.8	66.8	66.8
5-6 PM	2971	0.0	OFF	2971	0	0.00	0	67.1	67.1	67.1
6-7 PM	2529	0.0	3000	2529	0	0.42	0	67.6	56.0	46.1
7-8 PM	2036	0.0	3000	2036	0	0.33	0	68.2	58.6	49.7
8-9 PM	1611	0.0	3000	1611	0	0.34	0	68.7	58.7	49.7
9-10 PM	1466	0.0	3000	1466	0	0.34	0	68.9	58.8	49.7
10-11 PM	1165	0.0	3000	1165	0	0.35	0	69.3	59.0	49.7
11PM-MID	904	0.0	3000	904	0	0.35	0	69.6	59.1	49.7

"OFF" INDICATES NO ROAD WORK (ALL LANES OPEN TO TRAFFIC)

----- SITE BREAKDOWN DELAYS -----	
BREAKDOWN DURATION (MINS)	0
RANGE OF QUEUE DELAY - MIN (VEH-H) MAX	0.0
AV BREAKDOWNS PER DAY	0.00
AV QUEUE DELAY/DAY (VEH-H)	0.0
AV TOTAL DELAY/DAY (VEH-H)	0.0

----- SITE ACCIDENT DELAYS -----	
BREAKDOWN DURATION (MINS)	0
RANGE OF QUEUE DELAY - MIN (VEH-H) MAX	0
AV BREAKDOWNS PER DAY	0
AV QUEUE DELAY/DAY (VEH-H)	0
AV TOTAL DELAY/DAY (VEH-H)	0

AVERAGE ACCIDENT NUMBERS (PIA/DAY)	
MAIN ROUTE WITHOUT WORKS	0.0170
MAIN ROUTE WITH WORKS	0.0160
'DIVERSION'	0.0000
PIA: Personal Injury Accidents	
IMPACTS ON ROAD USERS	
ROAD USER COSTS PER DAY	\$1,232
CONGESTED HOURS PER DAY*	0

*Delays Exceeding User-Specified Maximum

**USH 45: STH 145 TO CTH E (MILWAUKEE COUNTY)
NIGHTTIME CLOSURE
NO DIVERSION ROUTE (MAX QUEUE METHOD)**

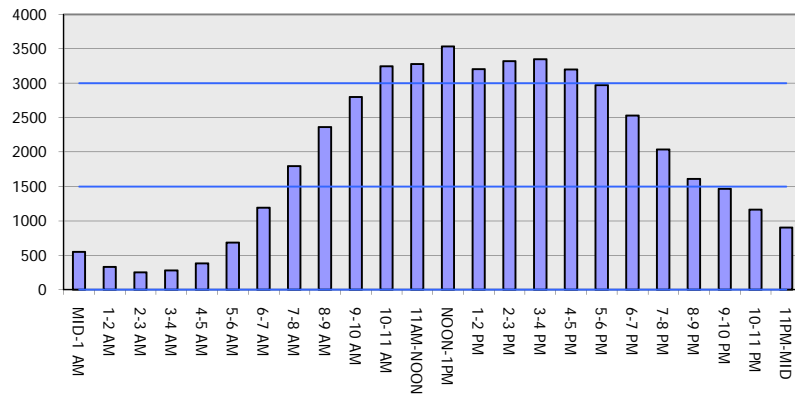
OCTOBER

Analyzed for 2009
Construction Season

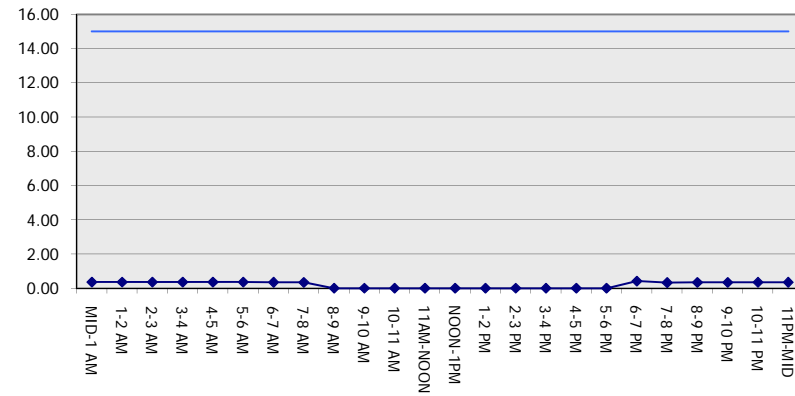
GRAPHICAL REPRESENTATION OF TRAFFIC MODEL INPUT AND OUTPUT

SATURDAY SOUTHBOUND DIRECTION

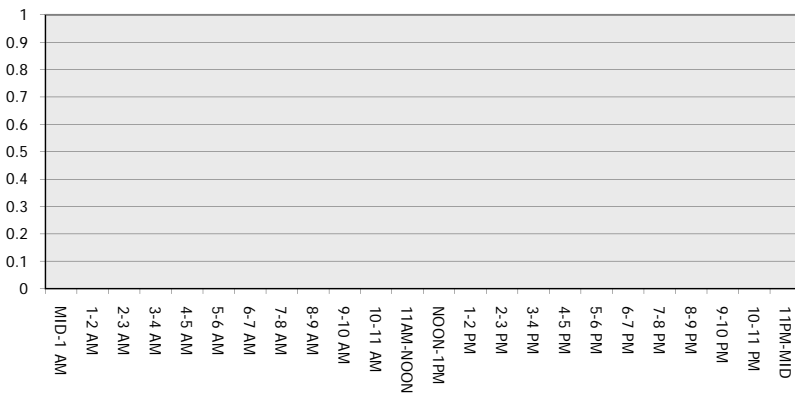
Main Route - Traffic Demand (Vehicles Per Hour)



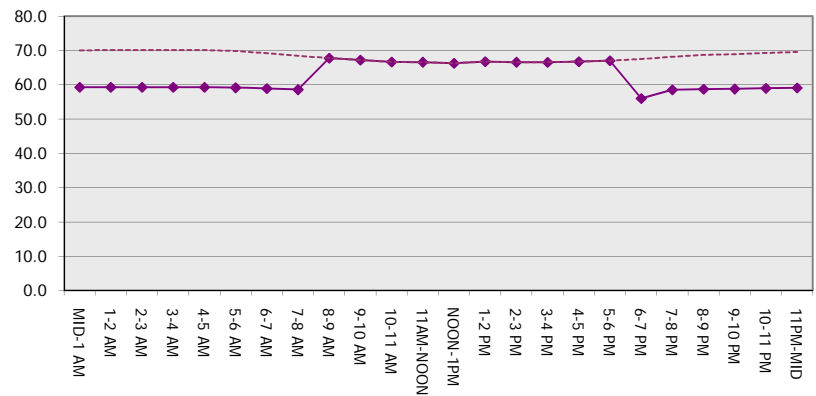
Main Route Average Delay Per Vehicle (Minutes)



Main Route - Average Queue Length (Vehicles)



Main Route - Average Speed (MPH)



USH 45: STH 145 TO CTH E (MILWAUKEE COUNTY) NIGHTTIME CLOSURE NO DIVERSION ROUTE (MAX QUEUE METHOD)	OCTOBER
	Analyzed for 2009 Construction Season

SUMMARY OF TRAFFIC MODEL OUTPUT

SATURDAY NORTHBOUND DIRECTION

TIME OF DAY	FLOWS AND CAPACITY IN VEH/HR						AVERAGE SPEEDS IN MPH			
	MAIN ROUTE		SITE CAPA CITY	FLOW		AV.DEL PER VEH (MINS)	AVERAGE QUEUE (VEH)	MAIN ROUTE		SITE
	DEMAND FLOW	PCT HEAVY		MAIN ROUTE	'DIVER TED'			WITHOUT WORK ZONE	WITH WORK ZONE	
MID-1 AM	757	0.0	3000	757	0	0.35	0	69.8	59.2	49.7
1-2 AM	450	0.0	3000	450	0	0.36	0	70.2	59.3	49.7
2-3 AM	394	0.0	3000	394	0	0.36	0	70.2	59.3	49.7
3-4 AM	334	0.0	3000	334	0	0.36	0	70.2	59.3	49.7
4-5 AM	429	0.0	3000	429	0	0.36	0	70.2	59.3	49.7
5-6 AM	774	0.0	3000	774	0	0.35	0	69.8	59.2	49.7
6-7 AM	1202	0.0	3000	1202	0	0.35	0	69.2	58.9	49.7
7-8 AM	1735	0.0	3000	1735	0	0.34	0	68.6	58.7	49.7
8-9 AM	2295	0.0	OFF	2295	0	0.00	0	67.9	67.9	67.9
9-10 AM	2653	0.0	OFF	2653	0	0.00	0	67.4	67.4	67.4
10-11 AM	3046	0.0	OFF	3046	0	0.00	0	66.9	66.9	66.9
11AM-NOON	3367	0.0	OFF	3367	0	0.00	0	66.6	66.6	66.6
NOON-1PM	3511	0.0	OFF	3511	0	0.00	0	66.4	66.4	66.4
1-2 PM	3424	0.0	OFF	3424	0	0.00	0	66.5	66.5	66.5
2-3 PM	3441	0.0	OFF	3441	0	0.00	0	66.4	66.4	66.4
3-4 PM	3490	0.0	OFF	3490	0	0.00	0	66.4	66.4	66.4
4-5 PM	3267	0.0	OFF	3267	0	0.00	0	66.7	66.7	66.7
5-6 PM	2949	0.0	OFF	2949	0	0.00	0	67.1	67.1	67.1
6-7 PM	2574	0.0	3000	2574	0	0.45	0	67.6	55.3	45.1
7-8 PM	2176	0.0	3000	2176	0	0.33	0	68.0	58.4	49.7
8-9 PM	1875	0.0	3000	1875	0	0.34	0	68.4	58.6	49.7
9-10 PM	1764	0.0	3000	1764	0	0.34	0	68.6	58.7	49.7
10-11 PM	1558	0.0	3000	1558	0	0.34	0	68.8	58.7	49.7
11PM-MID	1157	0.0	3000	1157	0	0.35	0	69.3	59.0	49.7

"OFF" INDICATES NO ROAD WORK (ALL LANES OPEN TO TRAFFIC)

----- SITE BREAKDOWN DELAYS -----	
BREAKDOWN DURATION (MINS)	0
RANGE OF QUEUE DELAY - MIN (VEH-H) MAX	0.0
AV BREAKDOWNS PER DAY	0.00
AV QUEUE DELAY/DAY (VEH-H)	0.0
AV TOTAL DELAY/DAY (VEH-H)	0.0

----- SITE ACCIDENT DELAYS -----	
BREAKDOWN DURATION (MINS)	0
RANGE OF QUEUE DELAY - MIN (VEH-H) MAX	0
AV BREAKDOWNS PER DAY	0
AV QUEUE DELAY/DAY (VEH-H)	0
AV TOTAL DELAY/DAY (VEH-H)	0

AVERAGE ACCIDENT NUMBERS (PIA/DAY)	
MAIN ROUTE WITHOUT WORKS	0.0178
MAIN ROUTE WITH WORKS	0.0167
'DIVERSION'	0.0000

PIA: Personal Injury Accidents

ECONOMIC IMPACT ON ROAD USERS	
ROAD USER COSTS PER DAY	\$1,403
CONGESTED HOURS PER DAY*	0

*Delays Exceeding User-Specified Maximum

**USH 45: STH 145 TO CTH E (MILWAUKEE COUNTY)
NIGHTTIME CLOSURE
NO DIVERSION ROUTE (MAX QUEUE METHOD)**

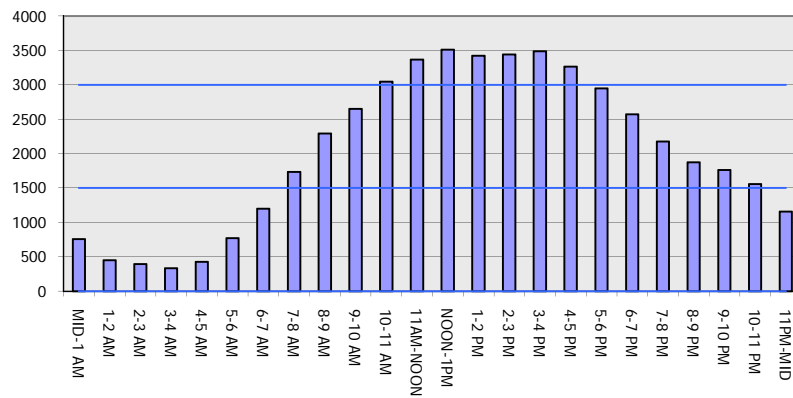
OCTOBER

Analyzed for 2009
Construction Season

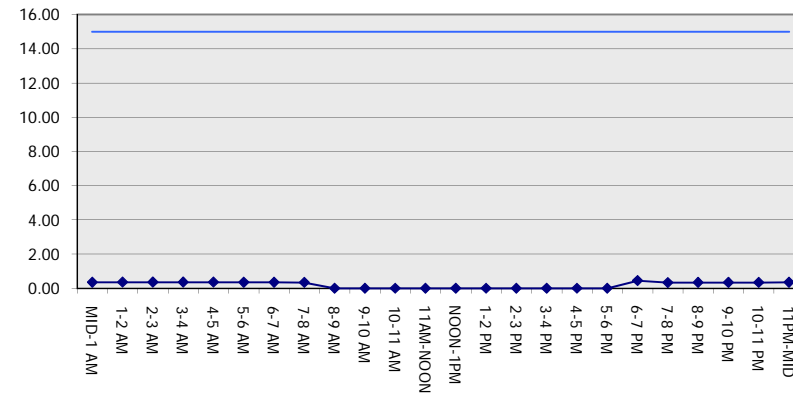
GRAPHICAL REPRESENTATION OF TRAFFIC MODEL INPUT AND OUTPUT

SATURDAY NORTHBOUND DIRECTION

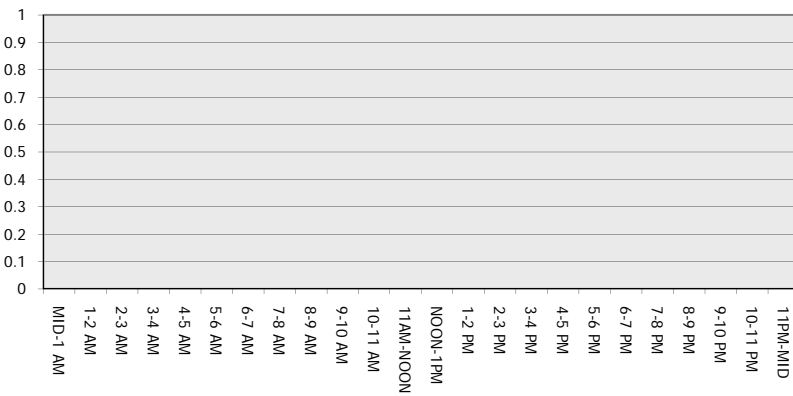
Main Route - Traffic Demand (Vehicles Per Hour)



Main Route Average Delay Per Vehicle (Minutes)



Main Route - Average Queue Length (Vehicles)



Main Route - Average Speed (MPH)

