

USH 45: STH 145 TO CTH E (MILWAUKEE COUNTY) NIGHTTIME CLOSURE NO DIVERSION ROUTE (MAX QUEUE METHOD)	OCTOBER
	Analyzed for 2009 Construction Season

SUMMARY OF TRAFFIC MODEL OUTPUT

MON-THUR SOUTHBOUND DIRECTION

TIME OF DAY	FLOWS AND CAPACITY IN VEH/HR						AVERAGE SPEEDS IN MPH			
	MAIN ROUTE		SITE CAPA CITY	FLOW		AV.DEL PER VEH (MINS)	AVERAGE QUEUE (VEH)	MAIN ROUTE		SITE
	DEMAND FLOW	PCT HEAVY		MAIN ROUTE	'DIVER TED'			WITHOUT WORK ZONE	WITH WORK ZONE	
MID-1 AM	345	0.0	3000	345	0	0.36	0	70.2	59.3	49.7
1-2 AM	260	0.0	3000	260	0	0.36	0	70.2	59.3	49.7
2-3 AM	266	0.0	3000	266	0	0.36	0	70.2	59.3	49.7
3-4 AM	371	0.0	3000	371	0	0.36	0	70.2	59.3	49.7
4-5 AM	745	0.0	3000	745	0	0.35	0	69.8	59.2	49.7
5-6 AM	2210	0.0	OFF	2210	0	0.00	0	68.0	68.0	68.0
6-7 AM	4736	0.0	OFF	4736	0	0.00	0	58.5	58.5	58.5
7-8 AM	5611	0.0	OFF	5611	0	0.00	0	52.5	52.5	52.5
8-9 AM	4433	0.0	OFF	4433	0	0.00	0	60.5	60.5	60.5
9-10 AM	3325	0.0	OFF	3325	0	0.00	0	66.6	66.6	66.6
10-11 AM	3072	0.0	OFF	3072	0	0.00	0	66.9	66.9	66.9
11AM-NOON	3177	0.0	OFF	3177	0	0.00	0	66.8	66.8	66.8
NOON-1PM	3217	0.0	OFF	3217	0	0.00	0	66.8	66.8	66.8
1-2 PM	3261	0.0	OFF	3261	0	0.00	0	66.7	66.7	66.7
2-3 PM	3881	0.0	OFF	3881	0	0.00	0	64.3	64.3	64.3
3-4 PM	4312	0.0	OFF	4312	0	0.00	0	61.4	61.4	61.4
4-5 PM	4285	0.0	OFF	4285	0	0.00	0	61.6	61.6	61.6
5-6 PM	4129	0.0	OFF	4129	0	0.00	0	62.7	62.7	62.7
6-7 PM	3075	0.0	OFF	3075	0	0.00	0	66.9	66.9	66.9
7-8 PM	1966	0.0	3000	1966	0	0.34	0	68.3	58.6	49.7
8-9 PM	1504	0.0	3000	1504	0	0.34	0	68.9	58.8	49.7
9-10 PM	1312	0.0	3000	1312	0	0.35	0	69.1	58.9	49.7
10-11 PM	950	0.0	3000	950	0	0.35	0	69.6	59.1	49.7
11PM-MID	854	0.0	3000	854	0	0.35	0	69.7	59.1	49.7

"OFF" INDICATES NO ROAD WORK (ALL LANES OPEN TO TRAFFIC)

----- SITE BREAKDOWN DELAYS -----	
BREAKDOWN DURATION (MINS)	0
RANGE OF QUEUE DELAY - MIN (VEH-H) MAX	0.0
AV BREAKDOWNS PER DAY	0.00
AV QUEUE DELAY/DAY (VEH-H)	0.0
AV TOTAL DELAY/DAY (VEH-H)	0.0

----- SITE ACCIDENT DELAYS -----	
BREAKDOWN DURATION (MINS)	0
RANGE OF QUEUE DELAY - MIN (VEH-H) MAX	0
AV BREAKDOWNS PER DAY	0
AV QUEUE DELAY/DAY (VEH-H)	0
AV TOTAL DELAY/DAY (VEH-H)	0

AVERAGE ACCIDENT NUMBERS (PIA/DAY)	
MAIN ROUTE WITHOUT WORKS	0.0224
MAIN ROUTE WITH WORKS	0.0219
'DIVERSION'	0.0000
PIA: Personal Injury Accidents	
IMPACTS ON ROAD USERS	
ROAD USER COSTS PER DAY	\$588
CONGESTED HOURS PER DAY*	0

*Delays Exceeding User-Specified Maximum

**USH 45: STH 145 TO CTH E (MILWAUKEE COUNTY)
NIGHTTIME CLOSURE
NO DIVERSION ROUTE (MAX QUEUE METHOD)**

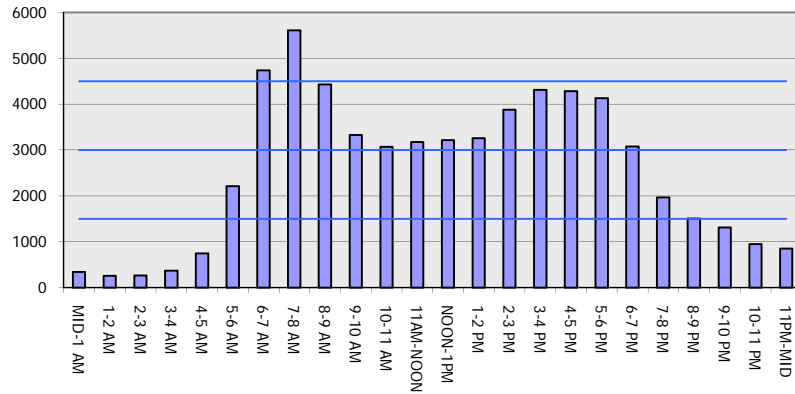
OCTOBER

Analyzed for 2009
Construction Season

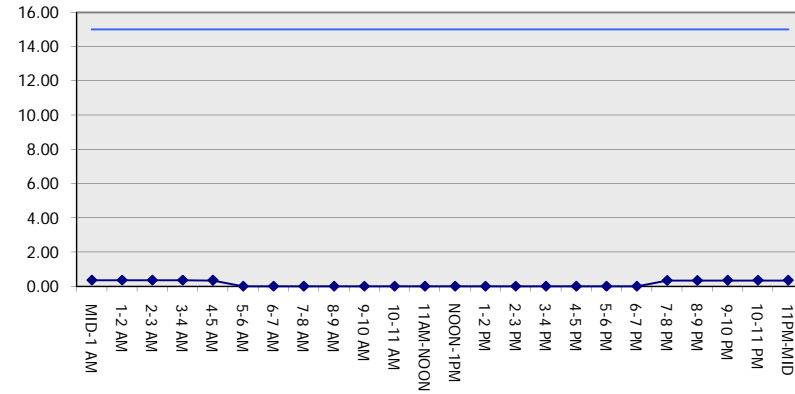
GRAPHICAL REPRESENTATION OF TRAFFIC MODEL INPUT AND OUTPUT

MON-THUR SOUTHBOUND DIRECTION

Main Route - Traffic Demand (Vehicles Per Hour)



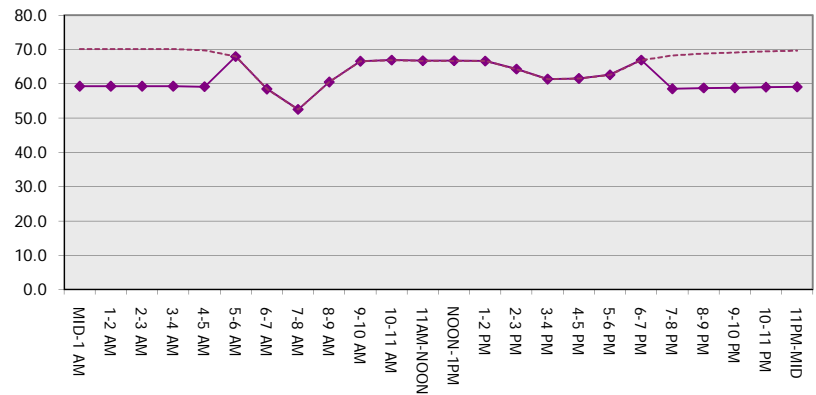
Main Route Average Delay Per Vehicle (Minutes)



Main Route - Average Queue Length (Vehicles)



Main Route - Average Speed (MPH)



USH 45: STH 145 TO CTH E (MILWAUKEE COUNTY) NIGHTTIME CLOSURE NO DIVERSION ROUTE (MAX QUEUE METHOD)	OCTOBER
	Analyzed for 2009 Construction Season

SUMMARY OF TRAFFIC MODEL OUTPUT

MON-THUR NORTHBOUND DIRECTION

TIME OF DAY	FLOWS AND CAPACITY IN VEH/HR						AVERAGE SPEEDS IN MPH			
	MAIN ROUTE		SITE CAPA CITY	FLOW		AV.DEL PER VEH (MINS)	AVERAGE QUEUE (VEH)	MAIN ROUTE		SITE
	DEMAND FLOW	PCT HEAVY		MAIN ROUTE	'DIVER TED'			WITHOUT WORK ZONE	WITH WORK ZONE	
MID-1 AM	421	0.0	3000	421	0	0.36	0	70.2	59.3	49.7
1-2 AM	290	0.0	3000	290	0	0.36	0	70.2	59.3	49.7
2-3 AM	270	0.0	3000	270	0	0.36	0	70.2	59.3	49.7
3-4 AM	332	0.0	3000	332	0	0.36	0	70.2	59.3	49.7
4-5 AM	678	0.0	3000	678	0	0.36	0	69.9	59.2	49.7
5-6 AM	2001	0.0	OFF	2001	0	0.00	0	68.2	68.2	68.2
6-7 AM	3822	0.0	OFF	3822	0	0.00	0	64.8	64.8	64.8
7-8 AM	4904	0.0	OFF	4904	0	0.00	0	57.4	57.4	57.4
8-9 AM	4096	0.0	OFF	4096	0	0.00	0	62.8	62.8	62.8
9-10 AM	2901	0.0	OFF	2901	0	0.00	0	67.1	67.1	67.1
10-11 AM	2815	0.0	OFF	2815	0	0.00	0	67.3	67.3	67.3
11AM-NOON	2939	0.0	OFF	2939	0	0.00	0	67.1	67.1	67.1
NOON-1PM	3187	0.0	OFF	3187	0	0.00	0	66.8	66.8	66.8
1-2 PM	3422	0.0	OFF	3422	0	0.00	0	66.5	66.5	66.5
2-3 PM	4265	0.0	OFF	4265	0	0.00	0	61.7	61.7	61.7
3-4 PM	5159	0.0	OFF	5159	0	0.00	0	55.6	55.6	55.6
4-5 PM	5848	0.0	OFF	5848	0	0.00	0	50.9	50.9	50.9
5-6 PM	5627	0.0	OFF	5627	0	0.00	0	52.4	52.4	52.4
6-7 PM	3613	0.0	OFF	3613	0	0.00	0	66.2	66.2	66.2
7-8 PM	2361	0.0	3000	2361	0	0.33	0	67.8	58.4	49.7
8-9 PM	1972	0.0	3000	1972	0	0.34	0	68.3	58.6	49.7
9-10 PM	1790	0.0	3000	1790	0	0.34	0	68.5	58.7	49.7
10-11 PM	1385	0.0	3000	1385	0	0.34	0	69.0	58.9	49.7
11PM-MID	829	0.0	3000	829	0	0.35	0	69.7	59.1	49.7

"OFF" INDICATES NO ROAD WORK (ALL LANES OPEN TO TRAFFIC)

----- SITE BREAKDOWN DELAYS -----	
BREAKDOWN DURATION (MINS)	0
RANGE OF QUEUE DELAY - MIN (VEH-H) MAX	0.0
AV BREAKDOWNS PER DAY	0.00
AV QUEUE DELAY/DAY (VEH-H)	0.0
AV TOTAL DELAY/DAY (VEH-H)	0.0

----- SITE ACCIDENT DELAYS -----	
BREAKDOWN DURATION (MINS)	0
RANGE OF QUEUE DELAY - MIN (VEH-H) MAX	0
AV BREAKDOWNS PER DAY	0
AV QUEUE DELAY/DAY (VEH-H)	0
AV TOTAL DELAY/DAY (VEH-H)	0

AVERAGE ACCIDENT NUMBERS (PIA/DAY)	
MAIN ROUTE WITHOUT WORKS	0.0238
MAIN ROUTE WITH WORKS	0.0231
'DIVERSION'	0.0000

PIA: Personal Injury Accidents

ECONOMIC IMPACT ON ROAD USERS	
ROAD USER COSTS PER DAY	\$698
CONGESTED HOURS PER DAY*	0

*Delays Exceeding User-Specified Maximum

**USH 45: STH 145 TO CTH E (MILWAUKEE COUNTY)
NIGHTTIME CLOSURE
NO DIVERSION ROUTE (MAX QUEUE METHOD)**

OCTOBER

Analyzed for 2009
Construction Season

**GRAPHICAL REPRESENTATION OF TRAFFIC MODEL INPUT AND OUTPUT
MON-THUR NORTHBOUND DIRECTION**

