

USH 45: STH 145 TO CTH E (MILWAUKEE COUNTY) NIGHTTIME CLOSURE NO DIVERSION ROUTE (MAX QUEUE METHOD)	OCTOBER
	Analyzed for 2009 Construction Season

SUMMARY OF TRAFFIC MODEL OUTPUT

FRIDAY SOUTHBOUND DIRECTION

TIME OF DAY	FLOWS AND CAPACITY IN VEH/HR						AVERAGE SPEEDS IN MPH			
	MAIN ROUTE		SITE CAPA CITY	FLOW		AV.DEL PER VEH (MINS)	AVERAGE QUEUE (VEH)	MAIN ROUTE		SITE
	DEMAND FLOW	PCT HEAVY		MAIN ROUTE	'DIVER TED'			WITHOUT WORK ZONE	WITH WORK ZONE	
MID-1 AM	390	0.0	3000	390	0	0.36	0	70.2	59.3	49.7
1-2 AM	281	0.0	3000	281	0	0.36	0	70.2	59.3	49.7
2-3 AM	283	0.0	3000	283	0	0.36	0	70.2	59.3	49.7
3-4 AM	376	0.0	3000	376	0	0.36	0	70.2	59.3	49.7
4-5 AM	738	0.0	3000	738	0	0.35	0	69.8	59.2	49.7
5-6 AM	2034	0.0	OFF	2034	0	0.00	0	68.2	68.2	68.2
6-7 AM	4362	0.0	OFF	4362	0	0.00	0	61.0	61.0	61.0
7-8 AM	5340	0.0	OFF	5340	0	0.00	0	54.4	54.4	54.4
8-9 AM	4094	0.0	OFF	4094	0	0.00	0	62.9	62.9	62.9
9-10 AM	3440	0.0	OFF	3440	0	0.00	0	66.4	66.4	66.4
10-11 AM	3454	0.0	OFF	3454	0	0.00	0	66.4	66.4	66.4
11AM-NOON	3594	0.0	OFF	3594	0	0.00	0	66.3	66.3	66.3
NOON-1PM	3700	0.0	OFF	3700	0	0.00	0	65.6	65.6	65.6
1-2 PM	3470	0.0	OFF	3470	0	0.00	0	66.4	66.4	66.4
2-3 PM	4112	0.0	OFF	4112	0	0.00	0	62.8	62.8	62.8
3-4 PM	4318	0.0	OFF	4318	0	0.00	0	61.4	61.4	61.4
4-5 PM	4506	0.0	OFF	4506	0	0.00	0	60.1	60.1	60.1
5-6 PM	4173	0.0	OFF	4173	0	0.00	0	62.3	62.3	62.3
6-7 PM	3246	0.0	OFF	3246	0	0.00	0	66.7	66.7	66.7
7-8 PM	2197	0.0	3000	2197	0	0.33	0	68.0	58.4	49.7
8-9 PM	1555	0.0	3000	1555	0	0.34	0	68.8	58.7	49.7
9-10 PM	1499	0.0	3000	1499	0	0.34	0	68.9	58.8	49.7
10-11 PM	1233	0.0	3000	1233	0	0.35	0	69.2	58.9	49.7
11PM-MID	1077	0.0	3000	1077	0	0.35	0	69.4	59.0	49.7

"OFF" INDICATES NO ROAD WORK (ALL LANES OPEN TO TRAFFIC)

----- SITE BREAKDOWN DELAYS -----	
BREAKDOWN DURATION (MINS)	0
RANGE OF QUEUE DELAY - MIN (VEH-H) MAX	0.0
AV BREAKDOWNS PER DAY	0.00
AV QUEUE DELAY/DAY (VEH-H)	0.0
AV TOTAL DELAY/DAY (VEH-H)	0.0

----- SITE ACCIDENT DELAYS -----	
BREAKDOWN DURATION (MINS)	0
RANGE OF QUEUE DELAY - MIN (VEH-H) MAX	0
AV BREAKDOWNS PER DAY	0
AV QUEUE DELAY/DAY (VEH-H)	0
AV TOTAL DELAY/DAY (VEH-H)	0

AVERAGE ACCIDENT NUMBERS (PIA/DAY)	
MAIN ROUTE WITHOUT WORKS	0.0232
MAIN ROUTE WITH WORKS	0.0226
'DIVERSION'	0.0000
PIA: Personal Injury Accidents	
IMPACTS ON ROAD USERS	
ROAD USER COSTS PER DAY	\$684
CONGESTED HOURS PER DAY*	0

*Delays Exceeding User-Specified Maximum

**USH 45: STH 145 TO CTH E (MILWAUKEE COUNTY)
NIGHTTIME CLOSURE
NO DIVERSION ROUTE (MAX QUEUE METHOD)**

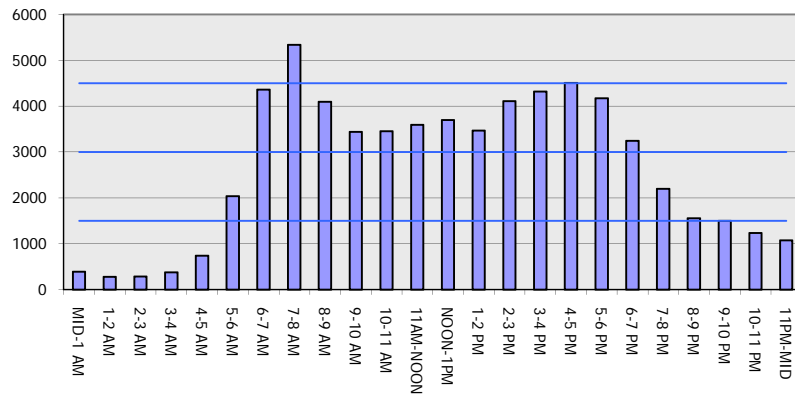
OCTOBER

Analyzed for 2009
Construction Season

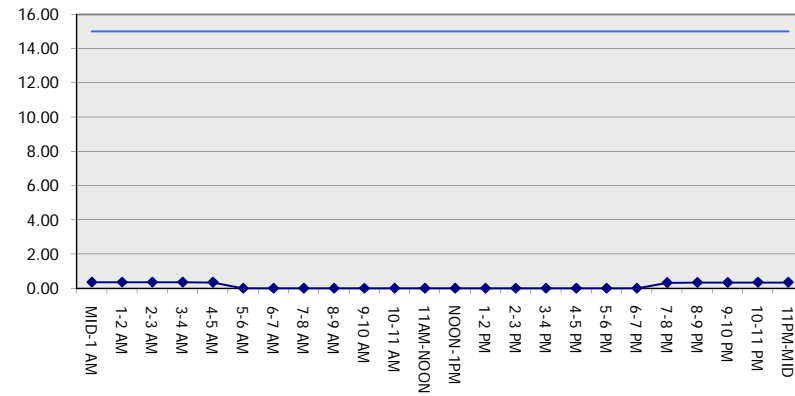
GRAPHICAL REPRESENTATION OF TRAFFIC MODEL INPUT AND OUTPUT

FRIDAY SOUTHBOUND DIRECTION

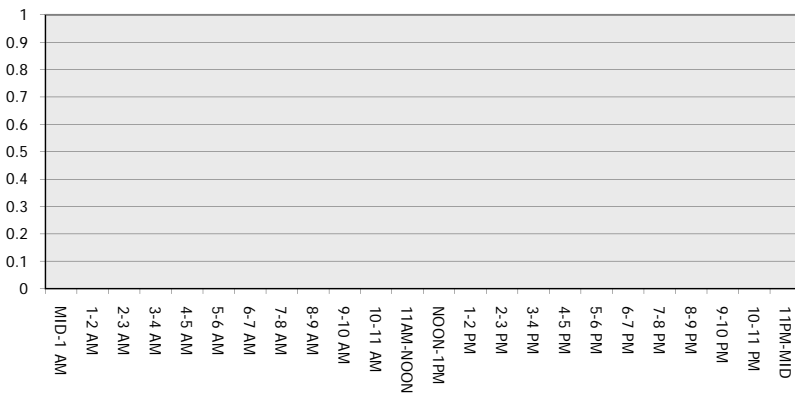
Main Route - Traffic Demand (Vehicles Per Hour)



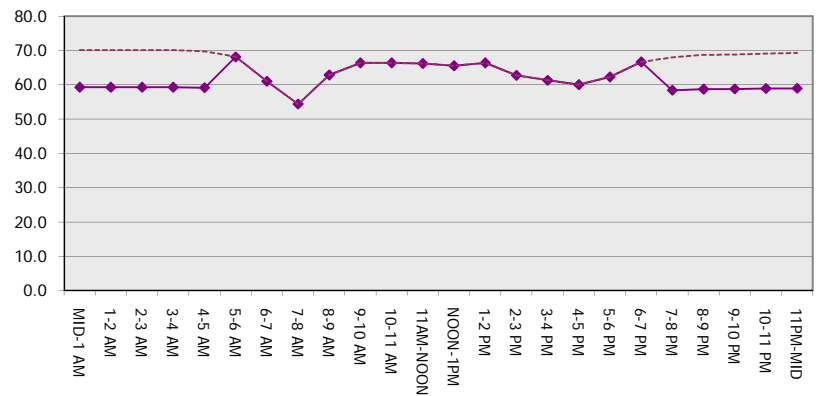
Main Route Average Delay Per Vehicle (Minutes)



Main Route - Average Queue Length (Vehicles)



Main Route - Average Speed (MPH)



USH 45: STH 145 TO CTH E (MILWAUKEE COUNTY) NIGHTTIME CLOSURE NO DIVERSION ROUTE (MAX QUEUE METHOD)	OCTOBER
	Analyzed for 2009 Construction Season

SUMMARY OF TRAFFIC MODEL OUTPUT

FRIDAY NORTHBOUND DIRECTION

TIME OF DAY	FLOWS AND CAPACITY IN VEH/HR						AVERAGE SPEEDS IN MPH			
	MAIN ROUTE		SITE CAPA CITY	FLOW		AV.DEL PER VEH (MINS)	AVERAGE QUEUE (VEH)	MAIN ROUTE		SITE
	DEMAND FLOW	PCT HEAVY		MAIN ROUTE	'DIVER TED'			WITHOUT WORK ZONE	WITH WORK ZONE	
MID-1 AM	551	0.0	3000	551	0	0.36	0	70.0	59.3	49.7
1-2 AM	355	0.0	3000	355	0	0.36	0	70.2	59.3	49.7
2-3 AM	348	0.0	3000	348	0	0.36	0	70.2	59.3	49.7
3-4 AM	399	0.0	3000	399	0	0.36	0	70.2	59.3	49.7
4-5 AM	722	0.0	3000	722	0	0.35	0	69.9	59.2	49.7
5-6 AM	1953	0.0	OFF	1953	0	0.00	0	68.3	68.3	68.3
6-7 AM	3566	0.0	OFF	3566	0	0.00	0	66.3	66.3	66.3
7-8 AM	4793	0.0	OFF	4793	0	0.00	0	58.1	58.1	58.1
8-9 AM	3894	0.0	OFF	3894	0	0.00	0	64.3	64.3	64.3
9-10 AM	3189	0.0	OFF	3189	0	0.00	0	66.8	66.8	66.8
10-11 AM	3234	0.0	OFF	3234	0	0.00	0	66.7	66.7	66.7
11AM-NOON	3572	0.0	OFF	3572	0	0.00	0	66.3	66.3	66.3
NOON-1PM	3977	0.0	OFF	3977	0	0.00	0	63.7	63.7	63.7
1-2 PM	4195	0.0	OFF	4195	0	0.00	0	62.2	62.2	62.2
2-3 PM	4880	0.0	OFF	4880	0	0.00	0	57.5	57.5	57.5
3-4 PM	5704	0.0	OFF	5704	0	0.00	0	51.9	51.9	51.9
4-5 PM	6294	0.0	OFF	6294	0	0.00	0	47.9	47.9	47.9
5-6 PM	5737	0.0	OFF	5737	0	0.00	0	51.7	51.7	51.7
6-7 PM	4006	0.0	OFF	4006	0	0.00	0	63.5	63.5	63.5
7-8 PM	2702	0.0	3000	2702	0	0.53	0	67.4	53.4	42.4
8-9 PM	2215	0.0	3000	2215	0	0.33	0	68.0	58.4	49.7
9-10 PM	2209	0.0	3000	2209	0	0.33	0	68.0	58.4	49.7
10-11 PM	1720	0.0	3000	1720	0	0.34	0	68.6	58.7	49.7
11PM-MID	1205	0.0	3000	1205	0	0.35	0	69.2	58.9	49.7

"OFF" INDICATES NO ROAD WORK (ALL LANES OPEN TO TRAFFIC)

----- SITE BREAKDOWN DELAYS -----	
BREAKDOWN DURATION (MINS)	0
RANGE OF QUEUE DELAY - MIN (VEH-H) MAX	0.0
AV BREAKDOWNS PER DAY	0.00
AV QUEUE DELAY/DAY (VEH-H)	0.0
AV TOTAL DELAY/DAY (VEH-H)	0.0

----- SITE ACCIDENT DELAYS -----	
BREAKDOWN DURATION (MINS)	0
RANGE OF QUEUE DELAY - MIN (VEH-H) MAX	0
AV BREAKDOWNS PER DAY	0
AV QUEUE DELAY/DAY (VEH-H)	0
AV TOTAL DELAY/DAY (VEH-H)	0

AVERAGE ACCIDENT NUMBERS (PIA/DAY)	
MAIN ROUTE WITHOUT WORKS	0.0261
MAIN ROUTE WITH WORKS	0.0253
'DIVERSION'	0.0000

PIA: Personal Injury Accidents

ECONOMIC IMPACT ON ROAD USERS	
ROAD USER COSTS PER DAY	\$981
CONGESTED HOURS PER DAY*	0

*Delays Exceeding User-Specified Maximum

**USH 45: STH 145 TO CTH E (MILWAUKEE COUNTY)
NIGHTTIME CLOSURE
NO DIVERSION ROUTE (MAX QUEUE METHOD)**

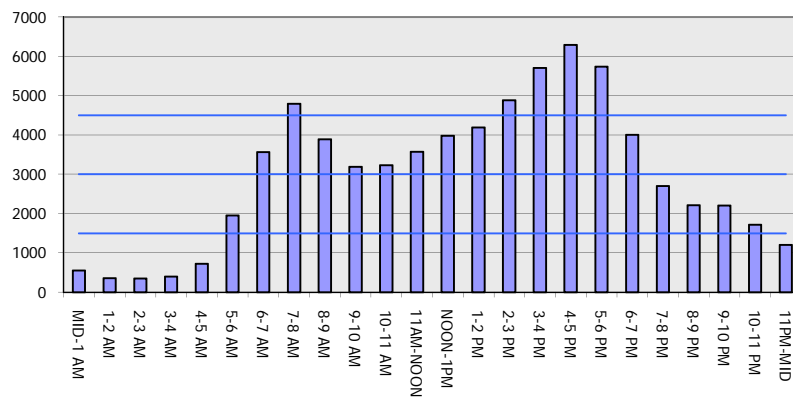
OCTOBER

Analyzed for 2009
Construction Season

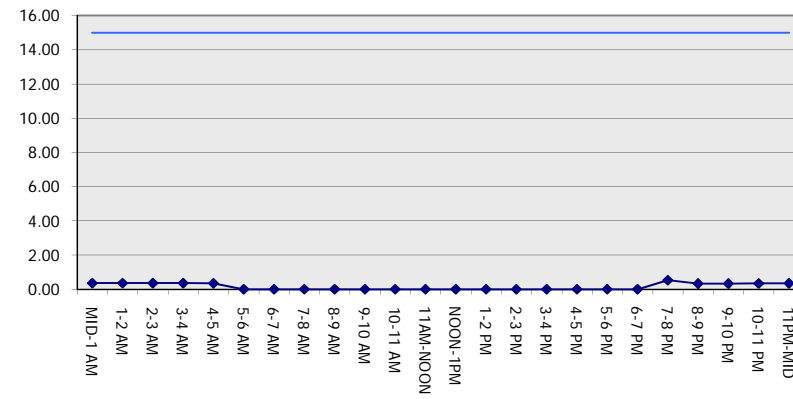
GRAPHICAL REPRESENTATION OF TRAFFIC MODEL INPUT AND OUTPUT

FRIDAY NORTHBOUND DIRECTION

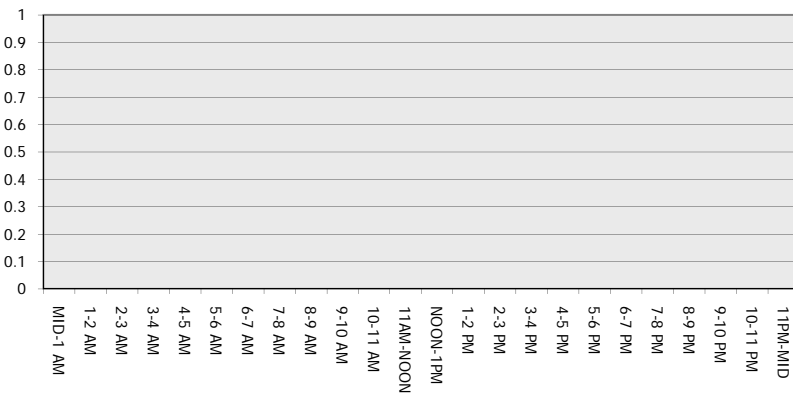
Main Route - Traffic Demand (Vehicles Per Hour)



Main Route Average Delay Per Vehicle (Minutes)



Main Route - Average Queue Length (Vehicles)



Main Route - Average Speed (MPH)

