

USH 45: STH 145 TO CTH E (MILWAUKEE COUNTY) NIGHTTIME 2 LANE CLOSURE NO DIVERSION ROUTE (MAX QUEUE METHOD)	AUGUST
	Analyzed for 2009 Construction Season

SUMMARY OF TRAFFIC MODEL OUTPUT

SUNDAY SOUTHBOUND DIRECTION

TIME OF DAY	FLOWS AND CAPACITY IN VEH/HR						AVERAGE SPEEDS IN MPH				
	MAIN ROUTE		SITE CAPA CITY	FLOW		AV.DEL PER VEH (MINS)	AVERAGE QUEUE (VEH)	MAIN ROUTE		SITE	
	DEMAND FLOW	PCT HEAVY		MAIN ROUTE	'DIVER TED'			WITHOUT WORK ZONE	WITH WORK ZONE		
MID-1 AM	686	0.0	1500	686	0	0.55	0	69.9	54.6	42.8	
1-2 AM	450	0.0	1500	450	0	0.53	0	70.2	55.3	43.7	
2-3 AM	281	0.0	1500	281	0	0.51	0	70.2	55.8	44.3	
3-4 AM	202	0.0	1500	202	0	0.50	0	70.2	56.0	44.6	
4-5 AM	226	0.0	1500	226	0	0.50	0	70.2	56.0	44.6	
5-6 AM	346	0.0	1500	346	0	0.51	0	70.2	55.6	44.1	
6-7 AM	694	0.0	1500	694	0	0.55	0	69.9	54.6	42.8	
7-8 AM	857	0.0	1500	857	0	0.57	0	69.7	54.0	42.2	
8-9 AM	1330	0.0	1499	1330	0	0.86	0	69.1	48.3	35.1	
9-10 AM	2089	0.0	OFF	2089	0	0.00	0	68.1	68.1	68.1	
10-11 AM	3002	0.0	OFF	3002	0	0.00	0	67.0	67.0	67.0	
11AM-NOON	3686	0.0	OFF	3686	0	0.00	0	65.7	65.7	65.7	
NOON-1PM	3609	0.0	OFF	3609	0	0.00	0	66.2	66.2	66.2	
1-2 PM	3215	0.0	OFF	3215	0	0.00	0	66.8	66.8	66.8	
2-3 PM	3481	0.0	OFF	3481	0	0.00	0	66.4	66.4	66.4	
3-4 PM	3330	0.0	OFF	3330	0	0.00	0	66.6	66.6	66.6	
4-5 PM	3213	0.0	OFF	3213	0	0.00	0	66.8	66.8	66.8	
5-6 PM	3011	0.0	OFF	3011	0	0.00	0	67.0	67.0	67.0	
6-7 PM	2843	0.0	OFF	2843	0	0.00	0	67.2	67.2	67.2	
7-8 PM	2408	0.0	1499	1945	463	13.06+	325	67.8	9.4	31.2	
8-9 PM	2027	0.0	1499	1498	528	16.62+	406	68.2	7.9	30.8	
9-10 PM	1466	0.0	1499	1364	102	15.27+	372	68.9	8.4	30.8	
10-11 PM	975	0.0	1499	975	0	2.58	110	69.6	30.2	38.2	
11PM-MID	566	0.0	1500	566	0	0.54	0	70.0	55.0	43.3	

"OFF" INDICATES NO ROAD WORK (ALL LANES OPEN TO TRAFFIC)

+ INDICATES QUEUEING EXCEEDS USER-SPECIFIED MAXIMUM LIMIT

----- SITE BREAKDOWN DELAYS -----	
BREAKDOWN DURATION (MINS)	0
RANGE OF QUEUE DELAY - MIN	0.0
(VEH-H) MAX	0.0
AV BREAKDOWNS PER DAY	0.00
AV QUEUE DELAY/DAY (VEH-H)	0.0
AV TOTAL DELAY/DAY (VEH-H)	0.0

----- SITE ACCIDENT DELAYS -----	
BREAKDOWN DURATION (MINS)	0
RANGE OF QUEUE DELAY - MIN	0
(VEH-H) MAX	0
AV BREAKDOWNS PER DAY	0
AV QUEUE DELAY/DAY (VEH-H)	0
AV TOTAL DELAY/DAY (VEH-H)	0

AVERAGE ACCIDENT NUMBERS (PIA/DAY)	
MAIN ROUTE WITHOUT WORKS	0.0161
MAIN ROUTE WITH WORKS	0.0149
'DIVERSION'	0.0009
<small>PIA: Personal Injury Accidents</small>	
IMPACTS ON ROAD USERS	
ROAD USER COSTS PER DAY	\$24,932
CONGESTED HOURS PER DAY*	3

*Delays Exceeding User-Specified Maximum

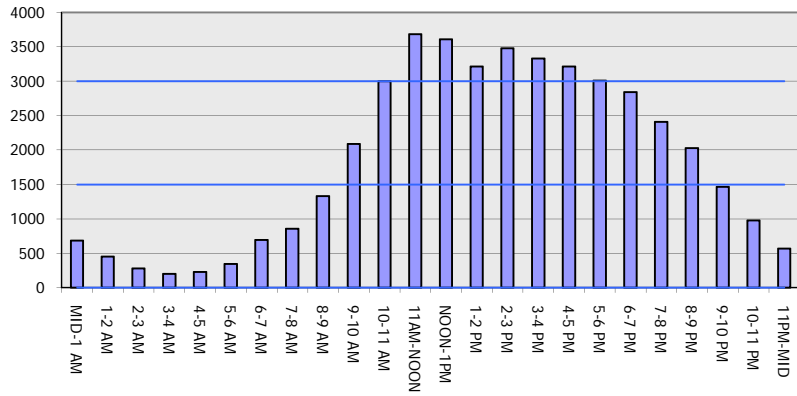
**USH 45: STH 145 TO CTH E (MILWAUKEE COUNTY)
NIGHTTIME 2 LANE CLOSURE
NO DIVERSION ROUTE (MAX QUEUE METHOD)**

AUGUST
Analyzed for 2009
Construction Season

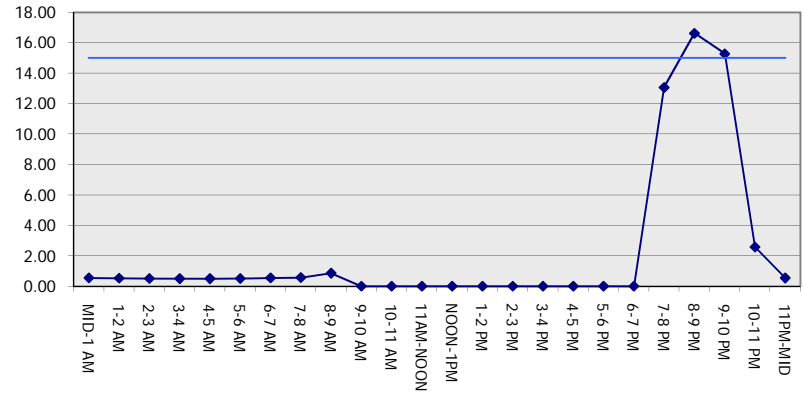
GRAPHICAL REPRESENTATION OF TRAFFIC MODEL INPUT AND OUTPUT

SUNDAY SOUTHBOUND DIRECTION

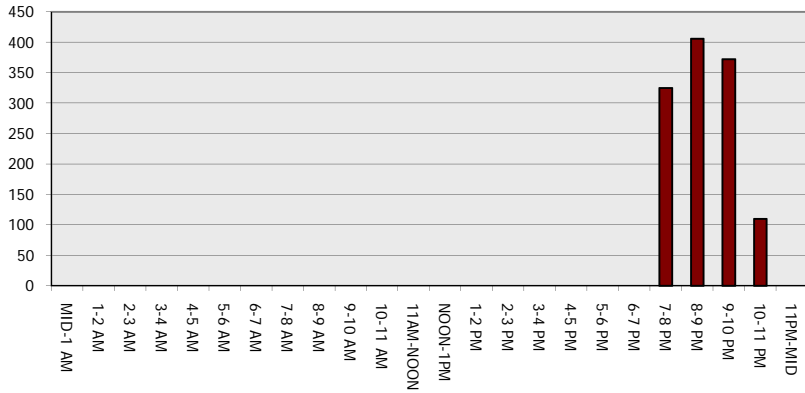
Main Route - Traffic Demand (Vehicles Per Hour)



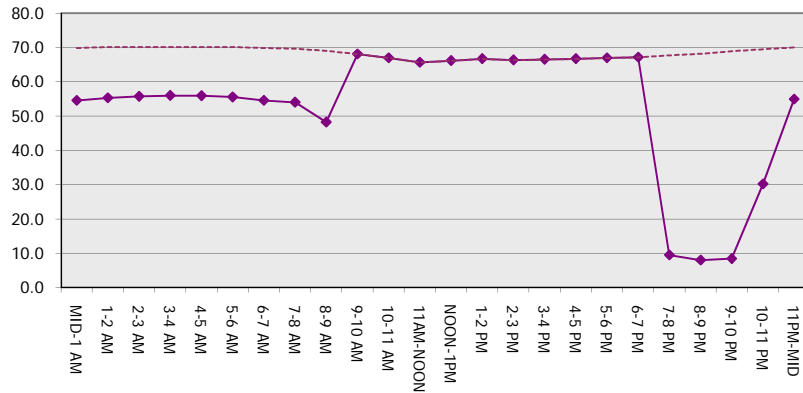
Main Route Average Delay Per Vehicle (Minutes)



Main Route - Average Queue Length (Vehicles)



Main Route - Average Speed (MPH)



USH 45: STH 145 TO CTH E (MILWAUKEE COUNTY) NIGHTTIME 2 LANE CLOSURE NO DIVERSION ROUTE (MAX QUEUE METHOD)	AUGUST
	Analyzed for 2009 Construction Season

SUMMARY OF TRAFFIC MODEL OUTPUT

SUNDAY NORTHBOUND DIRECTION

TIME OF DAY	FLOWS AND CAPACITY IN VEH/HR							AVERAGE SPEEDS IN MPH		
	MAIN ROUTE		SITE CAPA CITY	FLOW		AV.DEL PER VEH (MINS)	AVERAGE QUEUE (VEH)	MAIN ROUTE		SITE
	DEMAND FLOW	PCT HEAVY		MAIN ROUTE	'DIVER TED'			WITHOUT WORK ZONE	WITH WORK ZONE	
MID-1 AM	856	0.0	1500	856	0	0.57	0	69.7	54.1	42.2
1-2 AM	521	0.0	1500	521	0	0.54	0	70.1	55.1	43.4
2-3 AM	399	0.0	1500	399	0	0.52	0	70.2	55.5	43.9
3-4 AM	222	0.0	1500	222	0	0.50	0	70.2	56.0	44.6
4-5 AM	182	0.0	1500	182	0	0.49	0	70.2	56.1	44.8
5-6 AM	319	0.0	1500	319	0	0.51	0	70.2	55.7	44.2
6-7 AM	535	0.0	1500	535	0	0.54	0	70.0	55.0	43.3
7-8 AM	817	0.0	1500	817	0	0.57	0	69.7	54.2	42.4
8-9 AM	1149	0.0	1499	1149	0	0.68	0	69.3	51.7	39.2
9-10 AM	1613	0.0	OFF	1613	0	0.00	0	68.7	68.7	68.7
10-11 AM	2107	0.0	OFF	2107	0	0.00	0	68.1	68.1	68.1
11AM-NOON	2393	0.0	OFF	2393	0	0.00	0	67.8	67.8	67.8
NOON-1PM	2699	0.0	OFF	2699	0	0.00	0	67.4	67.4	67.4
1-2 PM	2870	0.0	OFF	2870	0	0.00	0	67.2	67.2	67.2
2-3 PM	2918	0.0	OFF	2918	0	0.00	0	67.1	67.1	67.1
3-4 PM	3117	0.0	OFF	3117	0	0.00	0	66.9	66.9	66.9
4-5 PM	3294	0.0	OFF	3294	0	0.00	0	66.6	66.6	66.6
5-6 PM	3230	0.0	OFF	3230	0	0.00	0	66.7	66.7	66.7
6-7 PM	2598	0.0	OFF	2598	0	0.00	0	67.5	67.5	67.5
7-8 PM	2137	0.0	1499	1870	268	11.24+	295	68.1	10.8	30.8
8-9 PM	1794	0.0	1500	1519	275	16.54+	404	68.5	8.0	30.8
9-10 PM	1545	0.0	1500	1502	43	16.35+	399	68.8	8.1	30.8
10-11 PM	1322	0.0	1499	1322	0	13.35	326	69.1	9.2	30.8
11PM-MID	746	0.0	1500	746	0	1.10	32	69.8	44.8	42.4

"OFF" INDICATES NO ROAD WORK (ALL LANES OPEN TO TRAFFIC)

+ INDICATES QUEUEING EXCEEDS USER-SPECIFIED MAXIMUM LIMIT

----- SITE BREAKDOWN DELAYS -----	
BREAKDOWN DURATION (MINS)	0
RANGE OF QUEUE DELAY - MIN (VEH-H) MAX	0.0
AV BREAKDOWNS PER DAY	0.00
AV QUEUE DELAY/DAY (VEH-H)	0.0
AV TOTAL DELAY/DAY (VEH-H)	0.0

----- SITE ACCIDENT DELAYS -----	
BREAKDOWN DURATION (MINS)	0
RANGE OF QUEUE DELAY - MIN (VEH-H) MAX	0
AV BREAKDOWNS PER DAY	0
AV QUEUE DELAY/DAY (VEH-H)	0
AV TOTAL DELAY/DAY (VEH-H)	0

AVERAGE ACCIDENT NUMBERS (PIA/DAY)	
MAIN ROUTE WITHOUT WORKS	0.0144
MAIN ROUTE WITH WORKS	0.0134
'DIVERSION'	0.0005

PIA: Personal Injury Accidents

ECONOMIC IMPACT ON ROAD USERS	
ROAD USER COSTS PER DAY	\$26,742
CONGESTED HOURS PER DAY*	3

*Delays Exceeding User-Specified Maximum

**USH 45: STH 145 TO CTH E (MILWAUKEE COUNTY)
NIGHTTIME 2 LANE CLOSURE
NO DIVERSION ROUTE (MAX QUEUE METHOD)**

AUGUST
Analyzed for 2009
Construction Season

GRAPHICAL REPRESENTATION OF TRAFFIC MODEL INPUT AND OUTPUT
SUNDAY NORTHBOUND DIRECTION

