

**USH 45: STH 145 TO CTH E (MILWAUKEE COUNTY)  
NIGHTTIME CLOSURE  
NO DIVERSION ROUTE (MAX QUEUE METHOD)**

**AUGUST**  
Analyzed for 2009  
Construction Season

**SUMMARY OF TRAFFIC MODEL OUTPUT**  
SUNDAY SOUTHBOUND DIRECTION

TIME OF DAY	FLOWS AND CAPACITY IN VEH/HR						AVERAGE SPEEDS IN MPH			
	MAIN ROUTE		SITE CAPA CITY	FLOW		AV.DEL PER VEH (MINS)	AVERAGE QUEUE (VEH)	MAIN ROUTE		SITE
	DEMAND FLOW	PCT HEAVY		MAIN ROUTE	'DIVER TED'			WITHOUT WORK ZONE	WITH WORK ZONE	
MID-1 AM	686	0.0	3000	686	0	0.36	0	69.9	59.2	49.7
1-2 AM	450	0.0	3000	450	0	0.36	0	70.2	59.3	49.7
2-3 AM	281	0.0	3000	281	0	0.36	0	70.2	59.3	49.7
3-4 AM	202	0.0	3000	202	0	0.36	0	70.2	59.3	49.7
4-5 AM	226	0.0	3000	226	0	0.36	0	70.2	59.3	49.7
5-6 AM	346	0.0	3000	346	0	0.36	0	70.2	59.3	49.7
6-7 AM	694	0.0	3000	694	0	0.36	0	69.9	59.2	49.7
7-8 AM	857	0.0	3000	857	0	0.35	0	69.7	59.1	49.7
8-9 AM	1330	0.0	3000	1330	0	0.35	0	69.1	58.9	49.7
9-10 AM	2089	0.0	OFF	2089	0	0.00	0	68.1	68.1	68.1
10-11 AM	3002	0.0	OFF	3002	0	0.00	0	67.0	67.0	67.0
11AM-NOON	3686	0.0	OFF	3686	0	0.00	0	65.7	65.7	65.7
NOON-1PM	3609	0.0	OFF	3609	0	0.00	0	66.2	66.2	66.2
1-2 PM	3215	0.0	OFF	3215	0	0.00	0	66.8	66.8	66.8
2-3 PM	3481	0.0	OFF	3481	0	0.00	0	66.4	66.4	66.4
3-4 PM	3330	0.0	OFF	3330	0	0.00	0	66.6	66.6	66.6
4-5 PM	3213	0.0	OFF	3213	0	0.00	0	66.8	66.8	66.8
5-6 PM	3011	0.0	OFF	3011	0	0.00	0	67.0	67.0	67.0
6-7 PM	2843	0.0	OFF	2843	0	0.00	0	67.2	67.2	67.2
7-8 PM	2408	0.0	3000	2408	0	0.34	0	67.8	58.0	49.1
8-9 PM	2027	0.0	3000	2027	0	0.33	0	68.2	58.6	49.7
9-10 PM	1466	0.0	3000	1466	0	0.34	0	68.9	58.8	49.7
10-11 PM	975	0.0	3000	975	0	0.35	0	69.6	59.1	49.7
11PM-MID	566	0.0	3000	566	0	0.36	0	70.0	59.2	49.7

"OFF" INDICATES NO ROAD WORK (ALL LANES OPEN TO TRAFFIC)

*----- SITE BREAKDOWN DELAYS -----*	
BREAKDOWN DURATION (MINS)	0
RANGE OF QUEUE DELAY - MIN (VEH-H) MAX	0.0
AV BREAKDOWNS PER DAY	0.00
AV QUEUE DELAY/DAY (VEH-H)	0.0
AV TOTAL DELAY/DAY (VEH-H)	0.0

*----- SITE ACCIDENT DELAYS -----*	
BREAKDOWN DURATION (MINS)	0
RANGE OF QUEUE DELAY - MIN (VEH-H) MAX	0
AV BREAKDOWNS PER DAY	0
AV QUEUE DELAY/DAY (VEH-H)	0
AV TOTAL DELAY/DAY (VEH-H)	0

AVERAGE ACCIDENT NUMBERS (PIA/DAY)	
MAIN ROUTE WITHOUT WORKS	0.0161
MAIN ROUTE WITH WORKS	0.0153
'DIVERSION'	0.0000
PIA: Personal Injury Accidents	
IMPACTS ON ROAD USERS	
ROAD USER COSTS PER DAY	\$986
CONGESTED HOURS PER DAY*	0

\*Delays Exceeding User-Specified Maximum

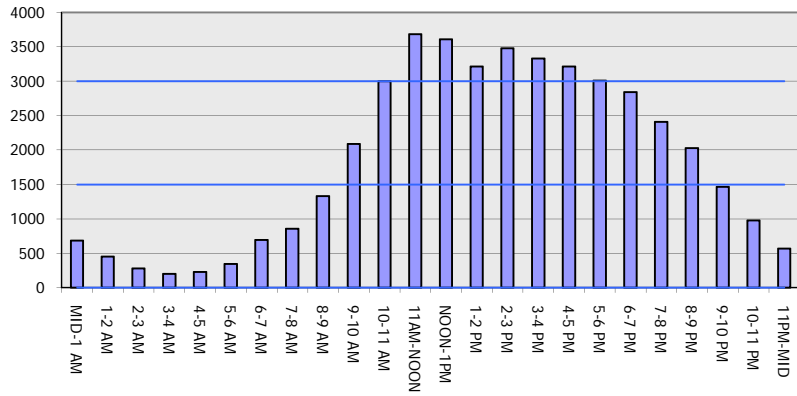
**USH 45: STH 145 TO CTH E (MILWAUKEE COUNTY)  
NIGHTTIME CLOSURE  
NO DIVERSION ROUTE (MAX QUEUE METHOD)**

**AUGUST**  
Analyzed for 2009  
Construction Season

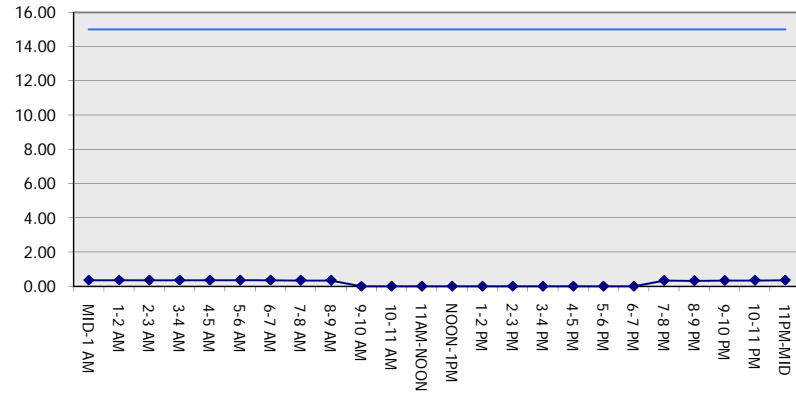
**GRAPHICAL REPRESENTATION OF TRAFFIC MODEL INPUT AND OUTPUT**

**SUNDAY SOUTHBOUND DIRECTION**

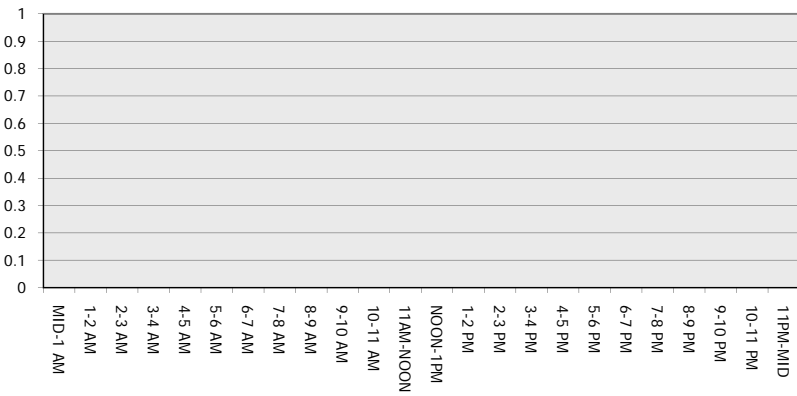
**Main Route - Traffic Demand (Vehicles Per Hour)**



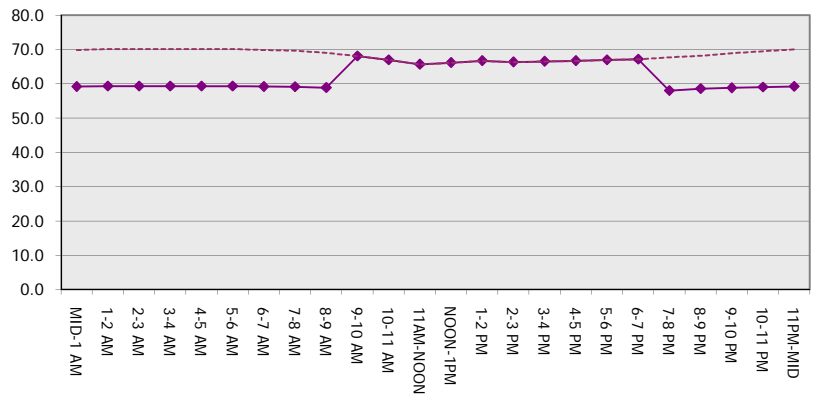
**Main Route Average Delay Per Vehicle (Minutes)**



**Main Route - Average Queue Length (Vehicles)**



**Main Route - Average Speed (MPH)**



<b>USH 45: STH 145 TO CTH E (MILWAUKEE COUNTY)</b> <b>NIGHTTIME CLOSURE</b> <b>NO DIVERSION ROUTE (MAX QUEUE METHOD)</b>	<b>AUGUST</b>
	Analyzed for 2009 Construction Season

**SUMMARY OF TRAFFIC MODEL OUTPUT**

SUNDAY NORTHBOUND DIRECTION

TIME OF DAY	FLOWS AND CAPACITY IN VEH/HR							AVERAGE SPEEDS IN MPH		
	MAIN ROUTE		SITE CAPA CITY	FLOW		AV.DEL PER VEH (MINS)	AVERAGE QUEUE (VEH)	MAIN ROUTE		SITE
	DEMAND FLOW	PCT HEAVY		MAIN ROUTE	'DIVER TED'			WITHOUT WORK ZONE	WITH WORK ZONE	
MID-1 AM	856	0.0	3000	856	0	0.35	0	69.7	59.1	49.7
1-2 AM	521	0.0	3000	521	0	0.36	0	70.1	59.3	49.7
2-3 AM	399	0.0	3000	399	0	0.36	0	70.2	59.3	49.7
3-4 AM	222	0.0	3000	222	0	0.36	0	70.2	59.3	49.7
4-5 AM	182	0.0	3000	182	0	0.36	0	70.2	59.3	49.7
5-6 AM	319	0.0	3000	319	0	0.36	0	70.2	59.3	49.7
6-7 AM	535	0.0	3000	535	0	0.36	0	70.0	59.3	49.7
7-8 AM	817	0.0	3000	817	0	0.35	0	69.7	59.1	49.7
8-9 AM	1149	0.0	3000	1149	0	0.35	0	69.3	59.0	49.7
9-10 AM	1613	0.0	OFF	1613	0	0.00	0	68.7	68.7	68.7
10-11 AM	2107	0.0	OFF	2107	0	0.00	0	68.1	68.1	68.1
11AM-NOON	2393	0.0	OFF	2393	0	0.00	0	67.8	67.8	67.8
NOON-1PM	2699	0.0	OFF	2699	0	0.00	0	67.4	67.4	67.4
1-2 PM	2870	0.0	OFF	2870	0	0.00	0	67.2	67.2	67.2
2-3 PM	2918	0.0	OFF	2918	0	0.00	0	67.1	67.1	67.1
3-4 PM	3117	0.0	OFF	3117	0	0.00	0	66.9	66.9	66.9
4-5 PM	3294	0.0	OFF	3294	0	0.00	0	66.6	66.6	66.6
5-6 PM	3230	0.0	OFF	3230	0	0.00	0	66.7	66.7	66.7
6-7 PM	2598	0.0	OFF	2598	0	0.00	0	67.5	67.5	67.5
7-8 PM	2137	0.0	3000	2137	0	0.33	0	68.1	58.5	49.7
8-9 PM	1794	0.0	3000	1794	0	0.34	0	68.5	58.6	49.7
9-10 PM	1545	0.0	3000	1545	0	0.34	0	68.8	58.8	49.7
10-11 PM	1322	0.0	3000	1322	0	0.35	0	69.1	58.9	49.7
11PM-MID	746	0.0	3000	746	0	0.35	0	69.8	59.2	49.7

"OFF" INDICATES NO ROAD WORK (ALL LANES OPEN TO TRAFFIC)

*----- SITE BREAKDOWN DELAYS -----*	
BREAKDOWN DURATION (MINS)	0
RANGE OF QUEUE DELAY - MIN (VEH-H) MAX	0.0
AV BREAKDOWNS PER DAY	0.00
AV QUEUE DELAY/DAY (VEH-H)	0.0
AV TOTAL DELAY/DAY (VEH-H)	0.0

*----- SITE ACCIDENT DELAYS -----*	
BREAKDOWN DURATION (MINS)	0
RANGE OF QUEUE DELAY - MIN (VEH-H) MAX	0
AV BREAKDOWNS PER DAY	0
AV QUEUE DELAY/DAY (VEH-H)	0
AV TOTAL DELAY/DAY (VEH-H)	0

AVERAGE ACCIDENT NUMBERS (PIA/DAY)	
MAIN ROUTE WITHOUT WORKS	0.0144
MAIN ROUTE WITH WORKS	0.0136
'DIVERSION'	0.0000

PIA: Personal Injury Accidents

ECONOMIC IMPACT ON ROAD USERS	
ROAD USER COSTS PER DAY	\$986
CONGESTED HOURS PER DAY*	0

\*Delays Exceeding User-Specified Maximum

**USH 45: STH 145 TO CTH E (MILWAUKEE COUNTY)  
NIGHTTIME CLOSURE  
NO DIVERSION ROUTE (MAX QUEUE METHOD)**

**AUGUST**  
Analyzed for 2009  
Construction Season

**GRAPHICAL REPRESENTATION OF TRAFFIC MODEL INPUT AND OUTPUT**  
**SUNDAY NORTHBOUND DIRECTION**

