

USH 45: STH 145 TO CTH E (MILWAUKEE COUNTY) NIGHTTIME 2 LANE CLOSURE NO DIVERSION ROUTE (MAX QUEUE METHOD)	AUGUST
	Analyzed for 2009 Construction Season

SUMMARY OF TRAFFIC MODEL OUTPUT

MON-THUR SOUTHBOUND DIRECTION

TIME OF DAY	FLOWS AND CAPACITY IN VEH/HR						AVERAGE SPEEDS IN MPH			
	MAIN ROUTE		SITE CAPA CITY	FLOW		AV.DEL PER VEH (MINS)	AVERAGE QUEUE (VEH)	MAIN ROUTE		SITE
	DEMAND FLOW	PCT HEAVY		MAIN ROUTE	'DIVER TED'			WITHOUT WORK ZONE	WITH WORK ZONE	
MID-1 AM	362	0.0	1500	362	0	0.52	0	70.2	55.6	44.0
1-2 AM	250	0.0	1500	250	0	0.50	0	70.2	55.9	44.5
2-3 AM	253	0.0	1500	253	0	0.50	0	70.2	55.9	44.5
3-4 AM	373	0.0	1500	373	0	0.52	0	70.2	55.5	44.0
4-5 AM	772	0.0	1500	772	0	0.56	0	69.8	54.3	42.5
5-6 AM	2222	0.0	OFF	2222	0	0.00	0	68.0	68.0	68.0
6-7 AM	4558	0.0	OFF	4558	0	0.00	0	59.7	59.7	59.7
7-8 AM	5694	0.0	OFF	5694	0	0.00	0	52.0	52.0	52.0
8-9 AM	4583	0.0	OFF	4583	0	0.00	0	59.6	59.6	59.6
9-10 AM	3595	0.0	OFF	3595	0	0.00	0	66.3	66.3	66.3
10-11 AM	3456	0.0	OFF	3456	0	0.00	0	66.4	66.4	66.4
11AM-NOON	3453	0.0	OFF	3453	0	0.00	0	66.4	66.4	66.4
NOON-1PM	3388	0.0	OFF	3388	0	0.00	0	66.5	66.5	66.5
1-2 PM	3305	0.0	OFF	3305	0	0.00	0	66.6	66.6	66.6
2-3 PM	3821	0.0	OFF	3821	0	0.00	0	64.8	64.8	64.8
3-4 PM	4210	0.0	OFF	4210	0	0.00	0	62.1	62.1	62.1
4-5 PM	4108	0.0	OFF	4108	0	0.00	0	62.8	62.8	62.8
5-6 PM	3932	0.0	OFF	3932	0	0.00	0	64.0	64.0	64.0
6-7 PM	2937	0.0	OFF	2937	0	0.00	0	67.1	67.1	67.1
7-8 PM	2059	0.0	1499	1863	196	11.00+	291	68.2	11.0	30.8
8-9 PM	1732	0.0	1500	1537	196	16.45+	402	68.6	8.0	30.8
9-10 PM	1421	0.0	1500	1421	0	15.60+	380	69.0	8.3	30.8
10-11 PM	1067	0.0	1499	1067	0	3.34	132	69.4	25.9	37.1
11PM-MID	919	0.0	1500	919	0	0.58	0	69.6	53.8	42.0

"OFF" INDICATES NO ROAD WORK (ALL LANES OPEN TO TRAFFIC)

+ INDICATES QUEUEING EXCEEDS USER-SPECIFIED MAXIMUM LIMIT

----- SITE BREAKDOWN DELAYS -----	
BREAKDOWN DURATION (MINS)	0
RANGE OF QUEUE DELAY - MIN (VEH-H) MAX	0.0
AV BREAKDOWNS PER DAY	0.00
AV QUEUE DELAY/DAY (VEH-H)	0.0
AV TOTAL DELAY/DAY (VEH-H)	0.0

----- SITE ACCIDENT DELAYS -----	
BREAKDOWN DURATION (MINS)	0
RANGE OF QUEUE DELAY - MIN (VEH-H) MAX	0
AV BREAKDOWNS PER DAY	0
AV QUEUE DELAY/DAY (VEH-H)	0
AV TOTAL DELAY/DAY (VEH-H)	0

AVERAGE ACCIDENT NUMBERS (PIA/DAY)	
MAIN ROUTE WITHOUT WORKS	0.0229
MAIN ROUTE WITH WORKS	0.0221
'DIVERSION'	0.0003
<small>PIA: Personal Injury Accidents</small>	
IMPACTS ON ROAD USERS	
ROAD USER COSTS PER DAY	\$18,393
CONGESTED HOURS PER DAY*	3

*Delays Exceeding User-Specified Maximum

**USH 45: STH 145 TO CTH E (MILWAUKEE COUNTY)
NIGHTTIME 2 LANE CLOSURE
NO DIVERSION ROUTE (MAX QUEUE METHOD)**

AUGUST

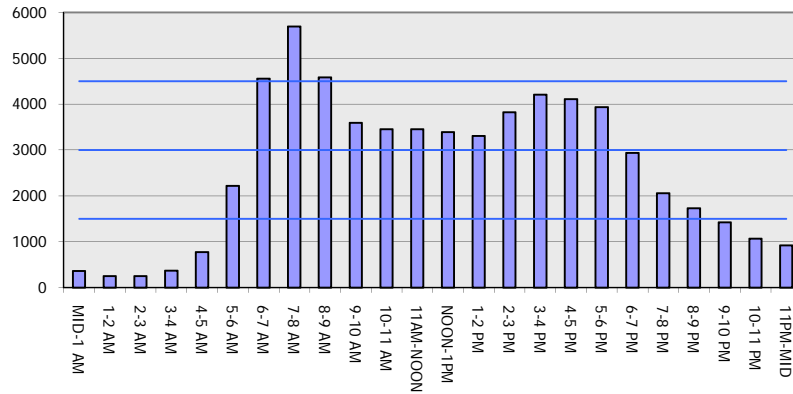
Analyzed for 2009
Construction Season

GRAPHICAL REPRESENTATION OF TRAFFIC MODEL INPUT AND OUTPUT

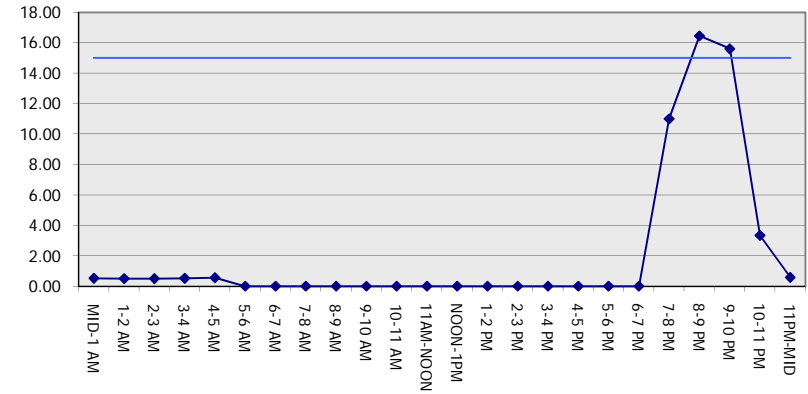
MON-THUR

SOUTHBOUND DIRECTION

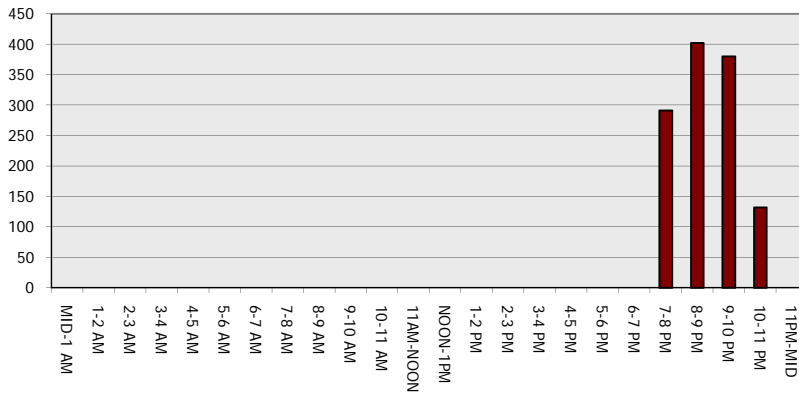
Main Route - Traffic Demand (Vehicles Per Hour)



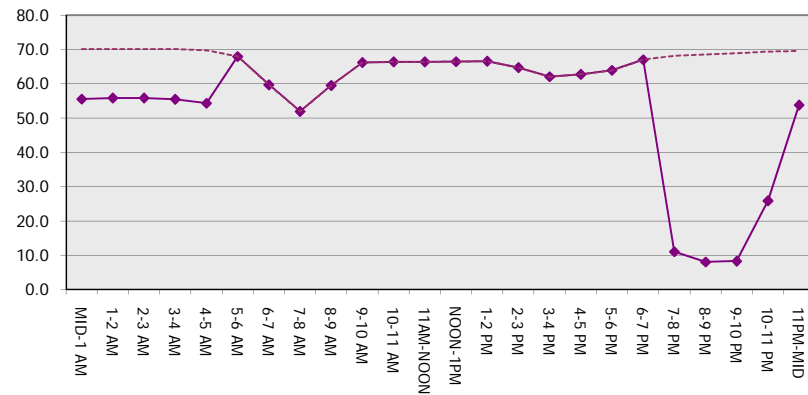
Main Route Average Delay Per Vehicle (Minutes)



Main Route - Average Queue Length (Vehicles)



Main Route - Average Speed (MPH)



USH 45: STH 145 TO CTH E (MILWAUKEE COUNTY) NIGHTTIME 2 LANE CLOSURE NO DIVERSION ROUTE (MAX QUEUE METHOD)	AUGUST
	Analyzed for 2009 Construction Season

SUMMARY OF TRAFFIC MODEL OUTPUT

MON-THUR NORTHBOUND DIRECTION

TIME OF DAY	FLOWS AND CAPACITY IN VEH/HR						AVERAGE SPEEDS IN MPH			
	MAIN ROUTE		SITE CAPA CITY	FLOW		AV.DEL PER VEH (MINS)	AVERAGE QUEUE (VEH)	MAIN ROUTE		SITE
	DEMAND FLOW	PCT HEAVY		MAIN ROUTE	'DIVER TED'			WITHOUT WORK ZONE	WITH WORK ZONE	
MID-1 AM	537	0.0	1500	537	0	0.54	0	70.0	55.0	43.3
1-2 AM	331	0.0	1500	331	0	0.51	0	70.2	55.6	44.2
2-3 AM	281	0.0	1500	281	0	0.51	0	70.2	55.8	44.3
3-4 AM	326	0.0	1500	326	0	0.51	0	70.2	55.6	44.2
4-5 AM	660	0.0	1500	660	0	0.55	0	69.9	54.6	42.9
5-6 AM	1986	0.0	OFF	1986	0	0.00	0	68.2	68.2	68.2
6-7 AM	3683	0.0	OFF	3683	0	0.00	0	65.7	65.7	65.7
7-8 AM	4760	0.0	OFF	4760	0	0.00	0	58.3	58.3	58.3
8-9 AM	3884	0.0	OFF	3884	0	0.00	0	64.3	64.3	64.3
9-10 AM	3076	0.0	OFF	3076	0	0.00	0	66.9	66.9	66.9
10-11 AM	3023	0.0	OFF	3023	0	0.00	0	67.0	67.0	67.0
11AM-NOON	3166	0.0	OFF	3166	0	0.00	0	66.8	66.8	66.8
NOON-1PM	3352	0.0	OFF	3352	0	0.00	0	66.6	66.6	66.6
1-2 PM	3657	0.0	OFF	3657	0	0.00	0	65.9	65.9	65.9
2-3 PM	4440	0.0	OFF	4440	0	0.00	0	60.5	60.5	60.5
3-4 PM	5068	0.0	OFF	5068	0	0.00	0	56.3	56.3	56.3
4-5 PM	5902	0.0	OFF	5902	0	0.00	0	50.5	50.5	50.5
5-6 PM	5713	0.0	OFF	5713	0	0.00	0	51.9	51.9	51.9
6-7 PM	3668	0.0	OFF	3668	0	0.00	0	65.8	65.8	65.8
7-8 PM	2497	0.0	1499	1816	681	13.65+	338	67.6	9.1	34.1
8-9 PM	2180	0.0	1499	1527	653	16.53+	404	68.0	8.0	30.8
9-10 PM	1970	0.0	1500	1526	444	16.51+	404	68.3	8.0	30.8
10-11 PM	1686	0.0	1499	1539	148	16.29+	398	68.6	8.1	30.8
11PM-MID	1075	0.0	1499	1075	0	7.13	231	69.4	15.3	35.6

"OFF" INDICATES NO ROAD WORK (ALL LANES OPEN TO TRAFFIC)

+ INDICATES QUEUEING EXCEEDS USER-SPECIFIED MAXIMUM LIMIT

----- SITE BREAKDOWN DELAYS -----	
BREAKDOWN DURATION (MINS)	0
RANGE OF QUEUE DELAY - MIN (VEH-H) MAX	0.0
AV BREAKDOWNS PER DAY	0.00
AV QUEUE DELAY/DAY (VEH-H)	0.0
AV TOTAL DELAY/DAY (VEH-H)	0.0

----- SITE ACCIDENT DELAYS -----	
BREAKDOWN DURATION (MINS)	0
RANGE OF QUEUE DELAY - MIN (VEH-H) MAX	0
AV BREAKDOWNS PER DAY	0
AV QUEUE DELAY/DAY (VEH-H)	0
AV TOTAL DELAY/DAY (VEH-H)	0

AVERAGE ACCIDENT NUMBERS (PIA/DAY)	
MAIN ROUTE WITHOUT WORKS	0.0245
MAIN ROUTE WITH WORKS	0.0231
'DIVERSION'	0.0016

PIA: Personal Injury Accidents

ECONOMIC IMPACT ON ROAD USERS	
ROAD USER COSTS PER DAY	\$32,558
CONGESTED HOURS PER DAY*	4

*Delays Exceeding User-Specified Maximum

**USH 45: STH 145 TO CTH E (MILWAUKEE COUNTY)
NIGHTTIME 2 LANE CLOSURE
NO DIVERSION ROUTE (MAX QUEUE METHOD)**

AUGUST
Analyzed for 2009
Construction Season

GRAPHICAL REPRESENTATION OF TRAFFIC MODEL INPUT AND OUTPUT
MON-THUR NORTHBOUND DIRECTION

