

IH 43: CTH Y TO HALE INTERCHANGE (WAUKESHA AND MILWAUKEE COUNTIES) NIGHTTIME CLOSURE NO DIVERSION ROUTE (MAX QUEUE METHOD)	OCTOBER
	Analyzed for 2009 Construction Season

SUMMARY OF TRAFFIC MODEL OUTPUT

MON-THUR SOUTHBOUND DIRECTION

TIME OF DAY	FLOWS AND CAPACITY IN VEH/HR						AVERAGE SPEEDS IN MPH			
	MAIN ROUTE		SITE CAPA CITY	FLOW		AV.DEL PER VEH (MINS)	AVERAGE QUEUE (VEH)	MAIN ROUTE		SITE
	DEMAND FLOW	PCT HEAVY		MAIN ROUTE	'DIVER TED'			WITHOUT WORK ZONE	WITH WORK ZONE	
MID-1 AM	135	0.0	1500	135	0	0.44	0	66.1	61.7	45.0
1-2 AM	117	0.0	1500	117	0	0.43	0	66.1	61.7	45.0
2-3 AM	133	0.0	1500	133	0	0.44	0	66.1	61.7	45.0
3-4 AM	331	0.0	1500	331	0	0.45	0	65.8	61.2	44.2
4-5 AM	812	0.0	OFF	812	0	0.00	0	64.9	64.9	64.9
5-6 AM	1646	0.0	OFF	1646	0	0.00	0	63.3	63.3	63.3
6-7 AM	2203	0.0	OFF	2203	0	0.00	0	62.3	62.3	62.3
7-8 AM	1704	0.0	OFF	1704	0	0.00	0	63.2	63.2	63.2
8-9 AM	1190	0.0	OFF	1190	0	0.00	0	64.1	64.1	64.1
9-10 AM	1158	0.0	OFF	1158	0	0.00	0	64.2	64.2	64.2
10-11 AM	1226	0.0	OFF	1226	0	0.00	0	64.1	64.1	64.1
11AM-NOON	1306	0.0	OFF	1306	0	0.00	0	64.0	64.0	64.0
NOON-1PM	1414	0.0	OFF	1414	0	0.00	0	63.8	63.8	63.8
1-2 PM	1871	0.0	OFF	1871	0	0.00	0	62.9	62.9	62.9
2-3 PM	2531	0.0	OFF	2531	0	0.00	0	60.5	60.5	60.5
3-4 PM	2675	0.0	OFF	2675	0	0.00	0	59.1	59.1	59.1
4-5 PM	2671	0.0	OFF	2671	0	0.00	0	59.1	59.1	59.1
5-6 PM	2020	0.0	OFF	2020	0	0.00	0	62.6	62.6	62.6
6-7 PM	1268	0.0	1500	1268	0	0.72	0	64.0	57.4	36.4
7-8 PM	1054	0.0	1500	1054	0	0.52	0	64.4	59.4	41.5
8-9 PM	881	0.0	1500	881	0	0.51	0	64.8	59.9	42.1
9-10 PM	581	0.0	1500	581	0	0.48	0	65.3	60.6	43.2
10-11 PM	413	0.0	1500	413	0	0.46	0	65.6	61.0	43.8
11PM-MID	242	0.0	1500	242	0	0.45	0	66.0	61.4	44.5

"OFF" INDICATES NO ROAD WORK (ALL LANES OPEN TO TRAFFIC)

----- SITE BREAKDOWN DELAYS -----	
BREAKDOWN DURATION (MINS)	0
RANGE OF QUEUE DELAY - MIN (VEH-H) MAX	0.0
AV BREAKDOWNS PER DAY	0.00
AV QUEUE DELAY/DAY (VEH-H)	0.0
AV TOTAL DELAY/DAY (VEH-H)	0.0

----- SITE ACCIDENT DELAYS -----	
BREAKDOWN DURATION (MINS)	0
RANGE OF QUEUE DELAY - MIN (VEH-H) MAX	0
AV BREAKDOWNS PER DAY	0
AV QUEUE DELAY/DAY (VEH-H)	0
AV TOTAL DELAY/DAY (VEH-H)	0

AVERAGE ACCIDENT NUMBERS (PIA/DAY)	
MAIN ROUTE WITHOUT WORKS	0.0315
MAIN ROUTE WITH WORKS	0.0312
'DIVERSION'	0.0000
<small>PIA: Personal Injury Accidents</small>	
IMPACTS ON ROAD USERS	
ROAD USER COSTS PER DAY	\$569
CONGESTED HOURS PER DAY*	0

*Delays Exceeding User-Specified Maximum

IH 43: CTH Y TO HALE INTERCHANGE (WAUKESHA AND MILWAUKEE COUNTIES)
NIGHTTIME CLOSURE
NO DIVERSION ROUTE (MAX QUEUE METHOD)

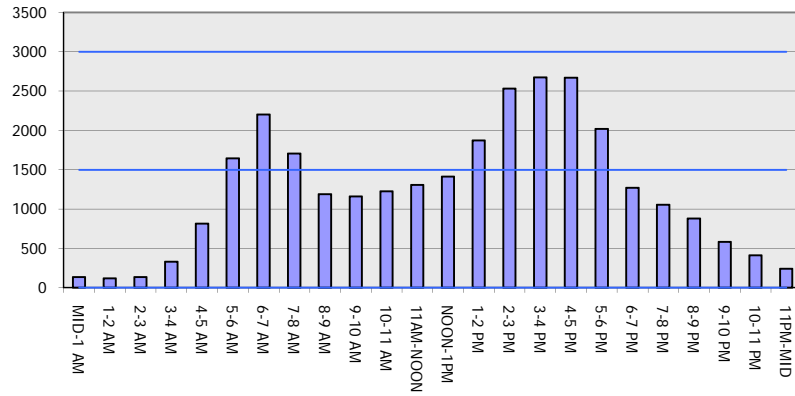
OCTOBER

Analyzed for 2009
 Construction Season

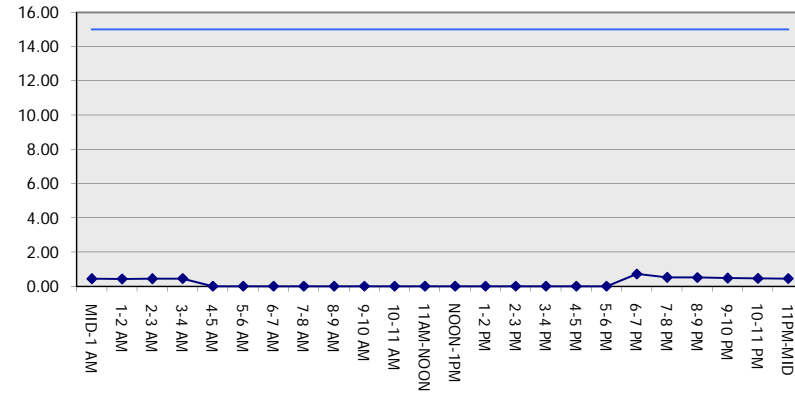
GRAPHICAL REPRESENTATION OF TRAFFIC MODEL INPUT AND OUTPUT

MON-THUR SOUTHBOUND DIRECTION

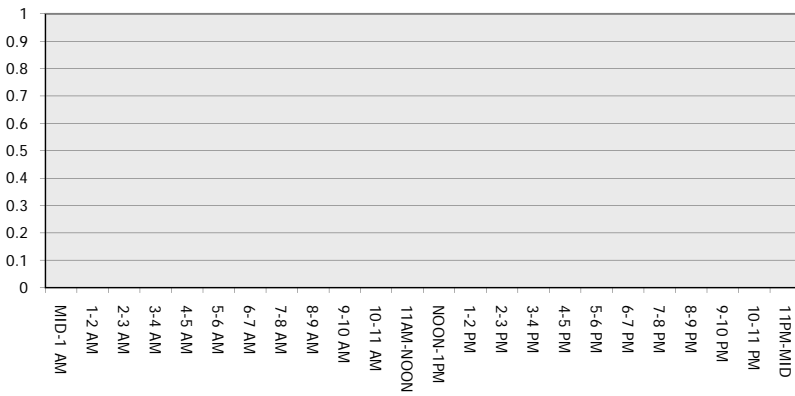
Main Route - Traffic Demand (Vehicles Per Hour)



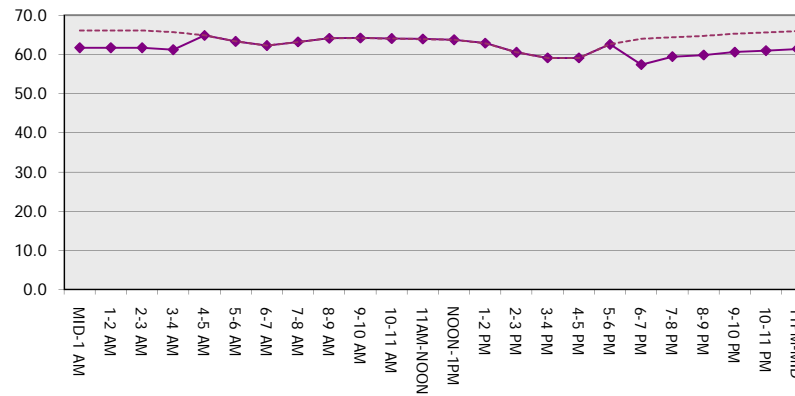
Main Route Average Delay Per Vehicle (Minutes)



Main Route - Average Queue Length (Vehicles)



Main Route - Average Speed (MPH)



IH 43: CTH Y TO HALE INTERCHANGE (WAUKESHA AND MILWAUKEE COUNTIES) NIGHTTIME CLOSURE NO DIVERSION ROUTE (MAX QUEUE METHOD)	OCTOBER
	Analyzed for 2009 Construction Season

SUMMARY OF TRAFFIC MODEL OUTPUT

MON-THUR NORTHBOUND DIRECTION

TIME OF DAY	FLOWS AND CAPACITY IN VEH/HR						AVERAGE SPEEDS IN MPH			
	MAIN ROUTE		SITE CAPA CITY	FLOW		AV.DEL PER VEH (MINS)	AVERAGE QUEUE (VEH)	MAIN ROUTE		SITE
	DEMAND FLOW	PCT HEAVY		MAIN ROUTE	'DIVER TED'			WITHOUT WORK ZONE	WITH WORK ZONE	
MID-1 AM	146	0.0	1500	146	0	0.44	0	66.1	61.7	44.9
1-2 AM	127	0.0	1500	127	0	0.43	0	66.1	61.7	45.0
2-3 AM	187	0.0	1500	187	0	0.44	0	66.0	61.6	44.7
3-4 AM	452	0.0	1500	452	0	0.47	0	65.5	60.9	43.7
4-5 AM	1542	0.0	OFF	1542	0	0.00	0	63.5	63.5	63.5
5-6 AM	2944	0.0	OFF	2944	0	0.00	0	56.3	56.3	56.3
6-7 AM	3002	0.0	OFF	3002	0	0.00	0	55.8	55.8	55.8
7-8 AM	2273	0.0	OFF	2273	0	0.00	0	62.2	62.2	62.2
8-9 AM	1702	0.0	OFF	1702	0	0.00	0	63.2	63.2	63.2
9-10 AM	1347	0.0	OFF	1347	0	0.00	0	63.9	63.9	63.9
10-11 AM	1396	0.0	OFF	1396	0	0.00	0	63.8	63.8	63.8
11AM-NOON	1377	0.0	OFF	1377	0	0.00	0	63.8	63.8	63.8
NOON-1PM	1430	0.0	OFF	1430	0	0.00	0	63.7	63.7	63.7
1-2 PM	1565	0.0	OFF	1565	0	0.00	0	63.5	63.5	63.5
2-3 PM	1926	0.0	OFF	1926	0	0.00	0	62.8	62.8	62.8
3-4 PM	2150	0.0	OFF	2150	0	0.00	0	62.3	62.3	62.3
4-5 PM	2261	0.0	OFF	2261	0	0.00	0	62.2	62.2	62.2
5-6 PM	1533	0.0	OFF	1533	0	0.00	0	63.5	63.5	63.5
6-7 PM	949	0.0	1500	949	0	0.51	0	64.6	59.7	41.9
7-8 PM	769	0.0	1500	769	0	0.50	0	65.0	60.1	42.5
8-9 PM	664	0.0	1500	664	0	0.49	0	65.1	60.4	42.9
9-10 PM	539	0.0	1500	539	0	0.47	0	65.4	60.7	43.3
10-11 PM	318	0.0	1500	318	0	0.45	0	65.8	61.2	44.2
11PM-MID	218	0.0	1500	218	0	0.44	0	66.0	61.5	44.6

"OFF" INDICATES NO ROAD WORK (ALL LANES OPEN TO TRAFFIC)

----- SITE BREAKDOWN DELAYS -----	
BREAKDOWN DURATION (MINS)	0
RANGE OF QUEUE DELAY - MIN (VEH-H) MAX	0.0
AV BREAKDOWNS PER DAY	0.00
AV QUEUE DELAY/DAY (VEH-H)	0.0
AV TOTAL DELAY/DAY (VEH-H)	0.0

----- SITE ACCIDENT DELAYS -----	
BREAKDOWN DURATION (MINS)	0
RANGE OF QUEUE DELAY - MIN (VEH-H) MAX	0
AV BREAKDOWNS PER DAY	0
AV QUEUE DELAY/DAY (VEH-H)	0
AV TOTAL DELAY/DAY (VEH-H)	0

AVERAGE ACCIDENT NUMBERS (PIA/DAY)	
MAIN ROUTE WITHOUT WORKS	0.0329
MAIN ROUTE WITH WORKS	0.0326
'DIVERSION'	0.0000

PIA: Personal Injury Accidents

ECONOMIC IMPACT ON ROAD USERS	
ROAD USER COSTS PER DAY	\$426
CONGESTED HOURS PER DAY*	0

*Delays Exceeding User-Specified Maximum

IH 43: CTH Y TO HALE INTERCHANGE (WAUKESHA AND MILWAUKEE COUNTIES)
NIGHTTIME CLOSURE
NO DIVERSION ROUTE (MAX QUEUE METHOD)

OCTOBER

Analyzed for 2009
 Construction Season

GRAPHICAL REPRESENTATION OF TRAFFIC MODEL INPUT AND OUTPUT
MON-THUR NORTHBOUND DIRECTION

