

IH 43: CTH Y TO HALE INTERCHANGE (WAUKESHA AND MILWAUKEE COUNTIES) NIGHTTIME CLOSURE NO DIVERSION ROUTE (MAX QUEUE METHOD)	OCTOBER
	Analyzed for 2009 Construction Season

SUMMARY OF TRAFFIC MODEL OUTPUT

FRIDAY SOUTHBOUND DIRECTION

TIME OF DAY	FLOWS AND CAPACITY IN VEH/HR						AVERAGE SPEEDS IN MPH			
	MAIN ROUTE		SITE CAPA CITY	FLOW		AV.DEL PER VEH (MINS)	AVERAGE QUEUE (VEH)	MAIN ROUTE		SITE
	DEMAND FLOW	PCT HEAVY		MAIN ROUTE	'DIVER TED'			WITHOUT WORK ZONE	WITH WORK ZONE	
MID-1 AM	178	0.0	1500	178	0	0.44	0	66.1	61.6	44.8
1-2 AM	154	0.0	1500	154	0	0.44	0	66.1	61.7	44.9
2-3 AM	167	0.0	1500	167	0	0.44	0	66.1	61.6	44.8
3-4 AM	310	0.0	1500	310	0	0.45	0	65.8	61.3	44.2
4-5 AM	792	0.0	OFF	792	0	0.00	0	64.9	64.9	64.9
5-6 AM	1595	0.0	OFF	1595	0	0.00	0	63.4	63.4	63.4
6-7 AM	2098	0.0	OFF	2098	0	0.00	0	62.5	62.5	62.5
7-8 AM	1604	0.0	OFF	1604	0	0.00	0	63.4	63.4	63.4
8-9 AM	1204	0.0	OFF	1204	0	0.00	0	64.1	64.1	64.1
9-10 AM	1308	0.0	OFF	1308	0	0.00	0	64.0	64.0	64.0
10-11 AM	1468	0.0	OFF	1468	0	0.00	0	63.7	63.7	63.7
11AM-NOON	1506	0.0	OFF	1506	0	0.00	0	63.6	63.6	63.6
NOON-1PM	1770	0.0	OFF	1770	0	0.00	0	63.1	63.1	63.1
1-2 PM	2189	0.0	OFF	2189	0	0.00	0	62.3	62.3	62.3
2-3 PM	2197	0.0	OFF	2197	0	0.00	0	62.3	62.3	62.3
3-4 PM	2901	0.0	OFF	2901	0	0.00	0	56.8	56.8	56.8
4-5 PM	2766	0.0	OFF	2766	0	0.00	0	58.2	58.2	58.2
5-6 PM	2224	0.0	OFF	2224	0	0.00	0	62.2	62.2	62.2
6-7 PM	1482	0.0	1499	1482	0	1.88	25	63.7	49.1	32.0
7-8 PM	1137	0.0	1500	1137	0	0.56	0	64.3	59.0	40.6
8-9 PM	1181	0.0	1500	1181	0	0.61	0	64.2	58.4	39.1
9-10 PM	908	0.0	1500	908	0	0.51	0	64.7	59.8	42.0
10-11 PM	694	0.0	1500	694	0	0.49	0	65.1	60.3	42.8
11PM-MID	318	0.0	1500	318	0	0.45	0	65.8	61.2	44.2

"OFF" INDICATES NO ROAD WORK (ALL LANES OPEN TO TRAFFIC)

----- SITE BREAKDOWN DELAYS -----	
BREAKDOWN DURATION (MINS)	0
RANGE OF QUEUE DELAY - MIN (VEH-H) MAX	0.0
AV BREAKDOWNS PER DAY	0.00
AV QUEUE DELAY/DAY (VEH-H)	0.0
AV TOTAL DELAY/DAY (VEH-H)	0.0

----- SITE ACCIDENT DELAYS -----	
BREAKDOWN DURATION (MINS)	0
RANGE OF QUEUE DELAY - MIN (VEH-H) MAX	0
AV BREAKDOWNS PER DAY	0
AV QUEUE DELAY/DAY (VEH-H)	0
AV TOTAL DELAY/DAY (VEH-H)	0

AVERAGE ACCIDENT NUMBERS (PIA/DAY)	
MAIN ROUTE WITHOUT WORKS	0.0343
MAIN ROUTE WITH WORKS	0.0338
'DIVERSION'	0.0000
<small>PIA: Personal Injury Accidents</small>	
IMPACTS ON ROAD USERS	
ROAD USER COSTS PER DAY	\$1,119
CONGESTED HOURS PER DAY*	0

*Delays Exceeding User-Specified Maximum

IH 43: CTH Y TO HALE INTERCHANGE (WAUKESHA AND MILWAUKEE COUNTIES)
NIGHTTIME CLOSURE
NO DIVERSION ROUTE (MAX QUEUE METHOD)

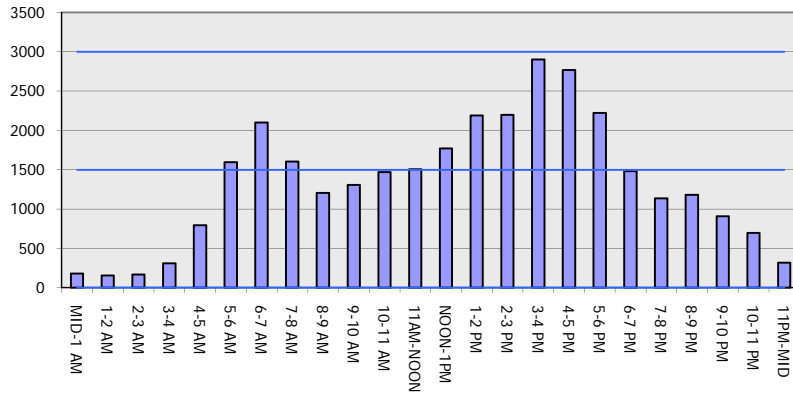
OCTOBER

Analyzed for 2009
 Construction Season

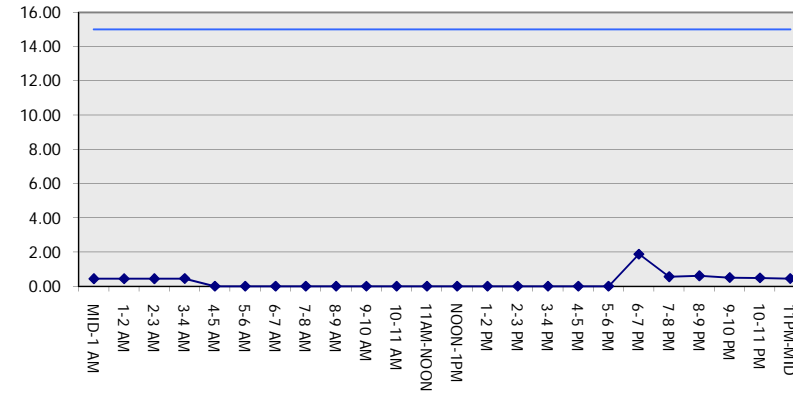
GRAPHICAL REPRESENTATION OF TRAFFIC MODEL INPUT AND OUTPUT

FRIDAY SOUTHBOUND DIRECTION

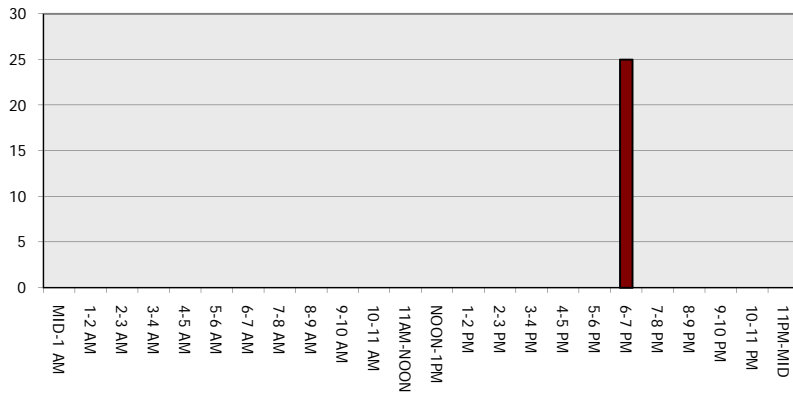
Main Route - Traffic Demand (Vehicles Per Hour)



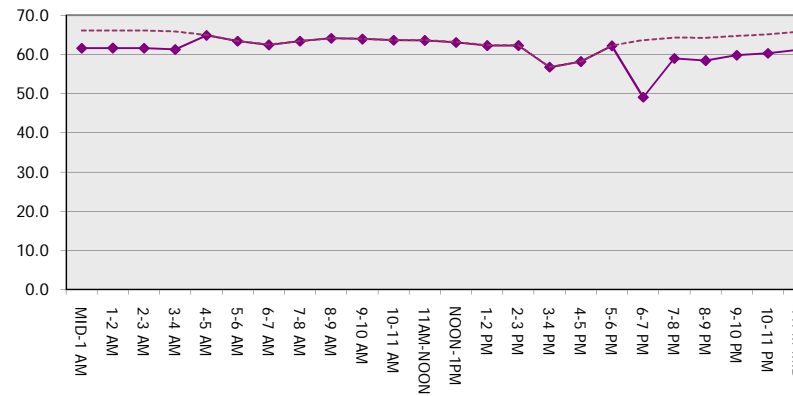
Main Route Average Delay Per Vehicle (Minutes)



Main Route - Average Queue Length (Vehicles)



Main Route - Average Speed (MPH)



IH 43: CTH Y TO HALE INTERCHANGE (WAUKESHA AND MILWAUKEE COUNTIES) NIGHTTIME CLOSURE NO DIVERSION ROUTE (MAX QUEUE METHOD)	OCTOBER
	Analyzed for 2009 Construction Season

SUMMARY OF TRAFFIC MODEL OUTPUT

FRIDAY NORTHBOUND DIRECTION

TIME OF DAY	FLOWS AND CAPACITY IN VEH/HR						AVERAGE SPEEDS IN MPH			
	MAIN ROUTE		SITE CAPA CITY	FLOW		AV.DEL PER VEH (MINS)	AVERAGE QUEUE (VEH)	MAIN ROUTE		SITE
	DEMAND FLOW	PCT HEAVY		MAIN ROUTE	'DIVER TED'			WITHOUT WORK ZONE	WITH WORK ZONE	
MID-1 AM	175	0.0	1500	175	0	0.44	0	66.1	61.6	44.8
1-2 AM	152	0.0	1500	152	0	0.44	0	66.1	61.7	44.9
2-3 AM	221	0.0	1500	221	0	0.44	0	66.0	61.5	44.6
3-4 AM	461	0.0	1500	461	0	0.47	0	65.5	60.9	43.7
4-5 AM	1452	0.0	OFF	1452	0	0.00	0	63.7	63.7	63.7
5-6 AM	2776	0.0	OFF	2776	0	0.00	0	58.1	58.1	58.1
6-7 AM	2894	0.0	OFF	2894	0	0.00	0	56.8	56.8	56.8
7-8 AM	2237	0.0	OFF	2237	0	0.00	0	62.2	62.2	62.2
8-9 AM	1719	0.0	OFF	1719	0	0.00	0	63.2	63.2	63.2
9-10 AM	1604	0.0	OFF	1604	0	0.00	0	63.4	63.4	63.4
10-11 AM	1522	0.0	OFF	1522	0	0.00	0	63.5	63.5	63.5
11AM-NOON	1625	0.0	OFF	1625	0	0.00	0	63.3	63.3	63.3
NOON-1PM	1693	0.0	OFF	1693	0	0.00	0	63.2	63.2	63.2
1-2 PM	1950	0.0	OFF	1950	0	0.00	0	62.7	62.7	62.7
2-3 PM	1770	0.0	OFF	1770	0	0.00	0	63.1	63.1	63.1
3-4 PM	2492	0.0	OFF	2492	0	0.00	0	61.0	61.0	61.0
4-5 PM	2627	0.0	OFF	2627	0	0.00	0	59.6	59.6	59.6
5-6 PM	2029	0.0	OFF	2029	0	0.00	0	62.6	62.6	62.6
6-7 PM	1376	0.0	1499	1376	0	0.87	0	63.8	56.0	33.9
7-8 PM	1007	0.0	1500	1007	0	0.52	0	64.5	59.6	41.7
8-9 PM	912	0.0	1500	912	0	0.51	0	64.7	59.7	42.0
9-10 PM	876	0.0	1500	876	0	0.51	0	64.8	59.9	42.1
10-11 PM	646	0.0	1500	646	0	0.49	0	65.2	60.4	43.0
11PM-MID	292	0.0	1500	292	0	0.45	0	65.8	61.3	44.3

"OFF" INDICATES NO ROAD WORK (ALL LANES OPEN TO TRAFFIC)

----- SITE BREAKDOWN DELAYS -----	
BREAKDOWN DURATION (MINS)	0
RANGE OF QUEUE DELAY - MIN (VEH-H) MAX	0.0
AV BREAKDOWNS PER DAY	0.00
AV QUEUE DELAY/DAY (VEH-H)	0.0
AV TOTAL DELAY/DAY (VEH-H)	0.0

----- SITE ACCIDENT DELAYS -----	
BREAKDOWN DURATION (MINS)	0
RANGE OF QUEUE DELAY - MIN (VEH-H) MAX	0
AV BREAKDOWNS PER DAY	0
AV QUEUE DELAY/DAY (VEH-H)	0
AV TOTAL DELAY/DAY (VEH-H)	0

AVERAGE ACCIDENT NUMBERS (PIA/DAY)	
MAIN ROUTE WITHOUT WORKS	0.0368
MAIN ROUTE WITH WORKS	0.0364
'DIVERSION'	0.0000

PIA: Personal Injury Accidents

ECONOMIC IMPACT ON ROAD USERS	
ROAD USER COSTS PER DAY	\$727
CONGESTED HOURS PER DAY*	0

*Delays Exceeding User-Specified Maximum

IH 43: CTH Y TO HALE INTERCHANGE (WAUKESHA AND MILWAUKEE COUNTIES)
NIGHTTIME CLOSURE
NO DIVERSION ROUTE (MAX QUEUE METHOD)

OCTOBER

Analyzed for 2009
 Construction Season

GRAPHICAL REPRESENTATION OF TRAFFIC MODEL INPUT AND OUTPUT
FRIDAY NORTHBOUND DIRECTION

