

USH 45: STH 190 TO NORTH AVE (MILWAUKEE COUNTY) NIGHTTIME CLOSURE NO DIVERSION ROUTE (MAX QUEUE METHOD)	OCTOBER
	Analyzed for 2009 Construction Season

SUMMARY OF TRAFFIC MODEL OUTPUT

SUNDAY SOUTHBOUND DIRECTION

TIME OF DAY	FLOWS AND CAPACITY IN VEH/HR						AVERAGE SPEEDS IN MPH			
	MAIN ROUTE		SITE CAPA CITY	FLOW		AV.DEL PER VEH (MINS)	AVERAGE QUEUE (VEH)	MAIN ROUTE		SITE
	DEMAND FLOW	PCT HEAVY		MAIN ROUTE	'DIVER TED'			WITHOUT WORK ZONE	WITH WORK ZONE	
MID-1 AM	843	0.0	3000	843	0	0.35	0	69.7	58.3	49.7
1-2 AM	473	0.0	3000	473	0	0.36	0	70.2	58.4	49.7
2-3 AM	429	0.0	3000	429	0	0.36	0	70.2	58.5	49.7
3-4 AM	307	0.0	3000	307	0	0.36	0	70.2	58.5	49.7
4-5 AM	279	0.0	3000	279	0	0.36	0	70.2	58.5	49.7
5-6 AM	487	0.0	3000	487	0	0.36	0	70.1	58.4	49.7
6-7 AM	907	0.0	3000	907	0	0.35	0	69.6	58.2	49.7
7-8 AM	1158	0.0	3000	1158	0	0.35	0	69.3	58.1	49.7
8-9 AM	1706	0.0	3000	1706	0	0.34	0	68.6	57.9	49.7
9-10 AM	2589	0.0	OFF	2589	0	0.00	0	67.5	67.5	67.5
10-11 AM	3221	0.0	OFF	3221	0	0.00	0	66.8	66.8	66.8
11AM-NOON	3822	0.0	OFF	3822	0	0.00	0	64.8	64.8	64.8
NOON-1PM	4438	0.0	OFF	4438	0	0.00	0	60.5	60.5	60.5
1-2 PM	4493	0.0	OFF	4493	0	0.00	0	60.2	60.2	60.2
2-3 PM	4698	0.0	OFF	4698	0	0.00	0	58.7	58.7	58.7
3-4 PM	4446	0.0	OFF	4446	0	0.00	0	60.5	60.5	60.5
4-5 PM	4159	0.0	OFF	4159	0	0.00	0	62.4	62.4	62.4
5-6 PM	4034	0.0	OFF	4034	0	0.00	0	63.3	63.3	63.3
6-7 PM	3803	0.0	OFF	3803	0	0.00	0	64.9	64.9	64.9
7-8 PM	3010	0.0	2999	3010	0	1.65	52	67.0	35.6	37.9
8-9 PM	2282	0.0	3000	2282	0	0.35	0	67.9	57.0	48.8
9-10 PM	1641	0.0	3000	1641	0	0.34	0	68.7	57.9	49.7
10-11 PM	1078	0.0	3000	1078	0	0.35	0	69.4	58.2	49.7
11PM-MID	663	0.0	3000	663	0	0.36	0	69.9	58.4	49.7

"OFF" INDICATES NO ROAD WORK (ALL LANES OPEN TO TRAFFIC)

----- SITE BREAKDOWN DELAYS -----	
BREAKDOWN DURATION (MINS)	0
RANGE OF QUEUE DELAY - MIN (VEH-H) MAX	0.0
AV BREAKDOWNS PER DAY	0.00
AV QUEUE DELAY/DAY (VEH-H)	0.0
AV TOTAL DELAY/DAY (VEH-H)	0.0

----- SITE ACCIDENT DELAYS -----	
BREAKDOWN DURATION (MINS)	0
RANGE OF QUEUE DELAY - MIN (VEH-H) MAX	0
AV BREAKDOWNS PER DAY	0
AV QUEUE DELAY/DAY (VEH-H)	0
AV TOTAL DELAY/DAY (VEH-H)	0

AVERAGE ACCIDENT NUMBERS (PIA/DAY)	
MAIN ROUTE WITHOUT WORKS	0.0184
MAIN ROUTE WITH WORKS	0.0174
'DIVERSION'	0.0000
<small>PIA: Personal Injury Accidents</small>	
IMPACTS ON ROAD USERS	
ROAD USER COSTS PER DAY	\$2,194
CONGESTED HOURS PER DAY*	0

*Delays Exceeding User-Specified Maximum

USH 45: STH 190 TO NORTH AVE (MILWAUKEE COUNTY)
NIGHTTIME CLOSURE
NO DIVERSION ROUTE (MAX QUEUE METHOD)

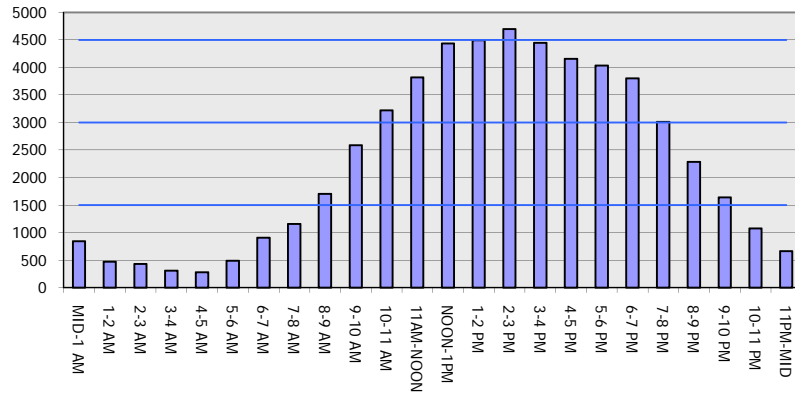
OCTOBER

Analyzed for 2009
 Construction Season

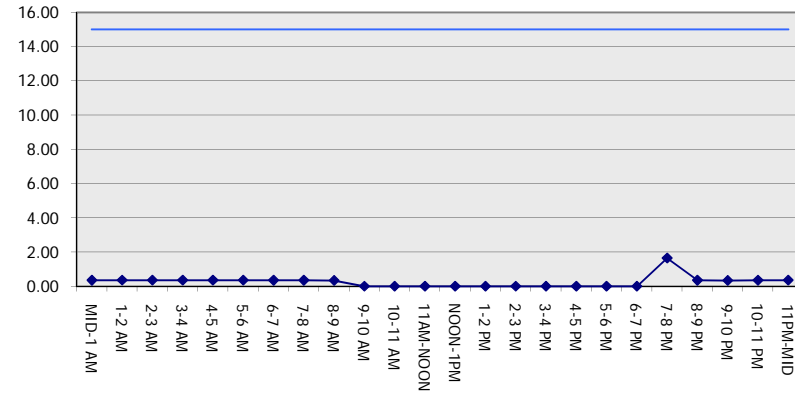
GRAPHICAL REPRESENTATION OF TRAFFIC MODEL INPUT AND OUTPUT

SUNDAY SOUTHBOUND DIRECTION

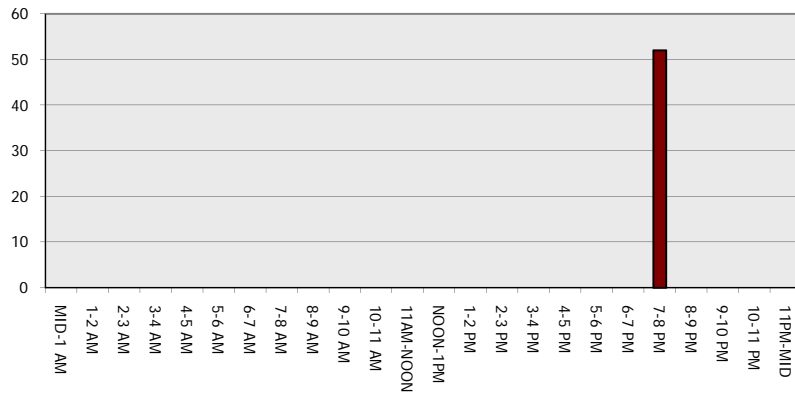
Main Route - Traffic Demand (Vehicles Per Hour)



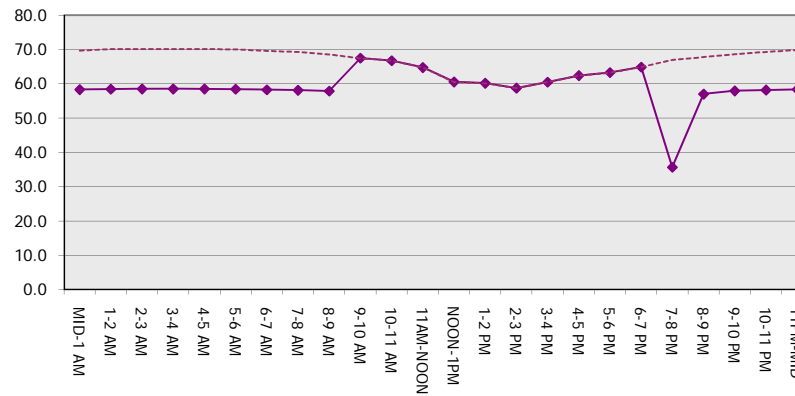
Main Route Average Delay Per Vehicle (Minutes)



Main Route - Average Queue Length (Vehicles)



Main Route - Average Speed (MPH)



USH 45: STH 190 TO NORTH AVE (MILWAUKEE COUNTY) NIGHTTIME CLOSURE NO DIVERSION ROUTE (MAX QUEUE METHOD)	OCTOBER
	Analyzed for 2009 Construction Season

SUMMARY OF TRAFFIC MODEL OUTPUT

SUNDAY NORTHBOUND DIRECTION

TIME OF DAY	FLOWS AND CAPACITY IN VEH/HR							AVERAGE SPEEDS IN MPH		
	MAIN ROUTE		SITE CAPA CITY	FLOW		AV.DEL PER VEH (MINS)	AVERAGE QUEUE (VEH)	MAIN ROUTE		SITE
	DEMAND FLOW	PCT HEAVY		MAIN ROUTE	'DIVER TED'			WITHOUT WORK ZONE	WITH WORK ZONE	
MID-1 AM	1280	0.0	3000	1280	0	0.35	0	69.1	58.1	49.7
1-2 AM	827	0.0	3000	827	0	0.35	0	69.7	58.3	49.7
2-3 AM	827	0.0	3000	827	0	0.35	0	69.7	58.3	49.7
3-4 AM	560	0.0	3000	560	0	0.36	0	70.0	58.4	49.7
4-5 AM	548	0.0	3000	548	0	0.36	0	70.0	58.4	49.7
5-6 AM	738	0.0	3000	738	0	0.35	0	69.8	58.3	49.7
6-7 AM	1017	0.0	3000	1017	0	0.35	0	69.5	58.2	49.7
7-8 AM	1299	0.0	3000	1299	0	0.35	0	69.1	58.1	49.7
8-9 AM	1799	0.0	3000	1799	0	0.34	0	68.5	57.9	49.7
9-10 AM	2514	0.0	OFF	2514	0	0.00	0	67.6	67.6	67.6
10-11 AM	3073	0.0	OFF	3073	0	0.00	0	66.9	66.9	66.9
11AM-NOON	3394	0.0	OFF	3394	0	0.00	0	66.5	66.5	66.5
NOON-1PM	3889	0.0	OFF	3889	0	0.00	0	64.3	64.3	64.3
1-2 PM	3876	0.0	OFF	3876	0	0.00	0	64.4	64.4	64.4
2-3 PM	3915	0.0	OFF	3915	0	0.00	0	64.1	64.1	64.1
3-4 PM	4242	0.0	OFF	4242	0	0.00	0	61.9	61.9	61.9
4-5 PM	3919	0.0	OFF	3919	0	0.00	0	64.1	64.1	64.1
5-6 PM	3907	0.0	OFF	3907	0	0.00	0	64.1	64.1	64.1
6-7 PM	3180	0.0	OFF	3180	0	0.00	0	66.8	66.8	66.8
7-8 PM	2952	0.0	2999	2952	0	0.89	12	67.1	45.5	38.5
8-9 PM	2235	0.0	3000	2235	0	0.33	0	67.9	57.7	49.7
9-10 PM	1967	0.0	3000	1967	0	0.34	0	68.3	57.8	49.7
10-11 PM	1566	0.0	3000	1566	0	0.34	0	68.8	57.9	49.7
11PM-MID	1073	0.0	3000	1073	0	0.35	0	69.4	58.2	49.7

"OFF" INDICATES NO ROAD WORK (ALL LANES OPEN TO TRAFFIC)

----- SITE BREAKDOWN DELAYS -----	
BREAKDOWN DURATION (MINS)	0
RANGE OF QUEUE DELAY - MIN (VEH-H) MAX	0.0
AV BREAKDOWNS PER DAY	0.00
AV QUEUE DELAY/DAY (VEH-H)	0.0
AV TOTAL DELAY/DAY (VEH-H)	0.0

----- SITE ACCIDENT DELAYS -----	
BREAKDOWN DURATION (MINS)	0
RANGE OF QUEUE DELAY - MIN (VEH-H) MAX	0
AV BREAKDOWNS PER DAY	0
AV QUEUE DELAY/DAY (VEH-H)	0
AV TOTAL DELAY/DAY (VEH-H)	0

AVERAGE ACCIDENT NUMBERS (PIA/DAY)	
MAIN ROUTE WITHOUT WORKS	0.0182
MAIN ROUTE WITH WORKS	0.0170
'DIVERSION'	0.0000

PIA: Personal Injury Accidents

ECONOMIC IMPACT ON ROAD USERS	
ROAD USER COSTS PER DAY	\$1,910
CONGESTED HOURS PER DAY*	0

*Delays Exceeding User-Specified Maximum

**USH 45: STH 190 TO NORTH AVE (MILWAUKEE COUNTY)
NIGHTTIME CLOSURE
NO DIVERSION ROUTE (MAX QUEUE METHOD)**

OCTOBER

Analyzed for 2009
Construction Season

**GRAPHICAL REPRESENTATION OF TRAFFIC MODEL INPUT AND OUTPUT
SUNDAY NORTHBOUND DIRECTION**

