

USH 45: STH 190 TO NORTH AVE (MILWAUKEE COUNTY) NIGHTTIME CLOSURE NO DIVERSION ROUTE (MAX QUEUE METHOD)	OCTOBER
	Analyzed for 2009 Construction Season

SUMMARY OF TRAFFIC MODEL OUTPUT

SATURDAY SOUTHBOUND DIRECTION

TIME OF DAY	FLOWS AND CAPACITY IN VEH/HR						AVERAGE SPEEDS IN MPH			
	MAIN ROUTE		SITE CAPA CITY	FLOW		AV.DEL PER VEH (MINS)	AVERAGE QUEUE (VEH)	MAIN ROUTE		SITE
	DEMAND FLOW	PCT HEAVY		MAIN ROUTE	'DIVER TED'			WITHOUT WORK ZONE	WITH WORK ZONE	
MID-1 AM	900	0.0	3000	900	0	0.35	0	69.6	58.2	49.7
1-2 AM	491	0.0	3000	491	0	0.36	0	70.1	58.4	49.7
2-3 AM	478	0.0	3000	478	0	0.36	0	70.1	58.4	49.7
3-4 AM	349	0.0	3000	349	0	0.36	0	70.2	58.5	49.7
4-5 AM	474	0.0	3000	474	0	0.36	0	70.2	58.4	49.7
5-6 AM	906	0.0	3000	906	0	0.35	0	69.6	58.2	49.7
6-7 AM	1845	0.0	3000	1845	0	0.34	0	68.4	57.8	49.7
7-8 AM	2484	0.0	2999	2484	0	0.42	0	67.6	55.3	46.4
8-9 AM	3295	0.0	OFF	3295	0	0.00	0	66.6	66.6	66.6
9-10 AM	3459	0.0	OFF	3459	0	0.00	0	66.4	66.4	66.4
10-11 AM	4030	0.0	OFF	4030	0	0.00	0	63.3	63.3	63.3
11AM-NOON	4633	0.0	OFF	4633	0	0.00	0	59.2	59.2	59.2
NOON-1PM	4724	0.0	OFF	4724	0	0.00	0	58.6	58.6	58.6
1-2 PM	4384	0.0	OFF	4384	0	0.00	0	60.9	60.9	60.9
2-3 PM	4629	0.0	OFF	4629	0	0.00	0	59.2	59.2	59.2
3-4 PM	4460	0.0	OFF	4460	0	0.00	0	60.4	60.4	60.4
4-5 PM	4713	0.0	OFF	4713	0	0.00	0	58.7	58.7	58.7
5-6 PM	4111	0.0	OFF	4111	0	0.00	0	62.8	62.8	62.8
6-7 PM	3886	0.0	2999	3886	0	8.34+	478	64.3	14.3	37.3
7-8 PM	2980	0.0	2999	2884	96	16.28+	857	67.0	10.4	37.3
8-9 PM	2194	0.0	2999	2194	0	5.73	395	68.0	18.8	43.5
9-10 PM	2127	0.0	3000	2127	0	0.33	0	68.1	57.7	49.7
10-11 PM	1894	0.0	3000	1894	0	0.34	0	68.4	57.8	49.7
11PM-MID	1314	0.0	3000	1314	0	0.35	0	69.1	58.1	49.7

"OFF" INDICATES NO ROAD WORK (ALL LANES OPEN TO TRAFFIC)

+ INDICATES QUEUEING EXCEEDS USER-SPECIFIED MAXIMUM LIMIT

----- SITE BREAKDOWN DELAYS -----	
BREAKDOWN DURATION (MINS)	0
RANGE OF QUEUE DELAY - MIN (VEH-H) MAX	0.0
AV BREAKDOWNS PER DAY	0.00
AV QUEUE DELAY/DAY (VEH-H)	0.0
AV TOTAL DELAY/DAY (VEH-H)	0.0

----- SITE ACCIDENT DELAYS -----	
BREAKDOWN DURATION (MINS)	0
RANGE OF QUEUE DELAY - MIN (VEH-H) MAX	0
AV BREAKDOWNS PER DAY	0
AV QUEUE DELAY/DAY (VEH-H)	0
AV TOTAL DELAY/DAY (VEH-H)	0

AVERAGE ACCIDENT NUMBERS (PIA/DAY)	
MAIN ROUTE WITHOUT WORKS	0.0216
MAIN ROUTE WITH WORKS	0.0201
'DIVERSION'	0.0001
<small>PIA: Personal Injury Accidents</small>	
IMPACTS ON ROAD USERS	
ROAD USER COSTS PER DAY	\$28,231
CONGESTED HOURS PER DAY*	2

*Delays Exceeding User-Specified Maximum

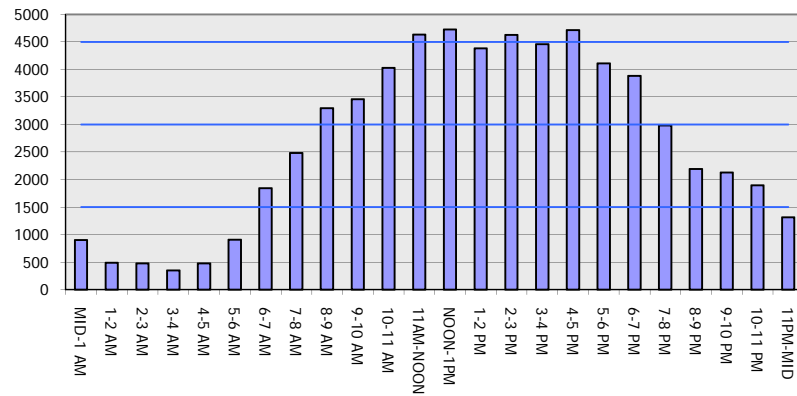
USH 45: STH 190 TO NORTH AVE (MILWAUKEE COUNTY)
NIGHTTIME CLOSURE
NO DIVERSION ROUTE (MAX QUEUE METHOD)

OCTOBER

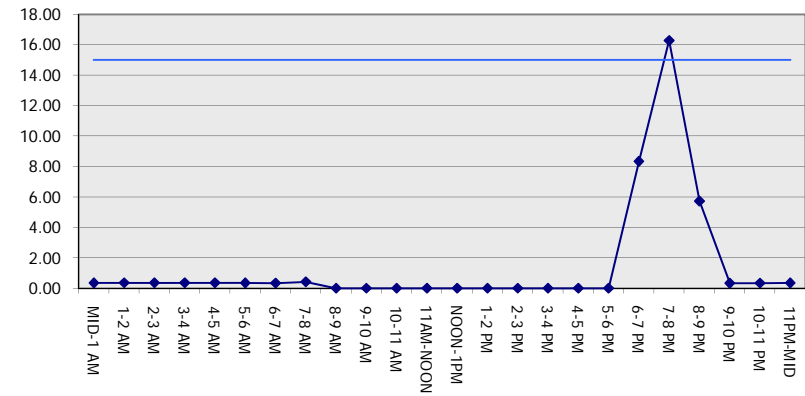
Analyzed for 2009
 Construction Season

GRAPHICAL REPRESENTATION OF TRAFFIC MODEL INPUT AND OUTPUT
SATURDAY SOUTHBOUND DIRECTION

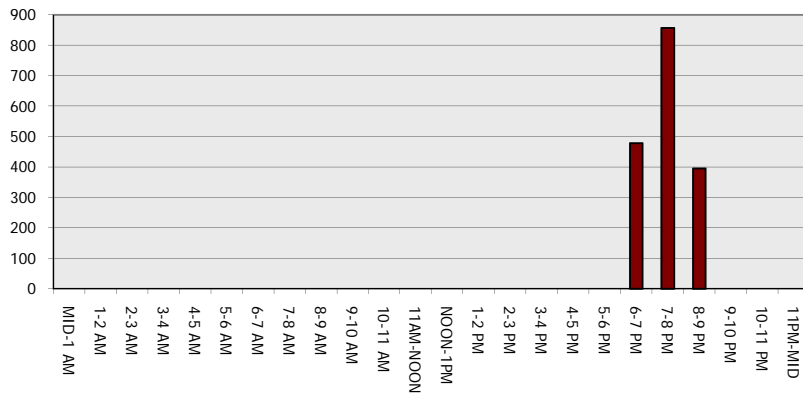
Main Route - Traffic Demand (Vehicles Per Hour)



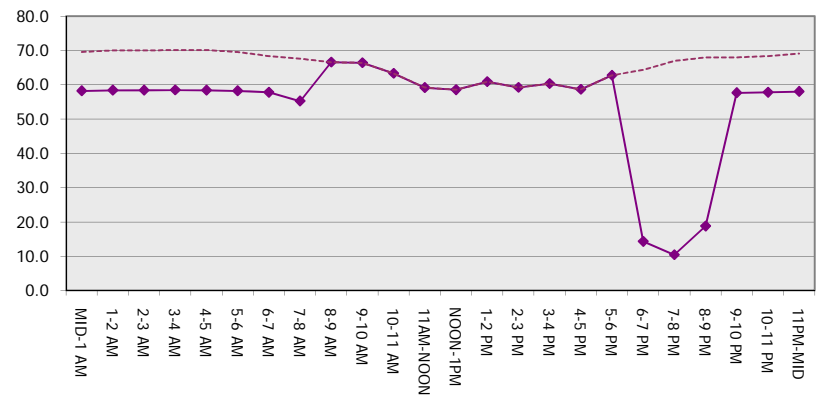
Main Route Average Delay Per Vehicle (Minutes)



Main Route - Average Queue Length (Vehicles)



Main Route - Average Speed (MPH)



USH 45: STH 190 TO NORTH AVE (MILWAUKEE COUNTY) NIGHTTIME CLOSURE NO DIVERSION ROUTE (MAX QUEUE METHOD)	OCTOBER
	Analyzed for 2009 Construction Season

SUMMARY OF TRAFFIC MODEL OUTPUT

SATURDAY NORTHBOUND DIRECTION

TIME OF DAY	FLOWS AND CAPACITY IN VEH/HR							AVERAGE SPEEDS IN MPH		
	MAIN ROUTE		SITE CAPA CITY	FLOW		AV.DEL PER VEH (MINS)	AVERAGE QUEUE (VEH)	MAIN ROUTE		SITE
	DEMAND FLOW	PCT HEAVY		MAIN ROUTE	'DIVER TED'			WITHOUT WORK ZONE	WITH WORK ZONE	
MID-1 AM	1256	0.0	3000	1256	0	0.35	0	69.2	58.1	49.7
1-2 AM	895	0.0	3000	895	0	0.35	0	69.6	58.2	49.7
2-3 AM	836	0.0	3000	836	0	0.35	0	69.7	58.3	49.7
3-4 AM	681	0.0	3000	681	0	0.36	0	69.9	58.4	49.7
4-5 AM	839	0.0	3000	839	0	0.35	0	69.7	58.3	49.7
5-6 AM	1357	0.0	3000	1357	0	0.34	0	69.1	58.1	49.7
6-7 AM	1928	0.0	3000	1928	0	0.34	0	68.3	57.8	49.7
7-8 AM	2522	0.0	2999	2522	0	0.42	0	67.6	55.3	46.4
8-9 AM	3118	0.0	OFF	3118	0	0.00	0	66.9	66.9	66.9
9-10 AM	3826	0.0	OFF	3826	0	0.00	0	64.7	64.7	64.7
10-11 AM	4259	0.0	OFF	4259	0	0.00	0	61.8	61.8	61.8
11AM-NOON	4334	0.0	OFF	4334	0	0.00	0	61.2	61.2	61.2
NOON-1PM	4494	0.0	OFF	4494	0	0.00	0	60.2	60.2	60.2
1-2 PM	4335	0.0	OFF	4335	0	0.00	0	61.2	61.2	61.2
2-3 PM	4736	0.0	OFF	4736	0	0.00	0	58.5	58.5	58.5
3-4 PM	4465	0.0	OFF	4465	0	0.00	0	60.4	60.4	60.4
4-5 PM	4466	0.0	OFF	4466	0	0.00	0	60.4	60.4	60.4
5-6 PM	4065	0.0	OFF	4065	0	0.00	0	63.1	63.1	63.1
6-7 PM	3428	0.0	2999	3428	0	4.67	245	66.4	19.8	37.3
7-8 PM	3061	0.0	2999	3061	0	9.58	488	66.9	13.0	37.3
8-9 PM	2472	0.0	2999	2472	0	3.80	245	67.7	23.0	41.2
9-10 PM	2445	0.0	3000	2445	0	0.37	0	67.7	56.6	48.1
10-11 PM	2492	0.0	3000	2492	0	0.40	0	67.6	55.8	47.0
11PM-MID	1887	0.0	3000	1887	0	0.34	0	68.4	57.8	49.7

"OFF" INDICATES NO ROAD WORK (ALL LANES OPEN TO TRAFFIC)

----- SITE BREAKDOWN DELAYS -----	
BREAKDOWN DURATION (MINS)	0
RANGE OF QUEUE DELAY - MIN	0.0
(VEH-H) MAX	0.0
AV BREAKDOWNS PER DAY	0.00
AV QUEUE DELAY/DAY (VEH-H)	0.0
AV TOTAL DELAY/DAY (VEH-H)	0.0

----- SITE ACCIDENT DELAYS -----	
BREAKDOWN DURATION (MINS)	0
RANGE OF QUEUE DELAY - MIN	0
(VEH-H) MAX	0
AV BREAKDOWNS PER DAY	0
AV QUEUE DELAY/DAY (VEH-H)	0
AV TOTAL DELAY/DAY (VEH-H)	0

AVERAGE ACCIDENT NUMBERS (PIA/DAY)	
MAIN ROUTE WITHOUT WORKS	0.0228
MAIN ROUTE WITH WORKS	0.0211
'DIVERSION'	0.0000

PIA: Personal Injury Accidents

ECONOMIC IMPACT ON ROAD USERS	
ROAD USER COSTS PER DAY	\$17,537
CONGESTED HOURS PER DAY*	0

*Delays Exceeding User-Specified Maximum

**USH 45: STH 190 TO NORTH AVE (MILWAUKEE COUNTY)
NIGHTTIME CLOSURE
NO DIVERSION ROUTE (MAX QUEUE METHOD)**

OCTOBER

Analyzed for 2009
Construction Season

**GRAPHICAL REPRESENTATION OF TRAFFIC MODEL INPUT AND OUTPUT
SATURDAY NORTHBOUND DIRECTION**

