

USH 45: STH 190 TO NORTH AVE (MILWAUKEE COUNTY) NIGHTTIME CLOSURE NO DIVERSION ROUTE (MAX QUEUE METHOD)	OCTOBER
	Analyzed for 2009 Construction Season

SUMMARY OF TRAFFIC MODEL OUTPUT

MON-THUR SOUTHBOUND DIRECTION

TIME OF DAY	FLOWS AND CAPACITY IN VEH/HR						AVERAGE SPEEDS IN MPH			
	MAIN ROUTE		SITE CAPA CITY	FLOW		AV.DEL PER VEH (MINS)	AVERAGE QUEUE (VEH)	MAIN ROUTE		SITE
	DEMAND FLOW	PCT HEAVY		MAIN ROUTE	'DIVER TED'			WITHOUT WORK ZONE	WITH WORK ZONE	
MID-1 AM	567	0.0	3000	567	0	0.36	0	70.0	58.4	49.7
1-2 AM	405	0.0	3000	405	0	0.36	0	70.2	58.5	49.7
2-3 AM	374	0.0	3000	374	0	0.36	0	70.2	58.5	49.7
3-4 AM	463	0.0	3000	463	0	0.36	0	70.2	58.4	49.7
4-5 AM	837	0.0	3000	837	0	0.35	0	69.7	58.3	49.7
5-6 AM	2369	0.0	OFF	2369	0	0.00	0	67.8	67.8	67.8
6-7 AM	5197	0.0	OFF	5197	0	0.00	0	55.3	55.3	55.3
7-8 AM	5757	0.0	OFF	5757	0	0.00	0	51.5	51.5	51.5
8-9 AM	5304	0.0	OFF	5304	0	0.00	0	54.6	54.6	54.6
9-10 AM	4244	0.0	OFF	4244	0	0.00	0	61.9	61.9	61.9
10-11 AM	4000	0.0	OFF	4000	0	0.00	0	63.5	63.5	63.5
11AM-NOON	4258	0.0	OFF	4258	0	0.00	0	61.8	61.8	61.8
NOON-1PM	4411	0.0	OFF	4411	0	0.00	0	60.7	60.7	60.7
1-2 PM	4273	0.0	OFF	4273	0	0.00	0	61.7	61.7	61.7
2-3 PM	5114	0.0	OFF	5114	0	0.00	0	55.9	55.9	55.9
3-4 PM	4992	0.0	OFF	4992	0	0.00	0	56.8	56.8	56.8
4-5 PM	4218	0.0	OFF	4218	0	0.00	0	62.0	62.0	62.0
5-6 PM	3928	0.0	OFF	3928	0	0.00	0	64.0	64.0	64.0
6-7 PM	4189	0.0	OFF	4189	0	0.00	0	62.2	62.2	62.2
7-8 PM	2848	0.0	2999	2848	0	0.82	14	67.2	46.6	40.7
8-9 PM	2218	0.0	3000	2218	0	0.33	0	68.0	57.7	49.7
9-10 PM	1972	0.0	3000	1972	0	0.34	0	68.3	57.8	49.7
10-11 PM	1543	0.0	3000	1543	0	0.34	0	68.8	58.0	49.7
11PM-MID	1238	0.0	3000	1238	0	0.35	0	69.2	58.1	49.7

"OFF" INDICATES NO ROAD WORK (ALL LANES OPEN TO TRAFFIC)

----- SITE BREAKDOWN DELAYS -----	
BREAKDOWN DURATION (MINS)	0
RANGE OF QUEUE DELAY - MIN (VEH-H) MAX	0.0
AV BREAKDOWNS PER DAY	0.00
AV QUEUE DELAY/DAY (VEH-H)	0.0
AV TOTAL DELAY/DAY (VEH-H)	0.0

----- SITE ACCIDENT DELAYS -----	
BREAKDOWN DURATION (MINS)	0
RANGE OF QUEUE DELAY - MIN (VEH-H) MAX	0
AV BREAKDOWNS PER DAY	0
AV QUEUE DELAY/DAY (VEH-H)	0
AV TOTAL DELAY/DAY (VEH-H)	0

AVERAGE ACCIDENT NUMBERS (PIA/DAY)	
MAIN ROUTE WITHOUT WORKS	0.0250
MAIN ROUTE WITH WORKS	0.0242
'DIVERSION'	0.0000
PIA: Personal Injury Accidents	
IMPACTS ON ROAD USERS	
ROAD USER COSTS PER DAY	\$1,263
CONGESTED HOURS PER DAY*	0

*Delays Exceeding User-Specified Maximum

**USH 45: STH 190 TO NORTH AVE (MILWAUKEE COUNTY)
NIGHTTIME CLOSURE
NO DIVERSION ROUTE (MAX QUEUE METHOD)**

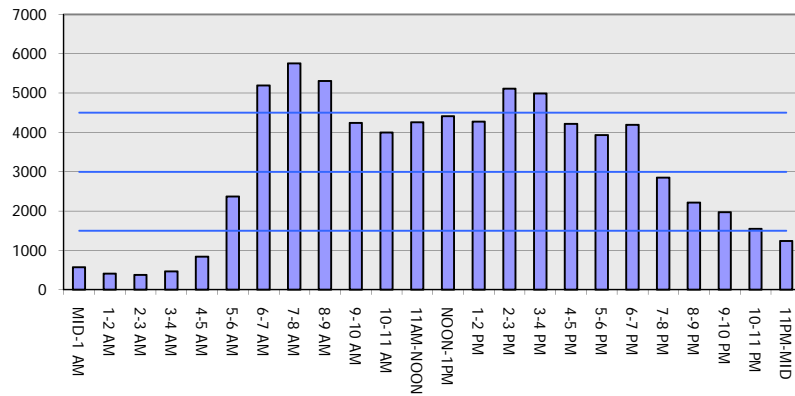
OCTOBER

Analyzed for 2009
Construction Season

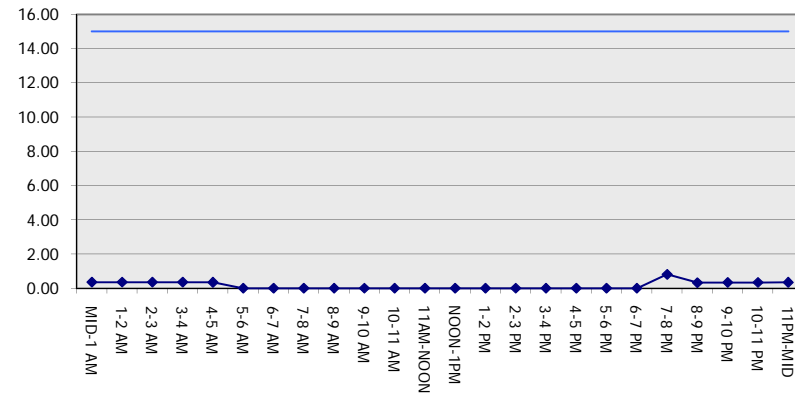
GRAPHICAL REPRESENTATION OF TRAFFIC MODEL INPUT AND OUTPUT

MON-THUR SOUTHBOUND DIRECTION

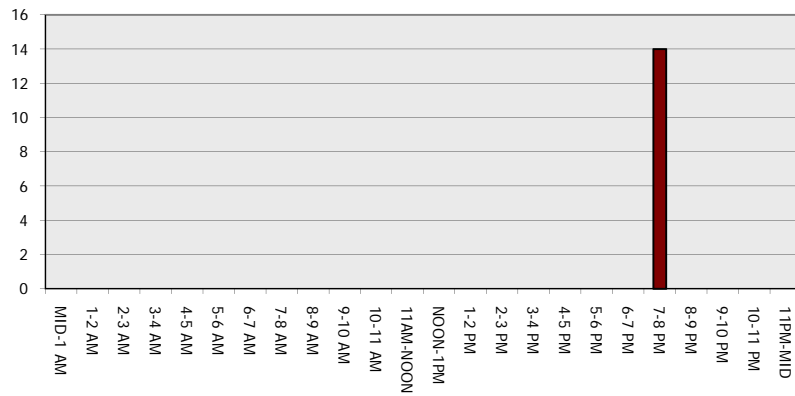
Main Route - Traffic Demand (Vehicles Per Hour)



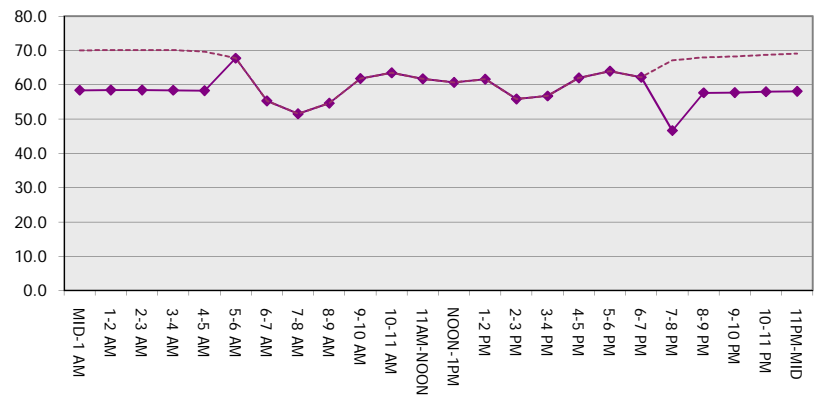
Main Route Average Delay Per Vehicle (Minutes)



Main Route - Average Queue Length (Vehicles)



Main Route - Average Speed (MPH)



USH 45: STH 190 TO NORTH AVE (MILWAUKEE COUNTY) NIGHTTIME CLOSURE NO DIVERSION ROUTE (MAX QUEUE METHOD)	OCTOBER
	Analyzed for 2009 Construction Season

SUMMARY OF TRAFFIC MODEL OUTPUT

MON-THUR NORTHBOUND DIRECTION

TIME OF DAY	FLOWS AND CAPACITY IN VEH/HR						AVERAGE SPEEDS IN MPH			
	MAIN ROUTE		SITE CAPA CITY	FLOW		AV.DEL PER VEH (MINS)	AVERAGE QUEUE (VEH)	MAIN ROUTE		SITE
	DEMAND FLOW	PCT HEAVY		MAIN ROUTE	'DIVER TED'			WITHOUT WORK ZONE	WITH WORK ZONE	
MID-1 AM	776	0.0	3000	776	0	0.35	0	69.7	58.3	49.7
1-2 AM	613	0.0	3000	613	0	0.36	0	70.0	58.4	49.7
2-3 AM	583	0.0	3000	583	0	0.36	0	70.0	58.4	49.7
3-4 AM	662	0.0	3000	662	0	0.36	0	69.9	58.4	49.7
4-5 AM	1231	0.0	3000	1231	0	0.35	0	69.2	58.1	49.7
5-6 AM	3178	0.0	OFF	3178	0	0.00	0	66.8	66.8	66.8
6-7 AM	5326	0.0	OFF	5326	0	0.00	0	54.5	54.5	54.5
7-8 AM	6196	0.0	OFF	6196	0	0.00	0	48.5	48.5	48.5
8-9 AM	5445	0.0	OFF	5445	0	0.00	0	53.7	53.7	53.7
9-10 AM	4235	0.0	OFF	4235	0	0.00	0	61.9	61.9	61.9
10-11 AM	3977	0.0	OFF	3977	0	0.00	0	63.7	63.7	63.7
11AM-NOON	4182	0.0	OFF	4182	0	0.00	0	62.3	62.3	62.3
NOON-1PM	4369	0.0	OFF	4369	0	0.00	0	61.0	61.0	61.0
1-2 PM	4404	0.0	OFF	4404	0	0.00	0	60.8	60.8	60.8
2-3 PM	5230	0.0	OFF	5230	0	0.00	0	55.1	55.1	55.1
3-4 PM	5952	0.0	OFF	5952	0	0.00	0	50.2	50.2	50.2
4-5 PM	6393	0.0	OFF	6393	0	0.00	0	47.2	47.2	47.2
5-6 PM	6190	0.0	OFF	6190	0	0.00	0	48.6	48.6	48.6
6-7 PM	4592	0.0	OFF	4592	0	0.00	0	59.5	59.5	59.5
7-8 PM	3163	0.0	2999	3163	0	3.17	140	66.8	24.9	37.3
8-9 PM	2699	0.0	2999	2699	0	1.31	57	67.4	39.6	41.1
9-10 PM	2546	0.0	3000	2546	0	0.43	0	67.6	54.8	45.7
10-11 PM	1955	0.0	3000	1955	0	0.34	0	68.3	57.8	49.7
11PM-MID	1335	0.0	3000	1335	0	0.35	0	69.1	58.1	49.7

"OFF" INDICATES NO ROAD WORK (ALL LANES OPEN TO TRAFFIC)

----- SITE BREAKDOWN DELAYS -----	
BREAKDOWN DURATION (MINS)	0
RANGE OF QUEUE DELAY - MIN (VEH-H) MAX	0.0
AV BREAKDOWNS PER DAY	0.00
AV QUEUE DELAY/DAY (VEH-H)	0.0
AV TOTAL DELAY/DAY (VEH-H)	0.0

----- SITE ACCIDENT DELAYS -----	
BREAKDOWN DURATION (MINS)	0
RANGE OF QUEUE DELAY - MIN (VEH-H) MAX	0
AV BREAKDOWNS PER DAY	0
AV QUEUE DELAY/DAY (VEH-H)	0
AV TOTAL DELAY/DAY (VEH-H)	0

AVERAGE ACCIDENT NUMBERS (PIA/DAY)	
MAIN ROUTE WITHOUT WORKS	0.0285
MAIN ROUTE WITH WORKS	0.0275
'DIVERSION'	0.0000

PIA: Personal Injury Accidents

ECONOMIC IMPACT ON ROAD USERS	
ROAD USER COSTS PER DAY	\$3,844
CONGESTED HOURS PER DAY*	0

*Delays Exceeding User-Specified Maximum

**USH 45: STH 190 TO NORTH AVE (MILWAUKEE COUNTY)
NIGHTTIME CLOSURE
NO DIVERSION ROUTE (MAX QUEUE METHOD)**

OCTOBER

Analyzed for 2009
Construction Season

**GRAPHICAL REPRESENTATION OF TRAFFIC MODEL INPUT AND OUTPUT
MON-THUR NORTHBOUND DIRECTION**

