

USH 45: STH 190 TO NORTH AVE (MILWAUKEE COUNTY) NIGHTTIME CLOSURE NO DIVERSION ROUTE (MAX QUEUE METHOD)	AUGUST
	Analyzed for 2009 Construction Season

SUMMARY OF TRAFFIC MODEL OUTPUT

MON-THUR SOUTHBOUND DIRECTION

TIME OF DAY	FLOWS AND CAPACITY IN VEH/HR						AVERAGE SPEEDS IN MPH			
	MAIN ROUTE		SITE CAPA CITY	FLOW		AV.DEL PER VEH (MINS)	AVERAGE QUEUE (VEH)	MAIN ROUTE		SITE
	DEMAND FLOW	PCT HEAVY		MAIN ROUTE	'DIVER TED'			WITHOUT WORK ZONE	WITH WORK ZONE	
MID-1 AM	619	0.0	3000	619	0	0.36	0	70.0	58.4	49.7
1-2 AM	423	0.0	3000	423	0	0.36	0	70.2	58.5	49.7
2-3 AM	388	0.0	3000	388	0	0.36	0	70.2	58.5	49.7
3-4 AM	471	0.0	3000	471	0	0.36	0	70.2	58.4	49.7
4-5 AM	853	0.0	3000	853	0	0.35	0	69.7	58.3	49.7
5-6 AM	2452	0.0	OFF	2452	0	0.00	0	67.7	67.7	67.7
6-7 AM	5092	0.0	OFF	5092	0	0.00	0	56.1	56.1	56.1
7-8 AM	6055	0.0	OFF	6055	0	0.00	0	49.5	49.5	49.5
8-9 AM	5431	0.0	OFF	5431	0	0.00	0	53.8	53.8	53.8
9-10 AM	4648	0.0	OFF	4648	0	0.00	0	59.1	59.1	59.1
10-11 AM	4368	0.0	OFF	4368	0	0.00	0	61.0	61.0	61.0
11AM-NOON	4688	0.0	OFF	4688	0	0.00	0	58.8	58.8	58.8
NOON-1PM	4570	0.0	OFF	4570	0	0.00	0	59.6	59.6	59.6
1-2 PM	4644	0.0	OFF	4644	0	0.00	0	59.1	59.1	59.1
2-3 PM	5178	0.0	OFF	5178	0	0.00	0	55.5	55.5	55.5
3-4 PM	4504	0.0	OFF	4504	0	0.00	0	60.1	60.1	60.1
4-5 PM	4189	0.0	OFF	4189	0	0.00	0	62.2	62.2	62.2
5-6 PM	4021	0.0	OFF	4021	0	0.00	0	63.4	63.4	63.4
6-7 PM	4255	0.0	OFF	4255	0	0.00	0	61.8	61.8	61.8
7-8 PM	3073	0.0	2999	3073	0	2.32	89	66.9	29.9	37.3
8-9 PM	2558	0.0	3000	2558	0	0.56	8	67.6	52.0	45.3
9-10 PM	2120	0.0	3000	2120	0	0.33	0	68.1	57.7	49.7
10-11 PM	1652	0.0	3000	1652	0	0.34	0	68.7	57.9	49.7
11PM-MID	1281	0.0	3000	1281	0	0.35	0	69.1	58.1	49.7

"OFF" INDICATES NO ROAD WORK (ALL LANES OPEN TO TRAFFIC)

----- SITE BREAKDOWN DELAYS -----	
BREAKDOWN DURATION (MINS)	0
RANGE OF QUEUE DELAY - MIN (VEH-H) MAX	0.0
AV BREAKDOWNS PER DAY	0.00
AV QUEUE DELAY/DAY (VEH-H)	0.0
AV TOTAL DELAY/DAY (VEH-H)	0.0

----- SITE ACCIDENT DELAYS -----	
BREAKDOWN DURATION (MINS)	0
RANGE OF QUEUE DELAY - MIN (VEH-H) MAX	0
AV BREAKDOWNS PER DAY	0
AV QUEUE DELAY/DAY (VEH-H)	0
AV TOTAL DELAY/DAY (VEH-H)	0

AVERAGE ACCIDENT NUMBERS (PIA/DAY)	
MAIN ROUTE WITHOUT WORKS	0.0259
MAIN ROUTE WITH WORKS	0.0250
'DIVERSION'	0.0000
<small>PIA: Personal Injury Accidents</small>	
IMPACTS ON ROAD USERS	
ROAD USER COSTS PER DAY	\$2,611
CONGESTED HOURS PER DAY*	0

*Delays Exceeding User-Specified Maximum

**USH 45: STH 190 TO NORTH AVE (MILWAUKEE COUNTY)
NIGHTTIME CLOSURE
NO DIVERSION ROUTE (MAX QUEUE METHOD)**

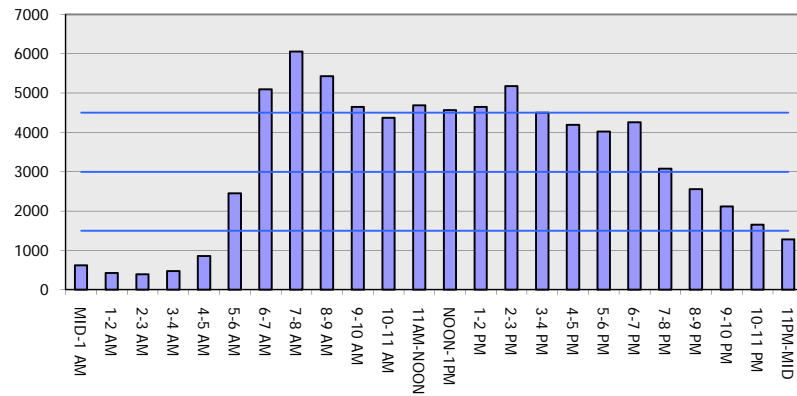
AUGUST

Analyzed for 2009
Construction Season

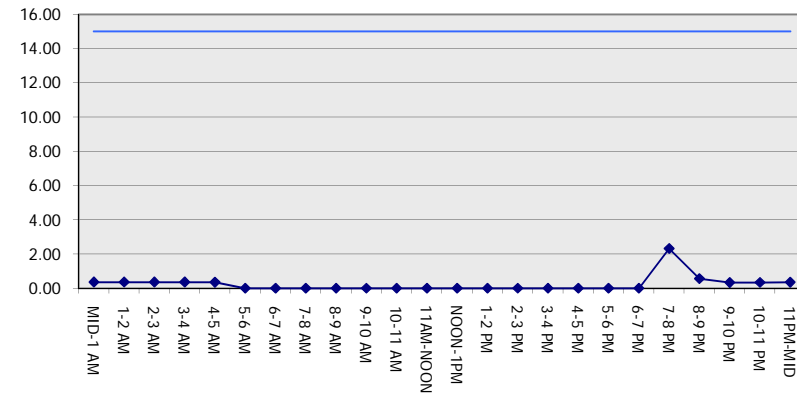
GRAPHICAL REPRESENTATION OF TRAFFIC MODEL INPUT AND OUTPUT

MON-THUR SOUTHBOUND DIRECTION

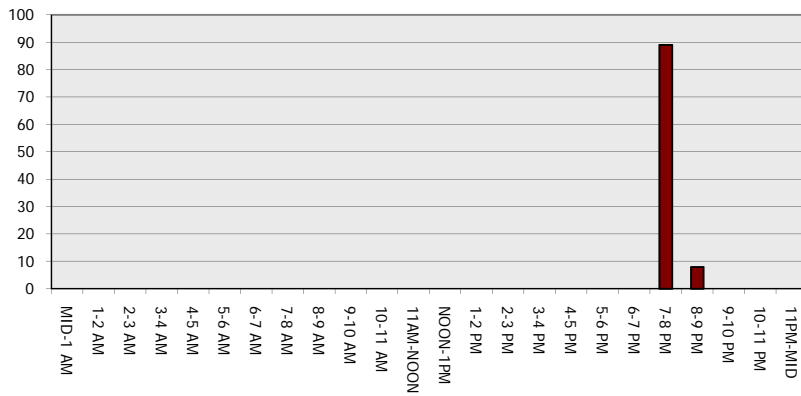
Main Route - Traffic Demand (Vehicles Per Hour)



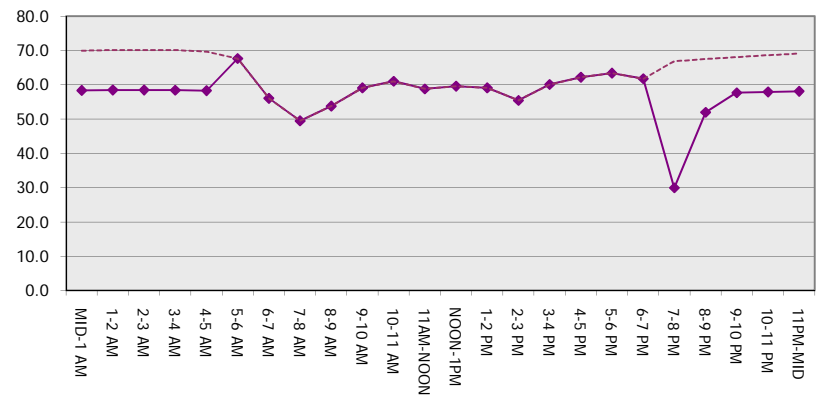
Main Route Average Delay Per Vehicle (Minutes)



Main Route - Average Queue Length (Vehicles)



Main Route - Average Speed (MPH)



USH 45: STH 190 TO NORTH AVE (MILWAUKEE COUNTY) NIGHTTIME CLOSURE NO DIVERSION ROUTE (MAX QUEUE METHOD)	AUGUST
	Analyzed for 2009 Construction Season

SUMMARY OF TRAFFIC MODEL OUTPUT

MON-THUR NORTHBOUND DIRECTION

TIME OF DAY	FLOWS AND CAPACITY IN VEH/HR							AVERAGE SPEEDS IN MPH		
	MAIN ROUTE		SITE CAPA CITY	FLOW		AV.DEL PER VEH (MINS)	AVERAGE QUEUE (VEH)	MAIN ROUTE		SITE
	DEMAND FLOW	PCT HEAVY		MAIN ROUTE	'DIVER TED'			WITHOUT WORK ZONE	WITH WORK ZONE	
MID-1 AM	966	0.0	3000	966	0	0.35	0	69.6	58.2	49.7
1-2 AM	667	0.0	3000	667	0	0.36	0	69.9	58.4	49.7
2-3 AM	644	0.0	3000	644	0	0.36	0	69.9	58.4	49.7
3-4 AM	697	0.0	3000	697	0	0.36	0	69.9	58.4	49.7
4-5 AM	1290	0.0	3000	1290	0	0.35	0	69.1	58.1	49.7
5-6 AM	3256	0.0	OFF	3256	0	0.00	0	66.7	66.7	66.7
6-7 AM	5373	0.0	OFF	5373	0	0.00	0	54.2	54.2	54.2
7-8 AM	6326	0.0	OFF	6326	0	0.00	0	47.6	47.6	47.6
8-9 AM	5307	0.0	OFF	5307	0	0.00	0	54.6	54.6	54.6
9-10 AM	4215	0.0	OFF	4215	0	0.00	0	62.0	62.0	62.0
10-11 AM	4128	0.0	OFF	4128	0	0.00	0	62.7	62.7	62.7
11AM-NOON	4440	0.0	OFF	4440	0	0.00	0	60.5	60.5	60.5
NOON-1PM	4468	0.0	OFF	4468	0	0.00	0	60.4	60.4	60.4
1-2 PM	4996	0.0	OFF	4996	0	0.00	0	56.7	56.7	56.7
2-3 PM	5629	0.0	OFF	5629	0	0.00	0	52.4	52.4	52.4
3-4 PM	5583	0.0	OFF	5583	0	0.00	0	52.7	52.7	52.7
4-5 PM	6398	0.0	OFF	6398	0	0.00	0	47.1	47.1	47.1
5-6 PM	6274	0.0	OFF	6274	0	0.00	0	48.0	48.0	48.0
6-7 PM	4596	0.0	OFF	4596	0	0.00	0	59.4	59.4	59.4
7-8 PM	3390	0.0	2999	3390	0	4.74	244	66.5	19.5	37.3
8-9 PM	3006	0.0	2999	3006	0	8.05	403	67.0	14.1	37.3
9-10 PM	3071	0.0	3000	3071	0	8.67	438	66.9	13.6	37.3
10-11 PM	2801	0.0	2999	2801	0	8.14	412	67.3	14.0	37.3
11PM-MID	1653	0.0	3000	1653	0	0.64	32	68.7	51.0	49.7

"OFF" INDICATES NO ROAD WORK (ALL LANES OPEN TO TRAFFIC)

----- SITE BREAKDOWN DELAYS -----	
BREAKDOWN DURATION (MINS)	0
RANGE OF QUEUE DELAY - MIN (VEH-H) MAX	0.0
AV BREAKDOWNS PER DAY	0.00
AV QUEUE DELAY/DAY (VEH-H)	0.0
AV TOTAL DELAY/DAY (VEH-H)	0.0

----- SITE ACCIDENT DELAYS -----	
BREAKDOWN DURATION (MINS)	0
RANGE OF QUEUE DELAY - MIN (VEH-H) MAX	0
AV BREAKDOWNS PER DAY	0
AV QUEUE DELAY/DAY (VEH-H)	0
AV TOTAL DELAY/DAY (VEH-H)	0

AVERAGE ACCIDENT NUMBERS (PIA/DAY)	
MAIN ROUTE WITHOUT WORKS	0.0298
MAIN ROUTE WITH WORKS	0.0286
'DIVERSION'	0.0000

PIA: Personal Injury Accidents

ECONOMIC IMPACT ON ROAD USERS	
ROAD USER COSTS PER DAY	\$21,402
CONGESTED HOURS PER DAY*	0

*Delays Exceeding User-Specified Maximum

**USH 45: STH 190 TO NORTH AVE (MILWAUKEE COUNTY)
NIGHTTIME CLOSURE
NO DIVERSION ROUTE (MAX QUEUE METHOD)**

AUGUST
Analyzed for 2009
Construction Season

GRAPHICAL REPRESENTATION OF TRAFFIC MODEL INPUT AND OUTPUT
MON-THUR NORTHBOUND DIRECTION

