

USH 45: STH 190 TO NORTH AVE (MILWAUKEE COUNTY) NIGHTTIME 2 LANE CLOSURE NO DIVERSION ROUTE (MAX QUEUE METHOD)	AUGUST
	Analyzed for 2009 Construction Season

SUMMARY OF TRAFFIC MODEL OUTPUT

FRIDAY SOUTHBOUND DIRECTION

TIME OF DAY	FLOWS AND CAPACITY IN VEH/HR						AVERAGE SPEEDS IN MPH				
	MAIN ROUTE		SITE CAPA CITY	FLOW		AV.DEL PER VEH (MINS)	AVERAGE QUEUE (VEH)	MAIN ROUTE		SITE	
	DEMAND FLOW	PCT HEAVY		MAIN ROUTE	'DIVER TED'			WITHOUT WORK ZONE	WITH WORK ZONE		
MID-1 AM	481	0.0	2000	481	0	0.59	3	70.1	52.8	43.6	
1-2 AM	324	0.0	2000	324	0	0.51	0	70.2	54.6	44.2	
2-3 AM	301	0.0	2000	301	0	0.51	0	70.2	54.6	44.3	
3-4 AM	336	0.0	2000	336	0	0.51	0	70.2	54.6	44.2	
4-5 AM	813	0.0	2000	813	0	0.57	0	69.7	53.1	42.4	
5-6 AM	2265	0.0	OFF	2265	0	0.00	0	67.9	67.9	67.9	
6-7 AM	4721	0.0	OFF	4721	0	0.00	0	58.6	58.6	58.6	
7-8 AM	5771	0.0	OFF	5771	0	0.00	0	51.4	51.4	51.4	
8-9 AM	5316	0.0	OFF	5316	0	0.00	0	54.5	54.5	54.5	
9-10 AM	4655	0.0	OFF	4655	0	0.00	0	59.1	59.1	59.1	
10-11 AM	4691	0.0	OFF	4691	0	0.00	0	58.8	58.8	58.8	
11AM-NOON	4882	0.0	OFF	4882	0	0.00	0	57.5	57.5	57.5	
NOON-1PM	4969	0.0	OFF	4969	0	0.00	0	56.9	56.9	56.9	
1-2 PM	5002	0.0	OFF	5002	0	0.00	0	56.7	56.7	56.7	
2-3 PM	5338	0.0	OFF	5338	0	0.00	0	54.4	54.4	54.4	
3-4 PM	4390	0.0	OFF	4390	0	0.00	0	60.9	60.9	60.9	
4-5 PM	3607	0.0	OFF	3607	0	0.00	0	66.2	66.2	66.2	
5-6 PM	3916	0.0	OFF	3916	0	0.00	0	64.1	64.1	64.1	
6-7 PM	4425	0.0	OFF	4425	0	0.00	0	60.6	60.6	60.6	
7-8 PM	3414	0.0	1999	2448	966	14.52+	478	66.5	9.1	27.9	
8-9 PM	2622	0.0	1999	2067	555	16.93+	556	67.5	8.4	27.9	
9-10 PM	2324	0.0	2000	2026	298	17.02+	558	67.9	8.4	27.9	
10-11 PM	1978	0.0	2000	1964	14	16.62+	544	68.2	8.5	27.9	
11PM-MID	1588	0.0	1999	1588	0	10.27	345	68.7	11.3	27.9	

"OFF" INDICATES NO ROAD WORK (ALL LANES OPEN TO TRAFFIC)

+ INDICATES QUEUEING EXCEEDS USER-SPECIFIED MAXIMUM LIMIT

----- SITE BREAKDOWN DELAYS -----	
BREAKDOWN DURATION (MINS)	0
RANGE OF QUEUE DELAY - MIN (VEH-H) MAX	0.0
AV BREAKDOWNS PER DAY	0.00
AV QUEUE DELAY/DAY (VEH-H)	0.0
AV TOTAL DELAY/DAY (VEH-H)	0.0

----- SITE ACCIDENT DELAYS -----	
BREAKDOWN DURATION (MINS)	0
RANGE OF QUEUE DELAY - MIN (VEH-H) MAX	0
AV BREAKDOWNS PER DAY	0
AV QUEUE DELAY/DAY (VEH-H)	0
AV TOTAL DELAY/DAY (VEH-H)	0

AVERAGE ACCIDENT NUMBERS (PIA/DAY)	
MAIN ROUTE WITHOUT WORKS	0.0261
MAIN ROUTE WITH WORKS	0.0247
'DIVERSION'	0.0014
PIA: Personal Injury Accidents	
IMPACTS ON ROAD USERS	
ROAD USER COSTS PER DAY	\$43,344
CONGESTED HOURS PER DAY*	4

*Delays Exceeding User-Specified Maximum

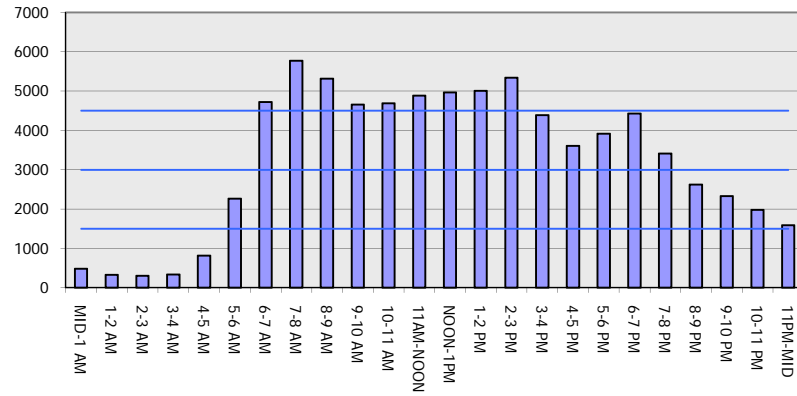
**USH 45: STH 190 TO NORTH AVE (MILWAUKEE COUNTY)
NIGHTTIME 2 LANE CLOSURE
NO DIVERSION ROUTE (MAX QUEUE METHOD)**

AUGUST

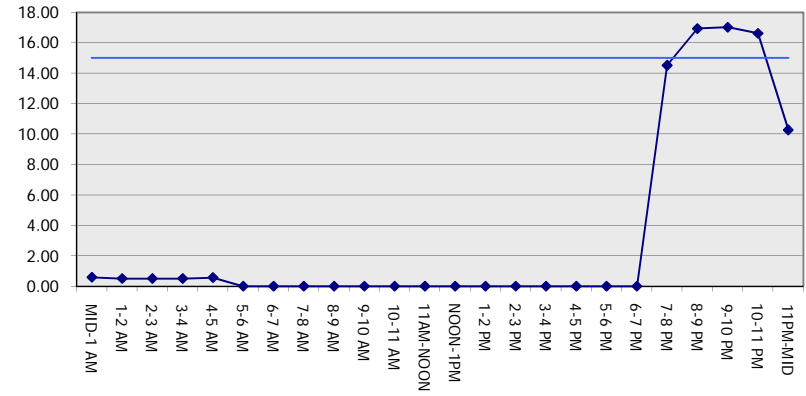
Analyzed for 2009
Construction Season

GRAPHICAL REPRESENTATION OF TRAFFIC MODEL INPUT AND OUTPUT
FRIDAY SOUTHBOUND DIRECTION

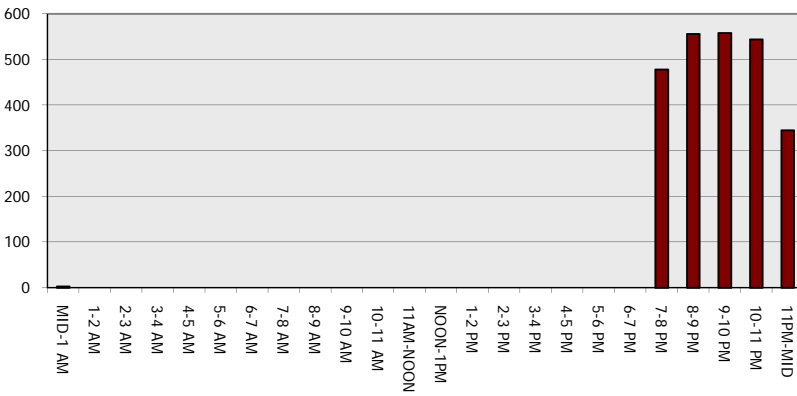
Main Route - Traffic Demand (Vehicles Per Hour)



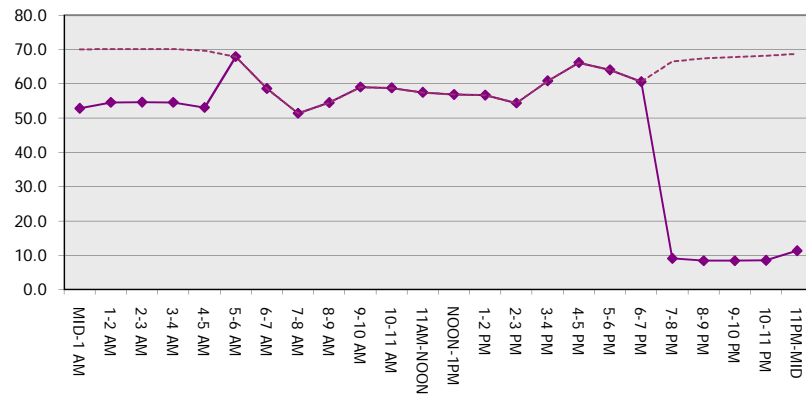
Main Route Average Delay Per Vehicle (Minutes)



Main Route - Average Queue Length (Vehicles)



Main Route - Average Speed (MPH)



USH 45: STH 190 TO NORTH AVE (MILWAUKEE COUNTY) NIGHTTIME 2 LANE CLOSURE NO DIVERSION ROUTE (MAX QUEUE METHOD)	AUGUST
	Analyzed for 2009 Construction Season

SUMMARY OF TRAFFIC MODEL OUTPUT

FRIDAY NORTHBOUND DIRECTION

TIME OF DAY	FLOWS AND CAPACITY IN VEH/HR						AVERAGE SPEEDS IN MPH			
	MAIN ROUTE		SITE CAPA CITY	FLOW		AV.DEL PER VEH (MINS)	AVERAGE QUEUE (VEH)	MAIN ROUTE		SITE
	DEMAND FLOW	PCT HEAVY		MAIN ROUTE	'DIVER TED'			WITHOUT WORK ZONE	WITH WORK ZONE	
MID-1 AM	772	0.0	2000	772	0	1.76	116	69.8	35.8	39.2
1-2 AM	554	0.0	2000	554	0	0.54	0	70.0	53.9	43.3
2-3 AM	491	0.0	2000	491	0	0.53	0	70.1	54.1	43.5
3-4 AM	475	0.0	2000	475	0	0.53	0	70.1	54.2	43.6
4-5 AM	1263	0.0	1999	1263	0	0.86	0	69.2	46.9	35.5
5-6 AM	3133	0.0	OFF	3133	0	0.00	0	66.8	66.8	66.8
6-7 AM	5280	0.0	OFF	5280	0	0.00	0	54.8	54.8	54.8
7-8 AM	6227	0.0	OFF	6227	0	0.00	0	48.3	48.3	48.3
8-9 AM	5211	0.0	OFF	5211	0	0.00	0	55.3	55.3	55.3
9-10 AM	4385	0.0	OFF	4385	0	0.00	0	60.9	60.9	60.9
10-11 AM	4516	0.0	OFF	4516	0	0.00	0	60.0	60.0	60.0
11AM-NOON	4834	0.0	OFF	4834	0	0.00	0	57.8	57.8	57.8
NOON-1PM	4993	0.0	OFF	4993	0	0.00	0	56.8	56.8	56.8
1-2 PM	5305	0.0	OFF	5305	0	0.00	0	54.6	54.6	54.6
2-3 PM	6008	0.0	OFF	6008	0	0.00	0	49.8	49.8	49.8
3-4 PM	6248	0.0	OFF	6248	0	0.00	0	48.2	48.2	48.2
4-5 PM	6497	0.0	OFF	6497	0	0.00	0	46.5	46.5	46.5
5-6 PM	5747	0.0	OFF	5747	0	0.00	0	51.6	51.6	51.6
6-7 PM	4931	0.0	OFF	4931	0	0.00	0	57.2	57.2	57.2
7-8 PM	3593	0.0	1999	2313	1280	15.14+	504	66.3	8.9	29.6
8-9 PM	3127	0.0	1999	2292	835	16.39+	541	66.8	8.6	27.9
9-10 PM	3098	0.0	1999	1976	1122	17.20+	566	66.9	8.3	27.9
10-11 PM	2921	0.0	1999	1995	927	17.13+	563	67.1	8.3	27.9
11PM-MID	2099	0.0	1999	1914	185	16.70+	547	68.1	8.4	27.9

"OFF" INDICATES NO ROAD WORK (ALL LANES OPEN TO TRAFFIC)

+ INDICATES QUEUEING EXCEEDS USER-SPECIFIED MAXIMUM LIMIT

----- SITE BREAKDOWN DELAYS -----	
BREAKDOWN DURATION (MINS)	0
RANGE OF QUEUE DELAY - MIN (VEH-H) MAX	0.0
AV BREAKDOWNS PER DAY	0.00
AV QUEUE DELAY/DAY (VEH-H)	0.0
AV TOTAL DELAY/DAY (VEH-H)	0.0

----- SITE ACCIDENT DELAYS -----	
BREAKDOWN DURATION (MINS)	0
RANGE OF QUEUE DELAY - MIN (VEH-H) MAX	0
AV BREAKDOWNS PER DAY	0
AV QUEUE DELAY/DAY (VEH-H)	0
AV TOTAL DELAY/DAY (VEH-H)	0

AVERAGE ACCIDENT NUMBERS (PIA/DAY)	
MAIN ROUTE WITHOUT WORKS	0.0307
MAIN ROUTE WITH WORKS	0.0283
'DIVERSION'	0.0034

PIA: Personal Injury Accidents

ECONOMIC IMPACT ON ROAD USERS	
ROAD USER COSTS PER DAY	\$58,271
CONGESTED HOURS PER DAY*	5

*Delays Exceeding User-Specified Maximum

**USH 45: STH 190 TO NORTH AVE (MILWAUKEE COUNTY)
NIGHTTIME 2 LANE CLOSURE
NO DIVERSION ROUTE (MAX QUEUE METHOD)**

AUGUST
Analyzed for 2009
Construction Season

GRAPHICAL REPRESENTATION OF TRAFFIC MODEL INPUT AND OUTPUT
FRIDAY NORTHBOUND DIRECTION

