

IH 43: STH 100/BROWN DEER RD TO SILVER SPRING DR (MILWAUKEE COUNTY) NIGHTTIME CLOSURE NO DIVERSION ROUTE (MAX QUEUE METHOD)	OCTOBER
	Analyzed for 2009 Construction Season

SUMMARY OF TRAFFIC MODEL OUTPUT

MON-THUR SOUTHBOUND DIRECTION

TIME OF DAY	FLOWS AND CAPACITY IN VEH/HR						AVERAGE SPEEDS IN MPH			
	MAIN ROUTE		SITE CAPA CITY	FLOW		AV.DEL PER VEH (MINS)	AVERAGE QUEUE (VEH)	MAIN ROUTE		SITE
	DEMAND FLOW	PCT HEAVY		MAIN ROUTE	'DIVER TED'			WITHOUT WORK ZONE	WITH WORK ZONE	
MID-1 AM	294	0.0	1500	294	0	0.45	0	65.8	57.3	44.3
1-2 AM	231	0.0	1500	231	0	0.44	0	66.0	57.4	44.6
2-3 AM	148	0.0	1500	148	0	0.44	0	66.1	57.7	44.9
3-4 AM	168	0.0	1500	168	0	0.44	0	66.1	57.6	44.8
4-5 AM	391	0.0	1500	391	0	0.46	0	65.6	56.9	43.9
5-6 AM	1255	0.0	OFF	1255	0	0.00	0	64.0	64.0	64.0
6-7 AM	3021	0.0	OFF	3021	0	0.00	0	55.6	55.6	55.6
7-8 AM	4149	0.0	OFF	4149	0	0.00	0	44.0	44.0	44.0
8-9 AM	3569	0.0	OFF	3569	0	0.00	0	49.9	49.9	49.9
9-10 AM	2585	0.0	OFF	2585	0	0.00	0	60.1	60.1	60.1
10-11 AM	2306	0.0	OFF	2306	0	0.00	0	62.1	62.1	62.1
11AM-NOON	2427	0.0	OFF	2427	0	0.00	0	61.7	61.7	61.7
NOON-1PM	2488	0.0	OFF	2488	0	0.00	0	61.0	61.0	61.0
1-2 PM	2429	0.0	OFF	2429	0	0.00	0	61.6	61.6	61.6
2-3 PM	2685	0.0	OFF	2685	0	0.00	0	59.0	59.0	59.0
3-4 PM	2999	0.0	OFF	2999	0	0.00	0	55.8	55.8	55.8
4-5 PM	2933	0.0	OFF	2933	0	0.00	0	56.4	56.4	56.4
5-6 PM	3220	0.0	OFF	3220	0	0.00	0	53.5	53.5	53.5
6-7 PM	2411	0.0	OFF	2411	0	0.00	0	61.8	61.8	61.8
7-8 PM	1602	0.0	1499	1602	0	4.15	87	63.4	27.2	30.8
8-9 PM	1230	0.0	1499	1230	0	1.43	26	64.1	43.8	36.5
9-10 PM	1009	0.0	1500	1009	0	0.52	0	64.5	55.1	41.7
10-11 PM	720	0.0	1500	720	0	0.49	0	65.0	56.0	42.7
11PM-MID	453	0.0	1500	453	0	0.47	0	65.5	56.8	43.7

"OFF" INDICATES NO ROAD WORK (ALL LANES OPEN TO TRAFFIC)

----- SITE BREAKDOWN DELAYS -----	
BREAKDOWN DURATION (MINS)	0
RANGE OF QUEUE DELAY - MIN (VEH-H) MAX	0.0
AV BREAKDOWNS PER DAY	0.00
AV QUEUE DELAY/DAY (VEH-H)	0.0
AV TOTAL DELAY/DAY (VEH-H)	0.0

----- SITE ACCIDENT DELAYS -----	
BREAKDOWN DURATION (MINS)	0
RANGE OF QUEUE DELAY - MIN (VEH-H) MAX	0
AV BREAKDOWNS PER DAY	0
AV QUEUE DELAY/DAY (VEH-H)	0
AV TOTAL DELAY/DAY (VEH-H)	0

AVERAGE ACCIDENT NUMBERS (PIA/DAY)	
MAIN ROUTE WITHOUT WORKS	0.0235
MAIN ROUTE WITH WORKS	0.0231
'DIVERSION'	0.0000
<small>PIA: Personal Injury Accidents</small>	
IMPACTS ON ROAD USERS	
ROAD USER COSTS PER DAY	\$2,371
CONGESTED HOURS PER DAY*	0

*Delays Exceeding User-Specified Maximum

IH 43: STH 100/BROWN DEER RD TO SILVER SPRING DR (MILWAUKEE COUNTY)
NIGHTTIME CLOSURE
NO DIVERSION ROUTE (MAX QUEUE METHOD)

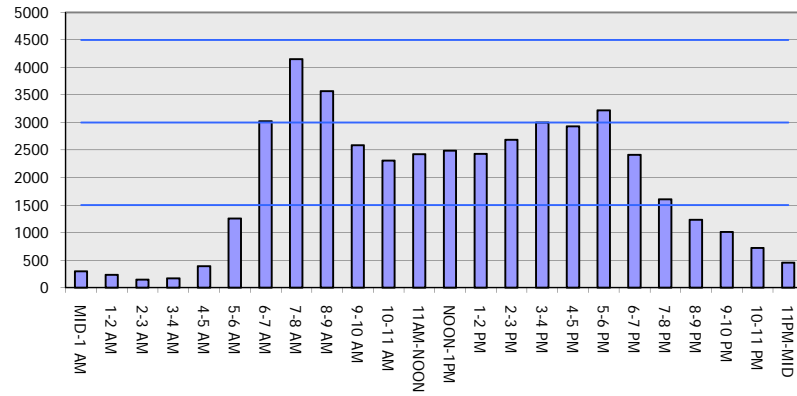
OCTOBER

Analyzed for 2009
 Construction Season

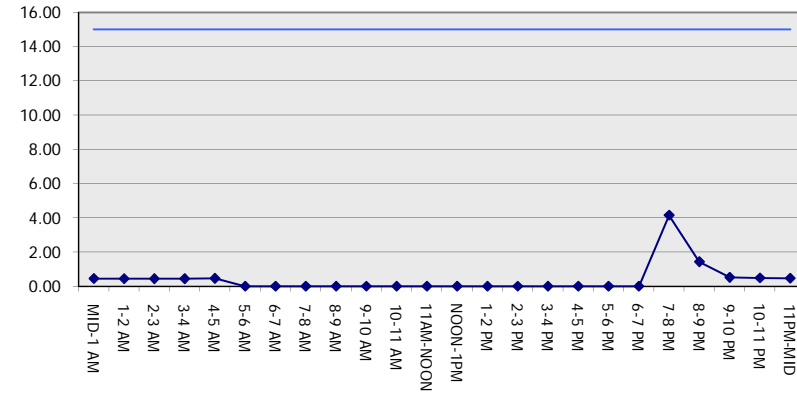
GRAPHICAL REPRESENTATION OF TRAFFIC MODEL INPUT AND OUTPUT

MON-THUR SOUTHBOUND DIRECTION

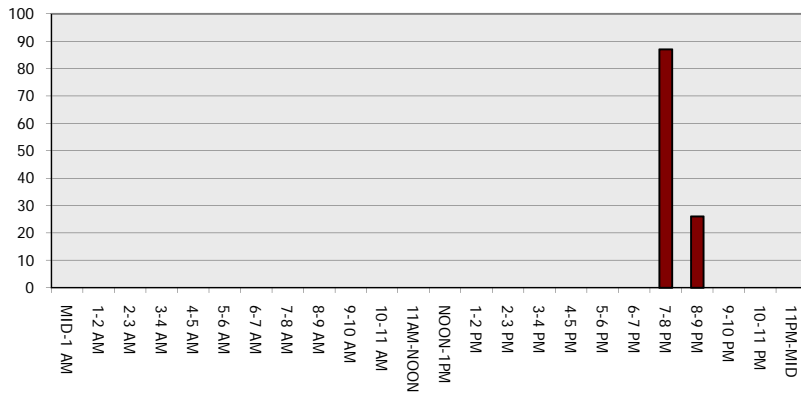
Main Route - Traffic Demand (Vehicles Per Hour)



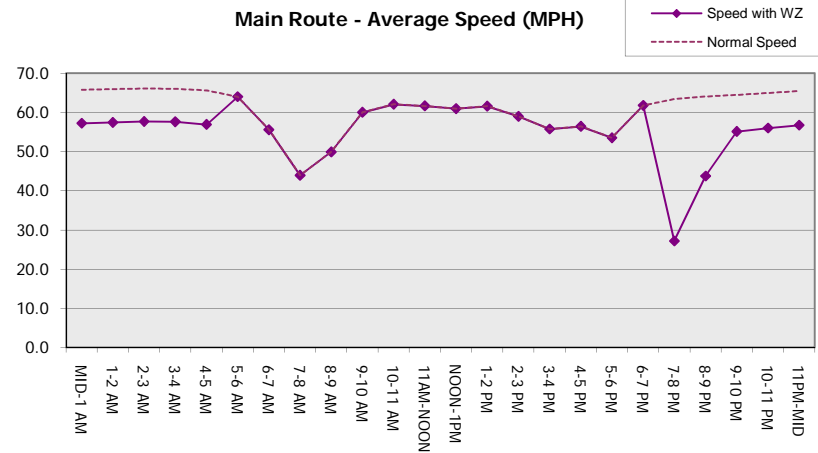
Main Route Average Delay Per Vehicle (Minutes)



Main Route - Average Queue Length (Vehicles)



Main Route - Average Speed (MPH)



IH 43: STH 100/BROWN DEER RD TO SILVER SPRING DR (MILWAUKEE COUNTY) NIGHTTIME CLOSURE NO DIVERSION ROUTE (MAX QUEUE METHOD)	OCTOBER
	Analyzed for 2009 Construction Season

SUMMARY OF TRAFFIC MODEL OUTPUT

MON-THUR NORTHBOUND DIRECTION

TIME OF DAY	FLOWS AND CAPACITY IN VEH/HR						AVERAGE SPEEDS IN MPH			
	MAIN ROUTE		SITE CAPA CITY	FLOW		AV.DEL PER VEH (MINS)	AVERAGE QUEUE (VEH)	MAIN ROUTE		SITE
	DEMAND FLOW	PCT HEAVY		MAIN ROUTE	'DIVER TED'			WITHOUT WORK ZONE	WITH WORK ZONE	
MID-1 AM	294	0.0	1500	294	0	0.45	0	65.8	57.3	44.3
1-2 AM	173	0.0	1500	173	0	0.44	0	66.1	57.6	44.8
2-3 AM	156	0.0	1500	156	0	0.44	0	66.1	57.7	44.8
3-4 AM	164	0.0	1500	164	0	0.44	0	66.1	57.6	44.8
4-5 AM	275	0.0	1500	275	0	0.45	0	65.9	57.3	44.4
5-6 AM	784	0.0	OFF	784	0	0.00	0	64.9	64.9	64.9
6-7 AM	1773	0.0	OFF	1773	0	0.00	0	63.1	63.1	63.1
7-8 AM	2746	0.0	OFF	2746	0	0.00	0	58.4	58.4	58.4
8-9 AM	2683	0.0	OFF	2683	0	0.00	0	59.0	59.0	59.0
9-10 AM	2184	0.0	OFF	2184	0	0.00	0	62.3	62.3	62.3
10-11 AM	2087	0.0	OFF	2087	0	0.00	0	62.5	62.5	62.5
11AM-NOON	2271	0.0	OFF	2271	0	0.00	0	62.2	62.2	62.2
NOON-1PM	2403	0.0	OFF	2403	0	0.00	0	61.9	61.9	61.9
1-2 PM	2445	0.0	OFF	2445	0	0.00	0	61.5	61.5	61.5
2-3 PM	2900	0.0	OFF	2900	0	0.00	0	56.8	56.8	56.8
3-4 PM	3579	0.0	OFF	3579	0	0.00	0	49.8	49.8	49.8
4-5 PM	3874	0.0	OFF	3874	0	0.00	0	46.8	46.8	46.8
5-6 PM	4071	0.0	OFF	4071	0	0.00	0	44.8	44.8	44.8
6-7 PM	3027	0.0	OFF	3027	0	0.00	0	55.5	55.5	55.5
7-8 PM	2012	0.0	1499	1889	123	10.28+	281	62.7	14.8	30.8
8-9 PM	1679	0.0	1499	1502	176	15.97+	403	63.3	10.7	30.8
9-10 PM	1398	0.0	1500	1398	0	14.54+	366	63.8	11.3	30.8
10-11 PM	854	0.0	1499	854	0	2.03	77	64.8	38.9	40.7
11PM-MID	526	0.0	1500	526	0	0.47	0	65.4	56.6	43.4

"OFF" INDICATES NO ROAD WORK (ALL LANES OPEN TO TRAFFIC)

+ INDICATES QUEUEING EXCEEDS USER-SPECIFIED MAXIMUM LIMIT

----- SITE BREAKDOWN DELAYS -----	
BREAKDOWN DURATION (MINS)	0
RANGE OF QUEUE DELAY - MIN (VEH-H) MAX	0.0
AV BREAKDOWNS PER DAY	0.00
AV QUEUE DELAY/DAY (VEH-H)	0.0
AV TOTAL DELAY/DAY (VEH-H)	0.0

----- SITE ACCIDENT DELAYS -----	
BREAKDOWN DURATION (MINS)	0
RANGE OF QUEUE DELAY - MIN (VEH-H) MAX	0
AV BREAKDOWNS PER DAY	0
AV QUEUE DELAY/DAY (VEH-H)	0
AV TOTAL DELAY/DAY (VEH-H)	0

AVERAGE ACCIDENT NUMBERS (PIA/DAY)	
MAIN ROUTE WITHOUT WORKS	0.0233
MAIN ROUTE WITH WORKS	0.0227
'DIVERSION'	0.0004

PIA: Personal Injury Accidents

ECONOMIC IMPACT ON ROAD USERS	
ROAD USER COSTS PER DAY	\$16,577
CONGESTED HOURS PER DAY*	3

*Delays Exceeding User-Specified Maximum

IH 43: STH 100/BROWN DEER RD TO SILVER SPRING DR (MILWAUKEE COUNTY)
NIGHTTIME CLOSURE
NO DIVERSION ROUTE (MAX QUEUE METHOD)

OCTOBER

Analyzed for 2009
 Construction Season

GRAPHICAL REPRESENTATION OF TRAFFIC MODEL INPUT AND OUTPUT
MON-THUR NORTHBOUND DIRECTION

