

IH 43: STH 100/BROWN DEER RD TO SILVER SPRING DR (MILWAUKEE COUNTY) NIGHTTIME CLOSURE NO DIVERSION ROUTE (MAX QUEUE METHOD)	OCTOBER
	Analyzed for 2009 Construction Season

SUMMARY OF TRAFFIC MODEL OUTPUT

FRIDAY SOUTHBOUND DIRECTION

TIME OF DAY	FLOWS AND CAPACITY IN VEH/HR						AVERAGE SPEEDS IN MPH			
	MAIN ROUTE		SITE CAPA CITY	FLOW		AV.DEL PER VEH (MINS)	AVERAGE QUEUE (VEH)	MAIN ROUTE		SITE
	DEMAND FLOW	PCT HEAVY		MAIN ROUTE	'DIVER TED'			WITHOUT WORK ZONE	WITH WORK ZONE	
MID-1 AM	253	0.0	1500	253	0	0.45	0	65.9	57.4	44.5
1-2 AM	155	0.0	1500	155	0	0.44	0	66.1	57.7	44.8
2-3 AM	138	0.0	1500	138	0	0.44	0	66.1	57.7	45.0
3-4 AM	165	0.0	1500	165	0	0.44	0	66.1	57.6	44.8
4-5 AM	353	0.0	1500	353	0	0.46	0	65.7	57.1	44.1
5-6 AM	1139	0.0	OFF	1139	0	0.00	0	64.3	64.3	64.3
6-7 AM	2878	0.0	OFF	2878	0	0.00	0	57.0	57.0	57.0
7-8 AM	4177	0.0	OFF	4177	0	0.00	0	43.7	43.7	43.7
8-9 AM	3222	0.0	OFF	3222	0	0.00	0	53.5	53.5	53.5
9-10 AM	2467	0.0	OFF	2467	0	0.00	0	61.2	61.2	61.2
10-11 AM	2336	0.0	OFF	2336	0	0.00	0	62.0	62.0	62.0
11AM-NOON	2469	0.0	OFF	2469	0	0.00	0	61.2	61.2	61.2
NOON-1PM	2578	0.0	OFF	2578	0	0.00	0	60.1	60.1	60.1
1-2 PM	2561	0.0	OFF	2561	0	0.00	0	60.2	60.2	60.2
2-3 PM	2774	0.0	OFF	2774	0	0.00	0	58.1	58.1	58.1
3-4 PM	3139	0.0	OFF	3139	0	0.00	0	54.3	54.3	54.3
4-5 PM	3174	0.0	OFF	3174	0	0.00	0	54.0	54.0	54.0
5-6 PM	3392	0.0	OFF	3392	0	0.00	0	51.7	51.7	51.7
6-7 PM	2790	0.0	OFF	2790	0	0.00	0	57.9	57.9	57.9
7-8 PM	1974	0.0	1499	1916	58	9.99+	274	62.7	15.2	30.8
8-9 PM	1347	0.0	1499	1340	8	14.08+	356	63.9	11.7	30.8
9-10 PM	1244	0.0	1500	1244	0	5.22	137	64.1	23.8	32.7
10-11 PM	1044	0.0	1500	1044	0	0.52	0	64.5	55.1	41.5
11PM-MID	749	0.0	1500	749	0	0.50	0	65.0	55.9	42.6

"OFF" INDICATES NO ROAD WORK (ALL LANES OPEN TO TRAFFIC)

+ INDICATES QUEUEING EXCEEDS USER-SPECIFIED MAXIMUM LIMIT

----- SITE BREAKDOWN DELAYS -----	
BREAKDOWN DURATION (MINS)	0
RANGE OF QUEUE DELAY - MIN (VEH-H) MAX	0.0
AV BREAKDOWNS PER DAY	0.00
AV QUEUE DELAY/DAY (VEH-H)	0.0
AV TOTAL DELAY/DAY (VEH-H)	0.0

----- SITE ACCIDENT DELAYS -----	
BREAKDOWN DURATION (MINS)	0
RANGE OF QUEUE DELAY - MIN (VEH-H) MAX	0
AV BREAKDOWNS PER DAY	0
AV QUEUE DELAY/DAY (VEH-H)	0
AV TOTAL DELAY/DAY (VEH-H)	0

AVERAGE ACCIDENT NUMBERS (PIA/DAY)	
MAIN ROUTE WITHOUT WORKS	0.0244
MAIN ROUTE WITH WORKS	0.0239
'DIVERSION'	0.0001
<small>PIA: Personal Injury Accidents</small>	
IMPACTS ON ROAD USERS	
ROAD USER COSTS PER DAY	\$11,332
CONGESTED HOURS PER DAY*	2

*Delays Exceeding User-Specified Maximum

IH 43: STH 100/BROWN DEER RD TO SILVER SPRING DR (MILWAUKEE COUNTY)
NIGHTTIME CLOSURE
NO DIVERSION ROUTE (MAX QUEUE METHOD)

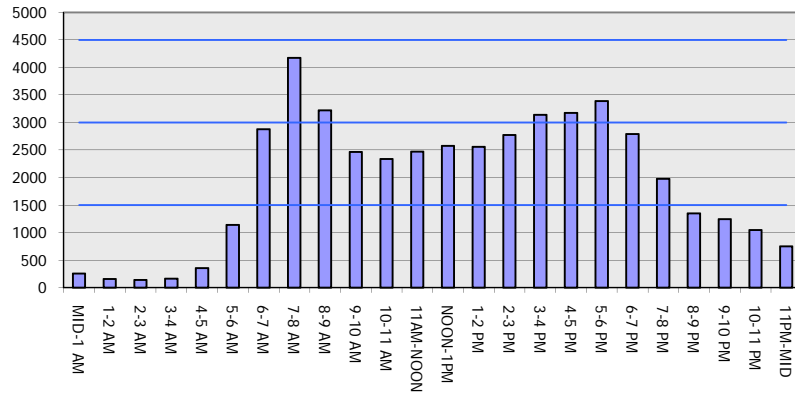
OCTOBER

Analyzed for 2009
 Construction Season

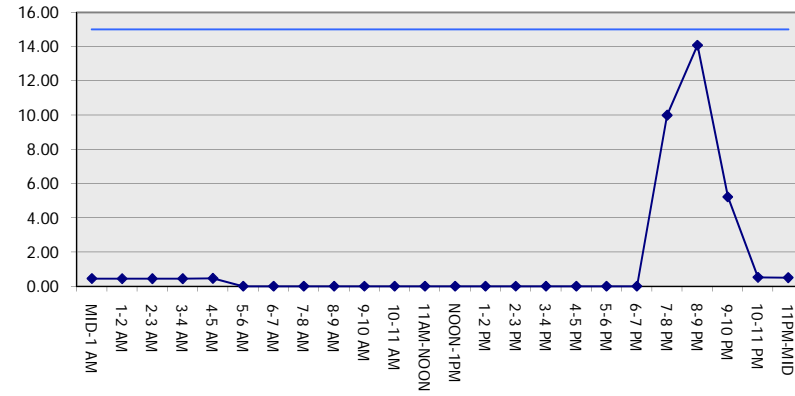
GRAPHICAL REPRESENTATION OF TRAFFIC MODEL INPUT AND OUTPUT

FRIDAY SOUTHBOUND DIRECTION

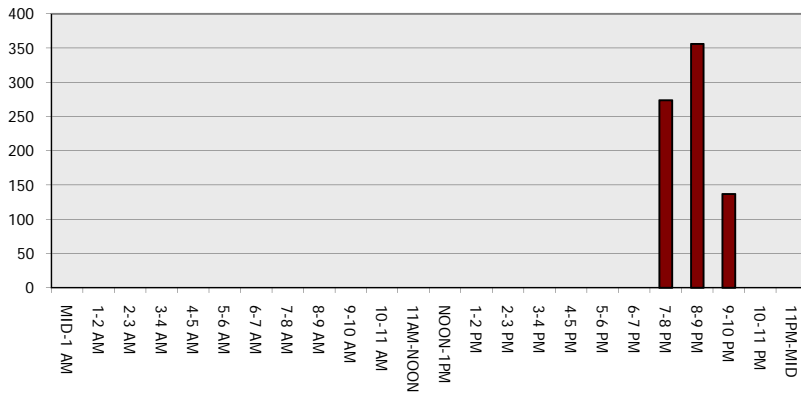
Main Route - Traffic Demand (Vehicles Per Hour)



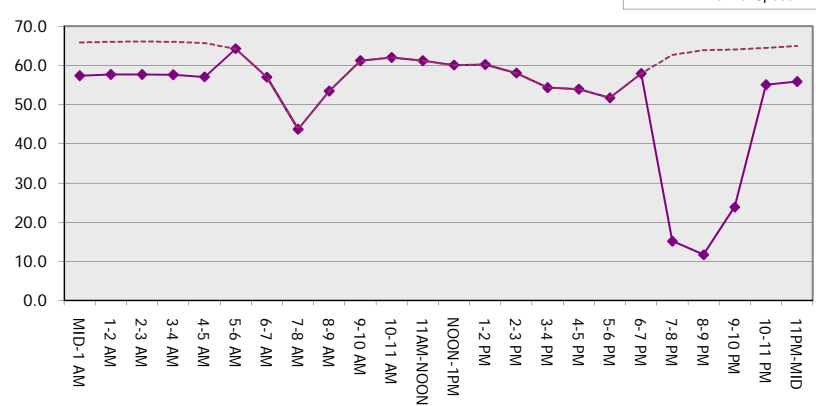
Main Route Average Delay Per Vehicle (Minutes)



Main Route - Average Queue Length (Vehicles)



Main Route - Average Speed (MPH)



IH 43: STH 100/BROWN DEER RD TO SILVER SPRING DR (MILWAUKEE COUNTY) NIGHTTIME CLOSURE NO DIVERSION ROUTE (MAX QUEUE METHOD)	OCTOBER
	Analyzed for 2009 Construction Season

SUMMARY OF TRAFFIC MODEL OUTPUT

FRIDAY NORTHBOUND DIRECTION

TIME OF DAY	FLOWS AND CAPACITY IN VEH/HR						AVERAGE SPEEDS IN MPH			
	MAIN ROUTE		SITE CAPA CITY	FLOW		AV.DEL PER VEH (MINS)	AVERAGE QUEUE (VEH)	MAIN ROUTE		SITE
	DEMAND FLOW	PCT HEAVY		MAIN ROUTE	'DIVER TED'			WITHOUT WORK ZONE	WITH WORK ZONE	
MID-1 AM	413	0.0	1500	413	0	0.46	0	65.6	56.9	43.8
1-2 AM	253	0.0	1500	253	0	0.45	0	65.9	57.4	44.5
2-3 AM	224	0.0	1500	224	0	0.44	0	66.0	57.4	44.6
3-4 AM	217	0.0	1500	217	0	0.44	0	66.0	57.5	44.6
4-5 AM	307	0.0	1500	307	0	0.45	0	65.8	57.2	44.3
5-6 AM	810	0.0	OFF	810	0	0.00	0	64.9	64.9	64.9
6-7 AM	1901	0.0	OFF	1901	0	0.00	0	62.8	62.8	62.8
7-8 AM	2922	0.0	OFF	2922	0	0.00	0	56.6	56.6	56.6
8-9 AM	2887	0.0	OFF	2887	0	0.00	0	56.9	56.9	56.9
9-10 AM	2422	0.0	OFF	2422	0	0.00	0	61.7	61.7	61.7
10-11 AM	2664	0.0	OFF	2664	0	0.00	0	59.2	59.2	59.2
11AM-NOON	2984	0.0	OFF	2984	0	0.00	0	56.0	56.0	56.0
NOON-1PM	3151	0.0	OFF	3151	0	0.00	0	54.2	54.2	54.2
1-2 PM	3343	0.0	OFF	3343	0	0.00	0	52.2	52.2	52.2
2-3 PM	3787	0.0	OFF	3787	0	0.00	0	47.7	47.7	47.7
3-4 PM	4124	0.0	OFF	4124	0	0.00	0	44.3	44.3	44.3
4-5 PM	4266	0.0	OFF	4266	0	0.00	0	42.8	42.8	42.8
5-6 PM	4098	0.0	OFF	4098	0	0.00	0	44.5	44.5	44.5
6-7 PM	3630	0.0	OFF	3630	0	0.00	0	49.3	49.3	49.3
7-8 PM	2318	0.0	1499	1893	425	12.47+	321	62.0	12.7	31.7
8-9 PM	1969	0.0	1499	1500	469	15.95+	403	62.7	10.7	30.8
9-10 PM	1856	0.0	1500	1500	356	15.96+	403	62.9	10.7	30.8
10-11 PM	1497	0.0	1500	1438	59	15.20+	383	63.6	11.0	30.8
11PM-MID	889	0.0	1499	889	0	2.68	112	64.7	34.5	39.1

"OFF" INDICATES NO ROAD WORK (ALL LANES OPEN TO TRAFFIC)

+ INDICATES QUEUEING EXCEEDS USER-SPECIFIED MAXIMUM LIMIT

----- SITE BREAKDOWN DELAYS -----	
BREAKDOWN DURATION (MINS)	0
RANGE OF QUEUE DELAY - MIN (VEH-H) MAX	0.0
AV BREAKDOWNS PER DAY	0.00
AV QUEUE DELAY/DAY (VEH-H)	0.0
AV TOTAL DELAY/DAY (VEH-H)	0.0

----- SITE ACCIDENT DELAYS -----	
BREAKDOWN DURATION (MINS)	0
RANGE OF QUEUE DELAY - MIN (VEH-H) MAX	0
AV BREAKDOWNS PER DAY	0
AV QUEUE DELAY/DAY (VEH-H)	0
AV TOTAL DELAY/DAY (VEH-H)	0

AVERAGE ACCIDENT NUMBERS (PIA/DAY)	
MAIN ROUTE WITHOUT WORKS	0.0278
MAIN ROUTE WITH WORKS	0.0265
'DIVERSION'	0.0016

PIA: Personal Injury Accidents

ECONOMIC IMPACT ON ROAD USERS	
ROAD USER COSTS PER DAY	\$28,153
CONGESTED HOURS PER DAY*	4

*Delays Exceeding User-Specified Maximum

IH 43: STH 100/BROWN DEER RD TO SILVER SPRING DR (MILWAUKEE COUNTY)
NIGHTTIME CLOSURE
NO DIVERSION ROUTE (MAX QUEUE METHOD)

OCTOBER
 Analyzed for 2009
 Construction Season

GRAPHICAL REPRESENTATION OF TRAFFIC MODEL INPUT AND OUTPUT
FRIDAY NORTHBOUND DIRECTION

