

IH 43: SILVER SPRING DR TO STH 190 (MILWAUKEE COUNTY) NIGHTTIME 2 LANE CLOSURE NO DIVERSION ROUTE (MAX QUEUE METHOD)	OCTOBER
	Analyzed for 2009 Construction Season

SUMMARY OF TRAFFIC MODEL OUTPUT

SATURDAY SOUTHBOUND DIRECTION

TIME OF DAY	FLOWS AND CAPACITY IN VEH/HR							AVERAGE SPEEDS IN MPH			
	MAIN ROUTE		SITE CAPA CITY	FLOW		AV.DEL PER VEH (MINS)	AVERAGE QUEUE (VEH)	MAIN ROUTE		SITE	
	DEMAND FLOW	PCT HEAVY		MAIN ROUTE	'DIVER TED'			WITHOUT WORK ZONE	WITH WORK ZONE		
MID-1 AM	596	0.0	1500	596	0	0.77	10	70.0	55.3	43.1	
1-2 AM	307	0.0	1500	307	0	0.51	0	70.2	59.7	44.3	
2-3 AM	215	0.0	1500	215	0	0.50	0	70.2	59.9	44.6	
3-4 AM	215	0.0	1500	215	0	0.50	0	70.2	59.9	44.6	
4-5 AM	319	0.0	1500	319	0	0.51	0	70.2	59.7	44.2	
5-6 AM	549	0.0	1500	549	0	0.54	0	70.0	59.1	43.3	
6-7 AM	931	0.0	1499	931	0	0.58	0	69.6	58.1	41.9	
7-8 AM	1693	0.0	1499	1693	0	2.45	50	68.6	37.6	30.8	
8-9 AM	2405	0.0	OFF	2405	0	0.06	5	67.8	66.4	66.4	
9-10 AM	2828	0.0	OFF	2828	0	0.00	0	67.2	67.2	67.2	
10-11 AM	3139	0.0	OFF	3139	0	0.00	0	66.8	66.8	66.8	
11AM-NOON	3332	0.0	OFF	3332	0	0.00	0	66.6	66.6	66.6	
NOON-1PM	3442	0.0	OFF	3442	0	0.00	0	66.4	66.4	66.4	
1-2 PM	3329	0.0	OFF	3329	0	0.00	0	66.6	66.6	66.6	
2-3 PM	3359	0.0	OFF	3359	0	0.00	0	66.6	66.6	66.6	
3-4 PM	3375	0.0	OFF	3375	0	0.00	0	66.5	66.5	66.5	
4-5 PM	3326	0.0	OFF	3326	0	0.00	0	66.6	66.6	66.6	
5-6 PM	3472	0.0	OFF	3472	0	0.00	0	66.4	66.4	66.4	
6-7 PM	3338	0.0	1499	1550	1788	16.47+	412	66.6	10.4	36.6	
7-8 PM	2602	0.0	1499	1592	1010	14.14+	375	67.5	11.9	36.0	
8-9 PM	1874	0.0	1499	1740	134	13.13+	331	68.4	12.7	30.8	
9-10 PM	1753	0.0	1500	1500	253	16.36+	400	68.6	10.6	30.8	
10-11 PM	1654	0.0	1500	1512	143	16.31+	398	68.7	10.6	30.8	
11PM-MID	1233	0.0	1499	1233	0	11.59	294	69.2	14.0	32.2	

"OFF" INDICATES NO ROAD WORK (ALL LANES OPEN TO TRAFFIC)

+ INDICATES QUEUEING EXCEEDS USER-SPECIFIED MAXIMUM LIMIT

----- SITE BREAKDOWN DELAYS -----	
BREAKDOWN DURATION (MINS)	0
RANGE OF QUEUE DELAY - MIN (VEH-H) MAX	0.0
AV BREAKDOWNS PER DAY	0.00
AV QUEUE DELAY/DAY (VEH-H)	0.0
AV TOTAL DELAY/DAY (VEH-H)	0.0

----- SITE ACCIDENT DELAYS -----	
BREAKDOWN DURATION (MINS)	0
RANGE OF QUEUE DELAY - MIN (VEH-H) MAX	0
AV BREAKDOWNS PER DAY	0
AV QUEUE DELAY/DAY (VEH-H)	0
AV TOTAL DELAY/DAY (VEH-H)	0

AVERAGE ACCIDENT NUMBERS (PIA/DAY)	
MAIN ROUTE WITHOUT WORKS	0.0267
MAIN ROUTE WITH WORKS	0.0239
'DIVERSION'	0.0042
<small>PIA: Personal Injury Accidents</small>	
IMPACTS ON ROAD USERS	
ROAD USER COSTS PER DAY	\$49,807
CONGESTED HOURS PER DAY*	5

*Delays Exceeding User-Specified Maximum

IH 43: SILVER SPRING DR TO STH 190 (MILWAUKEE COUNTY)
NIGHTTIME 2 LANE CLOSURE
NO DIVERSION ROUTE (MAX QUEUE METHOD)

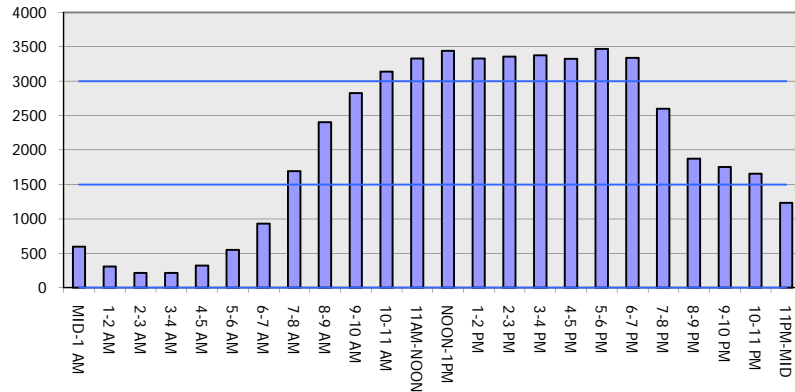
OCTOBER

Analyzed for 2009
 Construction Season

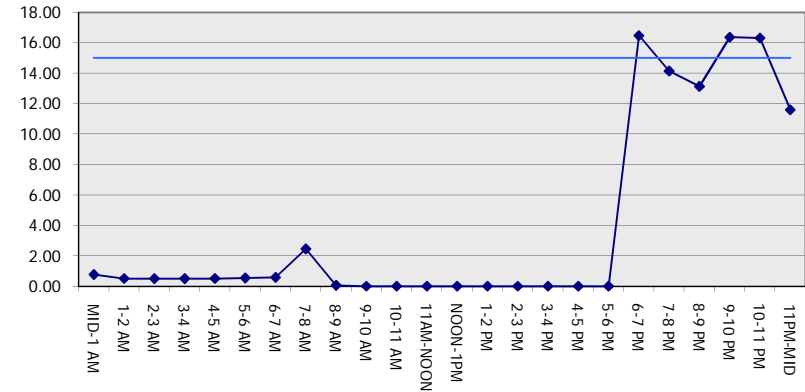
GRAPHICAL REPRESENTATION OF TRAFFIC MODEL INPUT AND OUTPUT

SATURDAY SOUTHBOUND DIRECTION

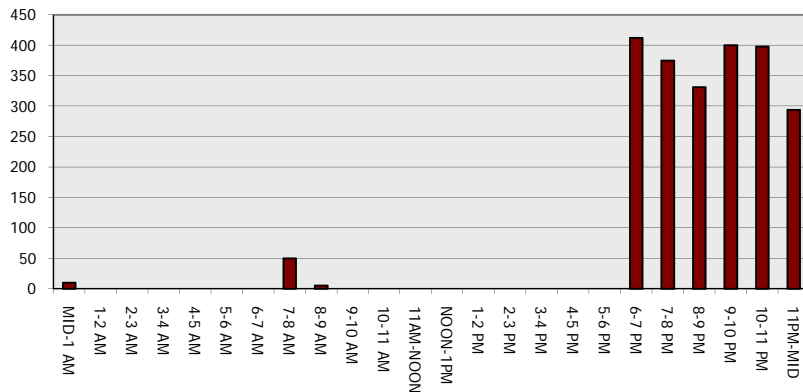
Main Route - Traffic Demand (Vehicles Per Hour)



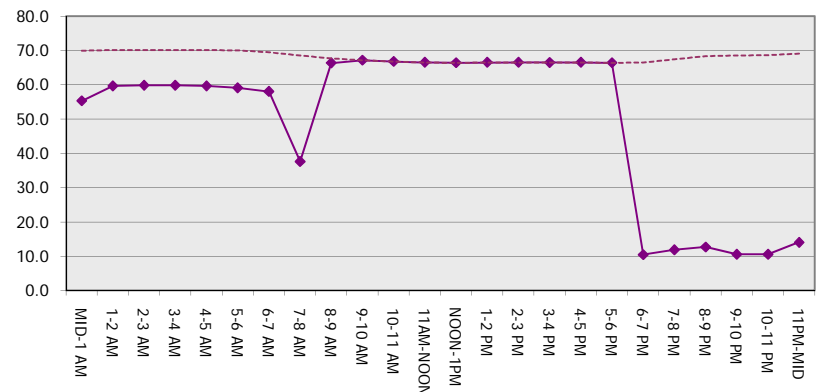
Main Route Average Delay Per Vehicle (Minutes)



Main Route - Average Queue Length (Vehicles)



Main Route - Average Speed (MPH)



IH 43: SILVER SPRING DR TO STH 190 (MILWAUKEE COUNTY) NIGHTTIME 2 LANE CLOSURE NO DIVERSION ROUTE (MAX QUEUE METHOD)	OCTOBER
	Analyzed for 2009 Construction Season

SUMMARY OF TRAFFIC MODEL OUTPUT

SATURDAY NORTHBOUND DIRECTION

TIME OF DAY	FLOWS AND CAPACITY IN VEH/HR						AVERAGE SPEEDS IN MPH			
	MAIN ROUTE		SITE CAPA CITY	FLOW		AV.DEL PER VEH (MINS)	AVERAGE QUEUE (VEH)	MAIN ROUTE		SITE
	DEMAND FLOW	PCT HEAVY		MAIN ROUTE	'DIVER TED'			WITHOUT WORK ZONE	WITH WORK ZONE	
MID-1 AM	944	0.0	1499	944	0	3.44	139	69.6	32.0	38.0
1-2 AM	627	0.0	1500	627	0	0.55	0	69.9	58.9	43.0
2-3 AM	584	0.0	1500	584	0	0.54	0	70.0	59.0	43.2
3-4 AM	427	0.0	1500	427	0	0.52	0	70.2	59.4	43.8
4-5 AM	417	0.0	1500	417	0	0.52	0	70.2	59.4	43.8
5-6 AM	629	0.0	1500	629	0	0.55	0	69.9	58.9	43.0
6-7 AM	1007	0.0	1499	1007	0	0.61	0	69.5	57.5	41.0
7-8 AM	1862	0.0	1499	1862	0	4.85	134	68.4	26.0	30.8
8-9 AM	2498	0.0	OFF	2498	0	0.21	18	67.6	63.3	63.3
9-10 AM	2789	0.0	OFF	2789	0	0.00	0	67.3	67.3	67.3
10-11 AM	3175	0.0	OFF	3175	0	0.00	0	66.8	66.8	66.8
11AM-NOON	3446	0.0	OFF	3446	0	0.00	0	66.4	66.4	66.4
NOON-1PM	3711	0.0	OFF	3711	0	0.00	0	65.5	65.5	65.5
1-2 PM	3518	0.0	OFF	3518	0	0.00	0	66.4	66.4	66.4
2-3 PM	3518	0.0	OFF	3518	0	0.00	0	66.4	66.4	66.4
3-4 PM	3456	0.0	OFF	3456	0	0.00	0	66.4	66.4	66.4
4-5 PM	3352	0.0	OFF	3352	0	0.00	0	66.6	66.6	66.6
5-6 PM	3131	0.0	OFF	3131	0	0.00	0	66.8	66.8	66.8
6-7 PM	2711	0.0	1499	1701	1010	13.95+	352	67.4	12.0	35.6
7-8 PM	2218	0.0	1499	1717	501	15.11+	374	68.0	11.2	31.2
8-9 PM	1936	0.0	1499	1500	436	16.35+	399	68.3	10.6	30.8
9-10 PM	1955	0.0	1500	1500	455	16.35+	400	68.3	10.6	30.8
10-11 PM	2192	0.0	1500	1500	692	16.34+	400	68.0	10.6	30.8
11PM-MID	1557	0.0	1500	1442	115	16.12+	393	68.8	10.7	30.8

"OFF" INDICATES NO ROAD WORK (ALL LANES OPEN TO TRAFFIC)

+ INDICATES QUEUEING EXCEEDS USER-SPECIFIED MAXIMUM LIMIT

----- SITE BREAKDOWN DELAYS -----	
BREAKDOWN DURATION (MINS)	0
RANGE OF QUEUE DELAY - MIN (VEH-H) MAX	0.0
AV BREAKDOWNS PER DAY	0.00
AV QUEUE DELAY/DAY (VEH-H)	0.0
AV TOTAL DELAY/DAY (VEH-H)	0.0

----- SITE ACCIDENT DELAYS -----	
BREAKDOWN DURATION (MINS)	0
RANGE OF QUEUE DELAY - MIN (VEH-H) MAX	0
AV BREAKDOWNS PER DAY	0
AV QUEUE DELAY/DAY (VEH-H)	0
AV TOTAL DELAY/DAY (VEH-H)	0

AVERAGE ACCIDENT NUMBERS (PIA/DAY)	
MAIN ROUTE WITHOUT WORKS	0.0279
MAIN ROUTE WITH WORKS	0.0252
'DIVERSION'	0.0040

PIA: Personal Injury Accidents

ECONOMIC IMPACT ON ROAD USERS	
ROAD USER COSTS PER DAY	\$54,539
CONGESTED HOURS PER DAY*	6

*Delays Exceeding User-Specified Maximum

IH 43: SILVER SPRING DR TO STH 190 (MILWAUKEE COUNTY)
NIGHTTIME 2 LANE CLOSURE
NO DIVERSION ROUTE (MAX QUEUE METHOD)

OCTOBER

Analyzed for 2009
 Construction Season

GRAPHICAL REPRESENTATION OF TRAFFIC MODEL INPUT AND OUTPUT
SATURDAY NORTHBOUND DIRECTION

