

IH 43: SILVER SPRING DR TO STH 190 (MILWAUKEE COUNTY) NIGHTTIME CLOSURE NO DIVERSION ROUTE (MAX QUEUE METHOD)	OCTOBER
	Analyzed for 2009 Construction Season

SUMMARY OF TRAFFIC MODEL OUTPUT

SATURDAY SOUTHBOUND DIRECTION

TIME OF DAY	FLOWS AND CAPACITY IN VEH/HR						AVERAGE SPEEDS IN MPH			
	MAIN ROUTE		SITE CAPA CITY	FLOW		AV.DEL PER VEH (MINS)	AVERAGE QUEUE (VEH)	MAIN ROUTE		SITE
	DEMAND FLOW	PCT HEAVY		MAIN ROUTE	'DIVER TED'			WITHOUT WORK ZONE	WITH WORK ZONE	
MID-1 AM	596	0.0	3000	596	0	0.36	0	70.0	62.3	49.7
1-2 AM	307	0.0	3000	307	0	0.36	0	70.2	62.5	49.7
2-3 AM	215	0.0	3000	215	0	0.36	0	70.2	62.5	49.7
3-4 AM	215	0.0	3000	215	0	0.36	0	70.2	62.5	49.7
4-5 AM	319	0.0	3000	319	0	0.36	0	70.2	62.5	49.7
5-6 AM	549	0.0	3000	549	0	0.36	0	70.0	62.4	49.7
6-7 AM	931	0.0	3000	931	0	0.35	0	69.6	62.1	49.7
7-8 AM	1693	0.0	3000	1693	0	0.34	0	68.6	61.6	49.7
8-9 AM	2405	0.0	OFF	2405	0	0.00	0	67.8	67.8	67.8
9-10 AM	2828	0.0	OFF	2828	0	0.00	0	67.2	67.2	67.2
10-11 AM	3139	0.0	OFF	3139	0	0.00	0	66.8	66.8	66.8
11AM-NOON	3332	0.0	OFF	3332	0	0.00	0	66.6	66.6	66.6
NOON-1PM	3442	0.0	OFF	3442	0	0.00	0	66.4	66.4	66.4
1-2 PM	3329	0.0	OFF	3329	0	0.00	0	66.6	66.6	66.6
2-3 PM	3359	0.0	OFF	3359	0	0.00	0	66.6	66.6	66.6
3-4 PM	3375	0.0	OFF	3375	0	0.00	0	66.5	66.5	66.5
4-5 PM	3326	0.0	OFF	3326	0	0.00	0	66.6	66.6	66.6
5-6 PM	3472	0.0	OFF	3472	0	0.00	0	66.4	66.4	66.4
6-7 PM	3338	0.0	2999	3338	0	3.95	196	66.6	29.1	37.3
7-8 PM	2602	0.0	2999	2602	0	3.27	188	67.5	32.4	41.2
8-9 PM	1874	0.0	3000	1874	0	0.34	0	68.4	61.5	49.7
9-10 PM	1753	0.0	3000	1753	0	0.34	0	68.6	61.5	49.7
10-11 PM	1654	0.0	3000	1654	0	0.34	0	68.7	61.6	49.7
11PM-MID	1233	0.0	3000	1233	0	0.35	0	69.2	61.9	49.7

"OFF" INDICATES NO ROAD WORK (ALL LANES OPEN TO TRAFFIC)

----- SITE BREAKDOWN DELAYS -----	
BREAKDOWN DURATION (MINS)	0
RANGE OF QUEUE DELAY - MIN (VEH-H) MAX	0.0
AV BREAKDOWNS PER DAY	0.00
AV QUEUE DELAY/DAY (VEH-H)	0.0
AV TOTAL DELAY/DAY (VEH-H)	0.0

----- SITE ACCIDENT DELAYS -----	
BREAKDOWN DURATION (MINS)	0
RANGE OF QUEUE DELAY - MIN (VEH-H) MAX	0
AV BREAKDOWNS PER DAY	0
AV QUEUE DELAY/DAY (VEH-H)	0
AV TOTAL DELAY/DAY (VEH-H)	0

AVERAGE ACCIDENT NUMBERS (PIA/DAY)	
MAIN ROUTE WITHOUT WORKS	0.0267
MAIN ROUTE WITH WORKS	0.0255
'DIVERSION'	0.0000
PIA: Personal Injury Accidents	
IMPACTS ON ROAD USERS	
ROAD USER COSTS PER DAY	\$7,119
CONGESTED HOURS PER DAY*	0

*Delays Exceeding User-Specified Maximum

IH 43: SILVER SPRING DR TO STH 190 (MILWAUKEE COUNTY)
NIGHTTIME CLOSURE
NO DIVERSION ROUTE (MAX QUEUE METHOD)

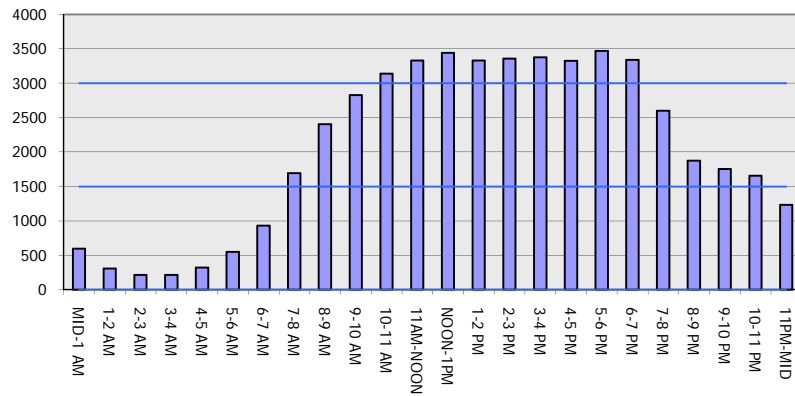
OCTOBER

Analyzed for 2009
 Construction Season

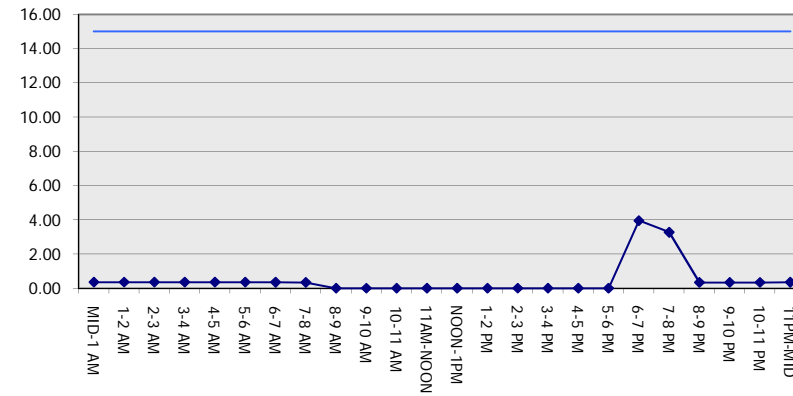
GRAPHICAL REPRESENTATION OF TRAFFIC MODEL INPUT AND OUTPUT

SATURDAY SOUTHBOUND DIRECTION

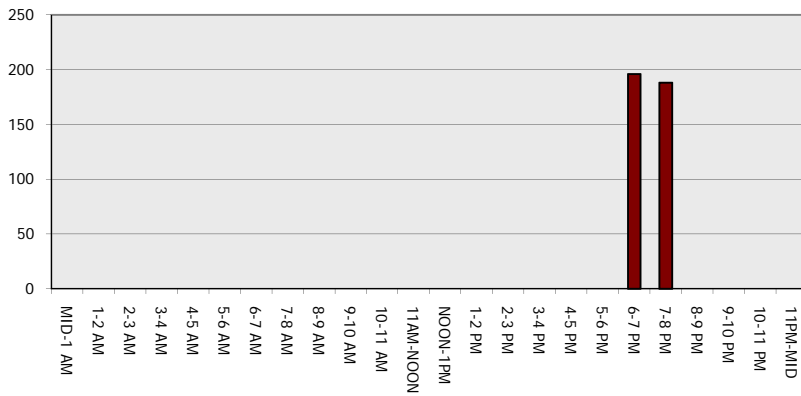
Main Route - Traffic Demand (Vehicles Per Hour)



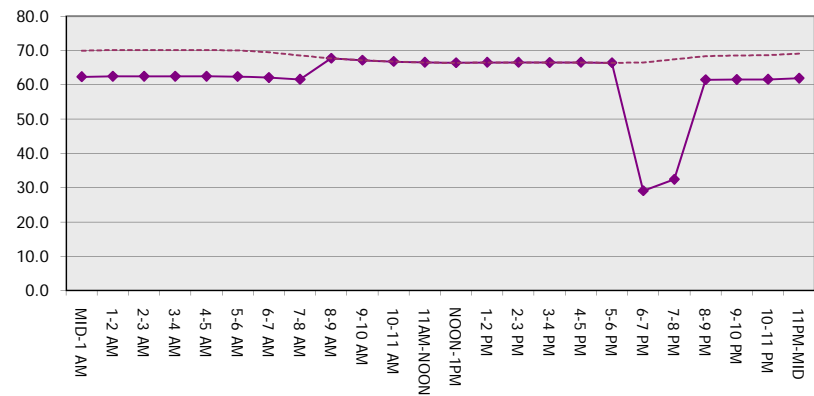
Main Route Average Delay Per Vehicle (Minutes)



Main Route - Average Queue Length (Vehicles)



Main Route - Average Speed (MPH)



IH 43: SILVER SPRING DR TO STH 190 (MILWAUKEE COUNTY) NIGHTTIME CLOSURE NO DIVERSION ROUTE (MAX QUEUE METHOD)	OCTOBER
	Analyzed for 2009 Construction Season

SUMMARY OF TRAFFIC MODEL OUTPUT

SATURDAY NORTHBOUND DIRECTION

TIME OF DAY	FLOWS AND CAPACITY IN VEH/HR						AVERAGE SPEEDS IN MPH			
	MAIN ROUTE		SITE CAPA CITY	FLOW		AV.DEL PER VEH (MINS)	AVERAGE QUEUE (VEH)	MAIN ROUTE		SITE
	DEMAND FLOW	PCT HEAVY		MAIN ROUTE	'DIVER TED'			WITHOUT WORK ZONE	WITH WORK ZONE	
MID-1 AM	944	0.0	3000	944	0	0.35	0	69.6	62.1	49.7
1-2 AM	627	0.0	3000	627	0	0.36	0	69.9	62.3	49.7
2-3 AM	584	0.0	3000	584	0	0.36	0	70.0	62.3	49.7
3-4 AM	427	0.0	3000	427	0	0.36	0	70.2	62.5	49.7
4-5 AM	417	0.0	3000	417	0	0.36	0	70.2	62.5	49.7
5-6 AM	629	0.0	3000	629	0	0.36	0	69.9	62.3	49.7
6-7 AM	1007	0.0	3000	1007	0	0.35	0	69.5	62.0	49.7
7-8 AM	1862	0.0	3000	1862	0	0.34	0	68.4	61.5	49.7
8-9 AM	2498	0.0	OFF	2498	0	0.00	0	67.6	67.6	67.6
9-10 AM	2789	0.0	OFF	2789	0	0.00	0	67.3	67.3	67.3
10-11 AM	3175	0.0	OFF	3175	0	0.00	0	66.8	66.8	66.8
11AM-NOON	3446	0.0	OFF	3446	0	0.00	0	66.4	66.4	66.4
NOON-1PM	3711	0.0	OFF	3711	0	0.00	0	65.5	65.5	65.5
1-2 PM	3518	0.0	OFF	3518	0	0.00	0	66.4	66.4	66.4
2-3 PM	3518	0.0	OFF	3518	0	0.00	0	66.4	66.4	66.4
3-4 PM	3456	0.0	OFF	3456	0	0.00	0	66.4	66.4	66.4
4-5 PM	3352	0.0	OFF	3352	0	0.00	0	66.6	66.6	66.6
5-6 PM	3131	0.0	OFF	3131	0	0.00	0	66.8	66.8	66.8
6-7 PM	2711	0.0	3000	2711	0	0.54	0	67.4	57.1	42.2
7-8 PM	2218	0.0	3000	2218	0	0.33	0	68.0	61.2	49.7
8-9 PM	1936	0.0	3000	1936	0	0.34	0	68.3	61.4	49.7
9-10 PM	1955	0.0	3000	1955	0	0.34	0	68.3	61.4	49.7
10-11 PM	2192	0.0	3000	2192	0	0.33	0	68.0	61.2	49.7
11PM-MID	1557	0.0	3000	1557	0	0.34	0	68.8	61.7	49.7

"OFF" INDICATES NO ROAD WORK (ALL LANES OPEN TO TRAFFIC)

----- SITE BREAKDOWN DELAYS -----	
BREAKDOWN DURATION (MINS)	0
RANGE OF QUEUE DELAY - MIN (VEH-H) MAX	0.0
AV BREAKDOWNS PER DAY	0.00
AV QUEUE DELAY/DAY (VEH-H)	0.0
AV TOTAL DELAY/DAY (VEH-H)	0.0

----- SITE ACCIDENT DELAYS -----	
BREAKDOWN DURATION (MINS)	0
RANGE OF QUEUE DELAY - MIN (VEH-H) MAX	0
AV BREAKDOWNS PER DAY	0
AV QUEUE DELAY/DAY (VEH-H)	0
AV TOTAL DELAY/DAY (VEH-H)	0

AVERAGE ACCIDENT NUMBERS (PIA/DAY)	
MAIN ROUTE WITHOUT WORKS	0.0279
MAIN ROUTE WITH WORKS	0.0267
'DIVERSION'	0.0000

PIA: Personal Injury Accidents

ECONOMIC IMPACT ON ROAD USERS	
ROAD USER COSTS PER DAY	\$1,960
CONGESTED HOURS PER DAY*	0

*Delays Exceeding User-Specified Maximum

IH 43: SILVER SPRING DR TO STH 190 (MILWAUKEE COUNTY)
NIGHTTIME CLOSURE
NO DIVERSION ROUTE (MAX QUEUE METHOD)

OCTOBER

Analyzed for 2009
 Construction Season

GRAPHICAL REPRESENTATION OF TRAFFIC MODEL INPUT AND OUTPUT
SATURDAY NORTHBOUND DIRECTION

