

IH 43: SILVER SPRING DR TO STH 190 (MILWAUKEE COUNTY) NIGHTTIME 2 LANE CLOSURE NO DIVERSION ROUTE (MAX QUEUE METHOD)	OCTOBER
	Analyzed for 2009 Construction Season

SUMMARY OF TRAFFIC MODEL OUTPUT

MON-THUR SOUTHBOUND DIRECTION

TIME OF DAY	FLOWS AND CAPACITY IN VEH/HR						AVERAGE SPEEDS IN MPH				
	MAIN ROUTE		SITE CAPA CITY	FLOW		AV.DEL PER VEH (MINS)	AVERAGE QUEUE (VEH)	MAIN ROUTE		SITE	
	DEMAND FLOW	PCT HEAVY		MAIN ROUTE	'DIVER TED'			WITHOUT WORK ZONE	WITH WORK ZONE		
MID-1 AM	420	0.0	1500	420	0	0.52	0	70.2	59.4	43.8	
1-2 AM	291	0.0	1500	291	0	0.51	0	70.2	59.7	44.3	
2-3 AM	209	0.0	1500	209	0	0.50	0	70.2	59.9	44.6	
3-4 AM	221	0.0	1500	221	0	0.50	0	70.2	59.9	44.6	
4-5 AM	519	0.0	1500	519	0	0.53	0	70.1	59.2	43.4	
5-6 AM	1571	0.0	OFF	1571	0	0.00	0	68.8	68.8	68.8	
6-7 AM	3864	0.0	OFF	3864	0	0.00	0	64.5	64.5	64.5	
7-8 AM	5488	0.0	OFF	5488	0	0.00	0	53.3	53.3	53.3	
8-9 AM	4758	0.0	OFF	4758	0	0.00	0	58.4	58.4	58.4	
9-10 AM	3478	0.0	OFF	3478	0	0.00	0	66.4	66.4	66.4	
10-11 AM	3040	0.0	OFF	3040	0	0.00	0	66.9	66.9	66.9	
11AM-NOON	3218	0.0	OFF	3218	0	0.00	0	66.8	66.8	66.8	
NOON-1PM	3367	0.0	OFF	3367	0	0.00	0	66.6	66.6	66.6	
1-2 PM	3431	0.0	OFF	3431	0	0.00	0	66.4	66.4	66.4	
2-3 PM	3966	0.0	OFF	3966	0	0.00	0	63.8	63.8	63.8	
3-4 PM	4404	0.0	OFF	4404	0	0.00	0	60.8	60.8	60.8	
4-5 PM	4220	0.0	OFF	4220	0	0.00	0	62.0	62.0	62.0	
5-6 PM	4486	0.0	OFF	4486	0	0.00	0	60.2	60.2	60.2	
6-7 PM	3574	0.0	OFF	3574	0	0.00	0	66.3	66.3	66.3	
7-8 PM	2409	0.0	1499	1828	581	13.10+	325	67.8	12.7	33.6	
8-9 PM	1883	0.0	1499	1538	345	16.19+	395	68.4	10.6	30.8	
9-10 PM	1590	0.0	1500	1522	69	16.04+	391	68.7	10.7	30.8	
10-11 PM	1128	0.0	1499	1128	0	8.09	227	69.3	18.5	34.3	
11PM-MID	744	0.0	1500	744	0	0.57	0	69.8	58.5	42.6	

"OFF" INDICATES NO ROAD WORK (ALL LANES OPEN TO TRAFFIC)

+ INDICATES QUEUEING EXCEEDS USER-SPECIFIED MAXIMUM LIMIT

----- SITE BREAKDOWN DELAYS -----	
BREAKDOWN DURATION (MINS)	0
RANGE OF QUEUE DELAY - MIN (VEH-H) MAX	0.0
AV BREAKDOWNS PER DAY	0.00
AV QUEUE DELAY/DAY (VEH-H)	0.0
AV TOTAL DELAY/DAY (VEH-H)	0.0

----- SITE ACCIDENT DELAYS -----	
BREAKDOWN DURATION (MINS)	0
RANGE OF QUEUE DELAY - MIN (VEH-H) MAX	0
AV BREAKDOWNS PER DAY	0
AV QUEUE DELAY/DAY (VEH-H)	0
AV TOTAL DELAY/DAY (VEH-H)	0

AVERAGE ACCIDENT NUMBERS (PIA/DAY)	
MAIN ROUTE WITHOUT WORKS	0.0337
MAIN ROUTE WITH WORKS	0.0326
'DIVERSION'	0.0012
<small>PIA: Personal Injury Accidents</small>	
IMPACTS ON ROAD USERS	
ROAD USER COSTS PER DAY	\$22,289
CONGESTED HOURS PER DAY*	3

*Delays Exceeding User-Specified Maximum

IH 43: SILVER SPRING DR TO STH 190 (MILWAUKEE COUNTY)
NIGHTTIME 2 LANE CLOSURE
NO DIVERSION ROUTE (MAX QUEUE METHOD)

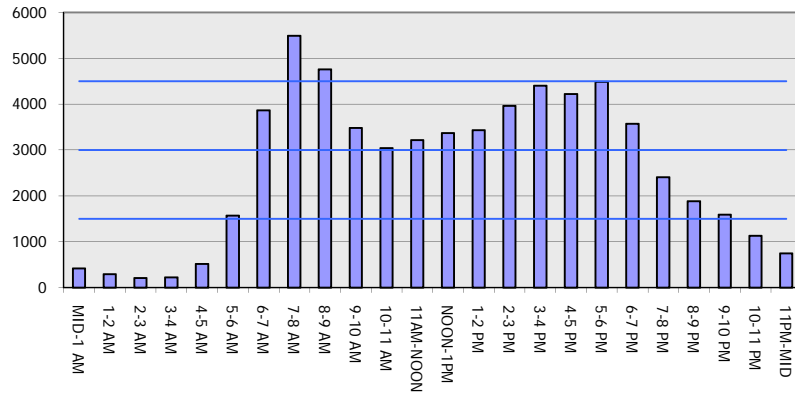
OCTOBER

Analyzed for 2009
 Construction Season

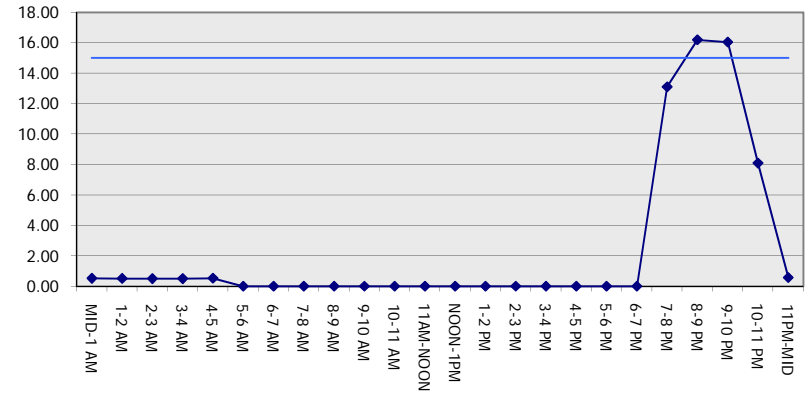
GRAPHICAL REPRESENTATION OF TRAFFIC MODEL INPUT AND OUTPUT

MON-THUR SOUTHBOUND DIRECTION

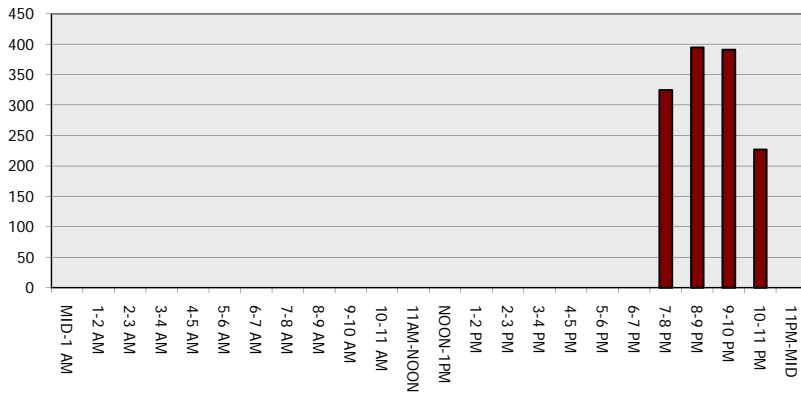
Main Route - Traffic Demand (Vehicles Per Hour)



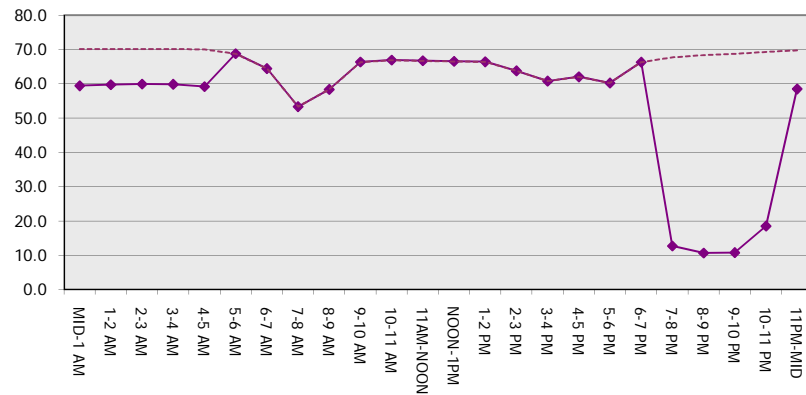
Main Route Average Delay Per Vehicle (Minutes)



Main Route - Average Queue Length (Vehicles)



Main Route - Average Speed (MPH)



IH 43: SILVER SPRING DR TO STH 190 (MILWAUKEE COUNTY) NIGHTTIME 2 LANE CLOSURE NO DIVERSION ROUTE (MAX QUEUE METHOD)	OCTOBER
	Analyzed for 2009 Construction Season

SUMMARY OF TRAFFIC MODEL OUTPUT

MON-THUR NORTHBOUND DIRECTION

TIME OF DAY	FLOWS AND CAPACITY IN VEH/HR						AVERAGE SPEEDS IN MPH			
	MAIN ROUTE		SITE CAPA CITY	FLOW		AV.DEL PER VEH (MINS)	AVERAGE QUEUE (VEH)	MAIN ROUTE		SITE
	DEMAND FLOW	PCT HEAVY		MAIN ROUTE	'DIVER TED'			WITHOUT WORK ZONE	WITH WORK ZONE	
MID-1 AM	516	0.0	1500	516	0	0.53	0	70.1	59.2	43.5
1-2 AM	324	0.0	1500	324	0	0.51	0	70.2	59.7	44.2
2-3 AM	270	0.0	1500	270	0	0.51	0	70.2	59.8	44.4
3-4 AM	297	0.0	1500	297	0	0.51	0	70.2	59.7	44.3
4-5 AM	485	0.0	1500	485	0	0.53	0	70.1	59.3	43.6
5-6 AM	1503	0.0	OFF	1503	0	0.00	0	68.9	68.9	68.9
6-7 AM	3222	0.0	OFF	3222	0	0.00	0	66.8	66.8	66.8
7-8 AM	4476	0.0	OFF	4476	0	0.00	0	60.3	60.3	60.3
8-9 AM	3928	0.0	OFF	3928	0	0.00	0	64.0	64.0	64.0
9-10 AM	3047	0.0	OFF	3047	0	0.00	0	66.9	66.9	66.9
10-11 AM	2843	0.0	OFF	2843	0	0.00	0	67.2	67.2	67.2
11AM-NOON	3062	0.0	OFF	3062	0	0.00	0	66.9	66.9	66.9
NOON-1PM	3243	0.0	OFF	3243	0	0.00	0	66.7	66.7	66.7
1-2 PM	3337	0.0	OFF	3337	0	0.00	0	66.6	66.6	66.6
2-3 PM	3909	0.0	OFF	3909	0	0.00	0	64.1	64.1	64.1
3-4 PM	4636	0.0	OFF	4636	0	0.00	0	59.2	59.2	59.2
4-5 PM	5228	0.0	OFF	5228	0	0.00	0	55.1	55.1	55.1
5-6 PM	5399	0.0	OFF	5399	0	0.00	0	54.0	54.0	54.0
6-7 PM	3878	0.0	OFF	3878	0	0.00	0	64.3	64.3	64.3
7-8 PM	2717	0.0	1499	1617	1099	14.55+	369	67.4	11.6	36.1
8-9 PM	2251	0.0	1499	1742	509	13.83+	350	67.9	12.1	32.7
9-10 PM	2026	0.0	1499	1500	526	16.35+	399	68.2	10.6	30.8
10-11 PM	1322	0.0	1500	1322	0	12.47	305	69.1	13.2	31.1
11PM-MID	880	0.0	1500	880	0	1.26	31	69.6	48.7	41.8

"OFF" INDICATES NO ROAD WORK (ALL LANES OPEN TO TRAFFIC)

+ INDICATES QUEUEING EXCEEDS USER-SPECIFIED MAXIMUM LIMIT

----- SITE BREAKDOWN DELAYS -----	
BREAKDOWN DURATION (MINS)	0
RANGE OF QUEUE DELAY - MIN (VEH-H) MAX	0.0
AV BREAKDOWNS PER DAY	0.00
AV QUEUE DELAY/DAY (VEH-H)	0.0
AV TOTAL DELAY/DAY (VEH-H)	0.0

----- SITE ACCIDENT DELAYS -----	
BREAKDOWN DURATION (MINS)	0
RANGE OF QUEUE DELAY - MIN (VEH-H) MAX	0
AV BREAKDOWNS PER DAY	0
AV QUEUE DELAY/DAY (VEH-H)	0
AV TOTAL DELAY/DAY (VEH-H)	0

AVERAGE ACCIDENT NUMBERS (PIA/DAY)	
MAIN ROUTE WITHOUT WORKS	0.0340
MAIN ROUTE WITH WORKS	0.0322
'DIVERSION'	0.0027

PIA: Personal Injury Accidents

ECONOMIC IMPACT ON ROAD USERS	
ROAD USER COSTS PER DAY	\$27,844
CONGESTED HOURS PER DAY*	3

*Delays Exceeding User-Specified Maximum

IH 43: SILVER SPRING DR TO STH 190 (MILWAUKEE COUNTY)
NIGHTTIME 2 LANE CLOSURE
NO DIVERSION ROUTE (MAX QUEUE METHOD)

OCTOBER

Analyzed for 2009
 Construction Season

GRAPHICAL REPRESENTATION OF TRAFFIC MODEL INPUT AND OUTPUT
MON-THUR NORTHBOUND DIRECTION

