

**IH 43: SILVER SPRING DR TO STH 190 (MILWAUKEE COUNTY)
NIGHTTIME 2 LANE CLOSURE
NO DIVERSION ROUTE (MAX QUEUE METHOD)**

OCTOBER
Analyzed for 2009
Construction Season

SUMMARY OF TRAFFIC MODEL OUTPUT
FRIDAY SOUTHBOUND DIRECTION

TIME OF DAY	FLOWS AND CAPACITY IN VEH/HR						AVERAGE SPEEDS IN MPH				
	MAIN ROUTE		SITE CAPA CITY	FLOW		AV.DEL PER VEH (MINS)	AVERAGE QUEUE (VEH)	MAIN ROUTE		SITE	
	DEMAND FLOW	PCT HEAVY		MAIN ROUTE	'DIVER TED'			WITHOUT WORK ZONE	WITH WORK ZONE		
MID-1 AM	441	0.0	1500	441	0	0.53	0	70.2	59.4	43.7	
1-2 AM	250	0.0	1500	250	0	0.50	0	70.2	59.8	44.5	
2-3 AM	210	0.0	1500	210	0	0.50	0	70.2	59.9	44.6	
3-4 AM	235	0.0	1500	235	0	0.50	0	70.2	59.9	44.5	
4-5 AM	517	0.0	1500	517	0	0.53	0	70.1	59.2	43.5	
5-6 AM	1429	0.0	OFF	1429	0	0.00	0	68.9	68.9	68.9	
6-7 AM	3727	0.0	OFF	3727	0	0.00	0	65.4	65.4	65.4	
7-8 AM	5613	0.0	OFF	5613	0	0.00	0	52.5	52.5	52.5	
8-9 AM	4559	0.0	OFF	4559	0	0.00	0	59.7	59.7	59.7	
9-10 AM	3428	0.0	OFF	3428	0	0.00	0	66.4	66.4	66.4	
10-11 AM	3232	0.0	OFF	3232	0	0.00	0	66.7	66.7	66.7	
11AM-NOON	3324	0.0	OFF	3324	0	0.00	0	66.6	66.6	66.6	
NOON-1PM	3542	0.0	OFF	3542	0	0.00	0	66.3	66.3	66.3	
1-2 PM	3689	0.0	OFF	3689	0	0.00	0	65.6	65.6	65.6	
2-3 PM	4163	0.0	OFF	4163	0	0.00	0	62.4	62.4	62.4	
3-4 PM	4456	0.0	OFF	4456	0	0.00	0	60.4	60.4	60.4	
4-5 PM	4561	0.0	OFF	4561	0	0.00	0	59.7	59.7	59.7	
5-6 PM	4494	0.0	OFF	4494	0	0.00	0	60.2	60.2	60.2	
6-7 PM	3886	0.0	OFF	3886	0	0.00	0	64.3	64.3	64.3	
7-8 PM	2733	0.0	1499	1579	1154	15.04+	379	67.3	11.3	36.3	
8-9 PM	2025	0.0	1499	1819	206	12.37+	318	68.2	13.3	30.8	
9-10 PM	1834	0.0	1500	1500	334	16.36+	400	68.4	10.6	30.8	
10-11 PM	1518	0.0	1500	1458	60	15.91+	388	68.9	10.8	30.8	
11PM-MID	1020	0.0	1499	1020	0	4.30	161	69.5	28.2	36.7	

"OFF" INDICATES NO ROAD WORK (ALL LANES OPEN TO TRAFFIC)

+ INDICATES QUEUEING EXCEEDS USER-SPECIFIED MAXIMUM LIMIT

----- SITE BREAKDOWN DELAYS -----	
BREAKDOWN DURATION (MINS)	0
RANGE OF QUEUE DELAY - MIN (VEH-H) MAX	0.0
AV BREAKDOWNS PER DAY	0.00
AV QUEUE DELAY/DAY (VEH-H)	0.0
AV TOTAL DELAY/DAY (VEH-H)	0.0

----- SITE ACCIDENT DELAYS -----	
BREAKDOWN DURATION (MINS)	0
RANGE OF QUEUE DELAY - MIN (VEH-H) MAX	0
AV BREAKDOWNS PER DAY	0
AV QUEUE DELAY/DAY (VEH-H)	0
AV TOTAL DELAY/DAY (VEH-H)	0

AVERAGE ACCIDENT NUMBERS (PIA/DAY)	
MAIN ROUTE WITHOUT WORKS	0.0351
MAIN ROUTE WITH WORKS	0.0336
'DIVERSION'	0.0022
PIA: Personal Injury Accidents	
IMPACTS ON ROAD USERS	
ROAD USER COSTS PER DAY	\$29,806
CONGESTED HOURS PER DAY*	4

*Delays Exceeding User-Specified Maximum

IH 43: SILVER SPRING DR TO STH 190 (MILWAUKEE COUNTY)
NIGHTTIME 2 LANE CLOSURE
NO DIVERSION ROUTE (MAX QUEUE METHOD)

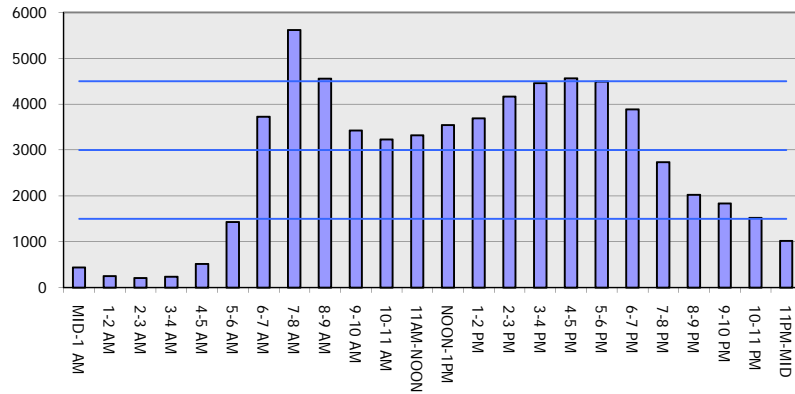
OCTOBER

Analyzed for 2009
 Construction Season

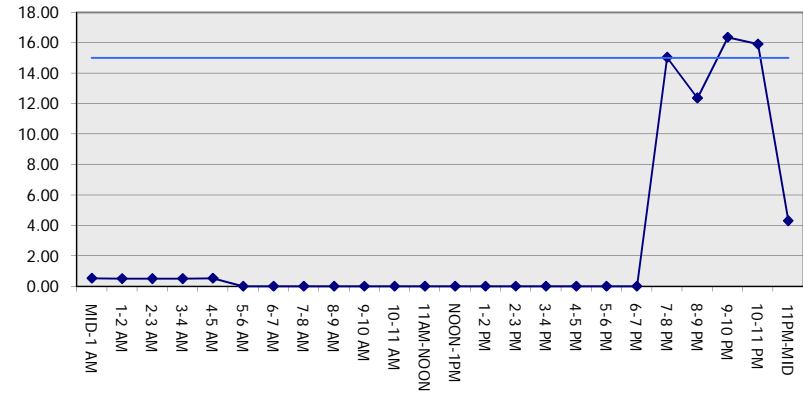
GRAPHICAL REPRESENTATION OF TRAFFIC MODEL INPUT AND OUTPUT

FRIDAY SOUTHBOUND DIRECTION

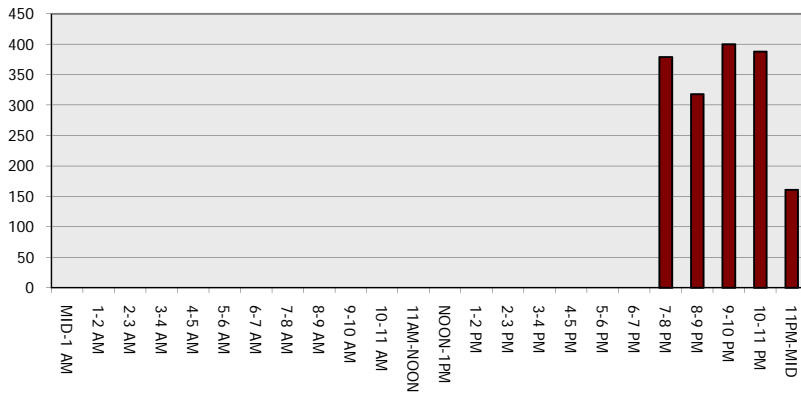
Main Route - Traffic Demand (Vehicles Per Hour)



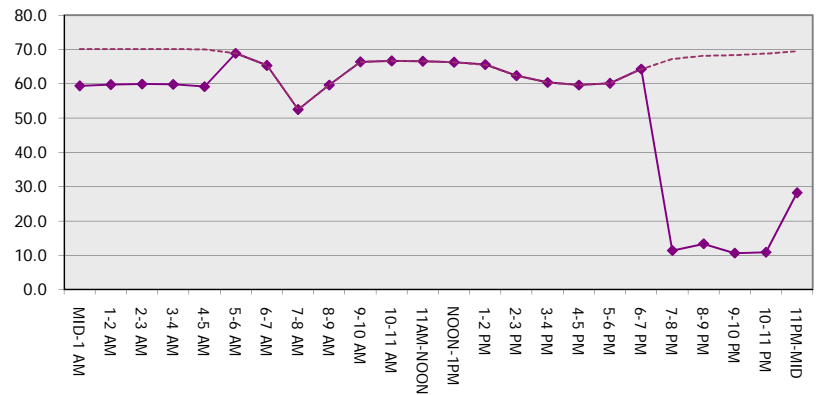
Main Route Average Delay Per Vehicle (Minutes)



Main Route - Average Queue Length (Vehicles)



Main Route - Average Speed (MPH)



IH 43: SILVER SPRING DR TO STH 190 (MILWAUKEE COUNTY) NIGHTTIME 2 LANE CLOSURE NO DIVERSION ROUTE (MAX QUEUE METHOD)	OCTOBER
	Analyzed for 2009 Construction Season

SUMMARY OF TRAFFIC MODEL OUTPUT

FRIDAY NORTHBOUND DIRECTION

TIME OF DAY	FLOWS AND CAPACITY IN VEH/HR						AVERAGE SPEEDS IN MPH			
	MAIN ROUTE		SITE CAPA CITY	FLOW		AV.DEL PER VEH (MINS)	AVERAGE QUEUE (VEH)	MAIN ROUTE		SITE
	DEMAND FLOW	PCT HEAVY		MAIN ROUTE	'DIVER TED'			WITHOUT WORK ZONE	WITH WORK ZONE	
MID-1 AM	695	0.0	1500	695	0	0.73	7	69.9	55.9	42.7
1-2 AM	497	0.0	1500	497	0	0.53	0	70.1	59.2	43.5
2-3 AM	424	0.0	1500	424	0	0.52	0	70.2	59.4	43.8
3-4 AM	391	0.0	1500	391	0	0.52	0	70.2	59.5	43.9
4-5 AM	523	0.0	1500	523	0	0.54	0	70.1	59.2	43.4
5-6 AM	1526	0.0	OFF	1526	0	0.00	0	68.8	68.8	68.8
6-7 AM	3395	0.0	OFF	3395	0	0.00	0	66.5	66.5	66.5
7-8 AM	4663	0.0	OFF	4663	0	0.00	0	59.0	59.0	59.0
8-9 AM	3986	0.0	OFF	3986	0	0.00	0	63.7	63.7	63.7
9-10 AM	3253	0.0	OFF	3253	0	0.00	0	66.7	66.7	66.7
10-11 AM	3428	0.0	OFF	3428	0	0.00	0	66.4	66.4	66.4
11AM-NOON	3760	0.0	OFF	3760	0	0.00	0	65.1	65.1	65.1
NOON-1PM	4097	0.0	OFF	4097	0	0.00	0	62.8	62.8	62.8
1-2 PM	4230	0.0	OFF	4230	0	0.00	0	62.0	62.0	62.0
2-3 PM	4895	0.0	OFF	4895	0	0.00	0	57.4	57.4	57.4
3-4 PM	5583	0.0	OFF	5583	0	0.00	0	52.7	52.7	52.7
4-5 PM	5842	0.0	OFF	5842	0	0.00	0	50.9	50.9	50.9
5-6 PM	5489	0.0	OFF	5489	0	0.00	0	53.3	53.3	53.3
6-7 PM	4020	0.0	OFF	4020	0	0.00	0	63.4	63.4	63.4
7-8 PM	2989	0.0	1499	1550	1439	16.49+	412	67.0	10.4	36.6
8-9 PM	2487	0.0	1499	1777	710	13.33+	342	67.6	12.5	34.3
9-10 PM	2433	0.0	1499	1500	933	16.29+	399	67.7	10.6	31.3
10-11 PM	1841	0.0	1500	1561	279	16.09+	393	68.4	10.7	30.8
11PM-MID	1214	0.0	1499	1214	0	10.91	280	69.2	14.7	32.7

"OFF" INDICATES NO ROAD WORK (ALL LANES OPEN TO TRAFFIC)

+ INDICATES QUEUEING EXCEEDS USER-SPECIFIED MAXIMUM LIMIT

----- SITE BREAKDOWN DELAYS -----	
BREAKDOWN DURATION (MINS)	0
RANGE OF QUEUE DELAY - MIN (VEH-H) MAX	0.0
AV BREAKDOWNS PER DAY	0.00
AV QUEUE DELAY/DAY (VEH-H)	0.0
AV TOTAL DELAY/DAY (VEH-H)	0.0

----- SITE ACCIDENT DELAYS -----	
BREAKDOWN DURATION (MINS)	0
RANGE OF QUEUE DELAY - MIN (VEH-H) MAX	0
AV BREAKDOWNS PER DAY	0
AV QUEUE DELAY/DAY (VEH-H)	0
AV TOTAL DELAY/DAY (VEH-H)	0

AVERAGE ACCIDENT NUMBERS (PIA/DAY)	
MAIN ROUTE WITHOUT WORKS	0.0388
MAIN ROUTE WITH WORKS	0.0363
'DIVERSION'	0.0042

PIA: Personal Injury Accidents

ECONOMIC IMPACT ON ROAD USERS	
ROAD USER COSTS PER DAY	\$39,507
CONGESTED HOURS PER DAY*	4

*Delays Exceeding User-Specified Maximum

IH 43: SILVER SPRING DR TO STH 190 (MILWAUKEE COUNTY)
NIGHTTIME 2 LANE CLOSURE
NO DIVERSION ROUTE (MAX QUEUE METHOD)

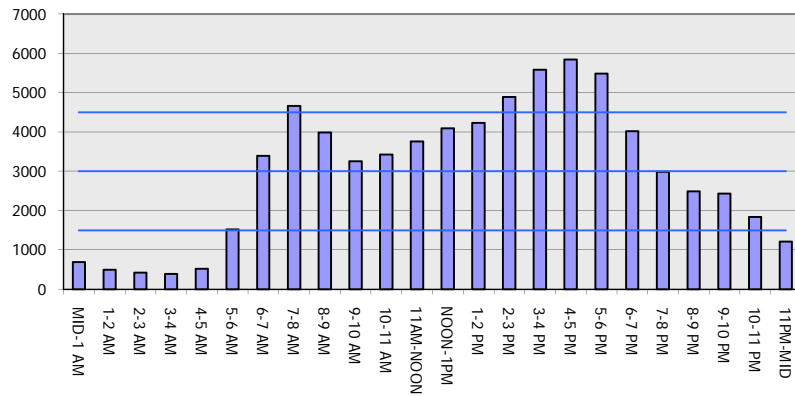
OCTOBER

Analyzed for 2009
 Construction Season

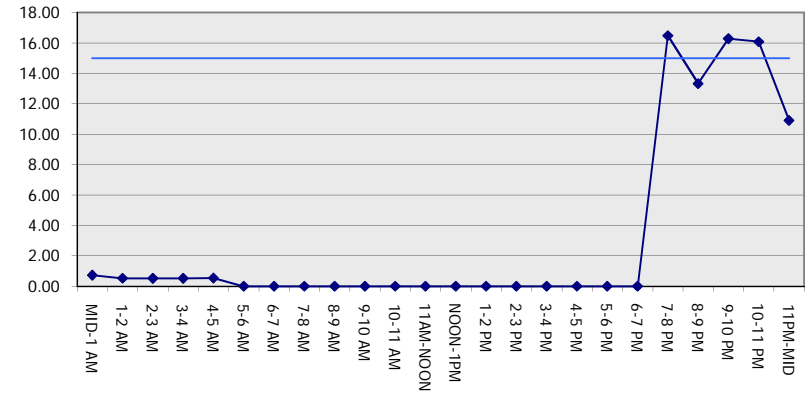
GRAPHICAL REPRESENTATION OF TRAFFIC MODEL INPUT AND OUTPUT

FRIDAY NORTHBOUND DIRECTION

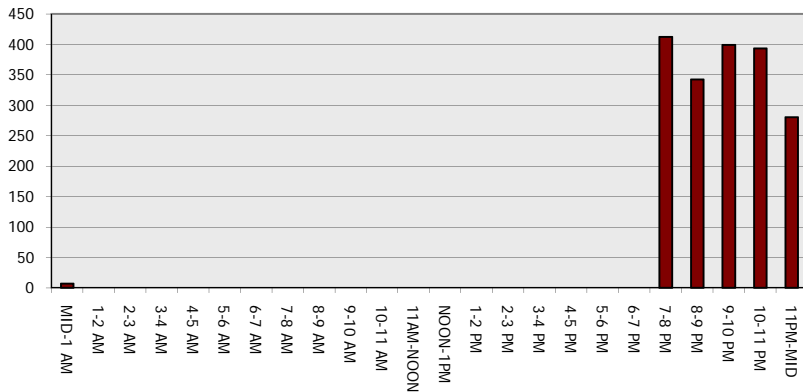
Main Route - Traffic Demand (Vehicles Per Hour)



Main Route Average Delay Per Vehicle (Minutes)



Main Route - Average Queue Length (Vehicles)



Main Route - Average Speed (MPH)

