

IH 43: SILVER SPRING DR TO STH 190 (MILWAUKEE COUNTY) NIGHTTIME CLOSURE NO DIVERSION ROUTE (MAX QUEUE METHOD)	OCTOBER
	Analyzed for 2009 Construction Season

SUMMARY OF TRAFFIC MODEL OUTPUT

FRIDAY SOUTHBOUND DIRECTION

TIME OF DAY	FLOWS AND CAPACITY IN VEH/HR						AVERAGE SPEEDS IN MPH			
	MAIN ROUTE		SITE CAPA CITY	FLOW		AV.DEL PER VEH (MINS)	AVERAGE QUEUE (VEH)	MAIN ROUTE		SITE
	DEMAND FLOW	PCT HEAVY		MAIN ROUTE	'DIVER TED'			WITHOUT WORK ZONE	WITH WORK ZONE	
MID-1 AM	441	0.0	3000	441	0	0.36	0	70.2	62.5	49.7
1-2 AM	250	0.0	3000	250	0	0.36	0	70.2	62.5	49.7
2-3 AM	210	0.0	3000	210	0	0.36	0	70.2	62.5	49.7
3-4 AM	235	0.0	3000	235	0	0.36	0	70.2	62.5	49.7
4-5 AM	517	0.0	3000	517	0	0.36	0	70.1	62.4	49.7
5-6 AM	1429	0.0	OFF	1429	0	0.00	0	68.9	68.9	68.9
6-7 AM	3727	0.0	OFF	3727	0	0.00	0	65.4	65.4	65.4
7-8 AM	5613	0.0	OFF	5613	0	0.00	0	52.5	52.5	52.5
8-9 AM	4559	0.0	OFF	4559	0	0.00	0	59.7	59.7	59.7
9-10 AM	3428	0.0	OFF	3428	0	0.00	0	66.4	66.4	66.4
10-11 AM	3232	0.0	OFF	3232	0	0.00	0	66.7	66.7	66.7
11AM-NOON	3324	0.0	OFF	3324	0	0.00	0	66.6	66.6	66.6
NOON-1PM	3542	0.0	OFF	3542	0	0.00	0	66.3	66.3	66.3
1-2 PM	3689	0.0	OFF	3689	0	0.00	0	65.6	65.6	65.6
2-3 PM	4163	0.0	OFF	4163	0	0.00	0	62.4	62.4	62.4
3-4 PM	4456	0.0	OFF	4456	0	0.00	0	60.4	60.4	60.4
4-5 PM	4561	0.0	OFF	4561	0	0.00	0	59.7	59.7	59.7
5-6 PM	4494	0.0	OFF	4494	0	0.00	0	60.2	60.2	60.2
6-7 PM	3886	0.0	OFF	3886	0	0.00	0	64.3	64.3	64.3
7-8 PM	2733	0.0	3000	2733	0	0.55	0	67.3	56.9	41.8
8-9 PM	2025	0.0	3000	2025	0	0.33	0	68.2	61.4	49.7
9-10 PM	1834	0.0	3000	1834	0	0.34	0	68.4	61.5	49.7
10-11 PM	1518	0.0	3000	1518	0	0.34	0	68.9	61.7	49.7
11PM-MID	1020	0.0	3000	1020	0	0.35	0	69.5	62.0	49.7

"OFF" INDICATES NO ROAD WORK (ALL LANES OPEN TO TRAFFIC)

----- SITE BREAKDOWN DELAYS -----	
BREAKDOWN DURATION (MINS)	0
RANGE OF QUEUE DELAY - MIN (VEH-H) MAX	0.0
AV BREAKDOWNS PER DAY	0.00
AV QUEUE DELAY/DAY (VEH-H)	0.0
AV TOTAL DELAY/DAY (VEH-H)	0.0

----- SITE ACCIDENT DELAYS -----	
BREAKDOWN DURATION (MINS)	0
RANGE OF QUEUE DELAY - MIN (VEH-H) MAX	0
AV BREAKDOWNS PER DAY	0
AV QUEUE DELAY/DAY (VEH-H)	0
AV TOTAL DELAY/DAY (VEH-H)	0

AVERAGE ACCIDENT NUMBERS (PIA/DAY)	
MAIN ROUTE WITHOUT WORKS	0.0351
MAIN ROUTE WITH WORKS	0.0344
'DIVERSION'	0.0000
<small>PIA: Personal Injury Accidents</small>	
IMPACTS ON ROAD USERS	
ROAD USER COSTS PER DAY	\$906
CONGESTED HOURS PER DAY*	0

*Delays Exceeding User-Specified Maximum

IH 43: SILVER SPRING DR TO STH 190 (MILWAUKEE COUNTY)
NIGHTTIME CLOSURE
NO DIVERSION ROUTE (MAX QUEUE METHOD)

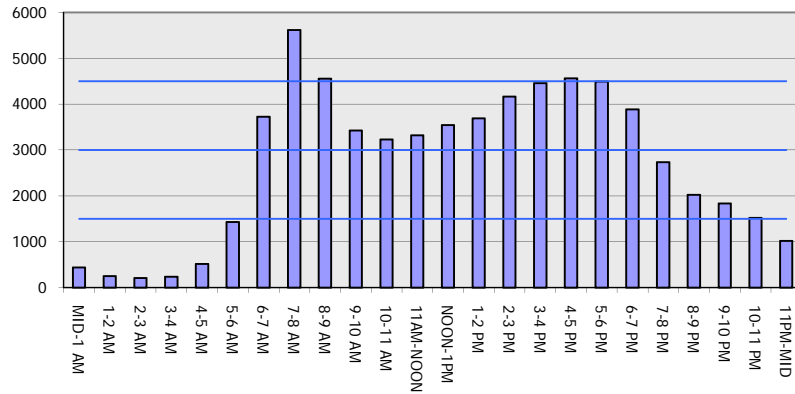
OCTOBER

Analyzed for 2009
 Construction Season

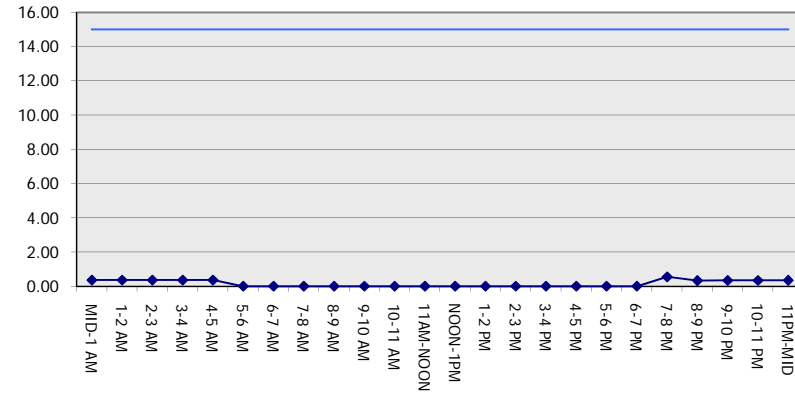
GRAPHICAL REPRESENTATION OF TRAFFIC MODEL INPUT AND OUTPUT

FRIDAY SOUTHBOUND DIRECTION

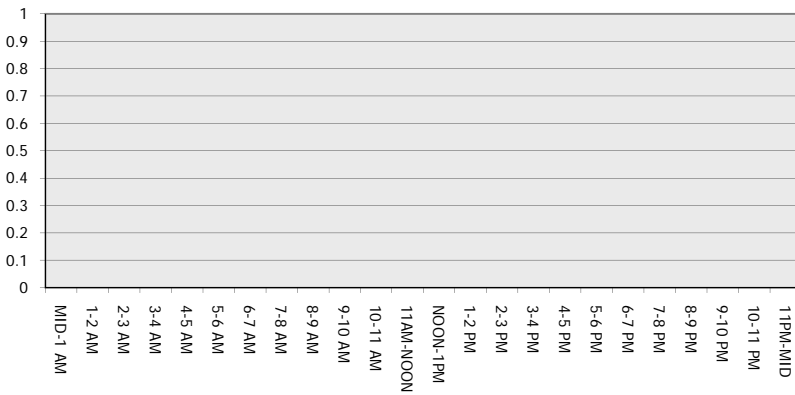
Main Route - Traffic Demand (Vehicles Per Hour)



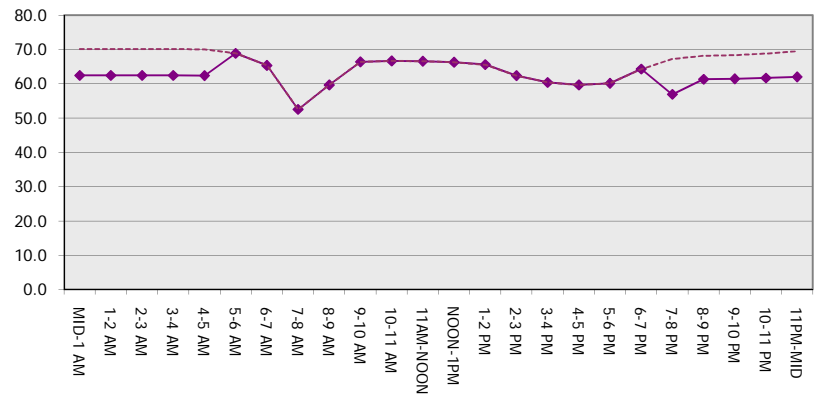
Main Route Average Delay Per Vehicle (Minutes)



Main Route - Average Queue Length (Vehicles)



Main Route - Average Speed (MPH)



IH 43: SILVER SPRING DR TO STH 190 (MILWAUKEE COUNTY) NIGHTTIME CLOSURE NO DIVERSION ROUTE (MAX QUEUE METHOD)	OCTOBER
	Analyzed for 2009 Construction Season

SUMMARY OF TRAFFIC MODEL OUTPUT

FRIDAY NORTHBOUND DIRECTION

TIME OF DAY	FLOWS AND CAPACITY IN VEH/HR							AVERAGE SPEEDS IN MPH		
	MAIN ROUTE		SITE CAPA CITY	FLOW		AV.DEL PER VEH (MINS)	AVERAGE QUEUE (VEH)	MAIN ROUTE		SITE
	DEMAND FLOW	PCT HEAVY		MAIN ROUTE	'DIVER TED'			WITHOUT WORK ZONE	WITH WORK ZONE	
MID-1 AM	695	0.0	3000	695	0	0.36	0	69.9	62.3	49.7
1-2 AM	497	0.0	3000	497	0	0.36	0	70.1	62.4	49.7
2-3 AM	424	0.0	3000	424	0	0.36	0	70.2	62.5	49.7
3-4 AM	391	0.0	3000	391	0	0.36	0	70.2	62.5	49.7
4-5 AM	523	0.0	3000	523	0	0.36	0	70.1	62.4	49.7
5-6 AM	1526	0.0	OFF	1526	0	0.00	0	68.8	68.8	68.8
6-7 AM	3395	0.0	OFF	3395	0	0.00	0	66.5	66.5	66.5
7-8 AM	4663	0.0	OFF	4663	0	0.00	0	59.0	59.0	59.0
8-9 AM	3986	0.0	OFF	3986	0	0.00	0	63.7	63.7	63.7
9-10 AM	3253	0.0	OFF	3253	0	0.00	0	66.7	66.7	66.7
10-11 AM	3428	0.0	OFF	3428	0	0.00	0	66.4	66.4	66.4
11AM-NOON	3760	0.0	OFF	3760	0	0.00	0	65.1	65.1	65.1
NOON-1PM	4097	0.0	OFF	4097	0	0.00	0	62.8	62.8	62.8
1-2 PM	4230	0.0	OFF	4230	0	0.00	0	62.0	62.0	62.0
2-3 PM	4895	0.0	OFF	4895	0	0.00	0	57.4	57.4	57.4
3-4 PM	5583	0.0	OFF	5583	0	0.00	0	52.7	52.7	52.7
4-5 PM	5842	0.0	OFF	5842	0	0.00	0	50.9	50.9	50.9
5-6 PM	5489	0.0	OFF	5489	0	0.00	0	53.3	53.3	53.3
6-7 PM	4020	0.0	OFF	4020	0	0.00	0	63.4	63.4	63.4
7-8 PM	2989	0.0	2999	2989	0	1.45	42	67.0	45.4	38.3
8-9 PM	2487	0.0	3000	2487	0	0.39	0	67.6	59.8	47.1
9-10 PM	2433	0.0	3000	2433	0	0.36	0	67.7	60.5	48.4
10-11 PM	1841	0.0	3000	1841	0	0.34	0	68.4	61.5	49.7
11PM-MID	1214	0.0	3000	1214	0	0.35	0	69.2	61.9	49.7

"OFF" INDICATES NO ROAD WORK (ALL LANES OPEN TO TRAFFIC)

----- SITE BREAKDOWN DELAYS -----	
BREAKDOWN DURATION (MINS)	0
RANGE OF QUEUE DELAY - MIN (VEH-H) MAX	0.0
AV BREAKDOWNS PER DAY	0.00
AV QUEUE DELAY/DAY (VEH-H)	0.0
AV TOTAL DELAY/DAY (VEH-H)	0.0

----- SITE ACCIDENT DELAYS -----	
BREAKDOWN DURATION (MINS)	0
RANGE OF QUEUE DELAY - MIN (VEH-H) MAX	0
AV BREAKDOWNS PER DAY	0
AV QUEUE DELAY/DAY (VEH-H)	0
AV TOTAL DELAY/DAY (VEH-H)	0

AVERAGE ACCIDENT NUMBERS (PIA/DAY)	
MAIN ROUTE WITHOUT WORKS	0.0388
MAIN ROUTE WITH WORKS	0.0379
'DIVERSION'	0.0000

PIA: Personal Injury Accidents

ECONOMIC IMPACT ON ROAD USERS	
ROAD USER COSTS PER DAY	\$1,730
CONGESTED HOURS PER DAY*	0

*Delays Exceeding User-Specified Maximum

IH 43: SILVER SPRING DR TO STH 190 (MILWAUKEE COUNTY)
NIGHTTIME CLOSURE
NO DIVERSION ROUTE (MAX QUEUE METHOD)

OCTOBER

Analyzed for 2009
 Construction Season

GRAPHICAL REPRESENTATION OF TRAFFIC MODEL INPUT AND OUTPUT

FRIDAY NORTHBOUND DIRECTION

