

IH 43: SILVER SPRING DR TO STH 190 (MILWAUKEE COUNTY) NIGHTTIME CLOSURE NO DIVERSION ROUTE (MAX QUEUE METHOD)	AUGUST
	Analyzed for 2009 Construction Season

SUMMARY OF TRAFFIC MODEL OUTPUT

SUNDAY SOUTHBOUND DIRECTION

TIME OF DAY	FLOWS AND CAPACITY IN VEH/HR						AVERAGE SPEEDS IN MPH			
	MAIN ROUTE		SITE CAPA CITY	FLOW		AV.DEL PER VEH (MINS)	AVERAGE QUEUE (VEH)	MAIN ROUTE		SITE
	DEMAND FLOW	PCT HEAVY		MAIN ROUTE	'DIVER TED'			WITHOUT WORK ZONE	WITH WORK ZONE	
MID-1 AM	1046	0.0	3000	1046	0	0.35	0	69.4	62.0	49.7
1-2 AM	565	0.0	3000	565	0	0.36	0	70.0	62.3	49.7
2-3 AM	269	0.0	3000	269	0	0.36	0	70.2	62.5	49.7
3-4 AM	205	0.0	3000	205	0	0.36	0	70.2	62.5	49.7
4-5 AM	240	0.0	3000	240	0	0.36	0	70.2	62.5	49.7
5-6 AM	397	0.0	3000	397	0	0.36	0	70.2	62.5	49.7
6-7 AM	690	0.0	3000	690	0	0.36	0	69.9	62.3	49.7
7-8 AM	979	0.0	3000	979	0	0.35	0	69.5	62.1	49.7
8-9 AM	1437	0.0	3000	1437	0	0.34	0	68.9	61.8	49.7
9-10 AM	2311	0.0	OFF	2311	0	0.00	0	67.9	67.9	67.9
10-11 AM	2987	0.0	OFF	2987	0	0.00	0	67.0	67.0	67.0
11AM-NOON	3359	0.0	OFF	3359	0	0.00	0	66.6	66.6	66.6
NOON-1PM	3768	0.0	OFF	3768	0	0.00	0	65.1	65.1	65.1
1-2 PM	3663	0.0	OFF	3663	0	0.00	0	65.8	65.8	65.8
2-3 PM	3832	0.0	OFF	3832	0	0.00	0	64.6	64.6	64.6
3-4 PM	3721	0.0	OFF	3721	0	0.00	0	65.5	65.5	65.5
4-5 PM	3743	0.0	OFF	3743	0	0.00	0	65.3	65.3	65.3
5-6 PM	3302	0.0	OFF	3302	0	0.00	0	66.6	66.6	66.6
6-7 PM	3201	0.0	OFF	3201	0	0.00	0	66.8	66.8	66.8
7-8 PM	2487	0.0	3000	2487	0	0.39	0	67.6	59.8	47.1
8-9 PM	2115	0.0	3000	2115	0	0.33	0	68.1	61.3	49.7
9-10 PM	1626	0.0	3000	1626	0	0.34	0	68.7	61.6	49.7
10-11 PM	1080	0.0	3000	1080	0	0.35	0	69.4	62.0	49.7
11PM-MID	671	0.0	3000	671	0	0.36	0	69.9	62.3	49.7

"OFF" INDICATES NO ROAD WORK (ALL LANES OPEN TO TRAFFIC)

----- SITE BREAKDOWN DELAYS -----	
BREAKDOWN DURATION (MINS)	0
RANGE OF QUEUE DELAY - MIN (VEH-H) MAX	0.0
AV BREAKDOWNS PER DAY	0.00
AV QUEUE DELAY/DAY (VEH-H)	0.0
AV TOTAL DELAY/DAY (VEH-H)	0.0

----- SITE ACCIDENT DELAYS -----	
BREAKDOWN DURATION (MINS)	0
RANGE OF QUEUE DELAY - MIN (VEH-H) MAX	0
AV BREAKDOWNS PER DAY	0
AV QUEUE DELAY/DAY (VEH-H)	0
AV TOTAL DELAY/DAY (VEH-H)	0

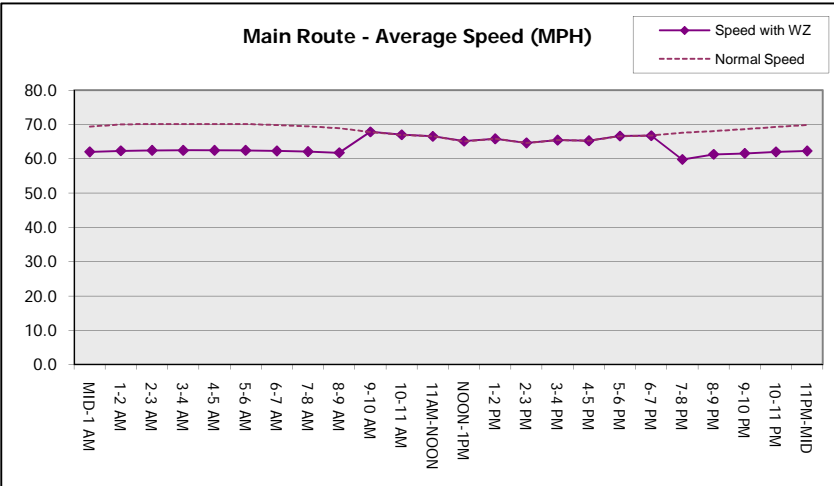
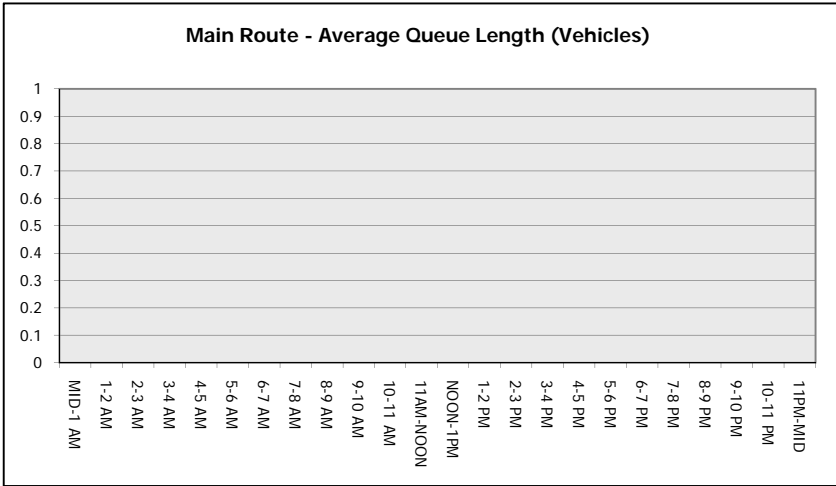
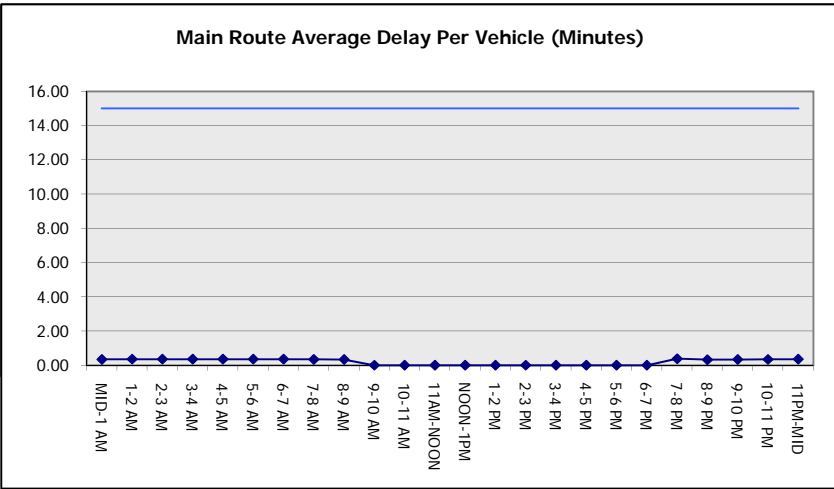
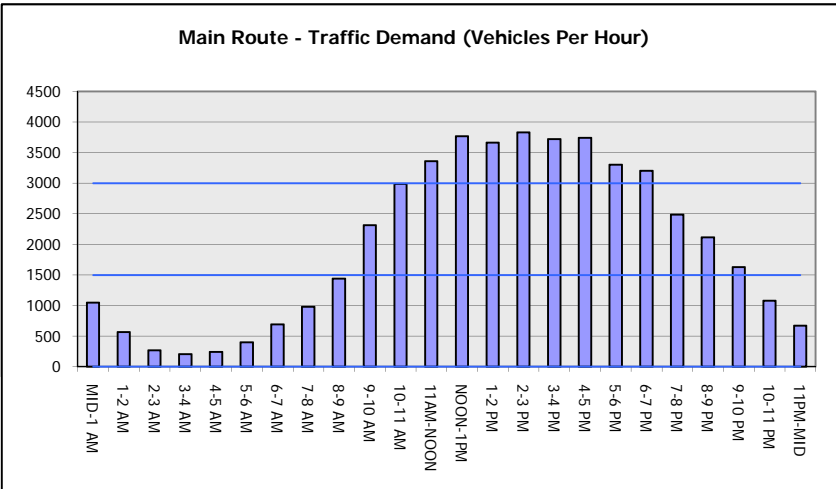
AVERAGE ACCIDENT NUMBERS (PIA/DAY)	
MAIN ROUTE WITHOUT WORKS	0.0258
MAIN ROUTE WITH WORKS	0.0249
'DIVERSION'	0.0000
<small>PIA: Personal Injury Accidents</small>	
IMPACTS ON ROAD USERS	
ROAD USER COSTS PER DAY	\$1,110
CONGESTED HOURS PER DAY*	0

*Delays Exceeding User-Specified Maximum

IH 43: SILVER SPRING DR TO STH 190 (MILWAUKEE COUNTY)
NIGHTTIME CLOSURE
NO DIVERSION ROUTE (MAX QUEUE METHOD)

AUGUST
 Analyzed for 2009
 Construction Season

GRAPHICAL REPRESENTATION OF TRAFFIC MODEL INPUT AND OUTPUT
SUNDAY SOUTHBOUND DIRECTION



IH 43: SILVER SPRING DR TO STH 190 (MILWAUKEE COUNTY) NIGHTTIME CLOSURE NO DIVERSION ROUTE (MAX QUEUE METHOD)	AUGUST
	Analyzed for 2009 Construction Season

SUMMARY OF TRAFFIC MODEL OUTPUT

SUNDAY NORTHBOUND DIRECTION

TIME OF DAY	FLOWS AND CAPACITY IN VEH/HR							AVERAGE SPEEDS IN MPH		
	MAIN ROUTE		SITE CAPA CITY	FLOW		AV.DEL PER VEH (MINS)	AVERAGE QUEUE (VEH)	MAIN ROUTE		SITE
	DEMAND FLOW	PCT HEAVY		MAIN ROUTE	'DIVER TED'			WITHOUT WORK ZONE	WITH WORK ZONE	
MID-1 AM	1142	0.0	3000	1142	0	0.35	0	69.3	62.0	49.7
1-2 AM	728	0.0	3000	728	0	0.35	0	69.8	62.3	49.7
2-3 AM	686	0.0	3000	686	0	0.36	0	69.9	62.3	49.7
3-4 AM	346	0.0	3000	346	0	0.36	0	70.2	62.5	49.7
4-5 AM	254	0.0	3000	254	0	0.36	0	70.2	62.5	49.7
5-6 AM	386	0.0	3000	386	0	0.36	0	70.2	62.5	49.7
6-7 AM	598	0.0	3000	598	0	0.36	0	70.0	62.3	49.7
7-8 AM	838	0.0	3000	838	0	0.35	0	69.7	62.2	49.7
8-9 AM	1181	0.0	3000	1181	0	0.35	0	69.2	61.9	49.7
9-10 AM	1707	0.0	OFF	1707	0	0.00	0	68.6	68.6	68.6
10-11 AM	2229	0.0	OFF	2229	0	0.00	0	67.9	67.9	67.9
11AM-NOON	2735	0.0	OFF	2735	0	0.00	0	67.3	67.3	67.3
NOON-1PM	2957	0.0	OFF	2957	0	0.00	0	67.1	67.1	67.1
1-2 PM	3243	0.0	OFF	3243	0	0.00	0	66.7	66.7	66.7
2-3 PM	3029	0.0	OFF	3029	0	0.00	0	66.9	66.9	66.9
3-4 PM	3181	0.0	OFF	3181	0	0.00	0	66.8	66.8	66.8
4-5 PM	3108	0.0	OFF	3108	0	0.00	0	66.9	66.9	66.9
5-6 PM	2881	0.0	OFF	2881	0	0.00	0	67.1	67.1	67.1
6-7 PM	2621	0.0	OFF	2621	0	0.00	0	67.5	67.5	67.5
7-8 PM	2239	0.0	3000	2239	0	0.33	0	67.9	61.2	49.7
8-9 PM	1935	0.0	3000	1935	0	0.34	0	68.3	61.4	49.7
9-10 PM	1797	0.0	3000	1797	0	0.34	0	68.5	61.5	49.7
10-11 PM	1426	0.0	3000	1426	0	0.34	0	68.9	61.8	49.7
11PM-MID	996	0.0	3000	996	0	0.35	0	69.5	62.1	49.7

"OFF" INDICATES NO ROAD WORK (ALL LANES OPEN TO TRAFFIC)

----- SITE BREAKDOWN DELAYS -----	
BREAKDOWN DURATION (MINS)	0
RANGE OF QUEUE DELAY - MIN (VEH-H) MAX	0.0
AV BREAKDOWNS PER DAY	0.00
AV QUEUE DELAY/DAY (VEH-H)	0.0
AV TOTAL DELAY/DAY (VEH-H)	0.0

----- SITE ACCIDENT DELAYS -----	
BREAKDOWN DURATION (MINS)	0
RANGE OF QUEUE DELAY - MIN (VEH-H) MAX	0
AV BREAKDOWNS PER DAY	0
AV QUEUE DELAY/DAY (VEH-H)	0
AV TOTAL DELAY/DAY (VEH-H)	0

AVERAGE ACCIDENT NUMBERS (PIA/DAY)	
MAIN ROUTE WITHOUT WORKS	0.0228
MAIN ROUTE WITH WORKS	0.0219
'DIVERSION'	0.0000

PIA: Personal Injury Accidents

ECONOMIC IMPACT ON ROAD USERS	
ROAD USER COSTS PER DAY	\$1,140
CONGESTED HOURS PER DAY*	0

*Delays Exceeding User-Specified Maximum

IH 43: SILVER SPRING DR TO STH 190 (MILWAUKEE COUNTY)
NIGHTTIME CLOSURE
NO DIVERSION ROUTE (MAX QUEUE METHOD)

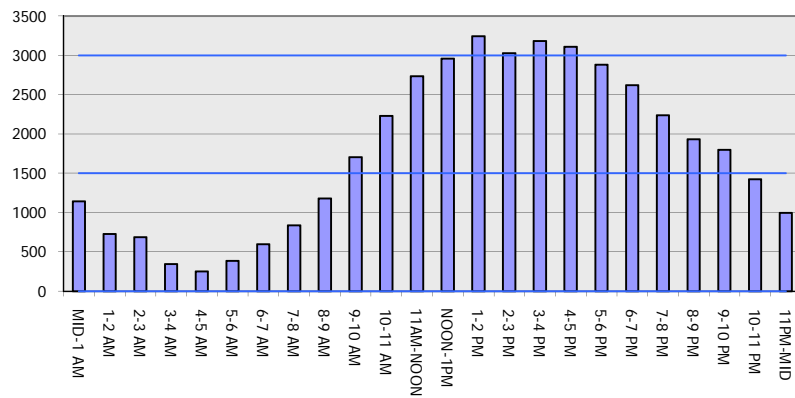
AUGUST

Analyzed for 2009
 Construction Season

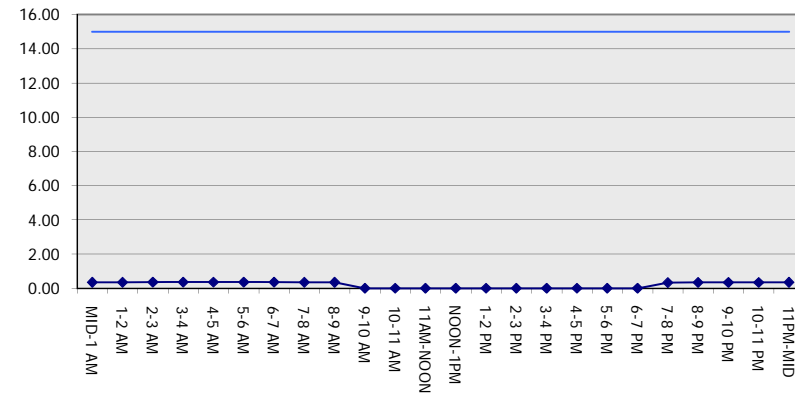
GRAPHICAL REPRESENTATION OF TRAFFIC MODEL INPUT AND OUTPUT

SUNDAY NORTHBOUND DIRECTION

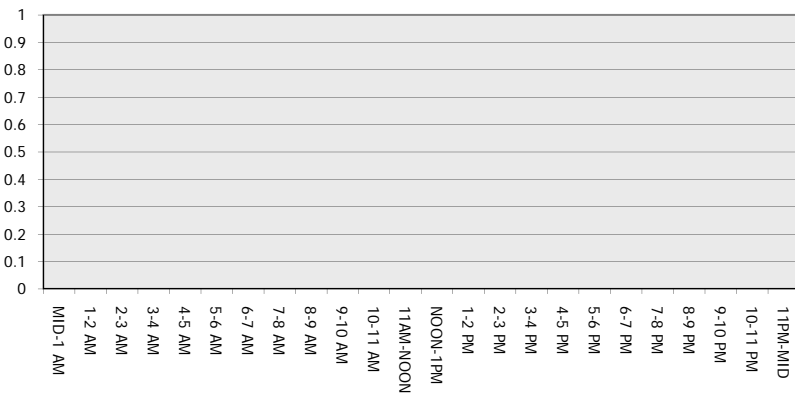
Main Route - Traffic Demand (Vehicles Per Hour)



Main Route Average Delay Per Vehicle (Minutes)



Main Route - Average Queue Length (Vehicles)



Main Route - Average Speed (MPH)

