

IH 794: LINCOLN AVE TO LINCOLN MEMORIAL DR (MILWAUKEE COUNTY) NIGHTTIME 2 LANE CLOSURE NO DIVERSION ROUTE (MAX QUEUE METHOD)	OCTOBER
	Analyzed for 2009 Construction Season

SUMMARY OF TRAFFIC MODEL OUTPUT

MON-THUR WESTBOUND DIRECTION

TIME OF DAY	FLOWS AND CAPACITY IN VEH/HR						AVERAGE SPEEDS IN MPH				
	MAIN ROUTE		SITE CAPA CITY	FLOW		AV.DEL PER VEH (MINS)	AVERAGE QUEUE (VEH)	MAIN ROUTE		SITE	
	DEMAND FLOW	PCT HEAVY		MAIN ROUTE	'DIVER TED'			WITHOUT WORK ZONE	WITH WORK ZONE		
MID-1 AM	132	0.0	1500	132	0	0.49	0	70.2	54.6	45.0	
1-2 AM	68	0.0	1500	68	0	0.48	0	70.2	54.8	45.2	
2-3 AM	68	0.0	1500	68	0	0.48	0	70.2	54.8	45.2	
3-4 AM	77	0.0	1500	77	0	0.48	0	70.2	54.8	45.2	
4-5 AM	175	0.0	1500	175	0	0.49	0	70.2	54.5	44.8	
5-6 AM	857	0.0	OFF	857	0	0.00	0	69.7	69.7	69.7	
6-7 AM	2286	0.0	OFF	2286	0	0.00	0	67.9	67.9	67.9	
7-8 AM	3992	0.0	OFF	3992	0	0.00	0	63.6	63.6	63.6	
8-9 AM	3013	0.0	OFF	3013	0	0.00	0	67.0	67.0	67.0	
9-10 AM	1324	0.0	OFF	1324	0	0.00	0	69.1	69.1	69.1	
10-11 AM	1007	0.0	OFF	1007	0	0.00	0	69.5	69.5	69.5	
11AM-NOON	930	0.0	OFF	930	0	0.00	0	69.6	69.6	69.6	
NOON-1PM	987	0.0	OFF	987	0	0.00	0	69.5	69.5	69.5	
1-2 PM	1028	0.0	OFF	1028	0	0.00	0	69.4	69.4	69.4	
2-3 PM	1138	0.0	OFF	1138	0	0.00	0	69.3	69.3	69.3	
3-4 PM	1284	0.0	OFF	1284	0	0.00	0	69.1	69.1	69.1	
4-5 PM	1307	0.0	OFF	1307	0	0.00	0	69.1	69.1	69.1	
5-6 PM	1236	0.0	OFF	1236	0	0.00	0	69.2	69.2	69.2	
6-7 PM	1001	0.0	OFF	1001	0	0.00	0	69.5	69.5	69.5	
7-8 PM	686	0.0	1500	686	0	0.55	0	69.9	52.8	42.8	
8-9 PM	540	0.0	1500	540	0	0.54	0	70.0	53.3	43.3	
9-10 PM	500	0.0	1500	500	0	0.53	0	70.1	53.5	43.5	
10-11 PM	386	0.0	1500	386	0	0.52	0	70.2	53.8	44.0	
11PM-MID	252	0.0	1500	252	0	0.50	0	70.2	54.2	44.5	

"OFF" INDICATES NO ROAD WORK (ALL LANES OPEN TO TRAFFIC)

----- SITE BREAKDOWN DELAYS -----	
BREAKDOWN DURATION (MINS)	0
RANGE OF QUEUE DELAY - MIN (VEH-H) MAX	0.0
AV BREAKDOWNS PER DAY	0.00
AV QUEUE DELAY/DAY (VEH-H)	0.0
AV TOTAL DELAY/DAY (VEH-H)	0.0

----- SITE ACCIDENT DELAYS -----	
BREAKDOWN DURATION (MINS)	0
RANGE OF QUEUE DELAY - MIN (VEH-H) MAX	0
AV BREAKDOWNS PER DAY	0
AV QUEUE DELAY/DAY (VEH-H)	0
AV TOTAL DELAY/DAY (VEH-H)	0

AVERAGE ACCIDENT NUMBERS (PIA/DAY)	
MAIN ROUTE WITHOUT WORKS	0.0077
MAIN ROUTE WITH WORKS	0.0075
'DIVERSION'	0.0000
<small>PIA: Personal Injury Accidents</small>	
IMPACTS ON ROAD USERS	
ROAD USER COSTS PER DAY	\$315
CONGESTED HOURS PER DAY*	0

*Delays Exceeding User-Specified Maximum

IH 794: LINCOLN AVE TO LINCOLN MEMORIAL DR (MILWAUKEE COUNTY)
NIGHTTIME 2 LANE CLOSURE
NO DIVERSION ROUTE (MAX QUEUE METHOD)

OCTOBER

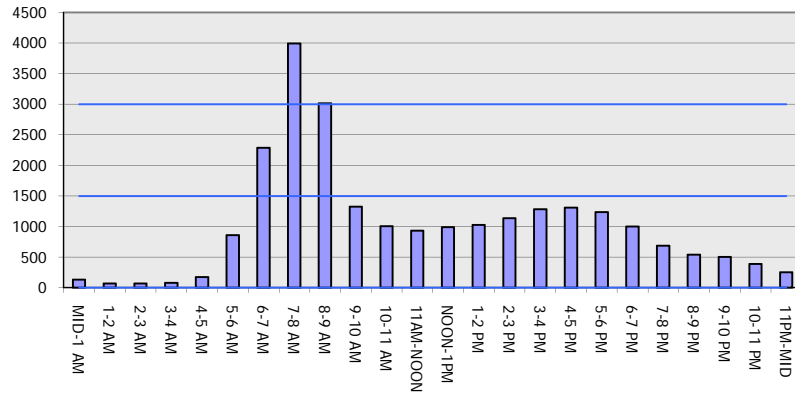
Analyzed for 2009
 Construction Season

GRAPHICAL REPRESENTATION OF TRAFFIC MODEL INPUT AND OUTPUT

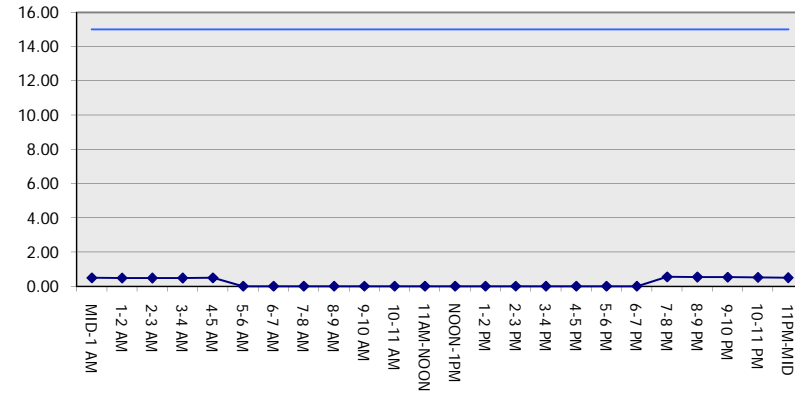
MON-THUR

WESTBOUND DIRECTION

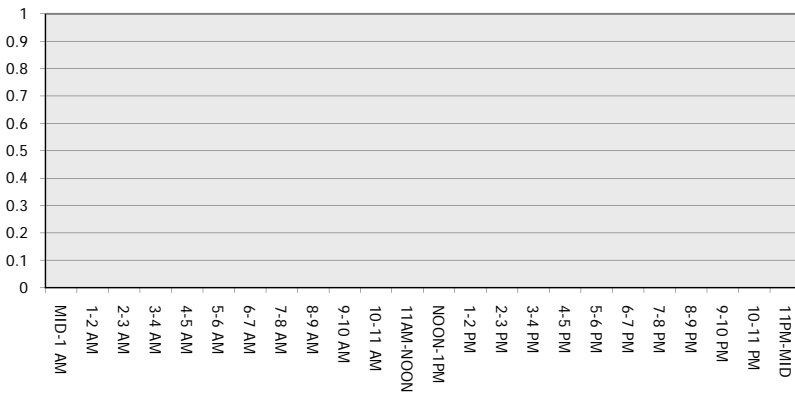
Main Route - Traffic Demand (Vehicles Per Hour)



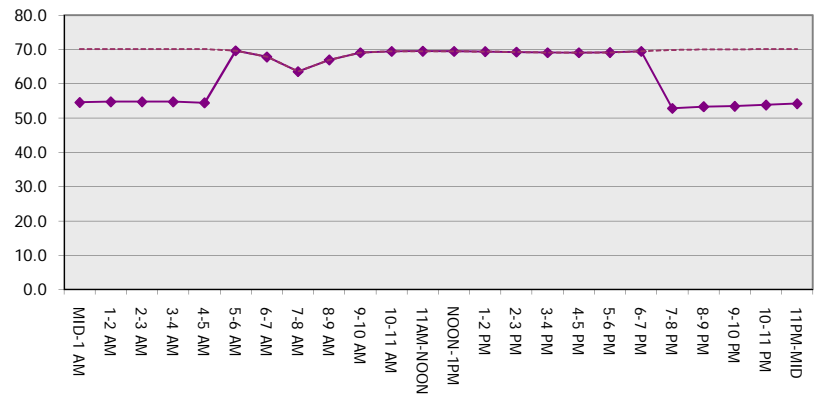
Main Route Average Delay Per Vehicle (Minutes)



Main Route - Average Queue Length (Vehicles)



Main Route - Average Speed (MPH)



IH 794: LINCOLN AVE TO LINCOLN MEMORIAL DR (MILWAUKEE COUNTY) NIGHTTIME 2 LANE CLOSURE NO DIVERSION ROUTE (MAX QUEUE METHOD)	OCTOBER
	Analyzed for 2009 Construction Season

SUMMARY OF TRAFFIC MODEL OUTPUT

MON-THUR EASTBOUND DIRECTION

TIME OF DAY	FLOWS AND CAPACITY IN VEH/HR						AVERAGE SPEEDS IN MPH			
	MAIN ROUTE		SITE CAPA CITY	FLOW		AV.DEL PER VEH (MINS)	AVERAGE QUEUE (VEH)	MAIN ROUTE		SITE
	DEMAND FLOW	PCT HEAVY		MAIN ROUTE	'DIVER TED'			WITHOUT WORK ZONE	WITH WORK ZONE	
MID-1 AM	206	0.0	1500	206	0	0.50	0	70.2	54.3	44.6
1-2 AM	133	0.0	1500	133	0	0.49	0	70.2	54.6	45.0
2-3 AM	107	0.0	1500	107	0	0.49	0	70.2	54.6	45.1
3-4 AM	84	0.0	1500	84	0	0.48	0	70.2	54.7	45.1
4-5 AM	120	0.0	1500	120	0	0.49	0	70.2	54.6	45.0
5-6 AM	306	0.0	OFF	306	0	0.00	0	70.2	70.2	70.2
6-7 AM	695	0.0	OFF	695	0	0.00	0	69.9	69.9	69.9
7-8 AM	1043	0.0	OFF	1043	0	0.00	0	69.4	69.4	69.4
8-9 AM	819	0.0	OFF	819	0	0.00	0	69.7	69.7	69.7
9-10 AM	689	0.0	OFF	689	0	0.00	0	69.9	69.9	69.9
10-11 AM	745	0.0	OFF	745	0	0.00	0	69.8	69.8	69.8
11AM-NOON	948	0.0	OFF	948	0	0.00	0	69.6	69.6	69.6
NOON-1PM	1102	0.0	OFF	1102	0	0.00	0	69.4	69.4	69.4
1-2 PM	1111	0.0	OFF	1111	0	0.00	0	69.4	69.4	69.4
2-3 PM	1670	0.0	OFF	1670	0	0.00	0	68.7	68.7	68.7
3-4 PM	2377	0.0	OFF	2377	0	0.00	0	67.8	67.8	67.8
4-5 PM	3129	0.0	OFF	3129	0	0.00	0	66.8	66.8	66.8
5-6 PM	3444	0.0	OFF	3444	0	0.00	0	66.4	66.4	66.4
6-7 PM	1737	0.0	OFF	1737	0	0.00	0	68.6	68.6	68.6
7-8 PM	1167	0.0	1500	1167	0	0.66	0	69.3	50.1	39.6
8-9 PM	956	0.0	1500	956	0	0.58	0	69.6	52.0	41.9
9-10 PM	792	0.0	1500	792	0	0.56	0	69.7	52.5	42.4
10-11 PM	665	0.0	1500	665	0	0.55	0	69.9	52.9	42.9
11PM-MID	501	0.0	1500	501	0	0.53	0	70.1	53.5	43.5

"OFF" INDICATES NO ROAD WORK (ALL LANES OPEN TO TRAFFIC)

----- SITE BREAKDOWN DELAYS -----	
BREAKDOWN DURATION (MINS)	0
RANGE OF QUEUE DELAY - MIN	0.0
(VEH-H) MAX	0.0
AV BREAKDOWNS PER DAY	0.00
AV QUEUE DELAY/DAY (VEH-H)	0.0
AV TOTAL DELAY/DAY (VEH-H)	0.0

----- SITE ACCIDENT DELAYS -----	
BREAKDOWN DURATION (MINS)	0
RANGE OF QUEUE DELAY - MIN	0
(VEH-H) MAX	0
AV BREAKDOWNS PER DAY	0
AV QUEUE DELAY/DAY (VEH-H)	0
AV TOTAL DELAY/DAY (VEH-H)	0

AVERAGE ACCIDENT NUMBERS (PIA/DAY)	
MAIN ROUTE WITHOUT WORKS	0.0078
MAIN ROUTE WITH WORKS	0.0075
'DIVERSION'	0.0000

PIA: Personal Injury Accidents

ECONOMIC IMPACT ON ROAD USERS	
ROAD USER COSTS PER DAY	\$566
CONGESTED HOURS PER DAY*	0

*Delays Exceeding User-Specified Maximum

IH 794: LINCOLN AVE TO LINCOLN MEMORIAL DR (MILWAUKEE COUNTY)
NIGHTTIME 2 LANE CLOSURE
NO DIVERSION ROUTE (MAX QUEUE METHOD)

OCTOBER

Analyzed for 2009
 Construction Season

GRAPHICAL REPRESENTATION OF TRAFFIC MODEL INPUT AND OUTPUT
MON-THUR EASTBOUND DIRECTION

