

IH 794: LINCOLN AVE TO LINCOLN MEMORIAL DR (MILWAUKEE COUNTY) NIGHTTIME 2 LANE CLOSURE NO DIVERSION ROUTE (MAX QUEUE METHOD)	OCTOBER
	Analyzed for 2009 Construction Season

SUMMARY OF TRAFFIC MODEL OUTPUT

FRIDAY WESTBOUND DIRECTION

TIME OF DAY	FLOWS AND CAPACITY IN VEH/HR						AVERAGE SPEEDS IN MPH			
	MAIN ROUTE		SITE CAPA CITY	FLOW		AV.DEL PER VEH (MINS)	AVERAGE QUEUE (VEH)	MAIN ROUTE		SITE
	DEMAND FLOW	PCT HEAVY		MAIN ROUTE	'DIVER TED'			WITHOUT WORK ZONE	WITH WORK ZONE	
MID-1 AM	178	0.0	1500	178	0	0.49	0	70.2	54.5	44.8
1-2 AM	108	0.0	1500	108	0	0.49	0	70.2	54.6	45.1
2-3 AM	90	0.0	1500	90	0	0.48	0	70.2	54.7	45.1
3-4 AM	81	0.0	1500	81	0	0.48	0	70.2	54.7	45.1
4-5 AM	175	0.0	1500	175	0	0.49	0	70.2	54.5	44.8
5-6 AM	827	0.0	OFF	827	0	0.00	0	69.7	69.7	69.7
6-7 AM	2315	0.0	OFF	2315	0	0.00	0	67.9	67.9	67.9
7-8 AM	3759	0.0	OFF	3759	0	0.00	0	65.2	65.2	65.2
8-9 AM	2726	0.0	OFF	2726	0	0.00	0	67.3	67.3	67.3
9-10 AM	1386	0.0	OFF	1386	0	0.00	0	69.0	69.0	69.0
10-11 AM	1091	0.0	OFF	1091	0	0.00	0	69.4	69.4	69.4
11AM-NOON	1074	0.0	OFF	1074	0	0.00	0	69.4	69.4	69.4
NOON-1PM	1118	0.0	OFF	1118	0	0.00	0	69.4	69.4	69.4
1-2 PM	1169	0.0	OFF	1169	0	0.00	0	69.3	69.3	69.3
2-3 PM	1237	0.0	OFF	1237	0	0.00	0	69.2	69.2	69.2
3-4 PM	1332	0.0	OFF	1332	0	0.00	0	69.1	69.1	69.1
4-5 PM	1412	0.0	OFF	1412	0	0.00	0	69.0	69.0	69.0
5-6 PM	1364	0.0	OFF	1364	0	0.00	0	69.1	69.1	69.1
6-7 PM	1152	0.0	OFF	1152	0	0.00	0	69.3	69.3	69.3
7-8 PM	859	0.0	1500	859	0	0.57	0	69.7	52.3	42.2
8-9 PM	624	0.0	1500	624	0	0.55	0	70.0	53.0	43.0
9-10 PM	606	0.0	1500	606	0	0.54	0	70.0	53.1	43.1
10-11 PM	583	0.0	1500	583	0	0.54	0	70.0	53.2	43.2
11PM-MID	378	0.0	1500	378	0	0.52	0	70.2	53.8	44.0

"OFF" INDICATES NO ROAD WORK (ALL LANES OPEN TO TRAFFIC)

----- SITE BREAKDOWN DELAYS -----	
BREAKDOWN DURATION (MINS)	0
RANGE OF QUEUE DELAY - MIN (VEH-H) MAX	0.0
AV BREAKDOWNS PER DAY	0.00
AV QUEUE DELAY/DAY (VEH-H)	0.0
AV TOTAL DELAY/DAY (VEH-H)	0.0

----- SITE ACCIDENT DELAYS -----	
BREAKDOWN DURATION (MINS)	0
RANGE OF QUEUE DELAY - MIN (VEH-H) MAX	0
AV BREAKDOWNS PER DAY	0
AV QUEUE DELAY/DAY (VEH-H)	0
AV TOTAL DELAY/DAY (VEH-H)	0

AVERAGE ACCIDENT NUMBERS (PIA/DAY)	
MAIN ROUTE WITHOUT WORKS	0.0082
MAIN ROUTE WITH WORKS	0.0079
'DIVERSION'	0.0000
PIA: Personal Injury Accidents	
IMPACTS ON ROAD USERS	
ROAD USER COSTS PER DAY	\$419
CONGESTED HOURS PER DAY*	0

*Delays Exceeding User-Specified Maximum

IH 794: LINCOLN AVE TO LINCOLN MEMORIAL DR (MILWAUKEE COUNTY)
NIGHTTIME 2 LANE CLOSURE
NO DIVERSION ROUTE (MAX QUEUE METHOD)

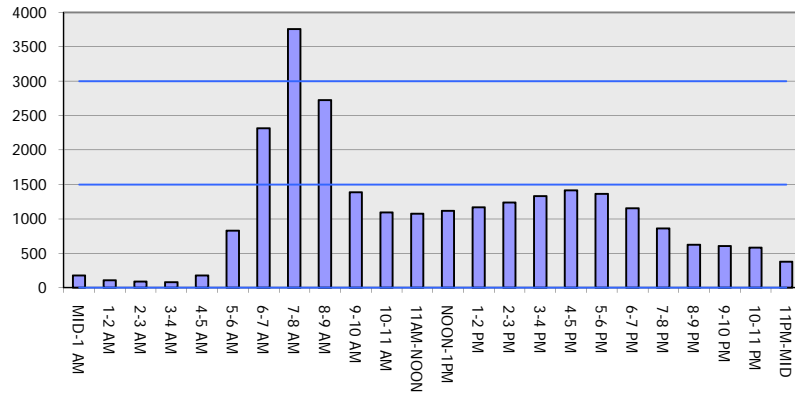
OCTOBER

Analyzed for 2009
 Construction Season

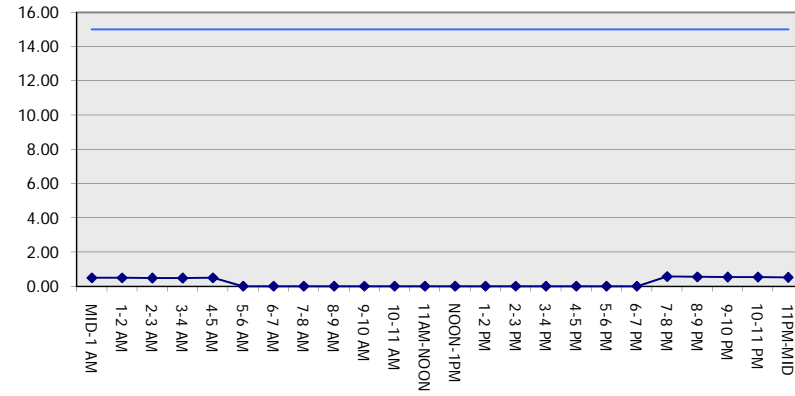
GRAPHICAL REPRESENTATION OF TRAFFIC MODEL INPUT AND OUTPUT

FRIDAY WESTBOUND DIRECTION

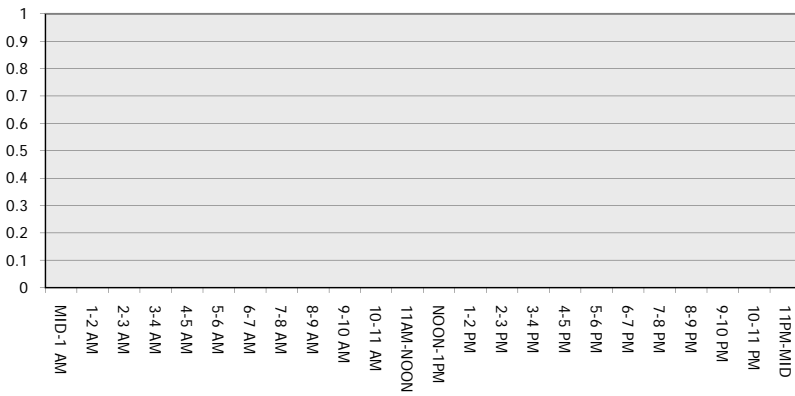
Main Route - Traffic Demand (Vehicles Per Hour)



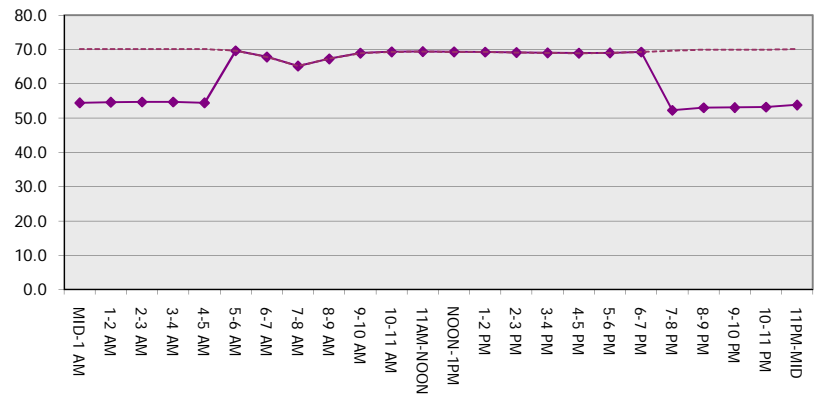
Main Route Average Delay Per Vehicle (Minutes)



Main Route - Average Queue Length (Vehicles)



Main Route - Average Speed (MPH)



IH 794: LINCOLN AVE TO LINCOLN MEMORIAL DR (MILWAUKEE COUNTY) NIGHTTIME 2 LANE CLOSURE NO DIVERSION ROUTE (MAX QUEUE METHOD)	OCTOBER
	Analyzed for 2009 Construction Season

SUMMARY OF TRAFFIC MODEL OUTPUT

FRIDAY EASTBOUND DIRECTION

TIME OF DAY	FLOWS AND CAPACITY IN VEH/HR						AVERAGE SPEEDS IN MPH			
	MAIN ROUTE		SITE CAPA CITY	FLOW		AV.DEL PER VEH (MINS)	AVERAGE QUEUE (VEH)	MAIN ROUTE		SITE
	DEMAND FLOW	PCT HEAVY		MAIN ROUTE	'DIVER TED'			WITHOUT WORK ZONE	WITH WORK ZONE	
MID-1 AM	341	0.0	1500	341	0	0.51	0	70.2	54.0	44.2
1-2 AM	224	0.0	1500	224	0	0.50	0	70.2	54.3	44.6
2-3 AM	183	0.0	1500	183	0	0.49	0	70.2	54.4	44.8
3-4 AM	122	0.0	1500	122	0	0.49	0	70.2	54.6	45.0
4-5 AM	181	0.0	1500	181	0	0.49	0	70.2	54.5	44.8
5-6 AM	331	0.0	OFF	331	0	0.00	0	70.2	70.2	70.2
6-7 AM	742	0.0	OFF	742	0	0.00	0	69.8	69.8	69.8
7-8 AM	997	0.0	OFF	997	0	0.00	0	69.5	69.5	69.5
8-9 AM	825	0.0	OFF	825	0	0.00	0	69.7	69.7	69.7
9-10 AM	725	0.0	OFF	725	0	0.00	0	69.9	69.9	69.9
10-11 AM	876	0.0	OFF	876	0	0.00	0	69.6	69.6	69.6
11AM-NOON	1038	0.0	OFF	1038	0	0.00	0	69.4	69.4	69.4
NOON-1PM	1279	0.0	OFF	1279	0	0.00	0	69.1	69.1	69.1
1-2 PM	1291	0.0	OFF	1291	0	0.00	0	69.1	69.1	69.1
2-3 PM	1794	0.0	OFF	1794	0	0.00	0	68.5	68.5	68.5
3-4 PM	2477	0.0	OFF	2477	0	0.00	0	67.6	67.6	67.6
4-5 PM	3185	0.0	OFF	3185	0	0.00	0	66.8	66.8	66.8
5-6 PM	3081	0.0	OFF	3081	0	0.00	0	66.9	66.9	66.9
6-7 PM	1488	0.0	OFF	1488	0	0.00	0	68.9	68.9	68.9
7-8 PM	997	0.0	1500	997	0	0.59	0	69.5	51.9	41.7
8-9 PM	779	0.0	1500	779	0	0.56	0	69.7	52.5	42.5
9-10 PM	811	0.0	1500	811	0	0.57	0	69.7	52.5	42.4
10-11 PM	794	0.0	1500	794	0	0.56	0	69.7	52.5	42.4
11PM-MID	633	0.0	1500	633	0	0.55	0	69.9	53.0	43.0

"OFF" INDICATES NO ROAD WORK (ALL LANES OPEN TO TRAFFIC)

----- SITE BREAKDOWN DELAYS -----	
BREAKDOWN DURATION (MINS)	0
RANGE OF QUEUE DELAY - MIN (VEH-H) MAX	0.0
AV BREAKDOWNS PER DAY	0.00
AV QUEUE DELAY/DAY (VEH-H)	0.0
AV TOTAL DELAY/DAY (VEH-H)	0.0

----- SITE ACCIDENT DELAYS -----	
BREAKDOWN DURATION (MINS)	0
RANGE OF QUEUE DELAY - MIN (VEH-H) MAX	0
AV BREAKDOWNS PER DAY	0
AV QUEUE DELAY/DAY (VEH-H)	0
AV TOTAL DELAY/DAY (VEH-H)	0

AVERAGE ACCIDENT NUMBERS (PIA/DAY)	
MAIN ROUTE WITHOUT WORKS	0.0080
MAIN ROUTE WITH WORKS	0.0077
'DIVERSION'	0.0000

PIA: Personal Injury Accidents

ECONOMIC IMPACT ON ROAD USERS	
ROAD USER COSTS PER DAY	\$594
CONGESTED HOURS PER DAY*	0

*Delays Exceeding User-Specified Maximum

IH 794: LINCOLN AVE TO LINCOLN MEMORIAL DR (MILWAUKEE COUNTY)
NIGHTTIME 2 LANE CLOSURE
NO DIVERSION ROUTE (MAX QUEUE METHOD)

OCTOBER

Analyzed for 2009
 Construction Season

GRAPHICAL REPRESENTATION OF TRAFFIC MODEL INPUT AND OUTPUT
FRIDAY EASTBOUND DIRECTION

