

IH 794: LINCOLN AVE TO LINCOLN MEMORIAL DR (MILWAUKEE COUNTY) NIGHTTIME 2 LANE CLOSURE NO DIVERSION ROUTE (MAX QUEUE METHOD)	AUGUST
	Analyzed for 2009 Construction Season

SUMMARY OF TRAFFIC MODEL OUTPUT

MON-THUR WESTBOUND DIRECTION

TIME OF DAY	FLOWS AND CAPACITY IN VEH/HR						AVERAGE SPEEDS IN MPH			
	MAIN ROUTE		SITE CAPA CITY	FLOW		AV.DEL PER VEH (MINS)	AVERAGE QUEUE (VEH)	MAIN ROUTE		SITE
	DEMAND FLOW	PCT HEAVY		MAIN ROUTE	'DIVER TED'			WITHOUT WORK ZONE	WITH WORK ZONE	
MID-1 AM	167	0.0	1500	167	0	0.49	0	70.2	54.5	44.8
1-2 AM	97	0.0	1500	97	0	0.48	0	70.2	54.7	45.1
2-3 AM	84	0.0	1500	84	0	0.48	0	70.2	54.7	45.1
3-4 AM	86	0.0	1500	86	0	0.48	0	70.2	54.7	45.1
4-5 AM	188	0.0	1500	188	0	0.50	0	70.2	54.4	44.7
5-6 AM	850	0.0	OFF	850	0	0.00	0	69.7	69.7	69.7
6-7 AM	2302	0.0	OFF	2302	0	0.00	0	67.9	67.9	67.9
7-8 AM	3571	0.0	OFF	3571	0	0.00	0	66.3	66.3	66.3
8-9 AM	2711	0.0	OFF	2711	0	0.00	0	67.4	67.4	67.4
9-10 AM	1319	0.0	OFF	1319	0	0.00	0	69.1	69.1	69.1
10-11 AM	1077	0.0	OFF	1077	0	0.00	0	69.4	69.4	69.4
11AM-NOON	1051	0.0	OFF	1051	0	0.00	0	69.4	69.4	69.4
NOON-1PM	1108	0.0	OFF	1108	0	0.00	0	69.4	69.4	69.4
1-2 PM	1049	0.0	OFF	1049	0	0.00	0	69.4	69.4	69.4
2-3 PM	1173	0.0	OFF	1173	0	0.00	0	69.3	69.3	69.3
3-4 PM	1203	0.0	OFF	1203	0	0.00	0	69.2	69.2	69.2
4-5 PM	1193	0.0	OFF	1193	0	0.00	0	69.2	69.2	69.2
5-6 PM	1158	0.0	OFF	1158	0	0.00	0	69.3	69.3	69.3
6-7 PM	1005	0.0	OFF	1005	0	0.00	0	69.5	69.5	69.5
7-8 PM	709	0.0	1500	709	0	0.56	0	69.9	52.8	42.7
8-9 PM	646	0.0	1500	646	0	0.55	0	69.9	53.0	43.0
9-10 PM	606	0.0	1500	606	0	0.54	0	70.0	53.1	43.1
10-11 PM	452	0.0	1500	452	0	0.53	0	70.2	53.6	43.7
11PM-MID	284	0.0	1500	284	0	0.51	0	70.2	54.2	44.3

"OFF" INDICATES NO ROAD WORK (ALL LANES OPEN TO TRAFFIC)

----- SITE BREAKDOWN DELAYS -----	
BREAKDOWN DURATION (MINS)	0
RANGE OF QUEUE DELAY - MIN (VEH-H) MAX	0.0
AV BREAKDOWNS PER DAY	0.00
AV QUEUE DELAY/DAY (VEH-H)	0.0
AV TOTAL DELAY/DAY (VEH-H)	0.0

----- SITE ACCIDENT DELAYS -----	
BREAKDOWN DURATION (MINS)	0
RANGE OF QUEUE DELAY - MIN (VEH-H) MAX	0
AV BREAKDOWNS PER DAY	0
AV QUEUE DELAY/DAY (VEH-H)	0
AV TOTAL DELAY/DAY (VEH-H)	0

AVERAGE ACCIDENT NUMBERS (PIA/DAY)	
MAIN ROUTE WITHOUT WORKS	0.0077
MAIN ROUTE WITH WORKS	0.0075
'DIVERSION'	0.0000
PIA: Personal Injury Accidents	
IMPACTS ON ROAD USERS	
ROAD USER COSTS PER DAY	\$364
CONGESTED HOURS PER DAY*	0

*Delays Exceeding User-Specified Maximum

IH 794: LINCOLN AVE TO LINCOLN MEMORIAL DR (MILWAUKEE COUNTY)
NIGHTTIME 2 LANE CLOSURE
NO DIVERSION ROUTE (MAX QUEUE METHOD)

AUGUST

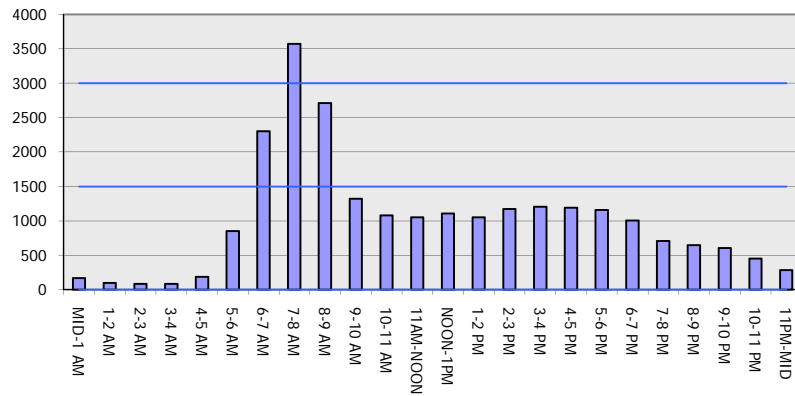
Analyzed for 2009
 Construction Season

GRAPHICAL REPRESENTATION OF TRAFFIC MODEL INPUT AND OUTPUT

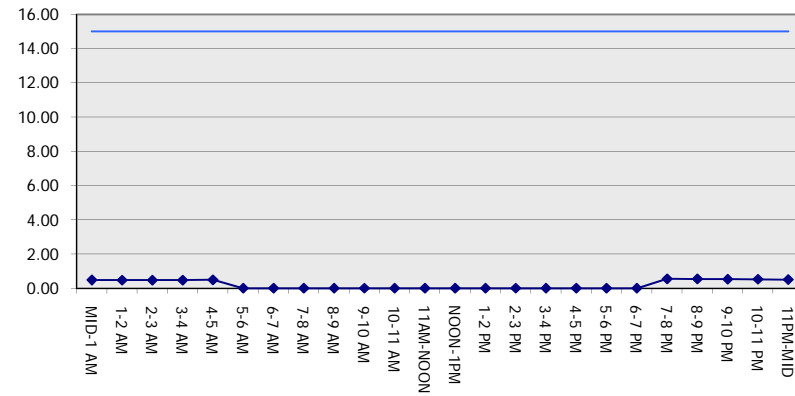
MON-THUR

WESTBOUND DIRECTION

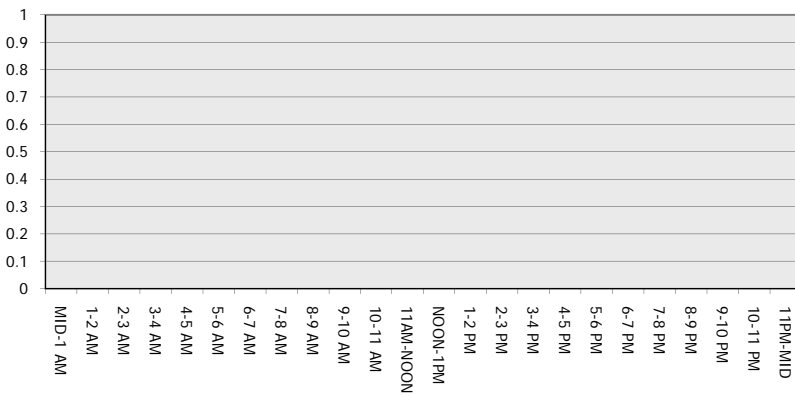
Main Route - Traffic Demand (Vehicles Per Hour)



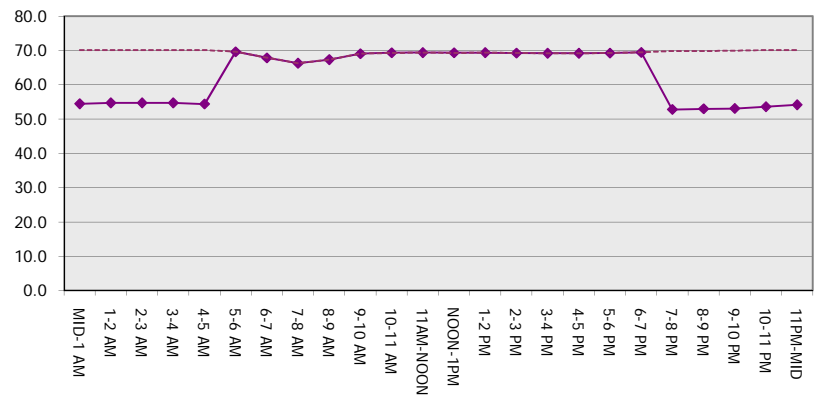
Main Route Average Delay Per Vehicle (Minutes)



Main Route - Average Queue Length (Vehicles)



Main Route - Average Speed (MPH)



IH 794: LINCOLN AVE TO LINCOLN MEMORIAL DR (MILWAUKEE COUNTY) NIGHTTIME 2 LANE CLOSURE NO DIVERSION ROUTE (MAX QUEUE METHOD)	AUGUST
	Analyzed for 2009 Construction Season

SUMMARY OF TRAFFIC MODEL OUTPUT

MON-THUR EASTBOUND DIRECTION

TIME OF DAY	FLOWS AND CAPACITY IN VEH/HR						AVERAGE SPEEDS IN MPH			
	MAIN ROUTE		SITE CAPA CITY	FLOW		AV.DEL PER VEH (MINS)	AVERAGE QUEUE (VEH)	MAIN ROUTE		SITE
	DEMAND FLOW	PCT HEAVY		MAIN ROUTE	'DIVER TED'			WITHOUT WORK ZONE	WITH WORK ZONE	
MID-1 AM	262	0.0	1500	262	0	0.50	0	70.2	54.2	44.5
1-2 AM	140	0.0	1500	140	0	0.49	0	70.2	54.6	44.9
2-3 AM	125	0.0	1500	125	0	0.49	0	70.2	54.6	45.0
3-4 AM	82	0.0	1500	82	0	0.48	0	70.2	54.7	45.1
4-5 AM	142	0.0	1500	142	0	0.49	0	70.2	54.5	44.9
5-6 AM	345	0.0	OFF	345	0	0.00	0	70.2	70.2	70.2
6-7 AM	731	0.0	OFF	731	0	0.00	0	69.8	69.8	69.8
7-8 AM	864	0.0	OFF	864	0	0.00	0	69.7	69.7	69.7
8-9 AM	779	0.0	OFF	779	0	0.00	0	69.7	69.7	69.7
9-10 AM	740	0.0	OFF	740	0	0.00	0	69.8	69.8	69.8
10-11 AM	847	0.0	OFF	847	0	0.00	0	69.7	69.7	69.7
11AM-NOON	1017	0.0	OFF	1017	0	0.00	0	69.5	69.5	69.5
NOON-1PM	1128	0.0	OFF	1128	0	0.00	0	69.3	69.3	69.3
1-2 PM	1126	0.0	OFF	1126	0	0.00	0	69.3	69.3	69.3
2-3 PM	1562	0.0	OFF	1562	0	0.00	0	68.8	68.8	68.8
3-4 PM	2281	0.0	OFF	2281	0	0.00	0	67.9	67.9	67.9
4-5 PM	3179	0.0	OFF	3179	0	0.00	0	66.8	66.8	66.8
5-6 PM	3349	0.0	OFF	3349	0	0.00	0	66.6	66.6	66.6
6-7 PM	1608	0.0	OFF	1608	0	0.00	0	68.7	68.7	68.7
7-8 PM	1093	0.0	1500	1093	0	0.60	0	69.4	51.6	41.4
8-9 PM	941	0.0	1500	941	0	0.58	0	69.6	52.0	41.9
9-10 PM	837	0.0	1500	837	0	0.57	0	69.7	52.4	42.2
10-11 PM	644	0.0	1500	644	0	0.55	0	69.9	53.0	43.0
11PM-MID	515	0.0	1500	515	0	0.53	0	70.1	53.4	43.5

"OFF" INDICATES NO ROAD WORK (ALL LANES OPEN TO TRAFFIC)

----- SITE BREAKDOWN DELAYS -----	
BREAKDOWN DURATION (MINS)	0
RANGE OF QUEUE DELAY - MIN (VEH-H) MAX	0.0
AV BREAKDOWNS PER DAY	0.00
AV QUEUE DELAY/DAY (VEH-H)	0.0
AV TOTAL DELAY/DAY (VEH-H)	0.0

----- SITE ACCIDENT DELAYS -----	
BREAKDOWN DURATION (MINS)	0
RANGE OF QUEUE DELAY - MIN (VEH-H) MAX	0
AV BREAKDOWNS PER DAY	0
AV QUEUE DELAY/DAY (VEH-H)	0
AV TOTAL DELAY/DAY (VEH-H)	0

AVERAGE ACCIDENT NUMBERS (PIA/DAY)	
MAIN ROUTE WITHOUT WORKS	0.0077
MAIN ROUTE WITH WORKS	0.0074
'DIVERSION'	0.0000

PIA: Personal Injury Accidents

ECONOMIC IMPACT ON ROAD USERS	
ROAD USER COSTS PER DAY	\$552
CONGESTED HOURS PER DAY*	0

*Delays Exceeding User-Specified Maximum

IH 794: LINCOLN AVE TO LINCOLN MEMORIAL DR (MILWAUKEE COUNTY)
NIGHTTIME 2 LANE CLOSURE
NO DIVERSION ROUTE (MAX QUEUE METHOD)

AUGUST
 Analyzed for 2009
 Construction Season

GRAPHICAL REPRESENTATION OF TRAFFIC MODEL INPUT AND OUTPUT
MON-THUR EASTBOUND DIRECTION

