

**IH 794: IH 43 TO LINCOLN MEMORIAL DR (MILWAUKEE COUNTY)
NIGHTTIME 2 LANE CLOSURE
NO DIVERSION ROUTE (MAX QUEUE METHOD)**

OCTOBER
Analyzed for 2009
Construction Season

SUMMARY OF TRAFFIC MODEL OUTPUT
SUNDAY WESTBOUND DIRECTION

TIME OF DAY	FLOWS AND CAPACITY IN VEH/HR						AVERAGE SPEEDS IN MPH			
	MAIN ROUTE		SITE CAPA CITY	FLOW		AV.DEL PER VEH (MINS)	AVERAGE QUEUE (VEH)	MAIN ROUTE		SITE
	DEMAND FLOW	PCT HEAVY		MAIN ROUTE	'DIVER TED'			WITHOUT WORK ZONE	WITH WORK ZONE	
MID-1 AM	508	0.0	1500	508	0	0.27	0	70.1	53.3	43.5
1-2 AM	417	0.0	1500	417	0	0.26	0	70.2	53.6	43.8
2-3 AM	402	0.0	1500	402	0	0.26	0	70.2	54.2	43.9
3-4 AM	234	0.0	1500	234	0	0.25	0	70.2	54.3	44.5
4-5 AM	157	0.0	1500	157	0	0.25	0	70.2	54.2	44.8
5-6 AM	199	0.0	1500	199	0	0.25	0	70.2	53.8	44.7
6-7 AM	336	0.0	1500	336	0	0.26	0	70.2	53.4	44.2
7-8 AM	466	0.0	1500	466	0	0.27	0	70.2	52.8	43.7
8-9 AM	631	0.0	1500	631	0	0.28	0	69.9	69.3	43.0
9-10 AM	843	0.0	OFF	843	0	0.00	0	69.7	69.3	69.7
10-11 AM	1151	0.0	OFF	1151	0	0.00	0	69.3	69.1	69.3
11AM-NOON	1306	0.0	OFF	1306	0	0.00	0	69.1	69.1	69.1
NOON-1PM	1329	0.0	OFF	1329	0	0.00	0	69.1	69.2	69.1
1-2 PM	1248	0.0	OFF	1248	0	0.00	0	69.2	69.2	69.2
2-3 PM	1262	0.0	OFF	1262	0	0.00	0	69.2	69.0	69.2
3-4 PM	1383	0.0	OFF	1383	0	0.00	0	69.0	69.2	69.0
4-5 PM	1178	0.0	OFF	1178	0	0.00	0	69.2	69.6	69.2
5-6 PM	969	0.0	OFF	969	0	0.00	0	69.6	69.6	69.6
6-7 PM	897	0.0	OFF	897	0	0.00	0	69.6	69.6	69.6
7-8 PM	759	0.0	1500	759	0	0.28	0	69.8	52.5	42.5
8-9 PM	631	0.0	1500	631	0	0.28	0	69.9	52.8	43.0
9-10 PM	523	0.0	1500	523	0	0.27	0	70.1	53.2	43.4
10-11 PM	390	0.0	1500	390	0	0.26	0	70.2	53.7	43.9
11PM-MID	283	0.0	1500	283	0	0.26	0	70.2	54.0	44.3

"OFF" INDICATES NO ROAD WORK (ALL LANES OPEN TO TRAFFIC)

----- SITE BREAKDOWN DELAYS -----	
BREAKDOWN DURATION (MINS)	0
RANGE OF QUEUE DELAY - MIN (VEH-H) MAX	0.0
AV BREAKDOWNS PER DAY	0.00
AV QUEUE DELAY/DAY (VEH-H)	0.0
AV TOTAL DELAY/DAY (VEH-H)	0.0

----- SITE ACCIDENT DELAYS -----	
BREAKDOWN DURATION (MINS)	0
RANGE OF QUEUE DELAY - MIN (VEH-H) MAX	0
AV BREAKDOWNS PER DAY	0
AV QUEUE DELAY/DAY (VEH-H)	0
AV TOTAL DELAY/DAY (VEH-H)	0

AVERAGE ACCIDENT NUMBERS (PIA/DAY)	
MAIN ROUTE WITHOUT WORKS	0.0028
MAIN ROUTE WITH WORKS	0.0021
'DIVERSION'	0.0000
PIA: Personal Injury Accidents	
IMPACTS ON ROAD USERS	
ROAD USER COSTS PER DAY	\$446
CONGESTED HOURS PER DAY*	0

*Delays Exceeding User-Specified Maximum

IH 794: IH 43 TO LINCOLN MEMORIAL DR (MILWAUKEE COUNTY)
NIGHTTIME 2 LANE CLOSURE
NO DIVERSION ROUTE (MAX QUEUE METHOD)

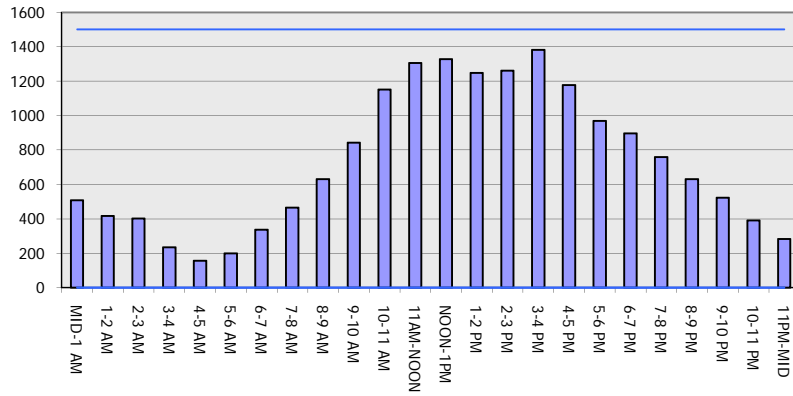
OCTOBER

Analyzed for 2009
 Construction Season

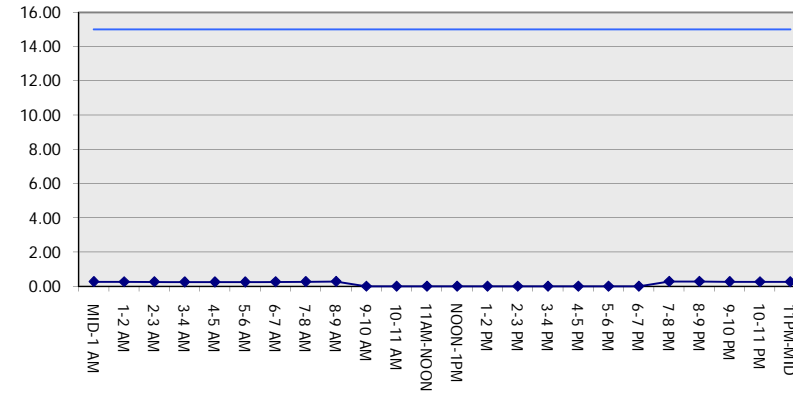
GRAPHICAL REPRESENTATION OF TRAFFIC MODEL INPUT AND OUTPUT

SUNDAY WESTBOUND DIRECTION

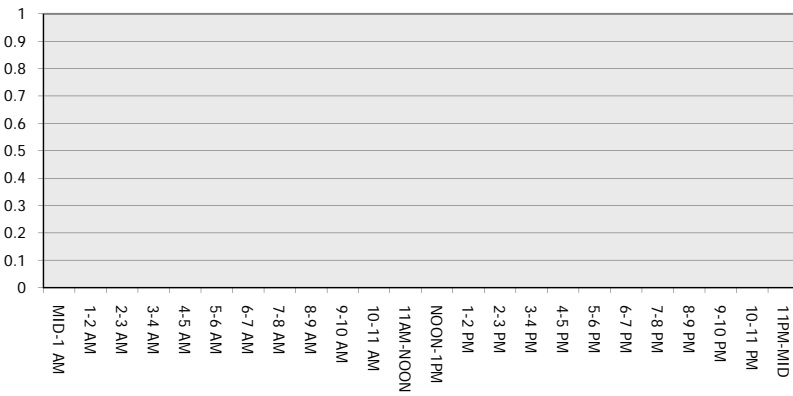
Main Route - Traffic Demand (Vehicles Per Hour)



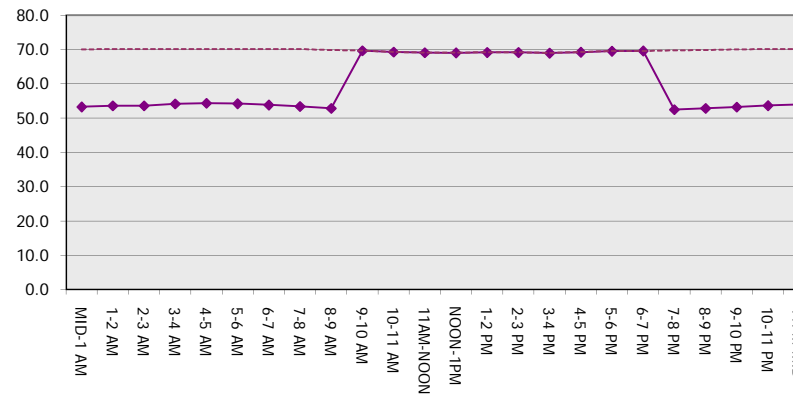
Main Route Average Delay Per Vehicle (Minutes)



Main Route - Average Queue Length (Vehicles)



Main Route - Average Speed (MPH)



IH 794: IH 43 TO LINCOLN MEMORIAL DR (MILWAUKEE COUNTY) NIGHTTIME 2 LANE CLOSURE NO DIVERSION ROUTE (MAX QUEUE METHOD)	OCTOBER
	Analyzed for 2009 Construction Season

SUMMARY OF TRAFFIC MODEL OUTPUT

SUNDAY EASTBOUND DIRECTION

TIME OF DAY	FLOWS AND CAPACITY IN VEH/HR							AVERAGE SPEEDS IN MPH		
	MAIN ROUTE		SITE CAPA CITY	FLOW		AV.DEL PER VEH (MINS)	AVERAGE QUEUE (VEH)	MAIN ROUTE		SITE
	DEMAND FLOW	PCT HEAVY		MAIN ROUTE	'DIVER TED'			WITHOUT WORK ZONE	WITH WORK ZONE	
MID-1 AM	854	0.0	1500	854	0	0.29	0	69.7	52.2	42.2
1-2 AM	498	0.0	1500	498	0	0.27	0	70.1	53.3	43.5
2-3 AM	335	0.0	1500	335	0	0.26	0	70.2	53.8	44.2
3-4 AM	227	0.0	1500	227	0	0.25	0	70.2	54.2	44.6
4-5 AM	219	0.0	1500	219	0	0.25	0	70.2	54.2	44.6
5-6 AM	402	0.0	1500	402	0	0.26	0	70.2	53.6	43.9
6-7 AM	582	0.0	1500	582	0	0.27	0	70.0	53.0	43.2
7-8 AM	829	0.0	1500	829	0	0.29	0	69.7	52.2	42.3
8-9 AM	1338	0.0	1499	1338	0	0.44	0	69.1	45.7	34.7
9-10 AM	1682	0.0	OFF	1682	0	0.00	0	68.6	68.6	68.6
10-11 AM	2070	0.0	OFF	2070	0	0.00	0	68.2	68.2	68.2
11AM-NOON	2523	0.0	OFF	2523	0	0.00	0	67.6	67.6	67.6
NOON-1PM	2675	0.0	OFF	2675	0	0.00	0	67.4	67.4	67.4
1-2 PM	2627	0.0	OFF	2627	0	0.00	0	67.4	67.4	67.4
2-3 PM	2406	0.0	OFF	2406	0	0.00	0	67.8	67.8	67.8
3-4 PM	2503	0.0	OFF	2503	0	0.00	0	67.6	67.6	67.6
4-5 PM	2755	0.0	OFF	2755	0	0.00	0	67.3	67.3	67.3
5-6 PM	2754	0.0	OFF	2754	0	0.00	0	67.3	67.3	67.3
6-7 PM	2502	0.0	OFF	2502	0	0.00	0	67.6	67.6	67.6
7-8 PM	2020	0.0	1499	1945	74	9.96+	274	68.2	7.1	30.8
8-9 PM	1690	0.0	1500	1477	213	16.56+	419	68.6	5.4	30.8
9-10 PM	1408	0.0	1499	1406	2	15.69+	397	69.0	5.6	30.8
10-11 PM	966	0.0	1499	966	0	1.81	121	69.6	24.0	38.1
11PM-MID	545	0.0	1500	545	0	0.27	0	70.0	53.2	43.3

"OFF" INDICATES NO ROAD WORK (ALL LANES OPEN TO TRAFFIC)

+ INDICATES QUEUEING EXCEEDS USER-SPECIFIED MAXIMUM LIMIT

----- SITE BREAKDOWN DELAYS -----	
BREAKDOWN DURATION (MINS)	0
RANGE OF QUEUE DELAY - MIN (VEH-H) MAX	0.0
AV BREAKDOWNS PER DAY	0.00
AV QUEUE DELAY/DAY (VEH-H)	0.0
AV TOTAL DELAY/DAY (VEH-H)	0.0

----- SITE ACCIDENT DELAYS -----	
BREAKDOWN DURATION (MINS)	0
RANGE OF QUEUE DELAY - MIN (VEH-H) MAX	0
AV BREAKDOWNS PER DAY	0
AV QUEUE DELAY/DAY (VEH-H)	0
AV TOTAL DELAY/DAY (VEH-H)	0

AVERAGE ACCIDENT NUMBERS (PIA/DAY)	
MAIN ROUTE WITHOUT WORKS	0.0058
MAIN ROUTE WITH WORKS	0.0045
'DIVERSION'	0.0001

PIA: Personal Injury Accidents

ECONOMIC IMPACT ON ROAD USERS	
ROAD USER COSTS PER DAY	\$20,667
CONGESTED HOURS PER DAY*	3

*Delays Exceeding User-Specified Maximum

**IH 794: IH 43 TO LINCOLN MEMORIAL DR (MILWAUKEE COUNTY)
 NIGHTTIME 2 LANE CLOSURE
 NO DIVERSION ROUTE (MAX QUEUE METHOD)**

OCTOBER

Analyzed for 2009
 Construction Season

GRAPHICAL REPRESENTATION OF TRAFFIC MODEL INPUT AND OUTPUT

SUNDAY EASTBOUND DIRECTION

