

**IH 794: IH 43 TO LINCOLN MEMORIAL DR (MILWAUKEE COUNTY)
NIGHTTIME 2 LANE CLOSURE
NO DIVERSION ROUTE (MAX QUEUE METHOD)**

OCTOBER
Analyzed for 2009
Construction Season

SUMMARY OF TRAFFIC MODEL OUTPUT
SATURDAY WESTBOUND DIRECTION

TIME OF DAY	FLOWS AND CAPACITY IN VEH/HR							AVERAGE SPEEDS IN MPH			
	MAIN ROUTE		SITE CAPA CITY	FLOW		AV.DEL PER VEH (MINS)	AVERAGE QUEUE (VEH)	MAIN ROUTE		SITE	
	DEMAND FLOW	PCT HEAVY		MAIN ROUTE	'DIVER TED'			WITHOUT WORK ZONE	WITH WORK ZONE		
MID-1 AM	422	0.0	1500	422	0	0.27	0	70.2	53.5	43.8	
1-2 AM	396	0.0	1500	396	0	0.26	0	70.2	53.7	43.9	
2-3 AM	324	0.0	1500	324	0	0.26	0	70.2	53.8	44.2	
3-4 AM	207	0.0	1500	207	0	0.25	0	70.2	54.2	44.6	
4-5 AM	206	0.0	1500	206	0	0.25	0	70.2	54.2	44.6	
5-6 AM	307	0.0	1500	307	0	0.26	0	70.2	53.9	44.3	
6-7 AM	554	0.0	1500	554	0	0.27	0	70.0	53.2	43.3	
7-8 AM	879	0.0	1500	879	0	0.29	0	69.6	52.1	42.1	
8-9 AM	1086	0.0	OFF	1086	0	0.00	0	69.4	69.4	69.4	
9-10 AM	1252	0.0	OFF	1252	0	0.00	0	69.2	69.2	69.2	
10-11 AM	1456	0.0	OFF	1456	0	0.00	0	68.9	68.9	68.9	
11AM-NOON	1546	0.0	OFF	1546	0	0.00	0	68.8	68.8	68.8	
NOON-1PM	1503	0.0	OFF	1503	0	0.00	0	68.9	68.9	68.9	
1-2 PM	1467	0.0	OFF	1467	0	0.00	0	68.9	68.9	68.9	
2-3 PM	1481	0.0	OFF	1481	0	0.00	0	68.9	68.9	68.9	
3-4 PM	1393	0.0	OFF	1393	0	0.00	0	69.0	69.0	69.0	
4-5 PM	1303	0.0	OFF	1303	0	0.00	0	69.1	69.1	69.1	
5-6 PM	1034	0.0	OFF	1034	0	0.00	0	69.4	69.4	69.4	
6-7 PM	1036	0.0	1500	1036	0	0.30	0	69.4	51.6	41.5	
7-8 PM	818	0.0	1500	818	0	0.29	0	69.7	52.3	42.4	
8-9 PM	843	0.0	1500	843	0	0.29	0	69.7	52.2	42.2	
9-10 PM	849	0.0	1500	849	0	0.29	0	69.7	52.2	42.2	
10-11 PM	841	0.0	1500	841	0	0.29	0	69.7	52.2	42.2	
11PM-MID	674	0.0	1500	674	0	0.28	0	69.9	52.7	42.8	

"OFF" INDICATES NO ROAD WORK (ALL LANES OPEN TO TRAFFIC)

----- SITE BREAKDOWN DELAYS -----	
BREAKDOWN DURATION (MINS)	0
RANGE OF QUEUE DELAY - MIN (VEH-H) MAX	0.0
AV BREAKDOWNS PER DAY	0.00
AV QUEUE DELAY/DAY (VEH-H)	0.0
AV TOTAL DELAY/DAY (VEH-H)	0.0

----- SITE ACCIDENT DELAYS -----	
BREAKDOWN DURATION (MINS)	0
RANGE OF QUEUE DELAY - MIN (VEH-H) MAX	0
AV BREAKDOWNS PER DAY	0
AV QUEUE DELAY/DAY (VEH-H)	0
AV TOTAL DELAY/DAY (VEH-H)	0

AVERAGE ACCIDENT NUMBERS (PIA/DAY)	
MAIN ROUTE WITHOUT WORKS	0.0035
MAIN ROUTE WITH WORKS	0.0026
'DIVERSION'	0.0000
PIA: Personal Injury Accidents	
IMPACTS ON ROAD USERS	
ROAD USER COSTS PER DAY	\$622
CONGESTED HOURS PER DAY*	0

*Delays Exceeding User-Specified Maximum

IH 794: IH 43 TO LINCOLN MEMORIAL DR (MILWAUKEE COUNTY)
NIGHTTIME 2 LANE CLOSURE
NO DIVERSION ROUTE (MAX QUEUE METHOD)

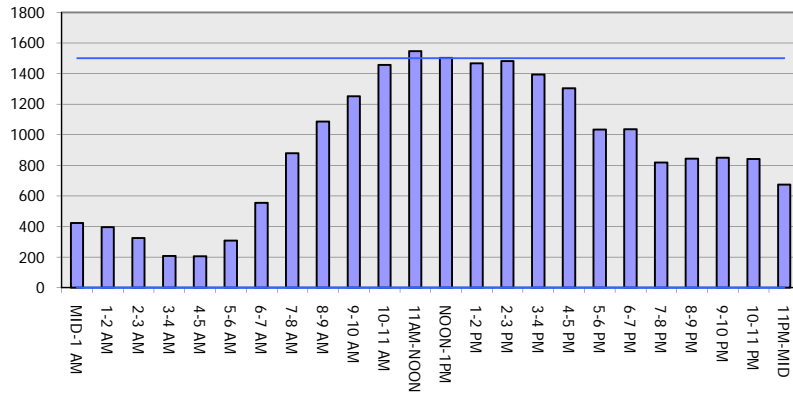
OCTOBER

Analyzed for 2009
 Construction Season

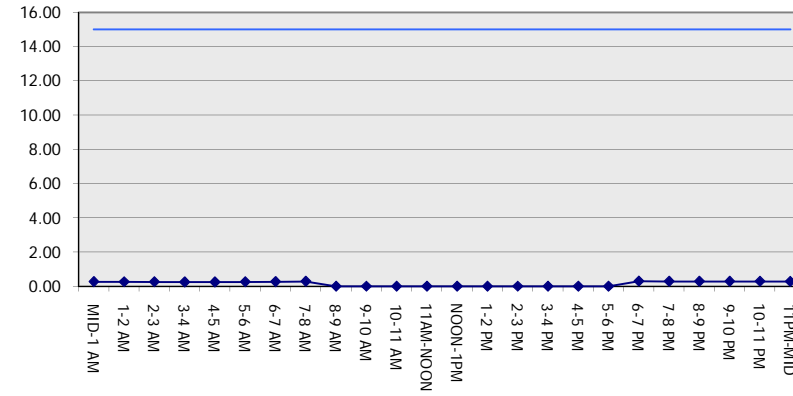
GRAPHICAL REPRESENTATION OF TRAFFIC MODEL INPUT AND OUTPUT

SATURDAY WESTBOUND DIRECTION

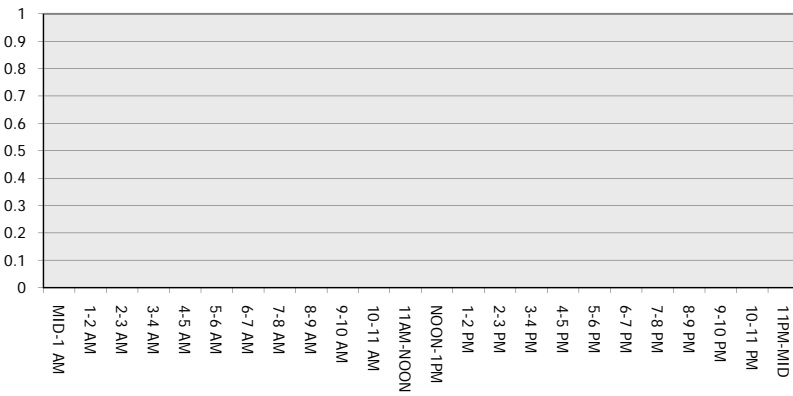
Main Route - Traffic Demand (Vehicles Per Hour)



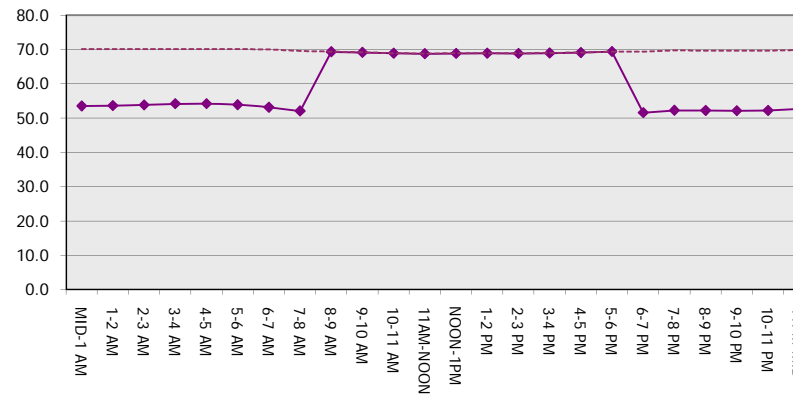
Main Route Average Delay Per Vehicle (Minutes)



Main Route - Average Queue Length (Vehicles)



Main Route - Average Speed (MPH)



IH 794: IH 43 TO LINCOLN MEMORIAL DR (MILWAUKEE COUNTY) NIGHTTIME 2 LANE CLOSURE NO DIVERSION ROUTE (MAX QUEUE METHOD)	OCTOBER
	Analyzed for 2009 Construction Season

SUMMARY OF TRAFFIC MODEL OUTPUT

SATURDAY EASTBOUND DIRECTION

TIME OF DAY	FLOWS AND CAPACITY IN VEH/HR							AVERAGE SPEEDS IN MPH			
	MAIN ROUTE		SITE CAPA CITY	FLOW		AV.DEL PER VEH (MINS)	AVERAGE QUEUE (VEH)	MAIN ROUTE		SITE	
	DEMAND FLOW	PCT HEAVY		MAIN ROUTE	'DIVER TED'			WITHOUT WORK ZONE	WITH WORK ZONE		
MID-1 AM	756	0.0	1499	756	0	1.19	91	69.8	30.4	41.4	
1-2 AM	406	0.0	1500	406	0	0.26	0	70.2	53.6	43.8	
2-3 AM	336	0.0	1500	336	0	0.26	0	70.2	53.8	44.2	
3-4 AM	270	0.0	1500	270	0	0.26	0	70.2	54.0	44.4	
4-5 AM	304	0.0	1500	304	0	0.26	0	70.2	53.9	44.3	
5-6 AM	736	0.0	1500	736	0	0.28	0	69.8	52.5	42.6	
6-7 AM	1081	0.0	1499	1081	0	0.32	0	69.4	50.5	40.3	
7-8 AM	1611	0.0	1499	1611	0	1.18	31	68.7	29.1	31.1	
8-9 AM	2196	0.0	OFF	2196	0	0.02	2	68.0	66.3	66.3	
9-10 AM	2318	0.0	OFF	2318	0	0.00	0	67.9	67.9	67.9	
10-11 AM	2563	0.0	OFF	2563	0	0.00	0	67.6	67.6	67.6	
11AM-NOON	2760	0.0	OFF	2760	0	0.00	0	67.3	67.3	67.3	
NOON-1PM	2910	0.0	OFF	2910	0	0.00	0	67.1	67.1	67.1	
1-2 PM	2821	0.0	OFF	2821	0	0.00	0	67.3	67.3	67.3	
2-3 PM	3000	0.0	OFF	3000	0	0.00	0	67.0	67.0	67.0	
3-4 PM	3179	0.0	OFF	3179	0	0.00	0	66.8	66.8	66.8	
4-5 PM	3311	0.0	OFF	3311	0	0.00	0	66.6	66.6	66.6	
5-6 PM	3555	0.0	OFF	3555	0	0.00	0	66.3	66.3	66.3	
6-7 PM	3535	0.0	1499	1594	1942	17.36+	445	66.3	5.3	36.5	
7-8 PM	2650	0.0	1499	1666	985	15.10+	399	67.4	5.8	35.3	
8-9 PM	2133	0.0	1499	1703	430	15.90+	404	68.1	5.5	30.8	
9-10 PM	2204	0.0	1499	1495	709	16.67+	422	68.0	5.4	30.8	
10-11 PM	1998	0.0	1499	1495	503	16.66+	421	68.2	5.4	30.8	
11PM-MID	1486	0.0	1499	1382	104	15.64+	395	68.9	5.6	30.8	

"OFF" INDICATES NO ROAD WORK (ALL LANES OPEN TO TRAFFIC)

+ INDICATES QUEUEING EXCEEDS USER-SPECIFIED MAXIMUM LIMIT

----- SITE BREAKDOWN DELAYS -----	
BREAKDOWN DURATION (MINS)	0
RANGE OF QUEUE DELAY - MIN	0.0
(VEH-H) MAX	0.0
AV BREAKDOWNS PER DAY	0.00
AV QUEUE DELAY/DAY (VEH-H)	0.0
AV TOTAL DELAY/DAY (VEH-H)	0.0

----- SITE ACCIDENT DELAYS -----	
BREAKDOWN DURATION (MINS)	0
RANGE OF QUEUE DELAY - MIN	0
(VEH-H) MAX	0
AV BREAKDOWNS PER DAY	0
AV QUEUE DELAY/DAY (VEH-H)	0
AV TOTAL DELAY/DAY (VEH-H)	0

AVERAGE ACCIDENT NUMBERS (PIA/DAY)	
MAIN ROUTE WITHOUT WORKS	0.0077
MAIN ROUTE WITH WORKS	0.0053
'DIVERSION'	0.0017

PIA: Personal Injury Accidents

ECONOMIC IMPACT ON ROAD USERS	
ROAD USER COSTS PER DAY	\$61,214
CONGESTED HOURS PER DAY*	6

*Delays Exceeding User-Specified Maximum

**IH 794: IH 43 TO LINCOLN MEMORIAL DR (MILWAUKEE COUNTY)
 NIGHTTIME 2 LANE CLOSURE
 NO DIVERSION ROUTE (MAX QUEUE METHOD)**

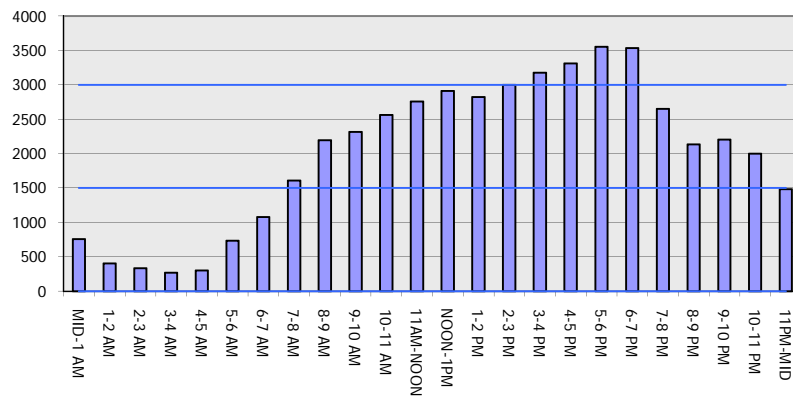
OCTOBER

Analyzed for 2009
 Construction Season

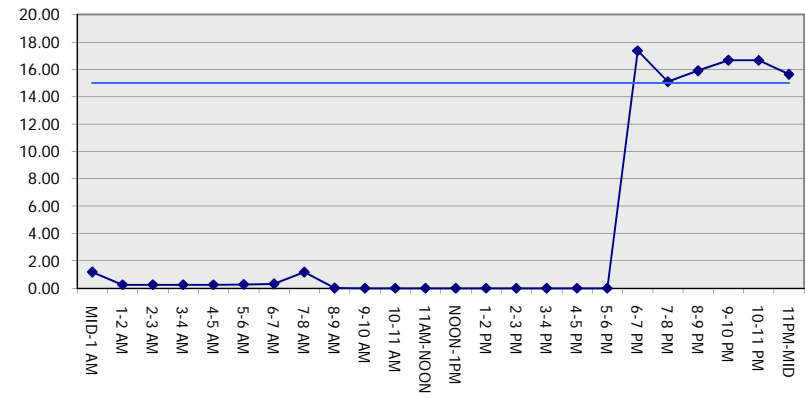
GRAPHICAL REPRESENTATION OF TRAFFIC MODEL INPUT AND OUTPUT

SATURDAY EASTBOUND DIRECTION

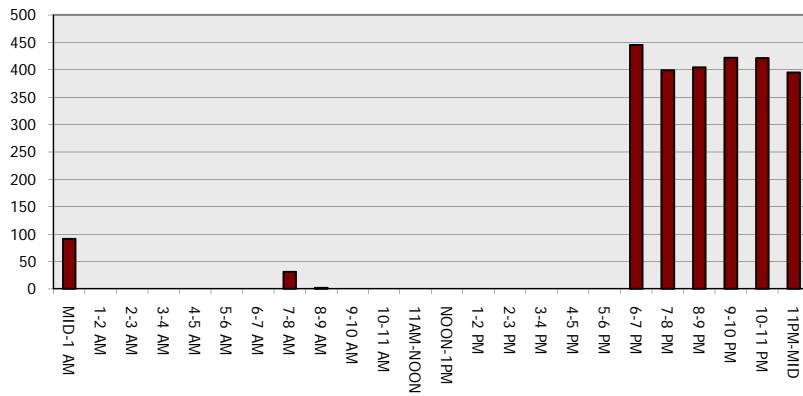
Main Route - Traffic Demand (Vehicles Per Hour)



Main Route Average Delay Per Vehicle (Minutes)



Main Route - Average Queue Length (Vehicles)



Main Route - Average Speed (MPH)

