

**IH 794: IH 43 TO LINCOLN MEMORIAL DR (MILWAUKEE COUNTY)
NIGHTTIME 2 LANE CLOSURE
NO DIVERSION ROUTE (MAX QUEUE METHOD)**

OCTOBER
Analyzed for 2009
Construction Season

SUMMARY OF TRAFFIC MODEL OUTPUT
MON-THUR WESTBOUND DIRECTION

TIME OF DAY	FLOWS AND CAPACITY IN VEH/HR						AVERAGE SPEEDS IN MPH				
	MAIN ROUTE		SITE CAPA CITY	FLOW		AV.DEL PER VEH (MINS)	AVERAGE QUEUE (VEH)	MAIN ROUTE		SITE	
	DEMAND FLOW	PCT HEAVY		MAIN ROUTE	'DIVER TED'			WITHOUT WORK ZONE	WITH WORK ZONE		
MID-1 AM	227	0.0	1500	227	0	0.25	0	70.2	54.2	44.6	
1-2 AM	172	0.0	1500	172	0	0.25	0	70.2	54.3	44.8	
2-3 AM	139	0.0	1500	139	0	0.25	0	70.2	54.4	44.9	
3-4 AM	146	0.0	1500	146	0	0.25	0	70.2	54.4	44.9	
4-5 AM	269	0.0	1500	269	0	0.26	0	70.2	54.0	44.4	
5-6 AM	797	0.0	OFF	797	0	0.00	0	69.7	69.7	69.7	
6-7 AM	2037	0.0	OFF	2037	0	0.00	0	68.2	68.2	68.2	
7-8 AM	2643	0.0	OFF	2643	0	0.00	0	67.4	67.4	67.4	
8-9 AM	1720	0.0	OFF	1720	0	0.00	0	68.6	68.6	68.6	
9-10 AM	1197	0.0	OFF	1197	0	0.00	0	69.2	69.2	69.2	
10-11 AM	1216	0.0	OFF	1216	0	0.00	0	69.2	69.2	69.2	
11AM-NOON	1405	0.0	OFF	1405	0	0.00	0	69.0	69.0	69.0	
NOON-1PM	1466	0.0	OFF	1466	0	0.00	0	68.9	68.9	68.9	
1-2 PM	1668	0.0	OFF	1668	0	0.00	0	68.7	68.7	68.7	
2-3 PM	2090	0.0	OFF	2090	0	0.00	0	68.1	68.1	68.1	
3-4 PM	2289	0.0	OFF	2289	0	0.00	0	67.9	67.9	67.9	
4-5 PM	2267	0.0	OFF	2267	0	0.00	0	67.9	67.9	67.9	
5-6 PM	2107	0.0	OFF	2107	0	0.00	0	68.1	68.1	68.1	
6-7 PM	1590	0.0	OFF	1590	0	0.00	0	68.7	68.7	68.7	
7-8 PM	1160	0.0	1500	1160	0	0.33	0	69.3	50.1	39.7	
8-9 PM	1031	0.0	1500	1031	0	0.30	0	69.4	51.6	41.5	
9-10 PM	827	0.0	1500	827	0	0.29	0	69.7	52.2	42.3	
10-11 PM	539	0.0	1500	539	0	0.27	0	70.0	53.2	43.3	
11PM-MID	366	0.0	1500	366	0	0.26	0	70.2	53.7	44.0	

"OFF" INDICATES NO ROAD WORK (ALL LANES OPEN TO TRAFFIC)

----- SITE BREAKDOWN DELAYS -----	
BREAKDOWN DURATION (MINS)	0
RANGE OF QUEUE DELAY - MIN (VEH-H) MAX	0.0
AV BREAKDOWNS PER DAY	0.00
AV QUEUE DELAY/DAY (VEH-H)	0.0
AV TOTAL DELAY/DAY (VEH-H)	0.0

----- SITE ACCIDENT DELAYS -----	
BREAKDOWN DURATION (MINS)	0
RANGE OF QUEUE DELAY - MIN (VEH-H) MAX	0
AV BREAKDOWNS PER DAY	0
AV QUEUE DELAY/DAY (VEH-H)	0
AV TOTAL DELAY/DAY (VEH-H)	0

AVERAGE ACCIDENT NUMBERS (PIA/DAY)	
MAIN ROUTE WITHOUT WORKS	0.0047
MAIN ROUTE WITH WORKS	0.0041
'DIVERSION'	0.0000
PIA: Personal Injury Accidents	
IMPACTS ON ROAD USERS	
ROAD USER COSTS PER DAY	\$327
CONGESTED HOURS PER DAY*	0

*Delays Exceeding User-Specified Maximum

IH 794: IH 43 TO LINCOLN MEMORIAL DR (MILWAUKEE COUNTY)
NIGHTTIME 2 LANE CLOSURE
NO DIVERSION ROUTE (MAX QUEUE METHOD)

OCTOBER

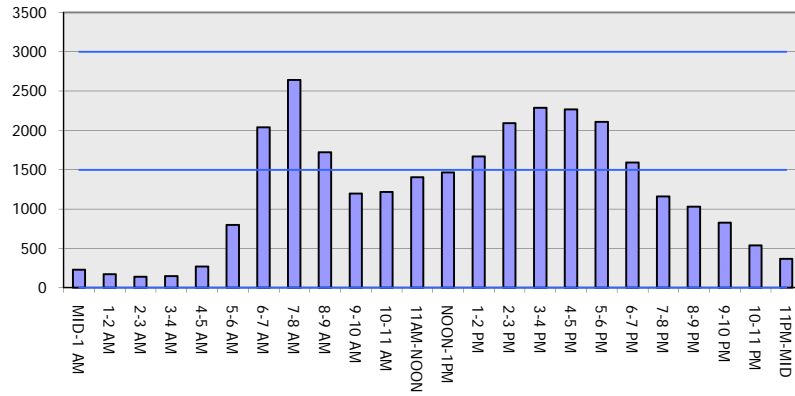
Analyzed for 2009
 Construction Season

GRAPHICAL REPRESENTATION OF TRAFFIC MODEL INPUT AND OUTPUT

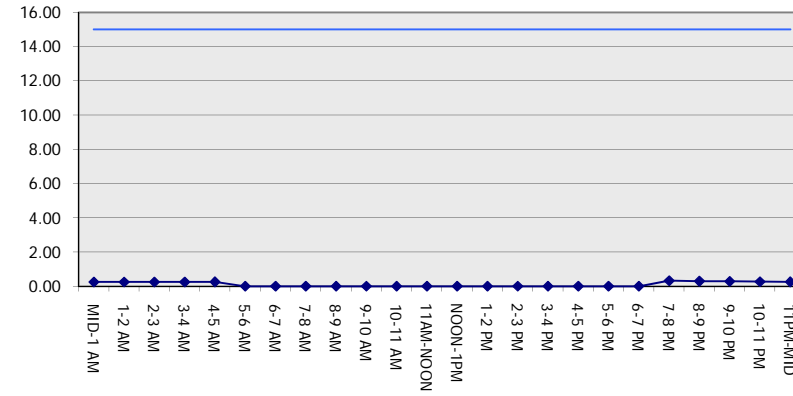
MON-THUR

WESTBOUND DIRECTION

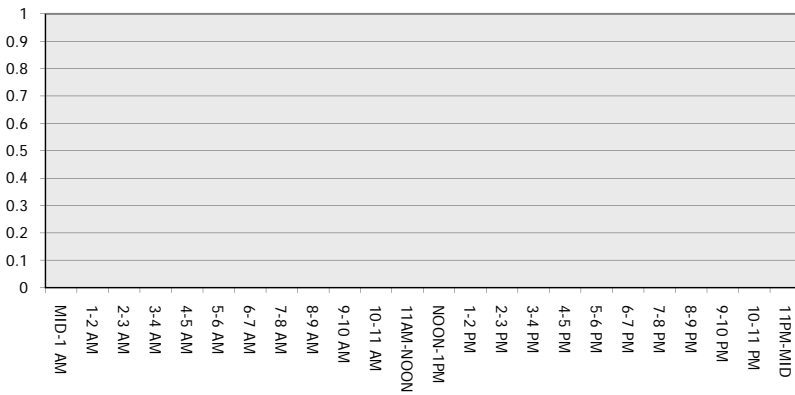
Main Route - Traffic Demand (Vehicles Per Hour)



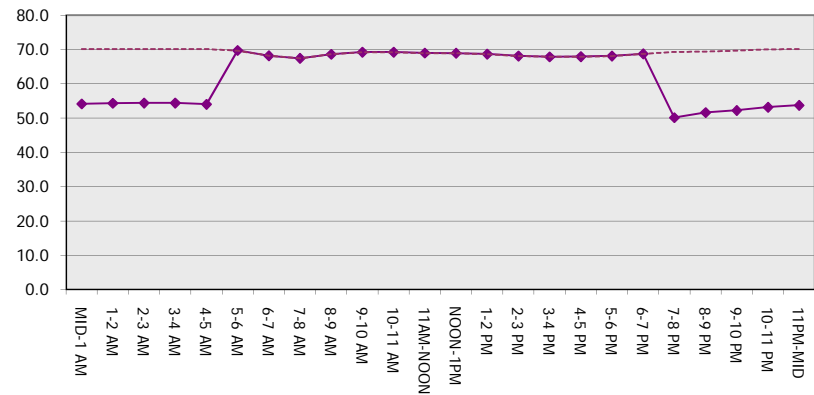
Main Route Average Delay Per Vehicle (Minutes)



Main Route - Average Queue Length (Vehicles)



Main Route - Average Speed (MPH)



IH 794: IH 43 TO LINCOLN MEMORIAL DR (MILWAUKEE COUNTY) NIGHTTIME 2 LANE CLOSURE NO DIVERSION ROUTE (MAX QUEUE METHOD)	OCTOBER
	Analyzed for 2009 Construction Season

SUMMARY OF TRAFFIC MODEL OUTPUT

MON-THUR EASTBOUND DIRECTION

TIME OF DAY	FLOWS AND CAPACITY IN VEH/HR						AVERAGE SPEEDS IN MPH			
	MAIN ROUTE		SITE CAPA CITY	FLOW		AV.DEL PER VEH (MINS)	AVERAGE QUEUE (VEH)	MAIN ROUTE		SITE
	DEMAND FLOW	PCT HEAVY		MAIN ROUTE	'DIVER TED'			WITHOUT WORK ZONE	WITH WORK ZONE	
MID-1 AM	337	0.0	1500	337	0	0.26	0	70.2	53.8	44.2
1-2 AM	232	0.0	1500	232	0	0.25	0	70.2	54.2	44.5
2-3 AM	193	0.0	1500	193	0	0.25	0	70.2	54.3	44.7
3-4 AM	240	0.0	1500	240	0	0.25	0	70.2	54.1	44.5
4-5 AM	587	0.0	1500	587	0	0.27	0	70.0	53.0	43.2
5-6 AM	2471	0.0	OFF	2471	0	0.00	0	67.7	67.7	67.7
6-7 AM	4996	0.0	OFF	4996	0	0.00	0	56.7	56.7	56.7
7-8 AM	5557	0.0	OFF	5557	0	0.00	0	52.9	52.9	52.9
8-9 AM	5091	0.0	OFF	5091	0	0.00	0	56.1	56.1	56.1
9-10 AM	3358	0.0	OFF	3358	0	0.00	0	66.6	66.6	66.6
10-11 AM	2813	0.0	OFF	2813	0	0.00	0	67.3	67.3	67.3
11AM-NOON	2988	0.0	OFF	2988	0	0.00	0	67.0	67.0	67.0
NOON-1PM	2936	0.0	OFF	2936	0	0.00	0	67.1	67.1	67.1
1-2 PM	2925	0.0	OFF	2925	0	0.00	0	67.1	67.1	67.1
2-3 PM	3049	0.0	OFF	3049	0	0.00	0	66.9	66.9	66.9
3-4 PM	3449	0.0	OFF	3449	0	0.00	0	66.4	66.4	66.4
4-5 PM	4112	0.0	OFF	4112	0	0.00	0	62.8	62.8	62.8
5-6 PM	4238	0.0	OFF	4238	0	0.00	0	61.9	61.9	61.9
6-7 PM	3343	0.0	OFF	3343	0	0.00	0	66.6	66.6	66.6
7-8 PM	2321	0.0	1499	1971	350	12.81+	332	67.9	6.1	30.8
8-9 PM	2071	0.0	1499	1494	577	16.66+	422	68.2	5.4	30.8
9-10 PM	1758	0.0	1499	1461	297	16.51+	418	68.6	5.5	30.8
10-11 PM	1247	0.0	1499	1247	0	12.85+	331	69.2	6.1	31.5
11PM-MID	717	0.0	1500	717	0	0.53	22	69.9	43.2	42.6

"OFF" INDICATES NO ROAD WORK (ALL LANES OPEN TO TRAFFIC)

+ INDICATES QUEUEING EXCEEDS USER-SPECIFIED MAXIMUM LIMIT

----- SITE BREAKDOWN DELAYS -----	
BREAKDOWN DURATION (MINS)	0
RANGE OF QUEUE DELAY - MIN (VEH-H) MAX	0.0
AV BREAKDOWNS PER DAY	0.00
AV QUEUE DELAY/DAY (VEH-H)	0.0
AV TOTAL DELAY/DAY (VEH-H)	0.0

----- SITE ACCIDENT DELAYS -----	
BREAKDOWN DURATION (MINS)	0
RANGE OF QUEUE DELAY - MIN (VEH-H) MAX	0
AV BREAKDOWNS PER DAY	0
AV QUEUE DELAY/DAY (VEH-H)	0
AV TOTAL DELAY/DAY (VEH-H)	0

AVERAGE ACCIDENT NUMBERS (PIA/DAY)	
MAIN ROUTE WITHOUT WORKS	0.0097
MAIN ROUTE WITH WORKS	0.0086
'DIVERSION'	0.0005

PIA: Personal Injury Accidents

ECONOMIC IMPACT ON ROAD USERS	
ROAD USER COSTS PER DAY	\$25,484
CONGESTED HOURS PER DAY*	4

*Delays Exceeding User-Specified Maximum

IH 794: IH 43 TO LINCOLN MEMORIAL DR (MILWAUKEE COUNTY)
NIGHTTIME 2 LANE CLOSURE
NO DIVERSION ROUTE (MAX QUEUE METHOD)

OCTOBER

Analyzed for 2009
 Construction Season

GRAPHICAL REPRESENTATION OF TRAFFIC MODEL INPUT AND OUTPUT
MON-THUR EASTBOUND DIRECTION

