

**IH 794: IH 43 TO LINCOLN MEMORIAL DR (MILWAUKEE COUNTY)
NIGHTTIME 2 LANE CLOSURE
NO DIVERSION ROUTE (MAX QUEUE METHOD)**

OCTOBER
Analyzed for 2009
Construction Season

SUMMARY OF TRAFFIC MODEL OUTPUT
FRIDAY WESTBOUND DIRECTION

TIME OF DAY	FLOWS AND CAPACITY IN VEH/HR						AVERAGE SPEEDS IN MPH				
	MAIN ROUTE		SITE CAPA CITY	FLOW		AV.DEL PER VEH (MINS)	AVERAGE QUEUE (VEH)	MAIN ROUTE		SITE	
	DEMAND FLOW	PCT HEAVY		MAIN ROUTE	'DIVER TED'			WITHOUT WORK ZONE	WITH WORK ZONE		
MID-1 AM	320	0.0	1500	320	0	0.26	0	70.2	53.8	44.2	
1-2 AM	257	0.0	1500	257	0	0.25	0	70.2	54.0	44.5	
2-3 AM	184	0.0	1500	184	0	0.25	0	70.2	54.3	44.8	
3-4 AM	167	0.0	1500	167	0	0.25	0	70.2	54.3	44.8	
4-5 AM	267	0.0	1500	267	0	0.26	0	70.2	54.0	44.4	
5-6 AM	779	0.0	OFF	779	0	0.00	0	69.7	69.7	69.7	
6-7 AM	2002	0.0	OFF	2002	0	0.00	0	68.2	68.2	68.2	
7-8 AM	2694	0.0	OFF	2694	0	0.00	0	67.4	67.4	67.4	
8-9 AM	1811	0.0	OFF	1811	0	0.00	0	68.5	68.5	68.5	
9-10 AM	1442	0.0	OFF	1442	0	0.00	0	68.9	68.9	68.9	
10-11 AM	1489	0.0	OFF	1489	0	0.00	0	68.9	68.9	68.9	
11AM-NOON	1730	0.0	OFF	1730	0	0.00	0	68.6	68.6	68.6	
NOON-1PM	1727	0.0	OFF	1727	0	0.00	0	68.6	68.6	68.6	
1-2 PM	1812	0.0	OFF	1812	0	0.00	0	68.5	68.5	68.5	
2-3 PM	2150	0.0	OFF	2150	0	0.00	0	68.1	68.1	68.1	
3-4 PM	2214	0.0	OFF	2214	0	0.00	0	68.0	68.0	68.0	
4-5 PM	2121	0.0	OFF	2121	0	0.00	0	68.1	68.1	68.1	
5-6 PM	2023	0.0	OFF	2023	0	0.00	0	68.2	68.2	68.2	
6-7 PM	1469	0.0	OFF	1469	0	0.00	0	68.9	68.9	68.9	
7-8 PM	974	0.0	1500	974	0	0.30	0	69.6	51.8	41.8	
8-9 PM	868	0.0	1500	868	0	0.29	0	69.7	52.1	42.2	
9-10 PM	1040	0.0	1500	1040	0	0.30	0	69.4	51.6	41.5	
10-11 PM	824	0.0	1500	824	0	0.29	0	69.7	52.2	42.3	
11PM-MID	669	0.0	1500	669	0	0.28	0	69.9	52.7	42.8	

"OFF" INDICATES NO ROAD WORK (ALL LANES OPEN TO TRAFFIC)

----- SITE BREAKDOWN DELAYS -----	
BREAKDOWN DURATION (MINS)	0
RANGE OF QUEUE DELAY - MIN (VEH-H) MAX	0.0
AV BREAKDOWNS PER DAY	0.00
AV QUEUE DELAY/DAY (VEH-H)	0.0
AV TOTAL DELAY/DAY (VEH-H)	0.0

----- SITE ACCIDENT DELAYS -----	
BREAKDOWN DURATION (MINS)	0
RANGE OF QUEUE DELAY - MIN (VEH-H) MAX	0
AV BREAKDOWNS PER DAY	0
AV QUEUE DELAY/DAY (VEH-H)	0
AV TOTAL DELAY/DAY (VEH-H)	0

AVERAGE ACCIDENT NUMBERS (PIA/DAY)	
MAIN ROUTE WITHOUT WORKS	0.0049
MAIN ROUTE WITH WORKS	0.0043
'DIVERSION'	0.0000
PIA: Personal Injury Accidents	
IMPACTS ON ROAD USERS	
ROAD USER COSTS PER DAY	\$378
CONGESTED HOURS PER DAY*	0

*Delays Exceeding User-Specified Maximum

IH 794: IH 43 TO LINCOLN MEMORIAL DR (MILWAUKEE COUNTY)
NIGHTTIME 2 LANE CLOSURE
NO DIVERSION ROUTE (MAX QUEUE METHOD)

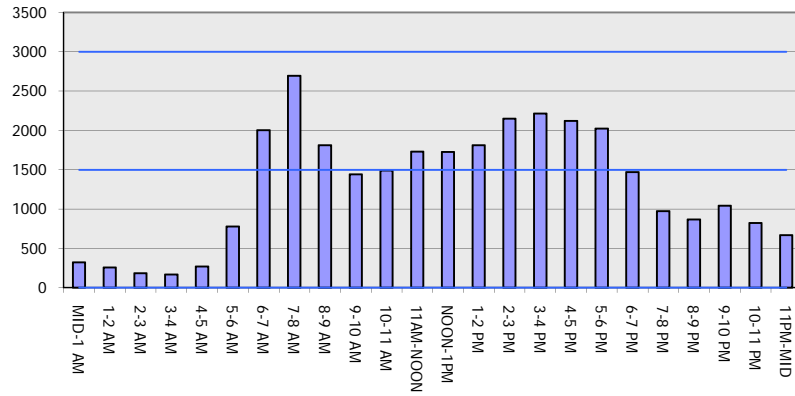
OCTOBER

Analyzed for 2009
 Construction Season

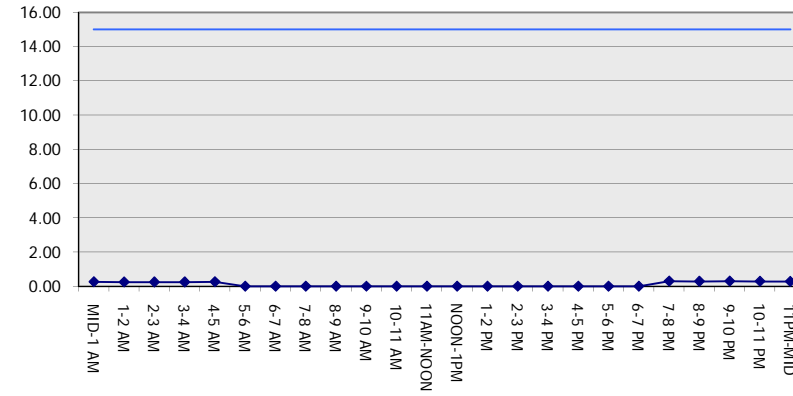
GRAPHICAL REPRESENTATION OF TRAFFIC MODEL INPUT AND OUTPUT

FRIDAY WESTBOUND DIRECTION

Main Route - Traffic Demand (Vehicles Per Hour)



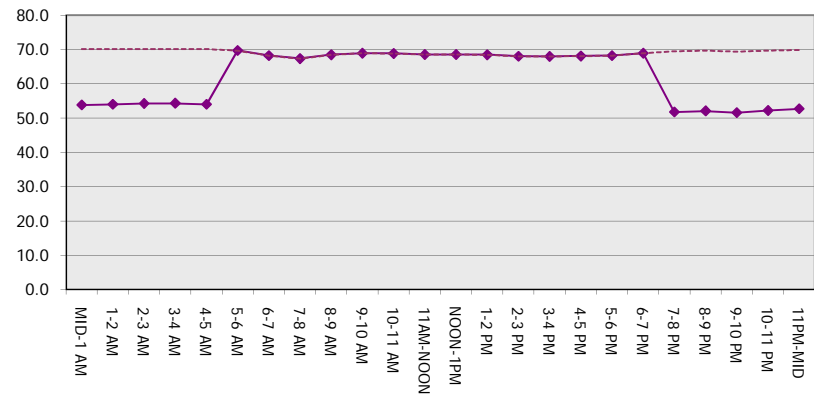
Main Route Average Delay Per Vehicle (Minutes)



Main Route - Average Queue Length (Vehicles)



Main Route - Average Speed (MPH)



IH 794: IH 43 TO LINCOLN MEMORIAL DR (MILWAUKEE COUNTY) NIGHTTIME 2 LANE CLOSURE NO DIVERSION ROUTE (MAX QUEUE METHOD)	OCTOBER
	Analyzed for 2009 Construction Season

SUMMARY OF TRAFFIC MODEL OUTPUT

FRIDAY EASTBOUND DIRECTION

TIME OF DAY	FLOWS AND CAPACITY IN VEH/HR							AVERAGE SPEEDS IN MPH			
	MAIN ROUTE		SITE CAPA CITY	FLOW		AV.DEL PER VEH (MINS)	AVERAGE QUEUE (VEH)	MAIN ROUTE		SITE	
	DEMAND FLOW	PCT HEAVY		MAIN ROUTE	'DIVER TED'			WITHOUT WORK ZONE	WITH WORK ZONE		
MID-1 AM	442	0.0	1500	442	0	0.50	24	70.2	44.5	43.6	
1-2 AM	289	0.0	1500	289	0	0.26	0	70.2	54.0	44.3	
2-3 AM	218	0.0	1500	218	0	0.25	0	70.2	54.2	44.6	
3-4 AM	275	0.0	1500	275	0	0.26	0	70.2	54.0	44.4	
4-5 AM	568	0.0	1500	568	0	0.27	0	70.0	53.1	43.2	
5-6 AM	2409	0.0	OFF	2409	0	0.00	0	67.8	67.8	67.8	
6-7 AM	4300	0.0	OFF	4300	0	0.00	0	61.5	61.5	61.5	
7-8 AM	4823	0.0	OFF	4823	0	0.00	0	57.9	57.9	57.9	
8-9 AM	4476	0.0	OFF	4476	0	0.00	0	60.3	60.3	60.3	
9-10 AM	3106	0.0	OFF	3106	0	0.00	0	66.9	66.9	66.9	
10-11 AM	2641	0.0	OFF	2641	0	0.00	0	67.4	67.4	67.4	
11AM-NOON	3026	0.0	OFF	3026	0	0.00	0	66.9	66.9	66.9	
NOON-1PM	2930	0.0	OFF	2930	0	0.00	0	67.1	67.1	67.1	
1-2 PM	3173	0.0	OFF	3173	0	0.00	0	66.8	66.8	66.8	
2-3 PM	3291	0.0	OFF	3291	0	0.00	0	66.6	66.6	66.6	
3-4 PM	3818	0.0	OFF	3818	0	0.00	0	64.8	64.8	64.8	
4-5 PM	4305	0.0	OFF	4305	0	0.00	0	61.4	61.4	61.4	
5-6 PM	4676	0.0	OFF	4676	0	0.00	0	58.9	58.9	58.9	
6-7 PM	3910	0.0	OFF	3910	0	0.00	0	64.1	64.1	64.1	
7-8 PM	2898	0.0	1499	1572	1326	16.33+	417	67.1	5.5	36.5	
8-9 PM	2309	0.0	1499	1900	409	13.40+	353	67.9	6.1	30.8	
9-10 PM	2473	0.0	1499	1485	988	16.74+	424	67.7	5.4	30.8	
10-11 PM	1974	0.0	1499	1495	479	16.66+	421	68.3	5.4	30.8	
11PM-MID	1332	0.0	1499	1263	69	13.98+	357	69.1	5.9	31.1	

"OFF" INDICATES NO ROAD WORK (ALL LANES OPEN TO TRAFFIC)

+ INDICATES QUEUEING EXCEEDS USER-SPECIFIED MAXIMUM LIMIT

----- SITE BREAKDOWN DELAYS -----	
BREAKDOWN DURATION (MINS)	0
RANGE OF QUEUE DELAY - MIN (VEH-H) MAX	0.0
AV BREAKDOWNS PER DAY	0.00
AV QUEUE DELAY/DAY (VEH-H)	0.0
AV TOTAL DELAY/DAY (VEH-H)	0.0

----- SITE ACCIDENT DELAYS -----	
BREAKDOWN DURATION (MINS)	0
RANGE OF QUEUE DELAY - MIN (VEH-H) MAX	0
AV BREAKDOWNS PER DAY	0
AV QUEUE DELAY/DAY (VEH-H)	0
AV TOTAL DELAY/DAY (VEH-H)	0

AVERAGE ACCIDENT NUMBERS (PIA/DAY)	
MAIN ROUTE WITHOUT WORKS	0.0101
MAIN ROUTE WITH WORKS	0.0086
'DIVERSION'	0.0012

PIA: Personal Injury Accidents

ECONOMIC IMPACT ON ROAD USERS	
ROAD USER COSTS PER DAY	\$40,880
CONGESTED HOURS PER DAY*	5

*Delays Exceeding User-Specified Maximum

**IH 794: IH 43 TO LINCOLN MEMORIAL DR (MILWAUKEE COUNTY)
 NIGHTTIME 2 LANE CLOSURE
 NO DIVERSION ROUTE (MAX QUEUE METHOD)**

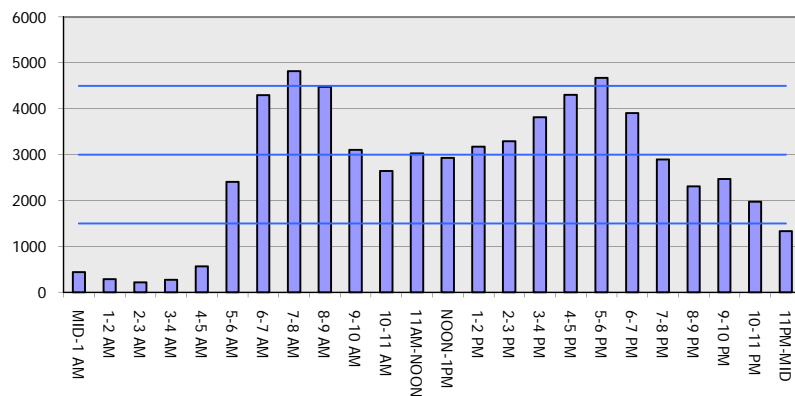
OCTOBER

Analyzed for 2009
 Construction Season

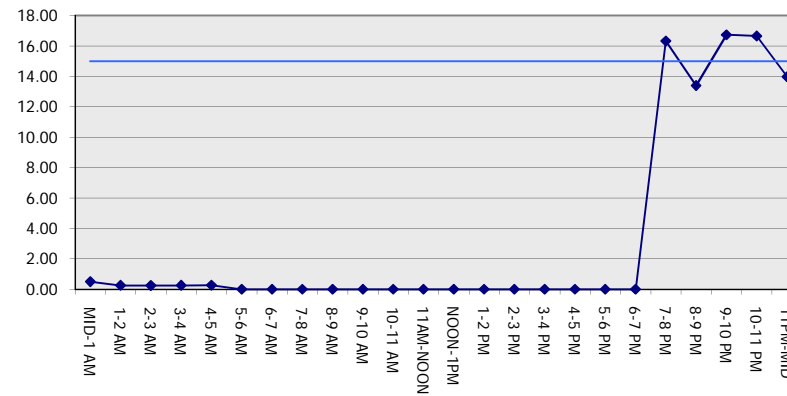
GRAPHICAL REPRESENTATION OF TRAFFIC MODEL INPUT AND OUTPUT

FRIDAY EASTBOUND DIRECTION

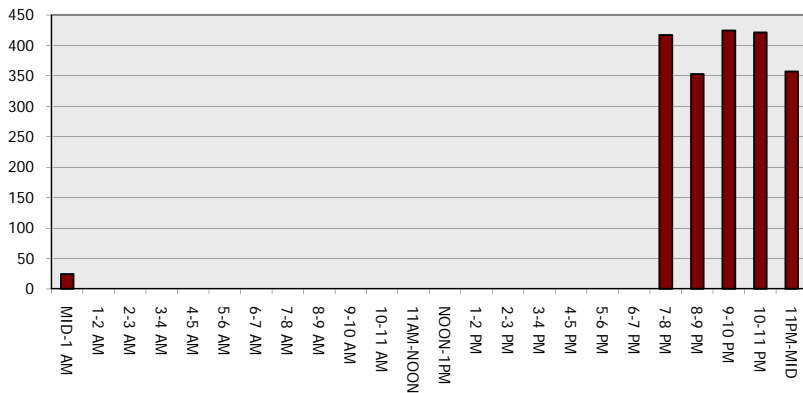
Main Route - Traffic Demand (Vehicles Per Hour)



Main Route Average Delay Per Vehicle (Minutes)



Main Route - Average Queue Length (Vehicles)



Main Route - Average Speed (MPH)

