

IH 794: IH 43 TO LINCOLN MEMORIAL DR (MILWAUKEE COUNTY) NIGHTTIME CLOSURE NO DIVERSION ROUTE (MAX QUEUE METHOD)	OCTOBER
	Analyzed for 2009 Construction Season

SUMMARY OF TRAFFIC MODEL OUTPUT

FRIDAY WESTBOUND DIRECTION

TIME OF DAY	FLOWS AND CAPACITY IN VEH/HR						AVERAGE SPEEDS IN MPH			
	MAIN ROUTE		SITE CAPA CITY	FLOW		AV.DEL PER VEH (MINS)	AVERAGE QUEUE (VEH)	MAIN ROUTE		SITE
	DEMAND FLOW	PCT HEAVY		MAIN ROUTE	'DIVER TED'			WITHOUT WORK ZONE	WITH WORK ZONE	
MID-1 AM	320	0.0	3000	320	0	0.18	0	70.2	57.9	49.7
1-2 AM	257	0.0	3000	257	0	0.18	0	70.2	57.9	49.7
2-3 AM	184	0.0	3000	184	0	0.18	0	70.2	57.9	49.7
3-4 AM	167	0.0	3000	167	0	0.18	0	70.2	57.9	49.7
4-5 AM	267	0.0	3000	267	0	0.18	0	70.2	57.9	49.7
5-6 AM	779	0.0	OFF	779	0	0.00	0	69.7	69.7	69.7
6-7 AM	2002	0.0	OFF	2002	0	0.00	0	68.2	68.2	68.2
7-8 AM	2694	0.0	OFF	2694	0	0.00	0	67.4	67.4	67.4
8-9 AM	1811	0.0	OFF	1811	0	0.00	0	68.5	68.5	68.5
9-10 AM	1442	0.0	OFF	1442	0	0.00	0	68.9	68.9	68.9
10-11 AM	1489	0.0	OFF	1489	0	0.00	0	68.9	68.9	68.9
11AM-NOON	1730	0.0	OFF	1730	0	0.00	0	68.6	68.6	68.6
NOON-1PM	1727	0.0	OFF	1727	0	0.00	0	68.6	68.6	68.6
1-2 PM	1812	0.0	OFF	1812	0	0.00	0	68.5	68.5	68.5
2-3 PM	2150	0.0	OFF	2150	0	0.00	0	68.1	68.1	68.1
3-4 PM	2214	0.0	OFF	2214	0	0.00	0	68.0	68.0	68.0
4-5 PM	2121	0.0	OFF	2121	0	0.00	0	68.1	68.1	68.1
5-6 PM	2023	0.0	OFF	2023	0	0.00	0	68.2	68.2	68.2
6-7 PM	1469	0.0	OFF	1469	0	0.00	0	68.9	68.9	68.9
7-8 PM	974	0.0	3000	974	0	0.18	0	69.6	57.6	49.7
8-9 PM	868	0.0	3000	868	0	0.18	0	69.7	57.7	49.7
9-10 PM	1040	0.0	3000	1040	0	0.18	0	69.4	57.6	49.7
10-11 PM	824	0.0	3000	824	0	0.18	0	69.7	57.7	49.7
11PM-MID	669	0.0	3000	669	0	0.18	0	69.9	57.8	49.7

"OFF" INDICATES NO ROAD WORK (ALL LANES OPEN TO TRAFFIC)

----- SITE BREAKDOWN DELAYS -----	
BREAKDOWN DURATION (MINS)	0
RANGE OF QUEUE DELAY - MIN (VEH-H) MAX	0.0
AV BREAKDOWNS PER DAY	0.00
AV QUEUE DELAY/DAY (VEH-H)	0.0
AV TOTAL DELAY/DAY (VEH-H)	0.0

----- SITE ACCIDENT DELAYS -----	
BREAKDOWN DURATION (MINS)	0
RANGE OF QUEUE DELAY - MIN (VEH-H) MAX	0
AV BREAKDOWNS PER DAY	0
AV QUEUE DELAY/DAY (VEH-H)	0
AV TOTAL DELAY/DAY (VEH-H)	0

AVERAGE ACCIDENT NUMBERS (PIA/DAY)	
MAIN ROUTE WITHOUT WORKS	0.0049
MAIN ROUTE WITH WORKS	0.0043
'DIVERSION'	0.0000
PIA: Personal Injury Accidents	
IMPACTS ON ROAD USERS	
ROAD USER COSTS PER DAY	\$221
CONGESTED HOURS PER DAY*	0

*Delays Exceeding User-Specified Maximum

IH 794: IH 43 TO LINCOLN MEMORIAL DR (MILWAUKEE COUNTY)
NIGHTTIME CLOSURE
NO DIVERSION ROUTE (MAX QUEUE METHOD)

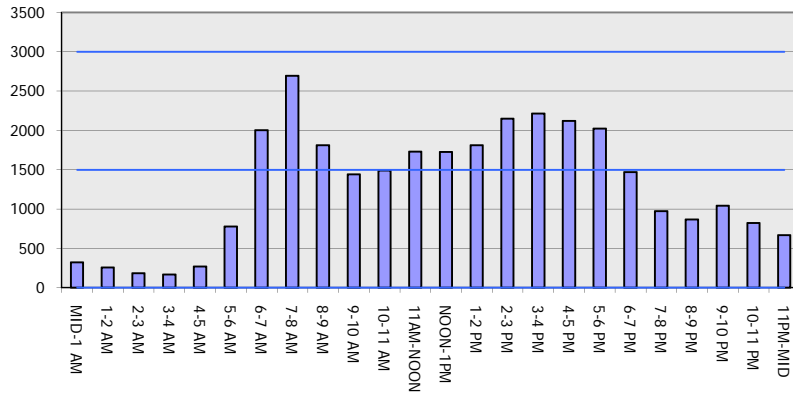
OCTOBER

Analyzed for 2009
 Construction Season

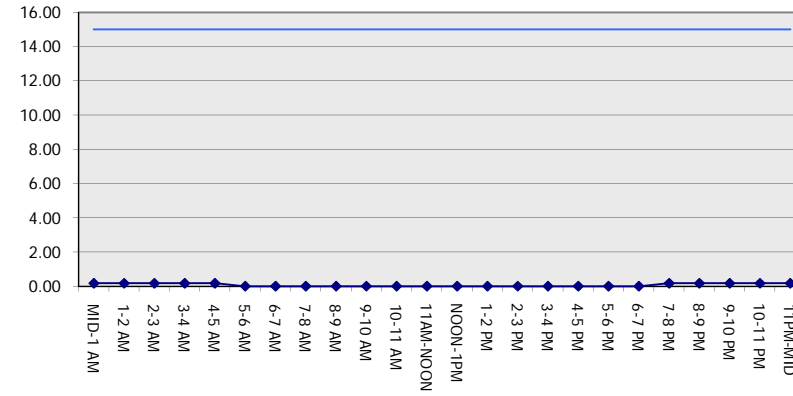
GRAPHICAL REPRESENTATION OF TRAFFIC MODEL INPUT AND OUTPUT

FRIDAY WESTBOUND DIRECTION

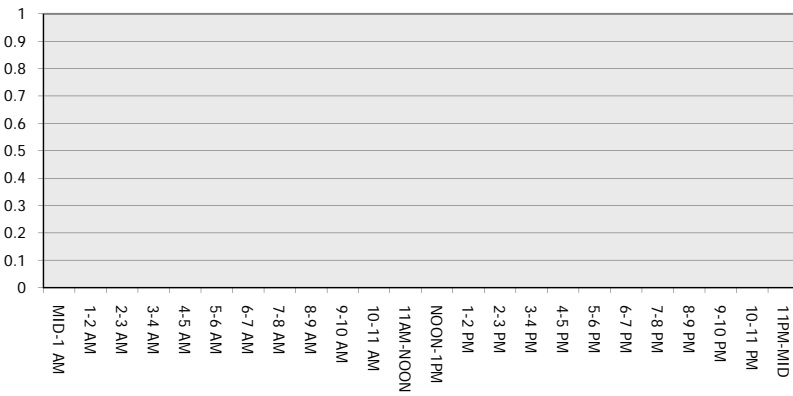
Main Route - Traffic Demand (Vehicles Per Hour)



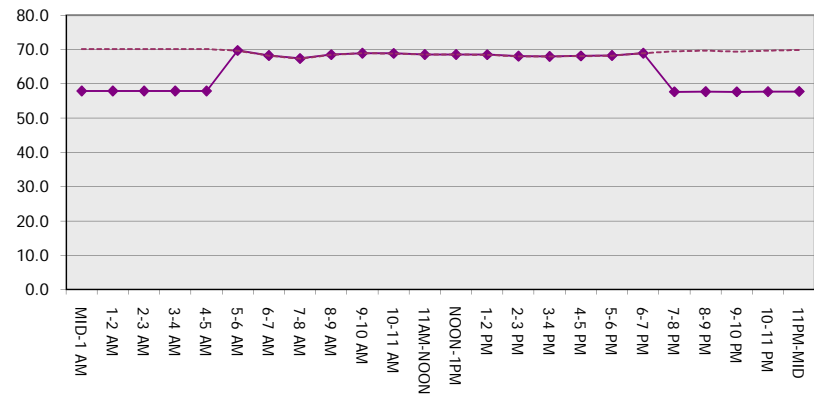
Main Route Average Delay Per Vehicle (Minutes)



Main Route - Average Queue Length (Vehicles)



Main Route - Average Speed (MPH)



IH 794: IH 43 TO LINCOLN MEMORIAL DR (MILWAUKEE COUNTY) NIGHTTIME CLOSURE NO DIVERSION ROUTE (MAX QUEUE METHOD)	OCTOBER
	Analyzed for 2009 Construction Season

SUMMARY OF TRAFFIC MODEL OUTPUT

FRIDAY EASTBOUND DIRECTION

TIME OF DAY	FLOWS AND CAPACITY IN VEH/HR						AVERAGE SPEEDS IN MPH			
	MAIN ROUTE		SITE CAPA CITY	FLOW		AV.DEL PER VEH (MINS)	AVERAGE QUEUE (VEH)	MAIN ROUTE		SITE
	DEMAND FLOW	PCT HEAVY		MAIN ROUTE	'DIVER TED'			WITHOUT WORK ZONE	WITH WORK ZONE	
MID-1 AM	442	0.0	3000	442	0	0.18	0	70.2	57.9	49.7
1-2 AM	289	0.0	3000	289	0	0.18	0	70.2	57.9	49.7
2-3 AM	218	0.0	3000	218	0	0.18	0	70.2	57.9	49.7
3-4 AM	275	0.0	3000	275	0	0.18	0	70.2	57.9	49.7
4-5 AM	568	0.0	3000	568	0	0.18	0	70.0	57.8	49.7
5-6 AM	2409	0.0	OFF	2409	0	0.00	0	67.8	67.8	67.8
6-7 AM	4300	0.0	OFF	4300	0	0.00	0	61.5	61.5	61.5
7-8 AM	4823	0.0	OFF	4823	0	0.00	0	57.9	57.9	57.9
8-9 AM	4476	0.0	OFF	4476	0	0.00	0	60.3	60.3	60.3
9-10 AM	3106	0.0	OFF	3106	0	0.00	0	66.9	66.9	66.9
10-11 AM	2641	0.0	OFF	2641	0	0.00	0	67.4	67.4	67.4
11AM-NOON	3026	0.0	OFF	3026	0	0.00	0	66.9	66.9	66.9
NOON-1PM	2930	0.0	OFF	2930	0	0.00	0	67.1	67.1	67.1
1-2 PM	3173	0.0	OFF	3173	0	0.00	0	66.8	66.8	66.8
2-3 PM	3291	0.0	OFF	3291	0	0.00	0	66.6	66.6	66.6
3-4 PM	3818	0.0	OFF	3818	0	0.00	0	64.8	64.8	64.8
4-5 PM	4305	0.0	OFF	4305	0	0.00	0	61.4	61.4	61.4
5-6 PM	4676	0.0	OFF	4676	0	0.00	0	58.9	58.9	58.9
6-7 PM	3910	0.0	OFF	3910	0	0.00	0	64.1	64.1	64.1
7-8 PM	2898	0.0	2999	2898	0	0.57	16	67.1	41.0	39.7
8-9 PM	2309	0.0	3000	2309	0	0.17	0	67.9	57.1	49.7
9-10 PM	2473	0.0	3000	2473	0	0.19	0	67.7	55.5	47.4
10-11 PM	1974	0.0	3000	1974	0	0.17	0	68.3	57.3	49.7
11PM-MID	1332	0.0	3000	1332	0	0.17	0	69.1	57.5	49.7

"OFF" INDICATES NO ROAD WORK (ALL LANES OPEN TO TRAFFIC)

----- SITE BREAKDOWN DELAYS -----	
BREAKDOWN DURATION (MINS)	0
RANGE OF QUEUE DELAY - MIN (VEH-H) MAX	0.0
AV BREAKDOWNS PER DAY	0.00
AV QUEUE DELAY/DAY (VEH-H)	0.0
AV TOTAL DELAY/DAY (VEH-H)	0.0

----- SITE ACCIDENT DELAYS -----	
BREAKDOWN DURATION (MINS)	0
RANGE OF QUEUE DELAY - MIN (VEH-H) MAX	0
AV BREAKDOWNS PER DAY	0
AV QUEUE DELAY/DAY (VEH-H)	0
AV TOTAL DELAY/DAY (VEH-H)	0

AVERAGE ACCIDENT NUMBERS (PIA/DAY)	
MAIN ROUTE WITHOUT WORKS	0.0101
MAIN ROUTE WITH WORKS	0.0087
'DIVERSION'	0.0000

PIA: Personal Injury Accidents

ECONOMIC IMPACT ON ROAD USERS	
ROAD USER COSTS PER DAY	\$749
CONGESTED HOURS PER DAY*	0

*Delays Exceeding User-Specified Maximum

**IH 794: IH 43 TO LINCOLN MEMORIAL DR (MILWAUKEE COUNTY)
 NIGHTTIME CLOSURE
 NO DIVERSION ROUTE (MAX QUEUE METHOD)**

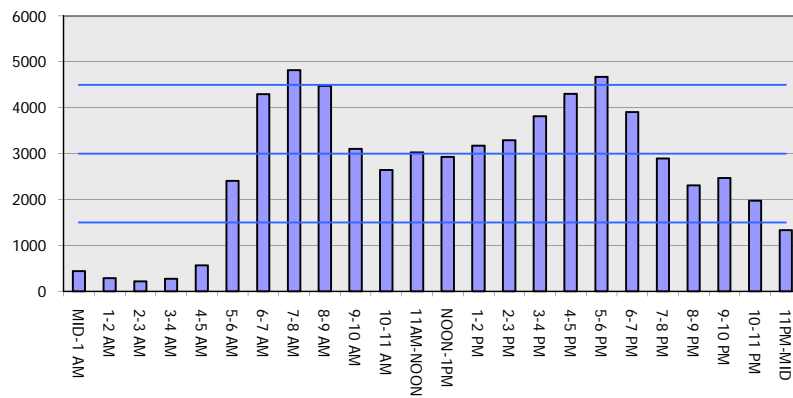
OCTOBER

Analyzed for 2009
 Construction Season

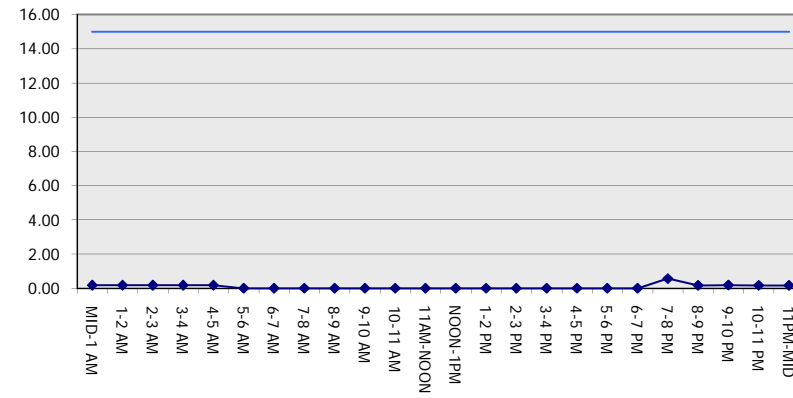
GRAPHICAL REPRESENTATION OF TRAFFIC MODEL INPUT AND OUTPUT

FRIDAY EASTBOUND DIRECTION

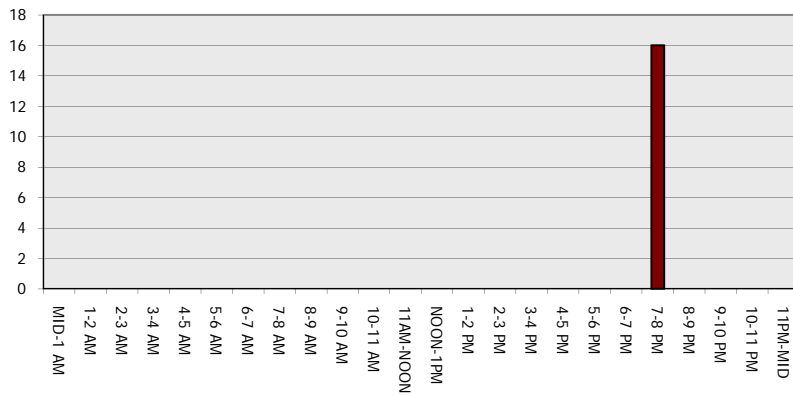
Main Route - Traffic Demand (Vehicles Per Hour)



Main Route Average Delay Per Vehicle (Minutes)



Main Route - Average Queue Length (Vehicles)



Main Route - Average Speed (MPH)

