

<b>IH 794: IH 43 TO LINCOLN MEMORIAL DR (MILWAUKEE COUNTY)                  NIGHTTIME 2 LANE CLOSURE                  NO DIVERSION ROUTE (MAX QUEUE METHOD)</b>	<b>AUGUST</b>
	Analyzed for 2009 Construction Season

**SUMMARY OF TRAFFIC MODEL OUTPUT**

SUNDAY WESTBOUND DIRECTION

TIME OF DAY	FLOWS AND CAPACITY IN VEH/HR						AVERAGE SPEEDS IN MPH				
	MAIN ROUTE		SITE CAPA CITY	FLOW		AV.DEL PER VEH (MINS)	AVERAGE QUEUE (VEH)	MAIN ROUTE		SITE	
	DEMAND FLOW	PCT HEAVY		MAIN ROUTE	'DIVER TED'			WITHOUT WORK ZONE	WITH WORK ZONE		
MID-1 AM	1545	0.0	1499	1545	0	0.89	11	68.8	34.1	30.8	
1-2 AM	1261	0.0	1500	1261	0	0.54	6	69.2	42.5	36.4	
2-3 AM	967	0.0	1500	967	0	0.30	0	69.6	51.8	41.8	
3-4 AM	392	0.0	1500	392	0	0.26	0	70.2	53.7	43.9	
4-5 AM	296	0.0	1500	296	0	0.26	0	70.2	54.0	44.3	
5-6 AM	453	0.0	1500	453	0	0.27	0	70.2	53.5	43.7	
6-7 AM	697	0.0	1500	697	0	0.28	0	69.9	52.7	42.8	
7-8 AM	948	0.0	1500	948	0	0.29	0	69.6	51.9	41.9	
8-9 AM	1356	0.0	1499	1356	0	0.46	0	69.1	45.3	34.3	
9-10 AM	1928	0.0	OFF	1928	0	0.00	0	68.3	68.3	68.3	
10-11 AM	2413	0.0	OFF	2413	0	0.00	0	67.8	67.8	67.8	
11AM-NOON	2878	0.0	OFF	2878	0	0.00	0	67.1	67.1	67.1	
NOON-1PM	2822	0.0	OFF	2822	0	0.00	0	67.3	67.3	67.3	
1-2 PM	2782	0.0	OFF	2782	0	0.00	0	67.3	67.3	67.3	
2-3 PM	2899	0.0	OFF	2899	0	0.00	0	67.1	67.1	67.1	
3-4 PM	2801	0.0	OFF	2801	0	0.00	0	67.3	67.3	67.3	
4-5 PM	2554	0.0	OFF	2554	0	0.00	0	67.6	67.6	67.6	
5-6 PM	2327	0.0	OFF	2327	0	0.00	0	67.8	67.8	67.8	
6-7 PM	2154	0.0	OFF	2154	0	0.00	0	68.1	68.1	68.1	
7-8 PM	2011	0.0	1499	1976	35	9.33+	261	68.2	7.5	30.8	
8-9 PM	1778	0.0	1499	1451	328	16.48+	417	68.5	5.5	30.8	
9-10 PM	1627	0.0	1499	1499	128	16.64+	421	68.7	5.4	30.8	
10-11 PM	1473	0.0	1500	1440	33	16.16+	408	68.9	5.5	30.8	
11PM-MID	895	0.0	1499	895	0	1.44	109	69.6	27.6	40.6	

"OFF" INDICATES NO ROAD WORK (ALL LANES OPEN TO TRAFFIC)

+ INDICATES QUEUEING EXCEEDS USER-SPECIFIED MAXIMUM LIMIT

BREAKDOWN DURATION (MINS)	0
RANGE OF QUEUE DELAY - MIN (VEH-H) MAX	0.0
AV BREAKDOWNS PER DAY	0.00
AV QUEUE DELAY/DAY (VEH-H)	0.0
AV TOTAL DELAY/DAY (VEH-H)	0.0

BREAKDOWN DURATION (MINS)	0
RANGE OF QUEUE DELAY - MIN (VEH-H) MAX	0
AV BREAKDOWNS PER DAY	0
AV QUEUE DELAY/DAY (VEH-H)	0
AV TOTAL DELAY/DAY (VEH-H)	0

MAIN ROUTE WITHOUT WORKS	0.0066
MAIN ROUTE WITH WORKS	0.0048
'DIVERSION'	0.0002
PIA: Personal Injury Accidents	
<b>IMPACTS ON ROAD USERS</b>	
ROAD USER COSTS PER DAY	\$27,843
CONGESTED HOURS PER DAY*	4

\*Delays Exceeding User-Specified Maximum

**IH 794: IH 43 TO LINCOLN MEMORIAL DR (MILWAUKEE COUNTY)**  
**NIGHTTIME 2 LANE CLOSURE**  
**NO DIVERSION ROUTE (MAX QUEUE METHOD)**

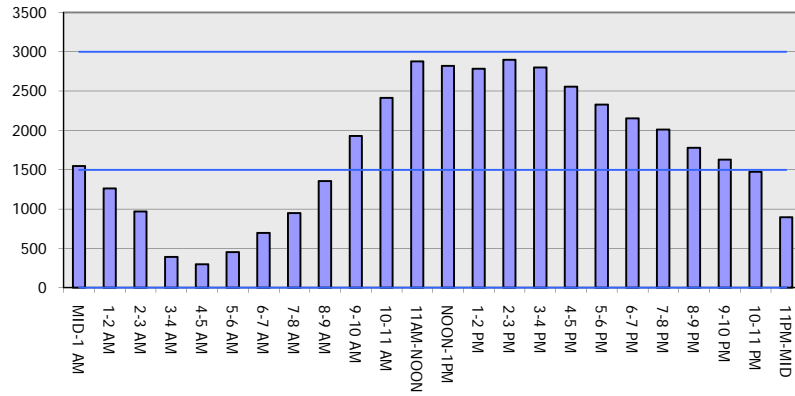
**AUGUST**

Analyzed for 2009  
 Construction Season

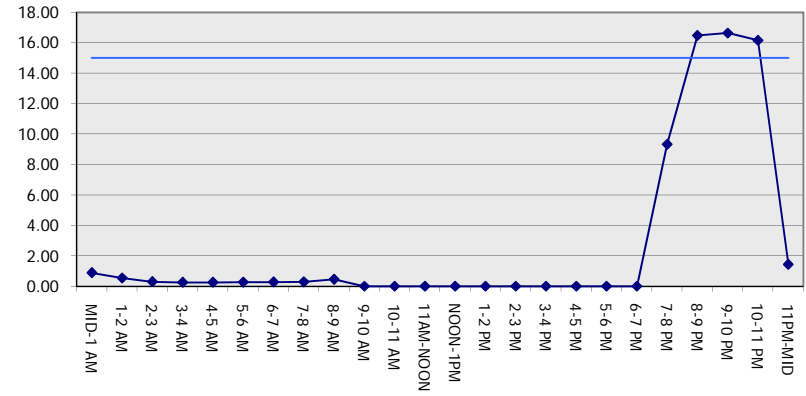
**GRAPHICAL REPRESENTATION OF TRAFFIC MODEL INPUT AND OUTPUT**

**SUNDAY WESTBOUND DIRECTION**

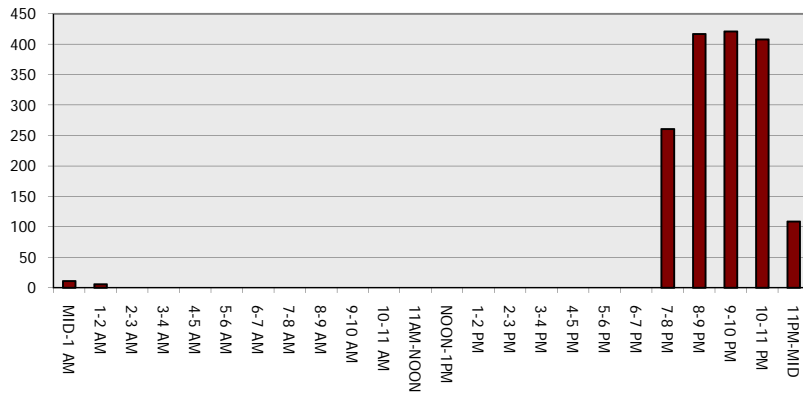
**Main Route - Traffic Demand (Vehicles Per Hour)**



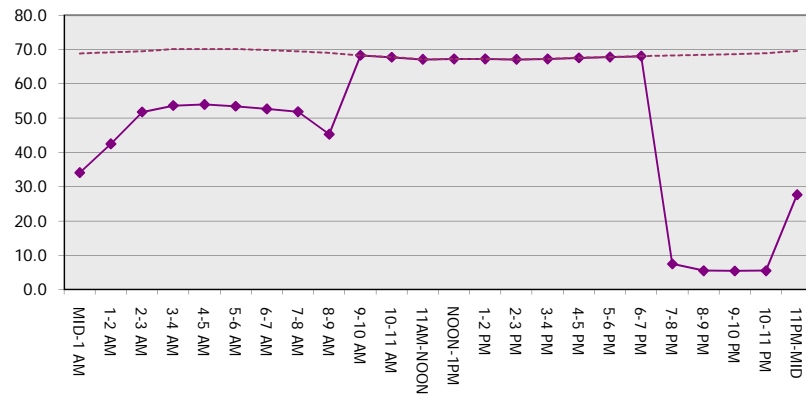
**Main Route Average Delay Per Vehicle (Minutes)**



**Main Route - Average Queue Length (Vehicles)**



**Main Route - Average Speed (MPH)**



<b>IH 794: IH 43 TO LINCOLN MEMORIAL DR (MILWAUKEE COUNTY)</b> <b>NIGHTTIME 2 LANE CLOSURE</b> <b>NO DIVERSION ROUTE (MAX QUEUE METHOD)</b>	<b>AUGUST</b>
	Analyzed for 2009 Construction Season

**SUMMARY OF TRAFFIC MODEL OUTPUT**

SUNDAY EASTBOUND DIRECTION

TIME OF DAY	FLOWS AND CAPACITY IN VEH/HR						AVERAGE SPEEDS IN MPH			
	MAIN ROUTE		SITE CAPA CITY	FLOW		AV.DEL PER VEH (MINS)	AVERAGE QUEUE (VEH)	MAIN ROUTE		SITE
	DEMAND FLOW	PCT HEAVY		MAIN ROUTE	'DIVER TED'			WITHOUT WORK ZONE	WITH WORK ZONE	
MID-1 AM	1012	0.0	1500	1012	0	0.30	0	69.5	51.7	41.6
1-2 AM	578	0.0	1500	578	0	0.27	0	70.0	53.0	43.2
2-3 AM	415	0.0	1500	415	0	0.26	0	70.2	53.6	43.8
3-4 AM	333	0.0	1500	333	0	0.26	0	70.2	53.8	44.2
4-5 AM	327	0.0	1500	327	0	0.26	0	70.2	53.8	44.2
5-6 AM	531	0.0	1500	531	0	0.27	0	70.0	53.2	43.4
6-7 AM	737	0.0	1500	737	0	0.28	0	69.8	52.5	42.6
7-8 AM	962	0.0	1499	962	0	0.29	0	69.6	51.9	41.8
8-9 AM	1795	0.0	1499	1795	0	3.71	115	68.5	13.9	30.8
9-10 AM	1978	0.0	OFF	1978	0	0.11	10	68.2	60.5	60.5
10-11 AM	2426	0.0	OFF	2426	0	0.00	0	67.7	67.7	67.7
11AM-NOON	2763	0.0	OFF	2763	0	0.00	0	67.3	67.3	67.3
NOON-1PM	2920	0.0	OFF	2920	0	0.00	0	67.1	67.1	67.1
1-2 PM	2926	0.0	OFF	2926	0	0.00	0	67.1	67.1	67.1
2-3 PM	2916	0.0	OFF	2916	0	0.00	0	67.1	67.1	67.1
3-4 PM	3028	0.0	OFF	3028	0	0.00	0	66.9	66.9	66.9
4-5 PM	2964	0.0	OFF	2964	0	0.00	0	67.1	67.1	67.1
5-6 PM	2982	0.0	OFF	2982	0	0.00	0	67.0	67.0	67.0
6-7 PM	2663	0.0	OFF	2663	0	0.00	0	67.4	67.4	67.4
7-8 PM	2352	0.0	1499	1960	392	12.51+	326	67.8	6.3	30.8
8-9 PM	2072	0.0	1499	1495	577	16.66+	422	68.2	5.4	30.8
9-10 PM	1705	0.0	1499	1456	249	16.49+	417	68.6	5.5	30.8
10-11 PM	1201	0.0	1499	1201	0	11.16+	293	69.2	6.6	32.5
11PM-MID	684	0.0	1500	684	0	0.39	7	69.9	48.1	42.8

"OFF" INDICATES NO ROAD WORK (ALL LANES OPEN TO TRAFFIC)

+ INDICATES QUEUEING EXCEEDS USER-SPECIFIED MAXIMUM LIMIT

BREAKDOWN DURATION (MINS)	0
RANGE OF QUEUE DELAY - MIN (VEH-H) MAX	0.0
AV BREAKDOWNS PER DAY	0.00
AV QUEUE DELAY/DAY (VEH-H)	0.0
AV TOTAL DELAY/DAY (VEH-H)	0.0

BREAKDOWN DURATION (MINS)	0
RANGE OF QUEUE DELAY - MIN (VEH-H) MAX	0
AV BREAKDOWNS PER DAY	0
AV QUEUE DELAY/DAY (VEH-H)	0
AV TOTAL DELAY/DAY (VEH-H)	0

MAIN ROUTE WITHOUT WORKS	0.0067
MAIN ROUTE WITH WORKS	0.0051
'DIVERSION'	0.0004

PIA: Personal Injury Accidents

ROAD USER COSTS PER DAY	\$30,522
CONGESTED HOURS PER DAY*	4

\*Delays Exceeding User-Specified Maximum

**IH 794: IH 43 TO LINCOLN MEMORIAL DR (MILWAUKEE COUNTY)  
 NIGHTTIME 2 LANE CLOSURE  
 NO DIVERSION ROUTE (MAX QUEUE METHOD)**

**AUGUST**  
 Analyzed for 2009  
 Construction Season

**GRAPHICAL REPRESENTATION OF TRAFFIC MODEL INPUT AND OUTPUT**  
**SUNDAY EASTBOUND DIRECTION**

