

IH 794: IH 43 TO LINCOLN MEMORIAL DR (MILWAUKEE COUNTY) NIGHTTIME 2 LANE CLOSURE NO DIVERSION ROUTE (MAX QUEUE METHOD)	AUGUST
	Analyzed for 2009 Construction Season

SUMMARY OF TRAFFIC MODEL OUTPUT

MON-THUR WESTBOUND DIRECTION

TIME OF DAY	FLOWS AND CAPACITY IN VEH/HR						AVERAGE SPEEDS IN MPH				
	MAIN ROUTE		SITE CAPA CITY	FLOW		AV.DEL PER VEH (MINS)	AVERAGE QUEUE (VEH)	MAIN ROUTE		SITE	
	DEMAND FLOW	PCT HEAVY		MAIN ROUTE	'DIVER TED'			WITHOUT WORK ZONE	WITH WORK ZONE		
MID-1 AM	537	0.0	1500	537	0	0.27	0	70.0	53.2	43.3	
1-2 AM	399	0.0	1500	399	0	0.26	0	70.2	53.7	43.9	
2-3 AM	257	0.0	1500	257	0	0.25	0	70.2	54.0	44.5	
3-4 AM	260	0.0	1500	260	0	0.26	0	70.2	54.0	44.5	
4-5 AM	586	0.0	1500	586	0	0.27	0	70.0	53.0	43.2	
5-6 AM	1745	0.0	OFF	1745	0	0.00	0	68.6	68.6	68.6	
6-7 AM	3730	0.0	OFF	3730	0	0.00	0	65.4	65.4	65.4	
7-8 AM	4313	0.0	OFF	4313	0	0.00	0	61.4	61.4	61.4	
8-9 AM	2959	0.0	OFF	2959	0	0.00	0	67.1	67.1	67.1	
9-10 AM	2418	0.0	OFF	2418	0	0.00	0	67.8	67.8	67.8	
10-11 AM	2592	0.0	OFF	2592	0	0.00	0	67.5	67.5	67.5	
11AM-NOON	2983	0.0	OFF	2983	0	0.00	0	67.0	67.0	67.0	
NOON-1PM	2985	0.0	OFF	2985	0	0.00	0	67.0	67.0	67.0	
1-2 PM	3312	0.0	OFF	3312	0	0.00	0	66.6	66.6	66.6	
2-3 PM	4516	0.0	OFF	4516	0	0.00	0	60.0	60.0	60.0	
3-4 PM	5109	0.0	OFF	5109	0	0.00	0	56.0	56.0	56.0	
4-5 PM	5126	0.0	OFF	5126	0	0.00	0	55.8	55.8	55.8	
5-6 PM	4488	0.0	OFF	4488	0	0.00	0	60.2	60.2	60.2	
6-7 PM	3107	0.0	OFF	3107	0	0.00	0	66.9	66.9	66.9	
7-8 PM	2365	0.0	1499	1983	382	12.86+	333	67.8	6.1	30.8	
8-9 PM	2196	0.0	1499	1492	705	16.67+	422	68.0	5.4	30.8	
9-10 PM	1967	0.0	1499	1467	500	16.56+	419	68.3	5.4	30.8	
10-11 PM	1455	0.0	1499	1388	68	15.62+	395	68.9	5.6	30.8	
11PM-MID	913	0.0	1499	913	0	1.58	112	69.6	26.1	38.9	

"OFF" INDICATES NO ROAD WORK (ALL LANES OPEN TO TRAFFIC)

+ INDICATES QUEUEING EXCEEDS USER-SPECIFIED MAXIMUM LIMIT

----- SITE BREAKDOWN DELAYS -----	
BREAKDOWN DURATION (MINS)	0
RANGE OF QUEUE DELAY - MIN (VEH-H) MAX	0.0
AV BREAKDOWNS PER DAY	0.00
AV QUEUE DELAY/DAY (VEH-H)	0.0
AV TOTAL DELAY/DAY (VEH-H)	0.0

----- SITE ACCIDENT DELAYS -----	
BREAKDOWN DURATION (MINS)	0
RANGE OF QUEUE DELAY - MIN (VEH-H) MAX	0
AV BREAKDOWNS PER DAY	0
AV QUEUE DELAY/DAY (VEH-H)	0
AV TOTAL DELAY/DAY (VEH-H)	0

AVERAGE ACCIDENT NUMBERS (PIA/DAY)	
MAIN ROUTE WITHOUT WORKS	0.0096
MAIN ROUTE WITH WORKS	0.0083
'DIVERSION'	0.0006
<small>PIA: Personal Injury Accidents</small>	
IMPACTS ON ROAD USERS	
ROAD USER COSTS PER DAY	\$29,099
CONGESTED HOURS PER DAY*	4

*Delays Exceeding User-Specified Maximum

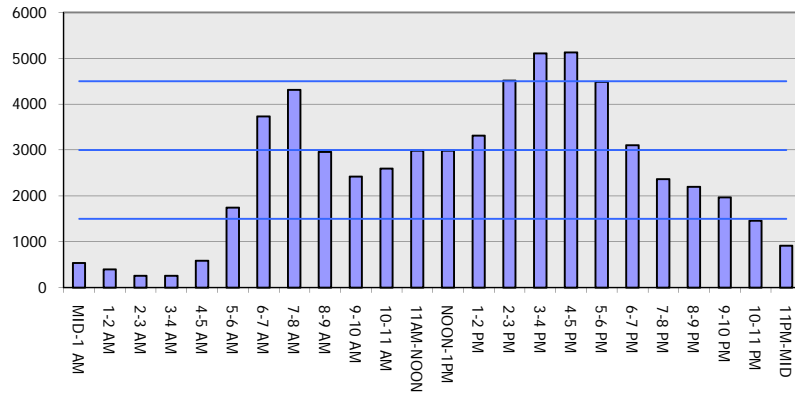
IH 794: IH 43 TO LINCOLN MEMORIAL DR (MILWAUKEE COUNTY)
NIGHTTIME 2 LANE CLOSURE
NO DIVERSION ROUTE (MAX QUEUE METHOD)

AUGUST

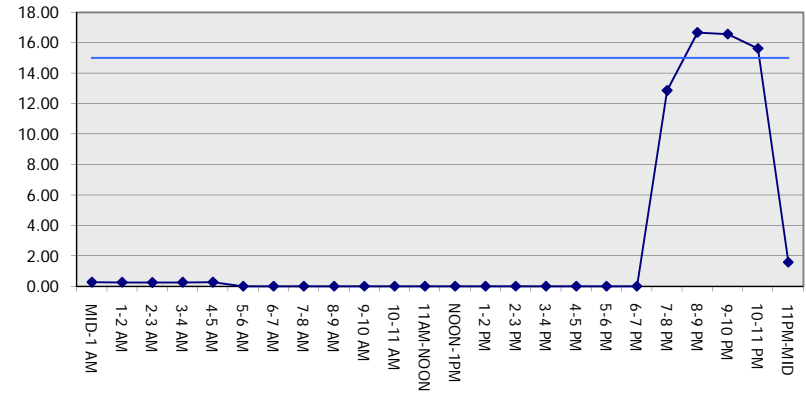
Analyzed for 2009
 Construction Season

GRAPHICAL REPRESENTATION OF TRAFFIC MODEL INPUT AND OUTPUT
MON-THUR WESTBOUND DIRECTION

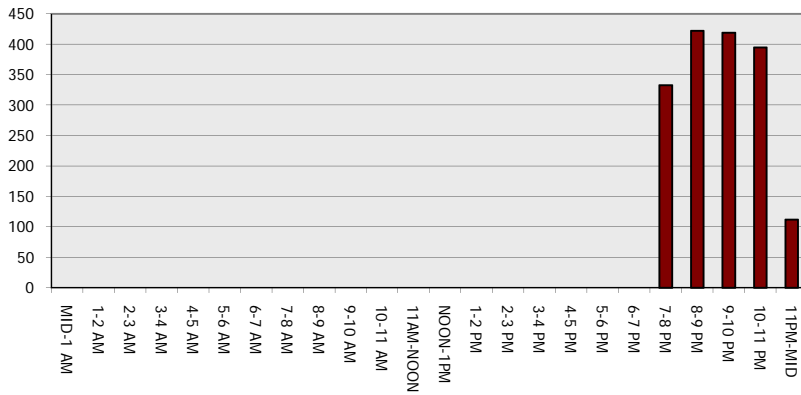
Main Route - Traffic Demand (Vehicles Per Hour)



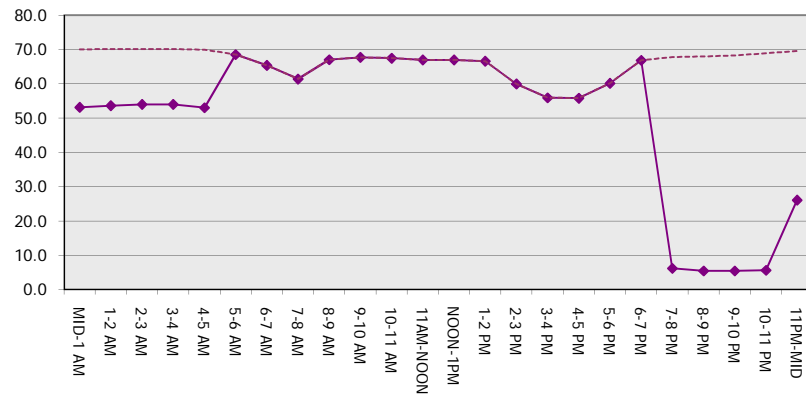
Main Route Average Delay Per Vehicle (Minutes)



Main Route - Average Queue Length (Vehicles)



Main Route - Average Speed (MPH)



IH 794: IH 43 TO LINCOLN MEMORIAL DR (MILWAUKEE COUNTY) NIGHTTIME 2 LANE CLOSURE NO DIVERSION ROUTE (MAX QUEUE METHOD)	AUGUST
	Analyzed for 2009 Construction Season

SUMMARY OF TRAFFIC MODEL OUTPUT

MON-THUR EASTBOUND DIRECTION

TIME OF DAY	FLOWS AND CAPACITY IN VEH/HR							AVERAGE SPEEDS IN MPH		
	MAIN ROUTE		SITE CAPA CITY	FLOW		AV.DEL PER VEH (MINS)	AVERAGE QUEUE (VEH)	MAIN ROUTE		SITE
	DEMAND FLOW	PCT HEAVY		MAIN ROUTE	'DIVER TED'			WITHOUT WORK ZONE	WITH WORK ZONE	
MID-1 AM	367	0.0	1500	367	0	0.26	0	70.2	53.7	44.0
1-2 AM	244	0.0	1500	244	0	0.25	0	70.2	54.1	44.5
2-3 AM	205	0.0	1500	205	0	0.25	0	70.2	54.2	44.6
3-4 AM	287	0.0	1500	287	0	0.26	0	70.2	54.0	44.3
4-5 AM	823	0.0	1500	823	0	0.29	0	69.7	52.3	42.3
5-6 AM	2999	0.0	OFF	2999	0	0.00	0	67.0	67.0	67.0
6-7 AM	5105	0.0	OFF	5105	0	0.00	0	56.0	56.0	56.0
7-8 AM	5464	0.0	OFF	5464	0	0.00	0	53.5	53.5	53.5
8-9 AM	4493	0.0	OFF	4493	0	0.00	0	60.2	60.2	60.2
9-10 AM	3195	0.0	OFF	3195	0	0.00	0	66.8	66.8	66.8
10-11 AM	2969	0.0	OFF	2969	0	0.00	0	67.1	67.1	67.1
11AM-NOON	3097	0.0	OFF	3097	0	0.00	0	66.9	66.9	66.9
NOON-1PM	3147	0.0	OFF	3147	0	0.00	0	66.8	66.8	66.8
1-2 PM	3097	0.0	OFF	3097	0	0.00	0	66.9	66.9	66.9
2-3 PM	3155	0.0	OFF	3155	0	0.00	0	66.8	66.8	66.8
3-4 PM	3514	0.0	OFF	3514	0	0.00	0	66.4	66.4	66.4
4-5 PM	4089	0.0	OFF	4089	0	0.00	0	62.9	62.9	62.9
5-6 PM	4076	0.0	OFF	4076	0	0.00	0	63.0	63.0	63.0
6-7 PM	3299	0.0	OFF	3299	0	0.00	0	66.6	66.6	66.6
7-8 PM	2513	0.0	1499	1902	611	13.64+	349	67.6	6.0	32.0
8-9 PM	2263	0.0	1499	1502	761	16.67+	422	67.9	5.4	30.8
9-10 PM	1985	0.0	1500	1502	483	16.66+	421	68.2	5.4	30.8
10-11 PM	1445	0.0	1500	1404	42	15.42+	390	68.9	5.6	30.8
11PM-MID	819	0.0	1499	819	0	1.21	87	69.7	30.0	40.7

"OFF" INDICATES NO ROAD WORK (ALL LANES OPEN TO TRAFFIC)

+ INDICATES QUEUEING EXCEEDS USER-SPECIFIED MAXIMUM LIMIT

BREAKDOWN DURATION (MINS)	0
RANGE OF QUEUE DELAY - MIN (VEH-H) MAX	0.0
AV BREAKDOWNS PER DAY	0.00
AV QUEUE DELAY/DAY (VEH-H)	0.0
AV TOTAL DELAY/DAY (VEH-H)	0.0

BREAKDOWN DURATION (MINS)	0
RANGE OF QUEUE DELAY - MIN (VEH-H) MAX	0
AV BREAKDOWNS PER DAY	0
AV QUEUE DELAY/DAY (VEH-H)	0
AV TOTAL DELAY/DAY (VEH-H)	0

MAIN ROUTE WITHOUT WORKS	0.0100
MAIN ROUTE WITH WORKS	0.0087
'DIVERSION'	0.0007

PIA: Personal Injury Accidents

ROAD USER COSTS PER DAY	\$30,167
CONGESTED HOURS PER DAY*	4

*Delays Exceeding User-Specified Maximum

IH 794: IH 43 TO LINCOLN MEMORIAL DR (MILWAUKEE COUNTY)
NIGHTTIME 2 LANE CLOSURE
NO DIVERSION ROUTE (MAX QUEUE METHOD)

AUGUST

Analyzed for 2009
 Construction Season

GRAPHICAL REPRESENTATION OF TRAFFIC MODEL INPUT AND OUTPUT

MON-THUR EASTBOUND DIRECTION

