

**IH 43/894: HALE INTERCHANGE TO STH 27 (MILWAUKEE COUNTY)
NIGHTTIME 2 LANE CLOSURE
NO DIVERSION ROUTE (MAX QUEUE METHOD)**

OCTOBER
Analyzed for 2009
Construction Season

SUMMARY OF TRAFFIC MODEL OUTPUT
SUNDAY SOUTHBOUND DIRECTION

TIME OF DAY	FLOWS AND CAPACITY IN VEH/HR							AVERAGE SPEEDS IN MPH			
	MAIN ROUTE		SITE CAPA CITY	FLOW		AV.DEL PER VEH (MINS)	AVERAGE QUEUE (VEH)	MAIN ROUTE		SITE	
	DEMAND FLOW	PCT HEAVY		MAIN ROUTE	'DIVER TED'			WITHOUT WORK ZONE	WITH WORK ZONE		
MID-1 AM	1053	0.0	1500	1053	0	0.59	0	69.4	59.9	41.5	
1-2 AM	592	0.0	1500	592	0	0.54	0	70.0	61.0	43.2	
2-3 AM	547	0.0	1500	547	0	0.54	0	70.0	61.1	43.3	
3-4 AM	332	0.0	1500	332	0	0.51	0	70.2	61.6	44.2	
4-5 AM	311	0.0	1500	311	0	0.51	0	70.2	61.6	44.2	
5-6 AM	540	0.0	1500	540	0	0.54	0	70.0	61.1	43.3	
6-7 AM	872	0.0	1500	872	0	0.57	0	69.7	60.3	42.1	
7-8 AM	1159	0.0	1499	1159	0	0.69	0	69.3	58.5	39.1	
8-9 AM	1680	0.0	1499	1680	0	2.60	51	68.6	40.6	30.8	
9-10 AM	2399	0.0	OFF	2399	0	0.06	4	67.8	66.8	66.8	
10-11 AM	3233	0.0	OFF	3233	0	0.00	0	66.7	66.7	66.7	
11AM-NOON	3796	0.0	OFF	3796	0	0.00	0	64.9	64.9	64.9	
NOON-1PM	4119	0.0	OFF	4119	0	0.00	0	62.7	62.7	62.7	
1-2 PM	3971	0.0	OFF	3971	0	0.00	0	63.7	63.7	63.7	
2-3 PM	3854	0.0	OFF	3854	0	0.00	0	64.5	64.5	64.5	
3-4 PM	4088	0.0	OFF	4088	0	0.00	0	62.9	62.9	62.9	
4-5 PM	3987	0.0	OFF	3987	0	0.00	0	63.6	63.6	63.6	
5-6 PM	3641	0.0	OFF	3641	0	0.00	0	66.0	66.0	66.0	
6-7 PM	3339	0.0	OFF	3339	0	0.00	0	66.6	66.6	66.6	
7-8 PM	2808	0.0	1499	1574	1234	15.12+	380	67.3	13.6	36.4	
8-9 PM	2028	0.0	1499	1827	201	12.41+	318	68.2	15.9	30.8	
9-10 PM	1801	0.0	1500	1500	301	16.36+	400	68.5	12.8	30.8	
10-11 PM	1370	0.0	1499	1370	0	14.91+	364	69.1	13.8	30.8	
11PM-MID	891	0.0	1500	891	0	1.98	64	69.6	45.3	41.2	

"OFF" INDICATES NO ROAD WORK (ALL LANES OPEN TO TRAFFIC)

+ INDICATES QUEUEING EXCEEDS USER-SPECIFIED MAXIMUM LIMIT

----- SITE BREAKDOWN DELAYS -----	
BREAKDOWN DURATION (MINS)	0
RANGE OF QUEUE DELAY - MIN (VEH-H) MAX	0.0
AV BREAKDOWNS PER DAY	0.00
AV QUEUE DELAY/DAY (VEH-H)	0.0
AV TOTAL DELAY/DAY (VEH-H)	0.0

----- SITE ACCIDENT DELAYS -----	
BREAKDOWN DURATION (MINS)	0
RANGE OF QUEUE DELAY - MIN (VEH-H) MAX	0
AV BREAKDOWNS PER DAY	0
AV QUEUE DELAY/DAY (VEH-H)	0
AV TOTAL DELAY/DAY (VEH-H)	0

AVERAGE ACCIDENT NUMBERS (PIA/DAY)	
MAIN ROUTE WITHOUT WORKS	0.0359
MAIN ROUTE WITH WORKS	0.0337
'DIVERSION'	0.0028
PIA: Personal Injury Accidents	
IMPACTS ON ROAD USERS	
ROAD USER COSTS PER DAY	\$32,717
CONGESTED HOURS PER DAY*	4

*Delays Exceeding User-Specified Maximum

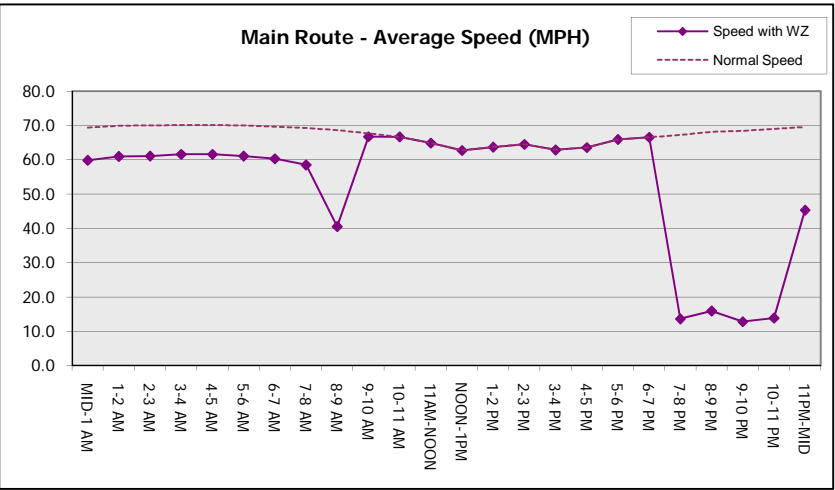
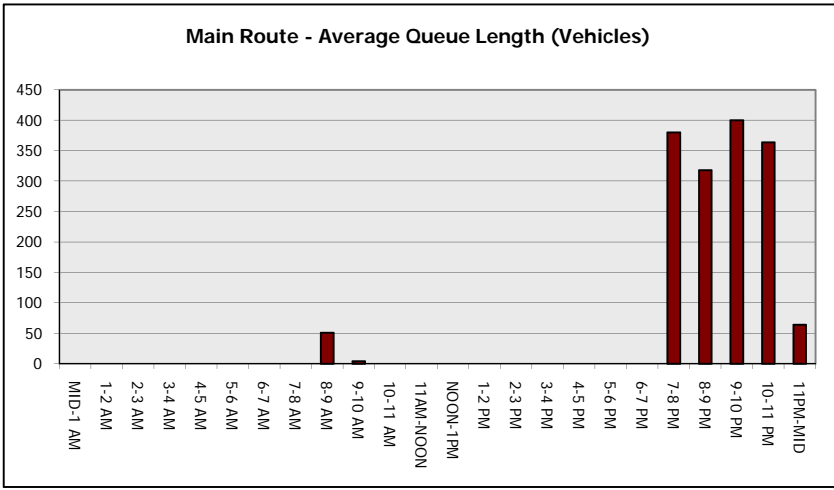
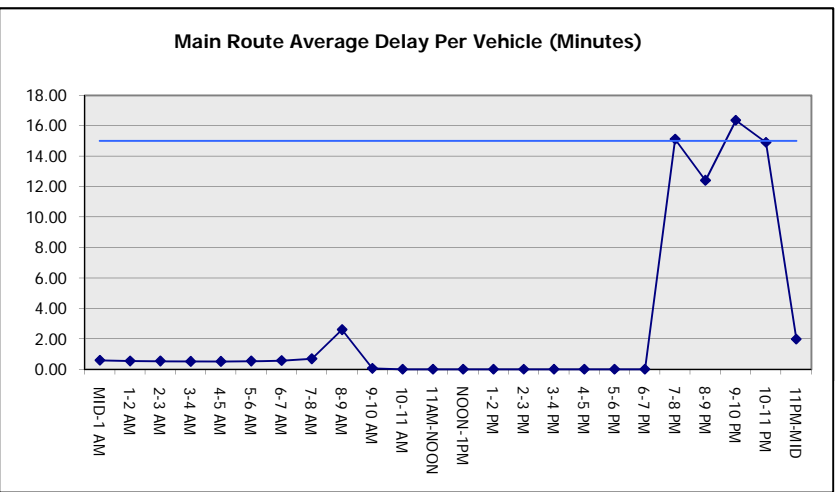
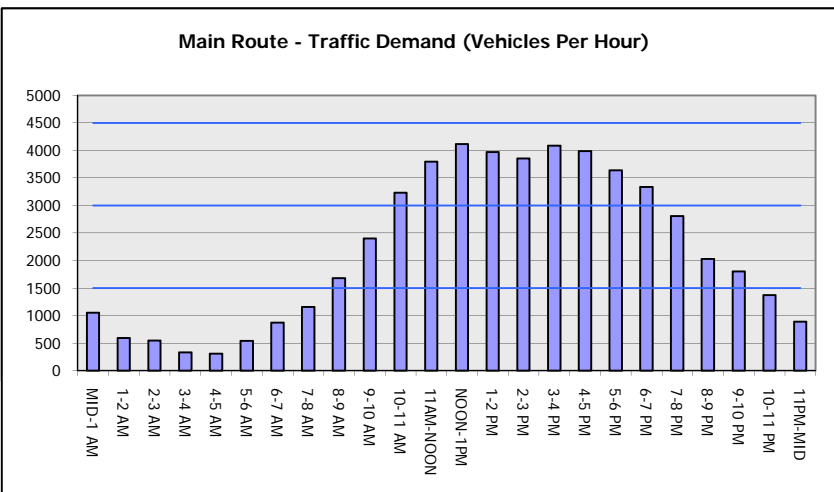
IH 43/894: HALE INTERCHANGE TO STH 27 (MILWAUKEE COUNTY)
NIGHTTIME 2 LANE CLOSURE
NO DIVERSION ROUTE (MAX QUEUE METHOD)

OCTOBER

Analyzed for 2009
 Construction Season

GRAPHICAL REPRESENTATION OF TRAFFIC MODEL INPUT AND OUTPUT

SUNDAY SOUTHBOUND DIRECTION



IH 43/894: HALE INTERCHANGE TO STH 27 (MILWAUKEE COUNTY) NIGHTTIME 2 LANE CLOSURE NO DIVERSION ROUTE (MAX QUEUE METHOD)	OCTOBER
	Analyzed for 2009 Construction Season

SUMMARY OF TRAFFIC MODEL OUTPUT

SUNDAY NORTHBOUND DIRECTION

TIME OF DAY	FLOWS AND CAPACITY IN VEH/HR						AVERAGE SPEEDS IN MPH			
	MAIN ROUTE		SITE CAPA CITY	FLOW		AV.DEL PER VEH (MINS)	AVERAGE QUEUE (VEH)	MAIN ROUTE		SITE
	DEMAND FLOW	PCT HEAVY		MAIN ROUTE	'DIVER TED'			WITHOUT WORK ZONE	WITH WORK ZONE	
MID-1 AM	892	0.0	1500	892	0	0.58	0	69.6	60.2	42.0
1-2 AM	520	0.0	1500	520	0	0.54	0	70.1	61.2	43.4
2-3 AM	431	0.0	1500	431	0	0.53	0	70.2	61.4	43.8
3-4 AM	315	0.0	1500	315	0	0.51	0	70.2	61.6	44.2
4-5 AM	396	0.0	1500	396	0	0.52	0	70.2	61.5	43.9
5-6 AM	695	0.0	1500	695	0	0.55	0	69.9	60.7	42.8
6-7 AM	871	0.0	1500	871	0	0.57	0	69.7	60.3	42.2
7-8 AM	1219	0.0	1499	1219	0	0.73	0	69.2	57.9	38.1
8-9 AM	1672	0.0	1499	1672	0	2.55	48	68.7	40.9	30.8
9-10 AM	2402	0.0	OFF	2402	0	0.05	4	67.8	66.8	66.8
10-11 AM	2991	0.0	OFF	2991	0	0.00	0	67.0	67.0	67.0
11AM-NOON	3563	0.0	OFF	3563	0	0.00	0	66.3	66.3	66.3
NOON-1PM	4126	0.0	OFF	4126	0	0.00	0	62.7	62.7	62.7
1-2 PM	4234	0.0	OFF	4234	0	0.00	0	61.9	61.9	61.9
2-3 PM	4268	0.0	OFF	4268	0	0.00	0	61.7	61.7	61.7
3-4 PM	4524	0.0	OFF	4524	0	0.00	0	59.9	59.9	59.9
4-5 PM	4316	0.0	OFF	4316	0	0.00	0	61.4	61.4	61.4
5-6 PM	3844	0.0	OFF	3844	0	0.00	0	64.6	64.6	64.6
6-7 PM	3726	0.0	OFF	3726	0	0.00	0	65.4	65.4	65.4
7-8 PM	2996	0.0	1499	1550	1446	16.47+	412	67.0	12.7	36.6
8-9 PM	2162	0.0	1499	1872	290	12.78+	325	68.1	15.6	30.8
9-10 PM	1585	0.0	1499	1446	139	16.14+	394	68.7	13.0	30.8
10-11 PM	1119	0.0	1499	1119	0	6.93	202	69.4	24.2	34.8
11PM-MID	789	0.0	1500	789	0	0.56	0	69.7	60.5	42.4

"OFF" INDICATES NO ROAD WORK (ALL LANES OPEN TO TRAFFIC)

+ INDICATES QUEUEING EXCEEDS USER-SPECIFIED MAXIMUM LIMIT

BREAKDOWN DURATION (MINS)	0
RANGE OF QUEUE DELAY - MIN (VEH-H) MAX	0.0
AV BREAKDOWNS PER DAY	0.00
AV QUEUE DELAY/DAY (VEH-H)	0.0
AV TOTAL DELAY/DAY (VEH-H)	0.0

BREAKDOWN DURATION (MINS)	0
RANGE OF QUEUE DELAY - MIN (VEH-H) MAX	0
AV BREAKDOWNS PER DAY	0
AV QUEUE DELAY/DAY (VEH-H)	0
AV TOTAL DELAY/DAY (VEH-H)	0

MAIN ROUTE WITHOUT WORKS	0.0367
MAIN ROUTE WITH WORKS	0.0345
'DIVERSION'	0.0030

PIA: Personal Injury Accidents

ROAD USER COSTS PER DAY	\$30,489
CONGESTED HOURS PER DAY*	3

*Delays Exceeding User-Specified Maximum

IH 43/894: HALE INTERCHANGE TO STH 27 (MILWAUKEE COUNTY)
NIGHTTIME 2 LANE CLOSURE
NO DIVERSION ROUTE (MAX QUEUE METHOD)

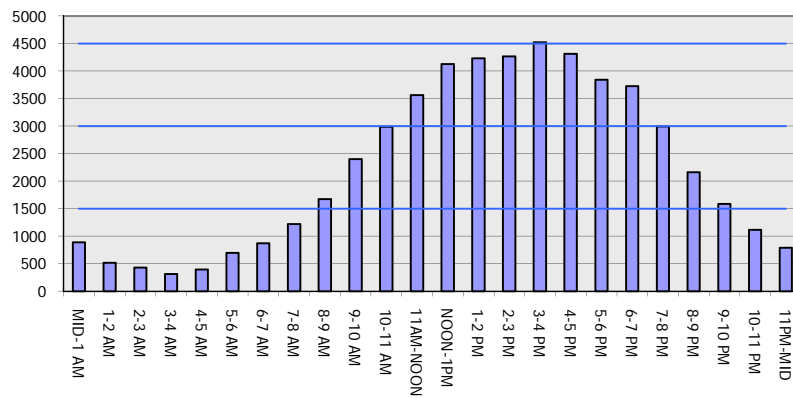
OCTOBER

Analyzed for 2009
 Construction Season

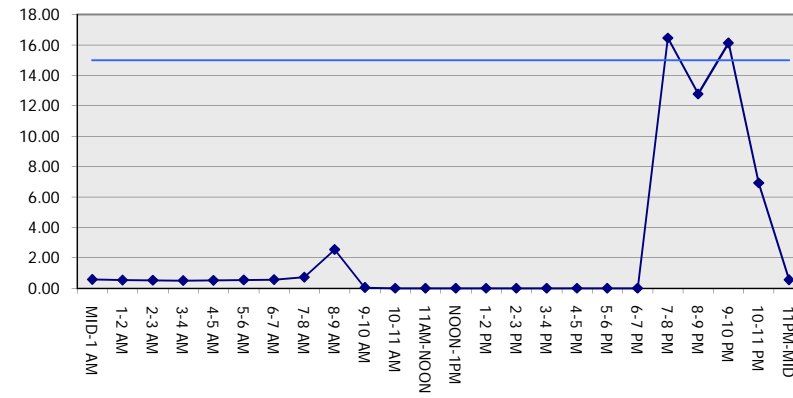
GRAPHICAL REPRESENTATION OF TRAFFIC MODEL INPUT AND OUTPUT

SUNDAY NORTHBOUND DIRECTION

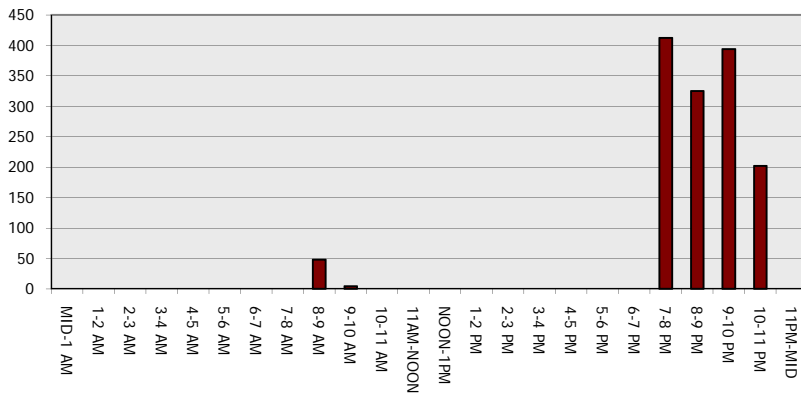
Main Route - Traffic Demand (Vehicles Per Hour)



Main Route Average Delay Per Vehicle (Minutes)



Main Route - Average Queue Length (Vehicles)



Main Route - Average Speed (MPH)

