

IH 43/894: HALE INTERCHANGE TO STH 27 (MILWAUKEE COUNTY) NIGHTTIME CLOSURE NO DIVERSION ROUTE (MAX QUEUE METHOD)	OCTOBER
	Analyzed for 2009 Construction Season

SUMMARY OF TRAFFIC MODEL OUTPUT

SUNDAY SOUTHBOUND DIRECTION

TIME OF DAY	FLOWS AND CAPACITY IN VEH/HR						AVERAGE SPEEDS IN MPH			
	MAIN ROUTE		SITE CAPA CITY	FLOW		AV.DEL PER VEH (MINS)	AVERAGE QUEUE (VEH)	MAIN ROUTE		SITE
	DEMAND FLOW	PCT HEAVY		MAIN ROUTE	'DIVER TED'			WITHOUT WORK ZONE	WITH WORK ZONE	
MID-1 AM	1053	0.0	3000	1053	0	0.35	0	69.4	63.5	49.7
1-2 AM	592	0.0	3000	592	0	0.36	0	70.0	63.8	49.7
2-3 AM	547	0.0	3000	547	0	0.36	0	70.0	63.8	49.7
3-4 AM	332	0.0	3000	332	0	0.36	0	70.2	63.9	49.7
4-5 AM	311	0.0	3000	311	0	0.36	0	70.2	63.9	49.7
5-6 AM	540	0.0	3000	540	0	0.36	0	70.0	63.8	49.7
6-7 AM	872	0.0	3000	872	0	0.35	0	69.7	63.6	49.7
7-8 AM	1159	0.0	3000	1159	0	0.35	0	69.3	63.3	49.7
8-9 AM	1680	0.0	3000	1680	0	0.34	0	68.6	63.0	49.7
9-10 AM	2399	0.0	OFF	2399	0	0.00	0	67.8	67.8	67.8
10-11 AM	3233	0.0	OFF	3233	0	0.00	0	66.7	66.7	66.7
11AM-NOON	3796	0.0	OFF	3796	0	0.00	0	64.9	64.9	64.9
NOON-1PM	4119	0.0	OFF	4119	0	0.00	0	62.7	62.7	62.7
1-2 PM	3971	0.0	OFF	3971	0	0.00	0	63.7	63.7	63.7
2-3 PM	3854	0.0	OFF	3854	0	0.00	0	64.5	64.5	64.5
3-4 PM	4088	0.0	OFF	4088	0	0.00	0	62.9	62.9	62.9
4-5 PM	3987	0.0	OFF	3987	0	0.00	0	63.6	63.6	63.6
5-6 PM	3641	0.0	OFF	3641	0	0.00	0	66.0	66.0	66.0
6-7 PM	3339	0.0	OFF	3339	0	0.00	0	66.6	66.6	66.6
7-8 PM	2808	0.0	3000	2808	0	0.60	0	67.3	58.1	40.4
8-9 PM	2028	0.0	3000	2028	0	0.33	0	68.2	62.7	49.7
9-10 PM	1801	0.0	3000	1801	0	0.34	0	68.5	62.8	49.7
10-11 PM	1370	0.0	3000	1370	0	0.34	0	69.1	63.2	49.7
11PM-MID	891	0.0	3000	891	0	0.35	0	69.6	63.6	49.7

"OFF" INDICATES NO ROAD WORK (ALL LANES OPEN TO TRAFFIC)

----- SITE BREAKDOWN DELAYS -----	
BREAKDOWN DURATION (MINS)	0
RANGE OF QUEUE DELAY - MIN (VEH-H) MAX	0.0
AV BREAKDOWNS PER DAY	0.00
AV QUEUE DELAY/DAY (VEH-H)	0.0
AV TOTAL DELAY/DAY (VEH-H)	0.0

----- SITE ACCIDENT DELAYS -----	
BREAKDOWN DURATION (MINS)	0
RANGE OF QUEUE DELAY - MIN (VEH-H) MAX	0
AV BREAKDOWNS PER DAY	0
AV QUEUE DELAY/DAY (VEH-H)	0
AV TOTAL DELAY/DAY (VEH-H)	0

AVERAGE ACCIDENT NUMBERS (PIA/DAY)	
MAIN ROUTE WITHOUT WORKS	0.0359
MAIN ROUTE WITH WORKS	0.0348
'DIVERSION'	0.0000
<small>PIA: Personal Injury Accidents</small>	
IMPACTS ON ROAD USERS	
ROAD USER COSTS PER DAY	\$1,462
CONGESTED HOURS PER DAY*	0

*Delays Exceeding User-Specified Maximum

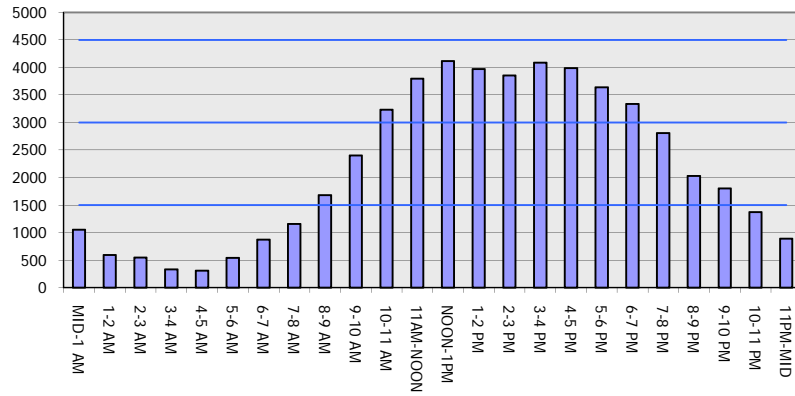
IH 43/894: HALE INTERCHANGE TO STH 27 (MILWAUKEE COUNTY)
NIGHTTIME CLOSURE
NO DIVERSION ROUTE (MAX QUEUE METHOD)

OCTOBER
 Analyzed for 2009
 Construction Season

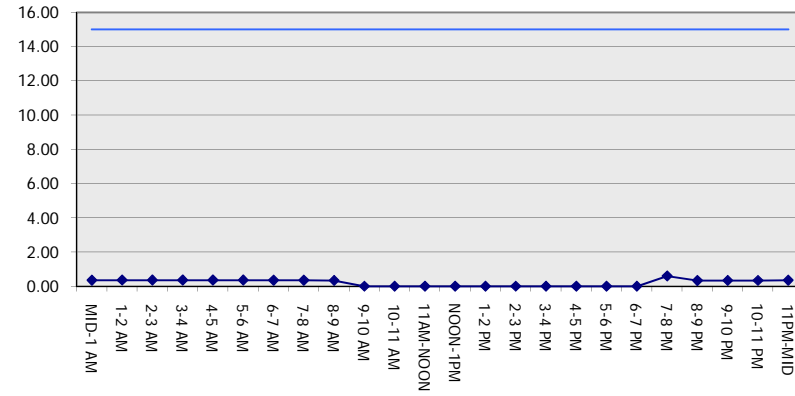
GRAPHICAL REPRESENTATION OF TRAFFIC MODEL INPUT AND OUTPUT

SUNDAY SOUTHBOUND DIRECTION

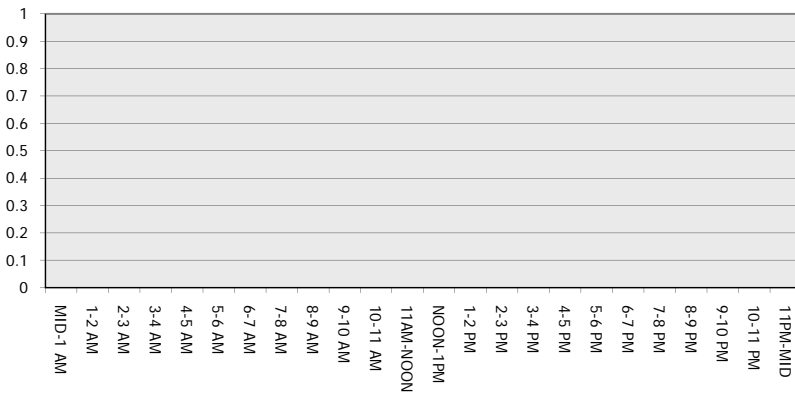
Main Route - Traffic Demand (Vehicles Per Hour)



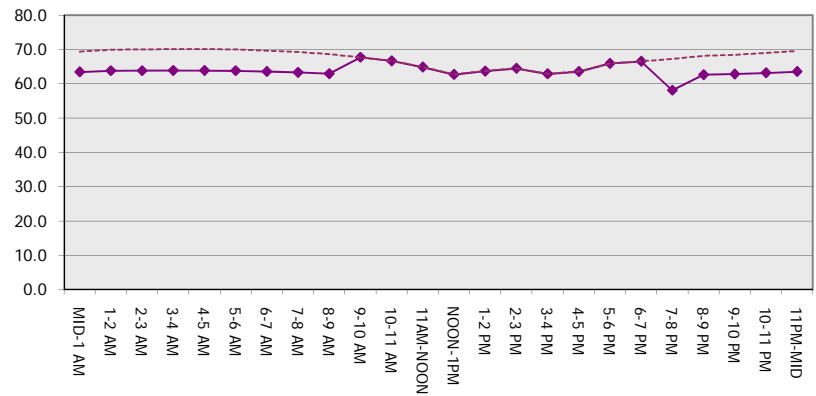
Main Route Average Delay Per Vehicle (Minutes)



Main Route - Average Queue Length (Vehicles)



Main Route - Average Speed (MPH)



IH 43/894: HALE INTERCHANGE TO STH 27 (MILWAUKEE COUNTY) NIGHTTIME CLOSURE NO DIVERSION ROUTE (MAX QUEUE METHOD)	OCTOBER
	Analyzed for 2009 Construction Season

SUMMARY OF TRAFFIC MODEL OUTPUT

SUNDAY NORTHBOUND DIRECTION

TIME OF DAY	FLOWS AND CAPACITY IN VEH/HR							AVERAGE SPEEDS IN MPH		
	MAIN ROUTE		SITE CAPA CITY	FLOW		AV.DEL PER VEH (MINS)	AVERAGE QUEUE (VEH)	MAIN ROUTE		SITE
	DEMAND FLOW	PCT HEAVY		MAIN ROUTE	'DIVER TED'			WITHOUT WORK ZONE	WITH WORK ZONE	
MID-1 AM	892	0.0	3000	892	0	0.35	0	69.6	63.6	49.7
1-2 AM	520	0.0	3000	520	0	0.36	0	70.1	63.8	49.7
2-3 AM	431	0.0	3000	431	0	0.36	0	70.2	63.9	49.7
3-4 AM	315	0.0	3000	315	0	0.36	0	70.2	63.9	49.7
4-5 AM	396	0.0	3000	396	0	0.36	0	70.2	63.9	49.7
5-6 AM	695	0.0	3000	695	0	0.36	0	69.9	63.7	49.7
6-7 AM	871	0.0	3000	871	0	0.35	0	69.7	63.6	49.7
7-8 AM	1219	0.0	3000	1219	0	0.35	0	69.2	63.3	49.7
8-9 AM	1672	0.0	3000	1672	0	0.34	0	68.7	63.0	49.7
9-10 AM	2402	0.0	OFF	2402	0	0.00	0	67.8	67.8	67.8
10-11 AM	2991	0.0	OFF	2991	0	0.00	0	67.0	67.0	67.0
11AM-NOON	3563	0.0	OFF	3563	0	0.00	0	66.3	66.3	66.3
NOON-1PM	4126	0.0	OFF	4126	0	0.00	0	62.7	62.7	62.7
1-2 PM	4234	0.0	OFF	4234	0	0.00	0	61.9	61.9	61.9
2-3 PM	4268	0.0	OFF	4268	0	0.00	0	61.7	61.7	61.7
3-4 PM	4524	0.0	OFF	4524	0	0.00	0	59.9	59.9	59.9
4-5 PM	4316	0.0	OFF	4316	0	0.00	0	61.4	61.4	61.4
5-6 PM	3844	0.0	OFF	3844	0	0.00	0	64.6	64.6	64.6
6-7 PM	3726	0.0	OFF	3726	0	0.00	0	65.4	65.4	65.4
7-8 PM	2996	0.0	2999	2996	0	1.53	46	67.0	47.9	38.2
8-9 PM	2162	0.0	3000	2162	0	0.33	0	68.1	62.5	49.7
9-10 PM	1585	0.0	3000	1585	0	0.34	0	68.7	63.0	49.7
10-11 PM	1119	0.0	3000	1119	0	0.35	0	69.4	63.4	49.7
11PM-MID	789	0.0	3000	789	0	0.35	0	69.7	63.7	49.7

"OFF" INDICATES NO ROAD WORK (ALL LANES OPEN TO TRAFFIC)

----- SITE BREAKDOWN DELAYS -----	
BREAKDOWN DURATION (MINS)	0
RANGE OF QUEUE DELAY - MIN (VEH-H) MAX	0.0
AV BREAKDOWNS PER DAY	0.00
AV QUEUE DELAY/DAY (VEH-H)	0.0
AV TOTAL DELAY/DAY (VEH-H)	0.0

----- SITE ACCIDENT DELAYS -----	
BREAKDOWN DURATION (MINS)	0
RANGE OF QUEUE DELAY - MIN (VEH-H) MAX	0
AV BREAKDOWNS PER DAY	0
AV QUEUE DELAY/DAY (VEH-H)	0
AV TOTAL DELAY/DAY (VEH-H)	0

AVERAGE ACCIDENT NUMBERS (PIA/DAY)	
MAIN ROUTE WITHOUT WORKS	0.0367
MAIN ROUTE WITH WORKS	0.0357
'DIVERSION'	0.0000

PIA: Personal Injury Accidents

ECONOMIC IMPACT ON ROAD USERS	
ROAD USER COSTS PER DAY	\$2,103
CONGESTED HOURS PER DAY*	0

*Delays Exceeding User-Specified Maximum

**IH 43/894: HALE INTERCHANGE TO STH 27 (MILWAUKEE COUNTY)
NIGHTTIME CLOSURE
NO DIVERSION ROUTE (MAX QUEUE METHOD)**

OCTOBER

Analyzed for 2009
Construction Season

**GRAPHICAL REPRESENTATION OF TRAFFIC MODEL INPUT AND OUTPUT
SUNDAY NORTHBOUND DIRECTION**

