

<b>IH 43/894: HALE INTERCHANGE TO STH 27 (MILWAUKEE COUNTY)                  NIGHTTIME CLOSURE                  NO DIVERSION ROUTE (MAX QUEUE METHOD)</b>	<b>OCTOBER</b>
	Analyzed for 2009 Construction Season

**SUMMARY OF TRAFFIC MODEL OUTPUT**

MON-THUR                  SOUTHBOUND DIRECTION

TIME OF DAY	FLOWS AND CAPACITY IN VEH/HR						AVERAGE SPEEDS IN MPH			
	MAIN ROUTE		SITE CAPA CITY	FLOW		AV.DEL PER VEH (MINS)	AVERAGE QUEUE (VEH)	MAIN ROUTE		SITE
	DEMAND FLOW	PCT HEAVY		MAIN ROUTE	'DIVER TED'			WITHOUT WORK ZONE	WITH WORK ZONE	
MID-1 AM	662	0.0	3000	662	0	0.36	0	69.9	63.8	49.7
1-2 AM	428	0.0	3000	428	0	0.36	0	70.2	63.9	49.7
2-3 AM	396	0.0	3000	396	0	0.36	0	70.2	63.9	49.7
3-4 AM	484	0.0	3000	484	0	0.36	0	70.1	63.9	49.7
4-5 AM	955	0.0	3000	955	0	0.35	0	69.6	63.5	49.7
5-6 AM	2525	0.0	OFF	2525	0	0.00	0	67.6	67.6	67.6
6-7 AM	4504	0.0	OFF	4504	0	0.00	0	60.1	60.1	60.1
7-8 AM	4698	0.0	OFF	4698	0	0.00	0	58.7	58.7	58.7
8-9 AM	3955	0.0	OFF	3955	0	0.00	0	63.8	63.8	63.8
9-10 AM	3541	0.0	OFF	3541	0	0.00	0	66.3	66.3	66.3
10-11 AM	3505	0.0	OFF	3505	0	0.00	0	66.4	66.4	66.4
11AM-NOON	3600	0.0	OFF	3600	0	0.00	0	66.3	66.3	66.3
NOON-1PM	3769	0.0	OFF	3769	0	0.00	0	65.1	65.1	65.1
1-2 PM	3987	0.0	OFF	3987	0	0.00	0	63.6	63.6	63.6
2-3 PM	4596	0.0	OFF	4596	0	0.00	0	59.4	59.4	59.4
3-4 PM	5418	0.0	OFF	5418	0	0.00	0	53.8	53.8	53.8
4-5 PM	5668	0.0	OFF	5668	0	0.00	0	52.2	52.2	52.2
5-6 PM	5222	0.0	OFF	5222	0	0.00	0	55.2	55.2	55.2
6-7 PM	4262	0.0	OFF	4262	0	0.00	0	61.7	61.7	61.7
7-8 PM	2858	0.0	2999	2858	0	0.87	15	67.2	54.8	40.6
8-9 PM	2319	0.0	3000	2319	0	0.33	0	67.9	62.4	49.7
9-10 PM	2156	0.0	3000	2156	0	0.33	0	68.1	62.6	49.7
10-11 PM	1582	0.0	3000	1582	0	0.34	0	68.7	63.0	49.7
11PM-MID	1041	0.0	3000	1041	0	0.35	0	69.4	63.5	49.7

**"OFF" INDICATES NO ROAD WORK (ALL LANES OPEN TO TRAFFIC)**

*----- SITE BREAKDOWN DELAYS -----*	
BREAKDOWN DURATION (MINS)	0
RANGE OF QUEUE DELAY - MIN (VEH-H) MAX	0.0
AV BREAKDOWNS PER DAY	0.00
AV QUEUE DELAY/DAY (VEH-H)	0.0
AV TOTAL DELAY/DAY (VEH-H)	0.0

*----- SITE ACCIDENT DELAYS -----*	
BREAKDOWN DURATION (MINS)	0
RANGE OF QUEUE DELAY - MIN (VEH-H) MAX	0
AV BREAKDOWNS PER DAY	0
AV QUEUE DELAY/DAY (VEH-H)	0
AV TOTAL DELAY/DAY (VEH-H)	0

AVERAGE ACCIDENT NUMBERS (PIA/DAY)	
MAIN ROUTE WITHOUT WORKS	0.0494
MAIN ROUTE WITH WORKS	0.0485
'DIVERSION'	0.0000
<small>PIA: Personal Injury Accidents</small>	
IMPACTS ON ROAD USERS	
ROAD USER COSTS PER DAY	\$1,215
CONGESTED HOURS PER DAY*	0

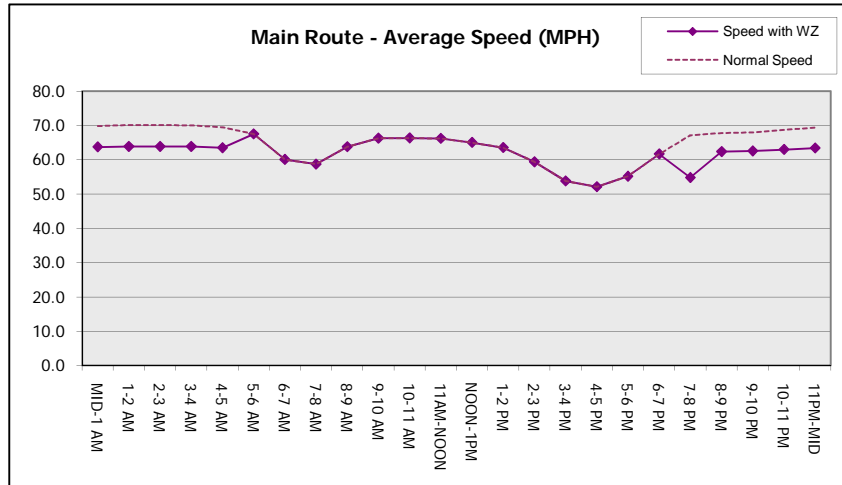
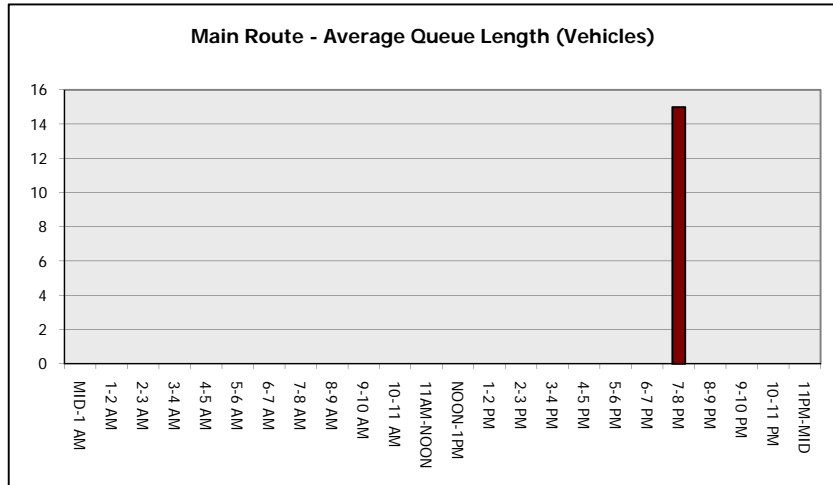
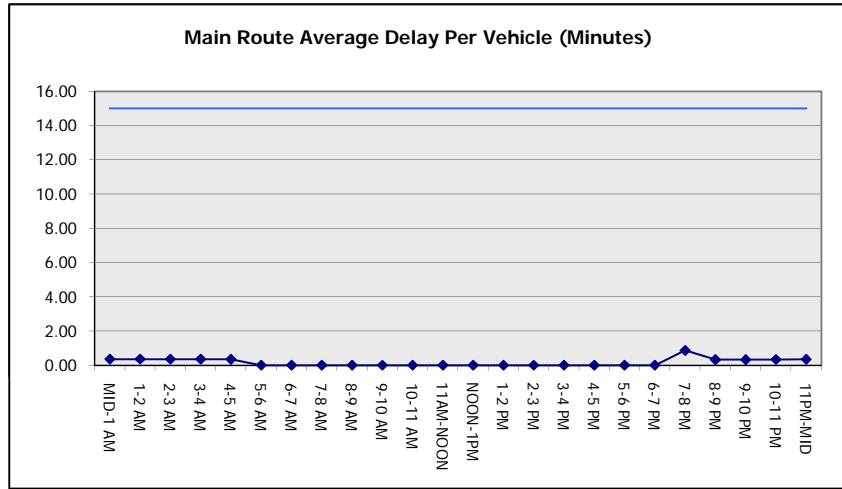
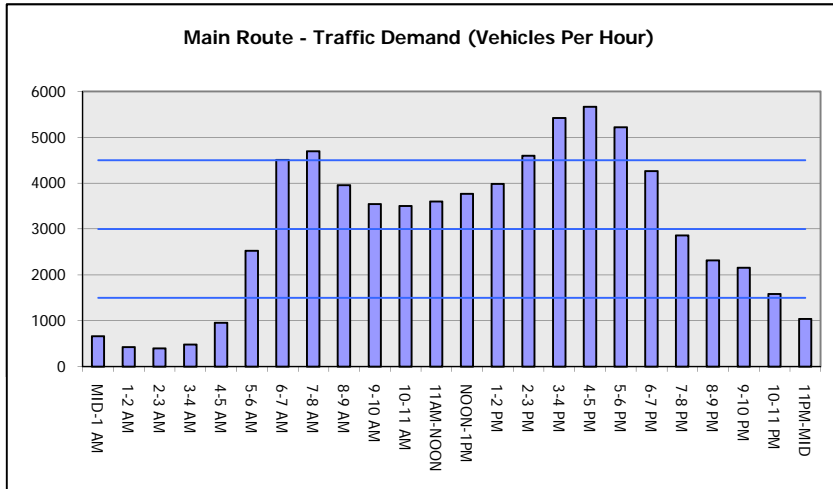
\*Delays Exceeding User-Specified Maximum

**IH 43/894: HALE INTERCHANGE TO STH 27 (MILWAUKEE COUNTY)**  
**NIGHTTIME CLOSURE**  
**NO DIVERSION ROUTE (MAX QUEUE METHOD)**

**OCTOBER**  
 Analyzed for 2009  
 Construction Season

**GRAPHICAL REPRESENTATION OF TRAFFIC MODEL INPUT AND OUTPUT**

**MON-THUR SOUTHBOUND DIRECTION**



<b>IH 43/894: HALE INTERCHANGE TO STH 27 (MILWAUKEE COUNTY)                  NIGHTTIME CLOSURE                  NO DIVERSION ROUTE (MAX QUEUE METHOD)</b>	<b>OCTOBER</b>
	Analyzed for 2009 Construction Season

**SUMMARY OF TRAFFIC MODEL OUTPUT**

MON-THUR                      NORTHBOUND DIRECTION

TIME OF DAY	FLOWS AND CAPACITY IN VEH/HR							AVERAGE SPEEDS IN MPH		
	MAIN ROUTE		SITE CAPA CITY	FLOW		AV.DEL PER VEH (MINS)	AVERAGE QUEUE (VEH)	MAIN ROUTE		SITE
	DEMAND FLOW	PCT HEAVY		MAIN ROUTE	'DIVER TED'			WITHOUT WORK ZONE	WITH WORK ZONE	
MID-1 AM	527	0.0	3000	527	0	0.36	0	70.0	63.8	49.7
1-2 AM	361	0.0	3000	361	0	0.36	0	70.2	63.9	49.7
2-3 AM	372	0.0	3000	372	0	0.36	0	70.2	63.9	49.7
3-4 AM	514	0.0	3000	514	0	0.36	0	70.1	63.9	49.7
4-5 AM	1052	0.0	3000	1052	0	0.35	0	69.4	63.5	49.7
5-6 AM	2650	0.0	OFF	2650	0	0.00	0	67.4	67.4	67.4
6-7 AM	5221	0.0	OFF	5221	0	0.00	0	55.2	55.2	55.2
7-8 AM	5609	0.0	OFF	5609	0	0.00	0	52.5	52.5	52.5
8-9 AM	4669	0.0	OFF	4669	0	0.00	0	58.9	58.9	58.9
9-10 AM	3563	0.0	OFF	3563	0	0.00	0	66.3	66.3	66.3
10-11 AM	3344	0.0	OFF	3344	0	0.00	0	66.6	66.6	66.6
11AM-NOON	3440	0.0	OFF	3440	0	0.00	0	66.4	66.4	66.4
NOON-1PM	3670	0.0	OFF	3670	0	0.00	0	65.8	65.8	65.8
1-2 PM	3857	0.0	OFF	3857	0	0.00	0	64.5	64.5	64.5
2-3 PM	4445	0.0	OFF	4445	0	0.00	0	60.5	60.5	60.5
3-4 PM	4986	0.0	OFF	4986	0	0.00	0	56.8	56.8	56.8
4-5 PM	5365	0.0	OFF	5365	0	0.00	0	54.2	54.2	54.2
5-6 PM	5451	0.0	OFF	5451	0	0.00	0	53.6	53.6	53.6
6-7 PM	4177	0.0	OFF	4177	0	0.00	0	62.3	62.3	62.3
7-8 PM	3064	0.0	2999	3064	0	2.19	81	66.9	42.7	37.3
8-9 PM	2585	0.0	3000	2585	0	0.57	6	67.5	58.8	44.8
9-10 PM	2207	0.0	3000	2207	0	0.33	0	68.0	62.5	49.7
10-11 PM	1513	0.0	3000	1513	0	0.34	0	68.9	63.1	49.7
11PM-MID	1072	0.0	3000	1072	0	0.35	0	69.4	63.4	49.7

"OFF" INDICATES NO ROAD WORK (ALL LANES OPEN TO TRAFFIC)

*----- SITE BREAKDOWN DELAYS -----*	
BREAKDOWN DURATION (MINS)	0
RANGE OF QUEUE DELAY - MIN (VEH-H) MAX	0.0
AV BREAKDOWNS PER DAY	0.00
AV QUEUE DELAY/DAY (VEH-H)	0.0
AV TOTAL DELAY/DAY (VEH-H)	0.0

*----- SITE ACCIDENT DELAYS -----*	
BREAKDOWN DURATION (MINS)	0
RANGE OF QUEUE DELAY - MIN (VEH-H) MAX	0
AV BREAKDOWNS PER DAY	0
AV QUEUE DELAY/DAY (VEH-H)	0
AV TOTAL DELAY/DAY (VEH-H)	0

AVERAGE ACCIDENT NUMBERS (PIA/DAY)	
MAIN ROUTE WITHOUT WORKS	0.0504
MAIN ROUTE WITH WORKS	0.0496
'DIVERSION'	0.0000

PIA: Personal Injury Accidents

ECONOMIC IMPACT ON ROAD USERS	
ROAD USER COSTS PER DAY	\$2,223
CONGESTED HOURS PER DAY*	0

\*Delays Exceeding User-Specified Maximum

**IH 43/894: HALE INTERCHANGE TO STH 27 (MILWAUKEE COUNTY)**  
**NIGHTTIME CLOSURE**  
**NO DIVERSION ROUTE (MAX QUEUE METHOD)**

**OCTOBER**

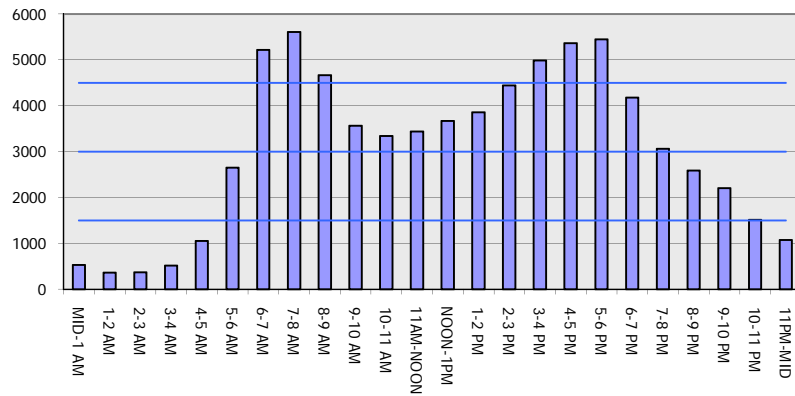
Analyzed for 2009  
 Construction Season

**GRAPHICAL REPRESENTATION OF TRAFFIC MODEL INPUT AND OUTPUT**

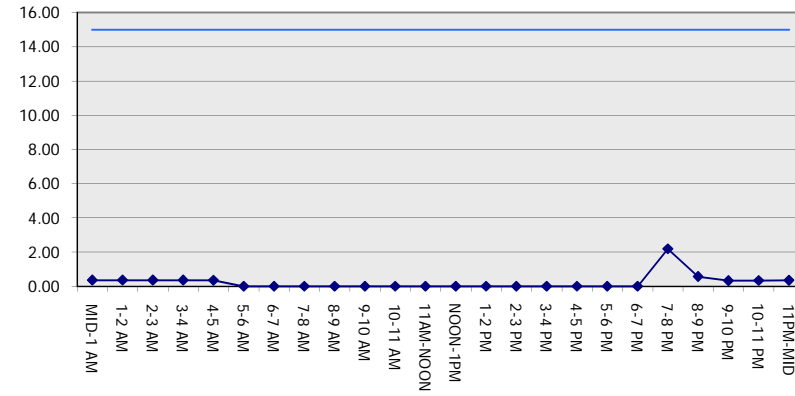
**MON-THUR**

**NORTHBOUND DIRECTION**

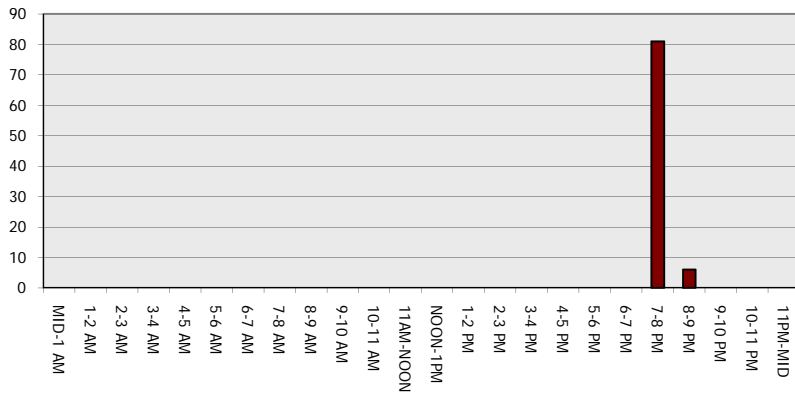
**Main Route - Traffic Demand (Vehicles Per Hour)**



**Main Route Average Delay Per Vehicle (Minutes)**



**Main Route - Average Queue Length (Vehicles)**



**Main Route - Average Speed (MPH)**

