

**IH 43/894: HALE INTERCHANGE TO STH 27 (MILWAUKEE COUNTY)
NIGHTTIME CLOSURE
NO DIVERSION ROUTE (MAX QUEUE METHOD)**

OCTOBER
Analyzed for 2009
Construction Season

SUMMARY OF TRAFFIC MODEL OUTPUT
FRIDAY SOUTHBOUND DIRECTION

TIME OF DAY	FLOWS AND CAPACITY IN VEH/HR						AVERAGE SPEEDS IN MPH			
	MAIN ROUTE		SITE CAPA CITY	FLOW		AV.DEL PER VEH (MINS)	AVERAGE QUEUE (VEH)	MAIN ROUTE		SITE
	DEMAND FLOW	PCT HEAVY		MAIN ROUTE	'DIVER TED'			WITHOUT WORK ZONE	WITH WORK ZONE	
MID-1 AM	862	0.0	3000	862	0	0.35	0	69.7	63.6	49.7
1-2 AM	540	0.0	3000	540	0	0.36	0	70.0	63.8	49.7
2-3 AM	525	0.0	3000	525	0	0.36	0	70.1	63.8	49.7
3-4 AM	580	0.0	3000	580	0	0.36	0	70.0	63.8	49.7
4-5 AM	987	0.0	3000	987	0	0.35	0	69.5	63.5	49.7
5-6 AM	2516	0.0	OFF	2516	0	0.00	0	67.6	67.6	67.6
6-7 AM	4286	0.0	OFF	4286	0	0.00	0	61.5	61.5	61.5
7-8 AM	4643	0.0	OFF	4643	0	0.00	0	59.1	59.1	59.1
8-9 AM	4066	0.0	OFF	4066	0	0.00	0	63.1	63.1	63.1
9-10 AM	3739	0.0	OFF	3739	0	0.00	0	65.3	65.3	65.3
10-11 AM	4024	0.0	OFF	4024	0	0.00	0	63.3	63.3	63.3
11AM-NOON	4345	0.0	OFF	4345	0	0.00	0	61.2	61.2	61.2
NOON-1PM	4553	0.0	OFF	4553	0	0.00	0	59.7	59.7	59.7
1-2 PM	4874	0.0	OFF	4874	0	0.00	0	57.6	57.6	57.6
2-3 PM	5417	0.0	OFF	5417	0	0.00	0	53.8	53.8	53.8
3-4 PM	5638	0.0	OFF	5638	0	0.00	0	52.4	52.4	52.4
4-5 PM	5732	0.0	OFF	5732	0	0.00	0	51.7	51.7	51.7
5-6 PM	5456	0.0	OFF	5456	0	0.00	0	53.6	53.6	53.6
6-7 PM	4726	0.0	OFF	4726	0	0.00	0	58.6	58.6	58.6
7-8 PM	3494	0.0	2999	3494	0	5.80	307	66.4	26.6	37.3
8-9 PM	2772	0.0	2999	2772	0	7.98	405	67.3	21.9	37.3
9-10 PM	2688	0.0	3000	2688	0	2.70	135	67.4	39.6	39.9
10-11 PM	2042	0.0	3000	2042	0	0.33	0	68.2	62.7	49.7
11PM-MID	1494	0.0	3000	1494	0	0.34	0	68.9	63.1	49.7

"OFF" INDICATES NO ROAD WORK (ALL LANES OPEN TO TRAFFIC)

----- SITE BREAKDOWN DELAYS -----	
BREAKDOWN DURATION (MINS)	0
RANGE OF QUEUE DELAY - MIN (VEH-H) MAX	0.0
AV BREAKDOWNS PER DAY	0.00
AV QUEUE DELAY/DAY (VEH-H)	0.0
AV TOTAL DELAY/DAY (VEH-H)	0.0

----- SITE ACCIDENT DELAYS -----	
BREAKDOWN DURATION (MINS)	0
RANGE OF QUEUE DELAY - MIN (VEH-H) MAX	0
AV BREAKDOWNS PER DAY	0
AV QUEUE DELAY/DAY (VEH-H)	0
AV TOTAL DELAY/DAY (VEH-H)	0

AVERAGE ACCIDENT NUMBERS (PIA/DAY)	
MAIN ROUTE WITHOUT WORKS	0.0547
MAIN ROUTE WITH WORKS	0.0537
'DIVERSION'	0.0000
PIA: Personal Injury Accidents	
IMPACTS ON ROAD USERS	
ROAD USER COSTS PER DAY	\$12,882
CONGESTED HOURS PER DAY*	0

*Delays Exceeding User-Specified Maximum

**IH 43/894: HALE INTERCHANGE TO STH 27 (MILWAUKEE COUNTY)
NIGHTTIME CLOSURE
NO DIVERSION ROUTE (MAX QUEUE METHOD)**

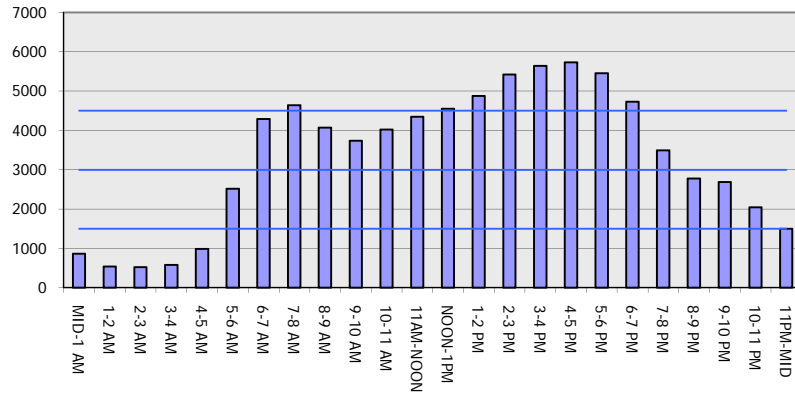
OCTOBER

Analyzed for 2009
Construction Season

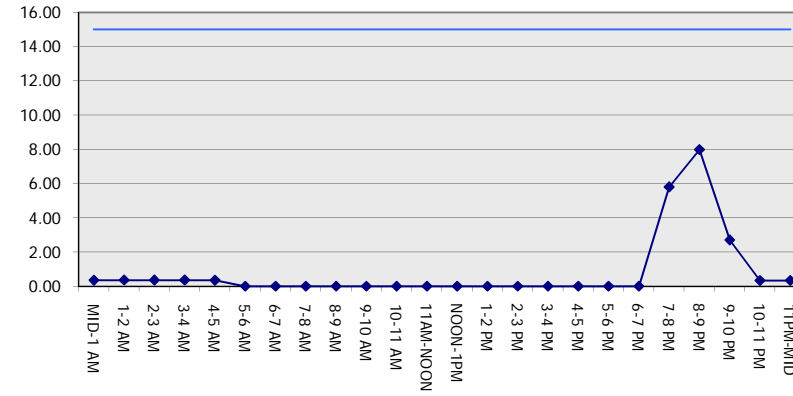
GRAPHICAL REPRESENTATION OF TRAFFIC MODEL INPUT AND OUTPUT

FRIDAY SOUTHBOUND DIRECTION

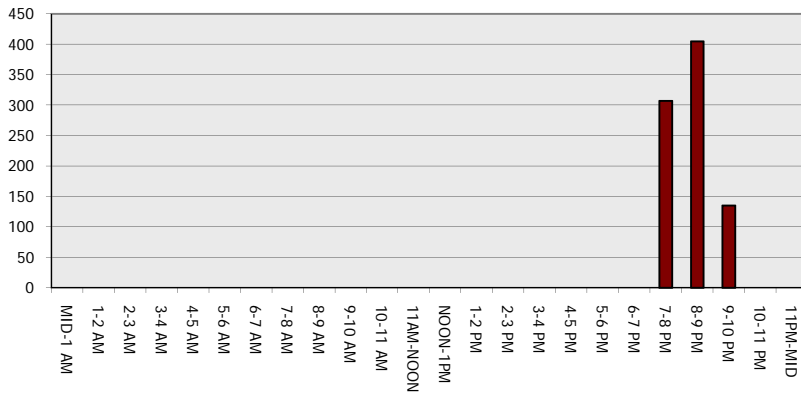
Main Route - Traffic Demand (Vehicles Per Hour)



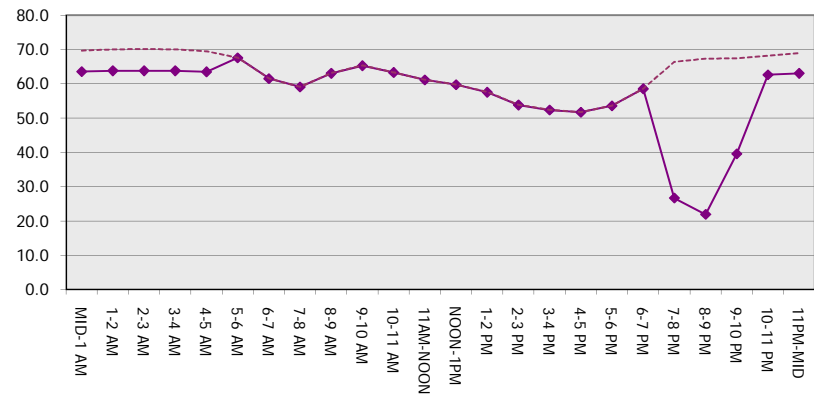
Main Route Average Delay Per Vehicle (Minutes)



Main Route - Average Queue Length (Vehicles)



Main Route - Average Speed (MPH)



IH 43/894: HALE INTERCHANGE TO STH 27 (MILWAUKEE COUNTY) NIGHTTIME CLOSURE NO DIVERSION ROUTE (MAX QUEUE METHOD)	OCTOBER
	Analyzed for 2009 Construction Season

SUMMARY OF TRAFFIC MODEL OUTPUT

FRIDAY NORTHBOUND DIRECTION

TIME OF DAY	FLOWS AND CAPACITY IN VEH/HR							AVERAGE SPEEDS IN MPH			
	MAIN ROUTE		SITE CAPA CITY	FLOW		AV.DEL PER VEH (MINS)	AVERAGE QUEUE (VEH)	MAIN ROUTE		SITE	
	DEMAND FLOW	PCT HEAVY		MAIN ROUTE	'DIVER TED'			WITHOUT WORK ZONE	WITH WORK ZONE		
MID-1 AM	646	0.0	3000	646	0	0.36	0	69.9	63.8	49.7	
1-2 AM	428	0.0	3000	428	0	0.36	0	70.2	63.9	49.7	
2-3 AM	442	0.0	3000	442	0	0.36	0	70.2	63.9	49.7	
3-4 AM	568	0.0	3000	568	0	0.36	0	70.0	63.8	49.7	
4-5 AM	1040	0.0	3000	1040	0	0.35	0	69.4	63.5	49.7	
5-6 AM	2441	0.0	OFF	2441	0	0.00	0	67.7	67.7	67.7	
6-7 AM	4760	0.0	OFF	4760	0	0.00	0	58.3	58.3	58.3	
7-8 AM	5386	0.0	OFF	5386	0	0.00	0	54.1	54.1	54.1	
8-9 AM	4381	0.0	OFF	4381	0	0.00	0	60.9	60.9	60.9	
9-10 AM	3735	0.0	OFF	3735	0	0.00	0	65.3	65.3	65.3	
10-11 AM	3746	0.0	OFF	3746	0	0.00	0	65.3	65.3	65.3	
11AM-NOON	3897	0.0	OFF	3897	0	0.00	0	64.2	64.2	64.2	
NOON-1PM	4286	0.0	OFF	4286	0	0.00	0	61.5	61.5	61.5	
1-2 PM	4453	0.0	OFF	4453	0	0.00	0	60.4	60.4	60.4	
2-3 PM	4926	0.0	OFF	4926	0	0.00	0	57.2	57.2	57.2	
3-4 PM	5403	0.0	OFF	5403	0	0.00	0	54.0	54.0	54.0	
4-5 PM	5582	0.0	OFF	5582	0	0.00	0	52.7	52.7	52.7	
5-6 PM	5569	0.0	OFF	5569	0	0.00	0	52.8	52.8	52.8	
6-7 PM	4540	0.0	OFF	4540	0	0.00	0	59.9	59.9	59.9	
7-8 PM	3464	0.0	2999	3464	0	5.43	285	66.4	27.7	37.3	
8-9 PM	2840	0.0	2999	2840	0	8.13	410	67.2	21.5	37.3	
9-10 PM	2613	0.0	2999	2613	0	2.65	143	67.5	39.9	40.9	
10-11 PM	2007	0.0	3000	2007	0	0.33	0	68.2	62.7	49.7	
11PM-MID	1457	0.0	3000	1457	0	0.34	0	68.9	63.2	49.7	

"OFF" INDICATES NO ROAD WORK (ALL LANES OPEN TO TRAFFIC)

----- SITE BREAKDOWN DELAYS -----	
BREAKDOWN DURATION (MINS)	0
RANGE OF QUEUE DELAY - MIN (VEH-H) MAX	0.0
AV BREAKDOWNS PER DAY	0.00
AV QUEUE DELAY/DAY (VEH-H)	0.0
AV TOTAL DELAY/DAY (VEH-H)	0.0

----- SITE ACCIDENT DELAYS -----	
BREAKDOWN DURATION (MINS)	0
RANGE OF QUEUE DELAY - MIN (VEH-H) MAX	0
AV BREAKDOWNS PER DAY	0
AV QUEUE DELAY/DAY (VEH-H)	0
AV TOTAL DELAY/DAY (VEH-H)	0

AVERAGE ACCIDENT NUMBERS (PIA/DAY)	
MAIN ROUTE WITHOUT WORKS	0.0538
MAIN ROUTE WITH WORKS	0.0528
'DIVERSION'	0.0000

PIA: Personal Injury Accidents

ECONOMIC IMPACT ON ROAD USERS	
ROAD USER COSTS PER DAY	\$12,642
CONGESTED HOURS PER DAY*	0

*Delays Exceeding User-Specified Maximum

IH 43/894: HALE INTERCHANGE TO STH 27 (MILWAUKEE COUNTY)
NIGHTTIME CLOSURE
NO DIVERSION ROUTE (MAX QUEUE METHOD)

OCTOBER

Analyzed for 2009
 Construction Season

GRAPHICAL REPRESENTATION OF TRAFFIC MODEL INPUT AND OUTPUT

FRIDAY NORTHBOUND DIRECTION

