

IH 43/894: HALE INTERCHANGE TO STH 27 (MILWAUKEE COUNTY) NIGHTTIME 2 LANE CLOSURE NO DIVERSION ROUTE (MAX QUEUE METHOD)	AUGUST
	Analyzed for 2009 Construction Season

SUMMARY OF TRAFFIC MODEL OUTPUT

SUNDAY SOUTHBOUND DIRECTION

TIME OF DAY	FLOWS AND CAPACITY IN VEH/HR						AVERAGE SPEEDS IN MPH				
	MAIN ROUTE		SITE CAPA CITY	FLOW		AV.DEL PER VEH (MINS)	AVERAGE QUEUE (VEH)	MAIN ROUTE		SITE	
	DEMAND FLOW	PCT HEAVY		MAIN ROUTE	'DIVER TED'			WITHOUT WORK ZONE	WITH WORK ZONE		
MID-1 AM	1048	0.0	1500	1048	0	0.59	0	69.4	59.9	41.5	
1-2 AM	616	0.0	1500	616	0	0.55	0	70.0	60.9	43.1	
2-3 AM	457	0.0	1500	457	0	0.53	0	70.2	61.4	43.7	
3-4 AM	282	0.0	1500	282	0	0.51	0	70.2	61.7	44.3	
4-5 AM	302	0.0	1500	302	0	0.51	0	70.2	61.6	44.3	
5-6 AM	540	0.0	1500	540	0	0.54	0	70.0	61.1	43.3	
6-7 AM	905	0.0	1500	905	0	0.58	0	69.6	60.2	42.0	
7-8 AM	1166	0.0	1499	1166	0	0.69	0	69.3	58.4	38.9	
8-9 AM	1743	0.0	1499	1743	0	3.34	77	68.6	36.3	30.8	
9-10 AM	2566	0.0	OFF	2566	0	0.10	8	67.6	65.8	65.8	
10-11 AM	3286	0.0	OFF	3286	0	0.00	0	66.6	66.6	66.6	
11AM-NOON	3427	0.0	OFF	3427	0	0.00	0	66.4	66.4	66.4	
NOON-1PM	3642	0.0	OFF	3642	0	0.00	0	66.0	66.0	66.0	
1-2 PM	3977	0.0	OFF	3977	0	0.00	0	63.7	63.7	63.7	
2-3 PM	3881	0.0	OFF	3881	0	0.00	0	64.3	64.3	64.3	
3-4 PM	3951	0.0	OFF	3951	0	0.00	0	63.8	63.8	63.8	
4-5 PM	3827	0.0	OFF	3827	0	0.00	0	64.7	64.7	64.7	
5-6 PM	3511	0.0	OFF	3511	0	0.00	0	66.4	66.4	66.4	
6-7 PM	3124	0.0	OFF	3124	0	0.00	0	66.9	66.9	66.9	
7-8 PM	2778	0.0	1499	1663	1116	14.23+	360	67.3	14.3	35.9	
8-9 PM	2360	0.0	1499	1714	646	14.68+	368	67.8	14.0	32.6	
9-10 PM	1953	0.0	1499	1500	453	16.35+	399	68.3	12.8	30.8	
10-11 PM	1482	0.0	1500	1445	37	15.46+	376	68.9	13.4	30.8	
11PM-MID	920	0.0	1499	920	0	2.66	98	69.6	40.5	39.8	

"OFF" INDICATES NO ROAD WORK (ALL LANES OPEN TO TRAFFIC)

+ INDICATES QUEUEING EXCEEDS USER-SPECIFIED MAXIMUM LIMIT

----- SITE BREAKDOWN DELAYS -----	
BREAKDOWN DURATION (MINS)	0
RANGE OF QUEUE DELAY - MIN (VEH-H) MAX	0.0
AV BREAKDOWNS PER DAY	0.00
AV QUEUE DELAY/DAY (VEH-H)	0.0
AV TOTAL DELAY/DAY (VEH-H)	0.0

----- SITE ACCIDENT DELAYS -----	
BREAKDOWN DURATION (MINS)	0
RANGE OF QUEUE DELAY - MIN (VEH-H) MAX	0
AV BREAKDOWNS PER DAY	0
AV QUEUE DELAY/DAY (VEH-H)	0
AV TOTAL DELAY/DAY (VEH-H)	0

AVERAGE ACCIDENT NUMBERS (PIA/DAY)	
MAIN ROUTE WITHOUT WORKS	0.0354
MAIN ROUTE WITH WORKS	0.0329
'DIVERSION'	0.0036
PIA: Personal Injury Accidents	
IMPACTS ON ROAD USERS	
ROAD USER COSTS PER DAY	\$36,054
CONGESTED HOURS PER DAY*	4

*Delays Exceeding User-Specified Maximum

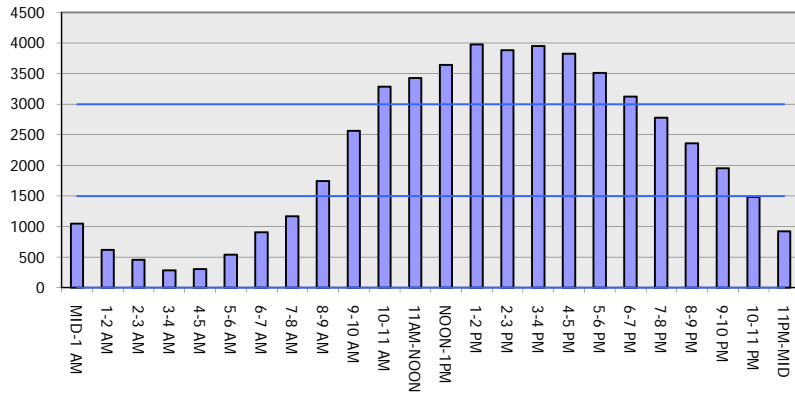
IH 43/894: HALE INTERCHANGE TO STH 27 (MILWAUKEE COUNTY)
NIGHTTIME 2 LANE CLOSURE
NO DIVERSION ROUTE (MAX QUEUE METHOD)

AUGUST
 Analyzed for 2009
 Construction Season

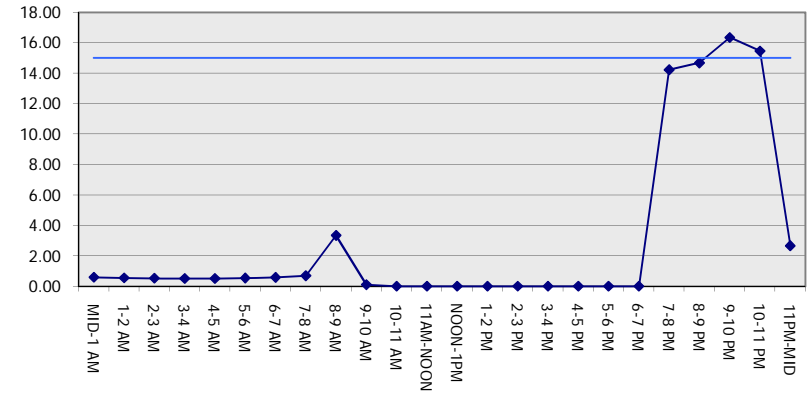
GRAPHICAL REPRESENTATION OF TRAFFIC MODEL INPUT AND OUTPUT

SUNDAY SOUTHBOUND DIRECTION

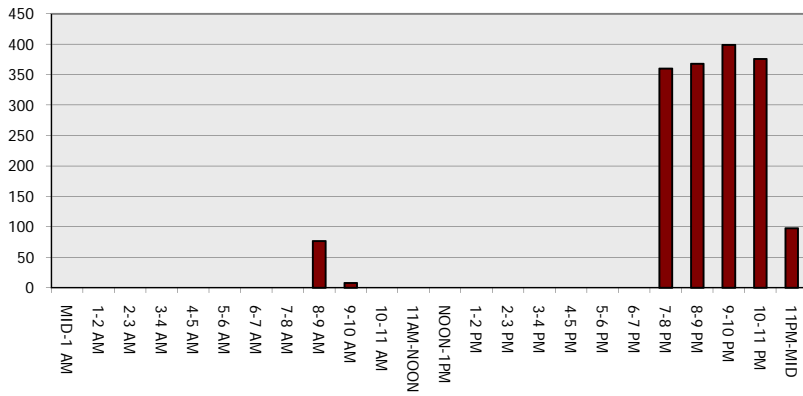
Main Route - Traffic Demand (Vehicles Per Hour)



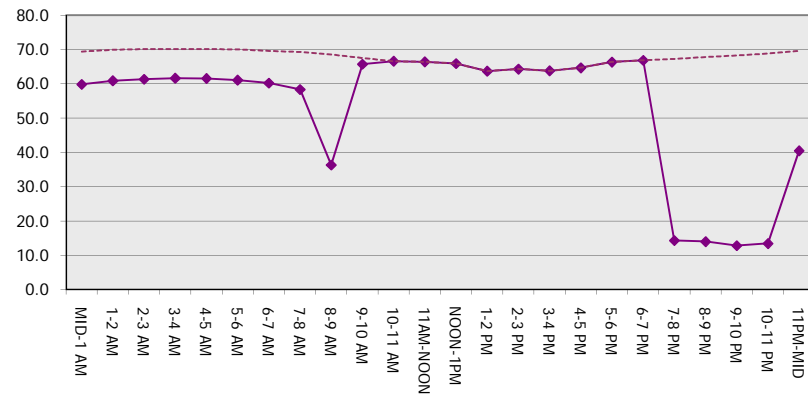
Main Route Average Delay Per Vehicle (Minutes)



Main Route - Average Queue Length (Vehicles)



Main Route - Average Speed (MPH)



IH 43/894: HALE INTERCHANGE TO STH 27 (MILWAUKEE COUNTY) NIGHTTIME 2 LANE CLOSURE NO DIVERSION ROUTE (MAX QUEUE METHOD)	AUGUST
	Analyzed for 2009 Construction Season

SUMMARY OF TRAFFIC MODEL OUTPUT

SUNDAY NORTHBOUND DIRECTION

TIME OF DAY	FLOWS AND CAPACITY IN VEH/HR							AVERAGE SPEEDS IN MPH		
	MAIN ROUTE		SITE CAPA CITY	FLOW		AV.DEL PER VEH (MINS)	AVERAGE QUEUE (VEH)	MAIN ROUTE		SITE
	DEMAND FLOW	PCT HEAVY		MAIN ROUTE	'DIVER TED'			WITHOUT WORK ZONE	WITH WORK ZONE	
MID-1 AM	953	0.0	1500	953	0	0.58	0	69.6	60.1	41.9
1-2 AM	566	0.0	1500	566	0	0.54	0	70.0	61.0	43.3
2-3 AM	453	0.0	1500	453	0	0.53	0	70.2	61.4	43.7
3-4 AM	327	0.0	1500	327	0	0.51	0	70.2	61.6	44.2
4-5 AM	428	0.0	1500	428	0	0.52	0	70.2	61.4	43.8
5-6 AM	719	0.0	1500	719	0	0.56	0	69.9	60.7	42.7
6-7 AM	904	0.0	1500	904	0	0.58	0	69.6	60.2	42.0
7-8 AM	1127	0.0	1499	1127	0	0.66	0	69.3	58.9	39.8
8-9 AM	1583	0.0	1499	1583	0	1.96	30	68.7	45.2	31.6
9-10 AM	2411	0.0	OFF	2411	0	0.03	2	67.8	67.2	67.2
10-11 AM	3041	0.0	OFF	3041	0	0.00	0	66.9	66.9	66.9
11AM-NOON	3671	0.0	OFF	3671	0	0.00	0	65.8	65.8	65.8
NOON-1PM	4247	0.0	OFF	4247	0	0.00	0	61.9	61.9	61.9
1-2 PM	4333	0.0	OFF	4333	0	0.00	0	61.2	61.2	61.2
2-3 PM	4595	0.0	OFF	4595	0	0.00	0	59.5	59.5	59.5
3-4 PM	4544	0.0	OFF	4544	0	0.00	0	59.8	59.8	59.8
4-5 PM	4517	0.0	OFF	4517	0	0.00	0	60.0	60.0	60.0
5-6 PM	4433	0.0	OFF	4433	0	0.00	0	60.5	60.5	60.5
6-7 PM	3867	0.0	OFF	3867	0	0.00	0	64.5	64.5	64.5
7-8 PM	3217	0.0	1499	1550	1667	16.46+	412	66.8	12.7	36.6
8-9 PM	2817	0.0	1499	1586	1231	14.40+	380	67.3	14.2	36.0
9-10 PM	2171	0.0	1499	1670	501	14.07+	357	68.1	14.5	33.5
10-11 PM	1445	0.0	1499	1445	0	13.10	315	68.9	15.3	30.8
11PM-MID	999	0.0	1499	999	0	2.26	71	69.5	43.2	39.2

"OFF" INDICATES NO ROAD WORK (ALL LANES OPEN TO TRAFFIC)

+ INDICATES QUEUEING EXCEEDS USER-SPECIFIED MAXIMUM LIMIT

BREAKDOWN DURATION (MINS)	0
RANGE OF QUEUE DELAY - MIN (VEH-H) MAX	0.0
AV BREAKDOWNS PER DAY	0.00
AV QUEUE DELAY/DAY (VEH-H)	0.0
AV TOTAL DELAY/DAY (VEH-H)	0.0

BREAKDOWN DURATION (MINS)	0
RANGE OF QUEUE DELAY - MIN (VEH-H) MAX	0
AV BREAKDOWNS PER DAY	0
AV QUEUE DELAY/DAY (VEH-H)	0
AV TOTAL DELAY/DAY (VEH-H)	0

MAIN ROUTE WITHOUT WORKS	0.0393
MAIN ROUTE WITH WORKS	0.0360
'DIVERSION'	0.0054

PIA: Personal Injury Accidents

ROAD USER COSTS PER DAY	\$38,853
CONGESTED HOURS PER DAY*	3

*Delays Exceeding User-Specified Maximum

IH 43/894: HALE INTERCHANGE TO STH 27 (MILWAUKEE COUNTY)
NIGHTTIME 2 LANE CLOSURE
NO DIVERSION ROUTE (MAX QUEUE METHOD)

AUGUST
 Analyzed for 2009
 Construction Season

GRAPHICAL REPRESENTATION OF TRAFFIC MODEL INPUT AND OUTPUT
SUNDAY NORTHBOUND DIRECTION

