

<b>IH 43/894: HALE INTERCHANGE TO STH 27 (MILWAUKEE COUNTY)</b> <b>NIGHTTIME CLOSURE</b> <b>NO DIVERSION ROUTE (MAX QUEUE METHOD)</b>	<b>AUGUST</b>
	Analyzed for 2009 Construction Season

**SUMMARY OF TRAFFIC MODEL OUTPUT**

SUNDAY SOUTHBOUND DIRECTION

TIME OF DAY	FLOWS AND CAPACITY IN VEH/HR						AVERAGE SPEEDS IN MPH			
	MAIN ROUTE		SITE CAPA CITY	FLOW		AV.DEL PER VEH (MINS)	AVERAGE QUEUE (VEH)	MAIN ROUTE		SITE
	DEMAND FLOW	PCT HEAVY		MAIN ROUTE	'DIVER TED'			WITHOUT WORK ZONE	WITH WORK ZONE	
MID-1 AM	1048	0.0	3000	1048	0	0.35	0	69.4	63.5	49.7
1-2 AM	616	0.0	3000	616	0	0.36	0	70.0	63.8	49.7
2-3 AM	457	0.0	3000	457	0	0.36	0	70.2	63.9	49.7
3-4 AM	282	0.0	3000	282	0	0.36	0	70.2	63.9	49.7
4-5 AM	302	0.0	3000	302	0	0.36	0	70.2	63.9	49.7
5-6 AM	540	0.0	3000	540	0	0.36	0	70.0	63.8	49.7
6-7 AM	905	0.0	3000	905	0	0.35	0	69.6	63.6	49.7
7-8 AM	1166	0.0	3000	1166	0	0.35	0	69.3	63.3	49.7
8-9 AM	1743	0.0	3000	1743	0	0.34	0	68.6	62.9	49.7
9-10 AM	2566	0.0	OFF	2566	0	0.00	0	67.6	67.6	66.6
10-11 AM	3286	0.0	OFF	3286	0	0.00	0	66.6	66.6	66.6
11AM-NOON	3427	0.0	OFF	3427	0	0.00	0	66.4	66.4	66.4
NOON-1PM	3642	0.0	OFF	3642	0	0.00	0	66.0	66.0	66.0
1-2 PM	3977	0.0	OFF	3977	0	0.00	0	63.7	63.7	63.7
2-3 PM	3881	0.0	OFF	3881	0	0.00	0	64.3	64.3	64.3
3-4 PM	3951	0.0	OFF	3951	0	0.00	0	63.8	63.8	63.8
4-5 PM	3827	0.0	OFF	3827	0	0.00	0	64.7	64.7	64.7
5-6 PM	3511	0.0	OFF	3511	0	0.00	0	66.4	66.4	66.4
6-7 PM	3124	0.0	OFF	3124	0	0.00	0	66.9	66.9	66.9
7-8 PM	2778	0.0	3000	2778	0	0.58	0	67.3	58.4	40.9
8-9 PM	2360	0.0	3000	2360	0	0.33	0	67.8	62.4	49.7
9-10 PM	1953	0.0	3000	1953	0	0.34	0	68.3	62.7	49.7
10-11 PM	1482	0.0	3000	1482	0	0.34	0	68.9	63.1	49.7
11PM-MID	920	0.0	3000	920	0	0.35	0	69.6	63.5	49.7

"OFF" INDICATES NO ROAD WORK (ALL LANES OPEN TO TRAFFIC)

*----- SITE BREAKDOWN DELAYS -----*	
BREAKDOWN DURATION (MINS)	0
RANGE OF QUEUE DELAY - MIN (VEH-H) MAX	0.0
AV BREAKDOWNS PER DAY	0.00
AV QUEUE DELAY/DAY (VEH-H)	0.0
AV TOTAL DELAY/DAY (VEH-H)	0.0

*----- SITE ACCIDENT DELAYS -----*	
BREAKDOWN DURATION (MINS)	0
RANGE OF QUEUE DELAY - MIN (VEH-H) MAX	0
AV BREAKDOWNS PER DAY	0
AV QUEUE DELAY/DAY (VEH-H)	0
AV TOTAL DELAY/DAY (VEH-H)	0

AVERAGE ACCIDENT NUMBERS (PIA/DAY)	
MAIN ROUTE WITHOUT WORKS	0.0354
MAIN ROUTE WITH WORKS	0.0343
'DIVERSION'	0.0000
PIA: Personal Injury Accidents	
IMPACTS ON ROAD USERS	
ROAD USER COSTS PER DAY	\$1,635
CONGESTED HOURS PER DAY*	0

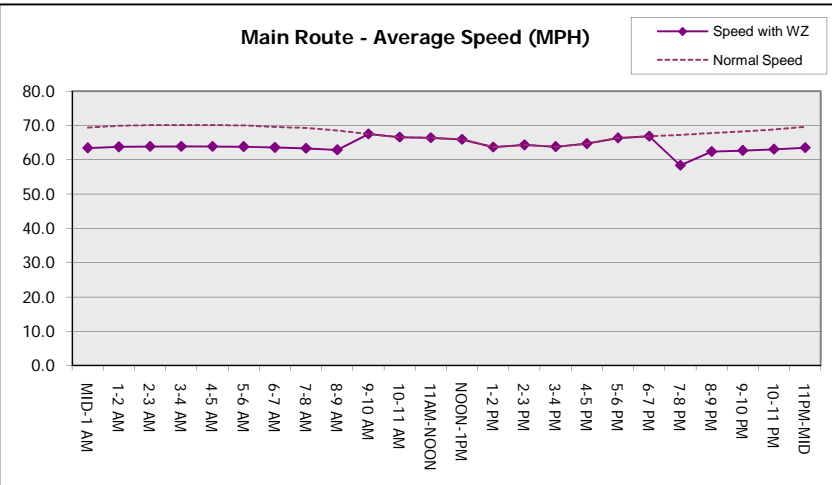
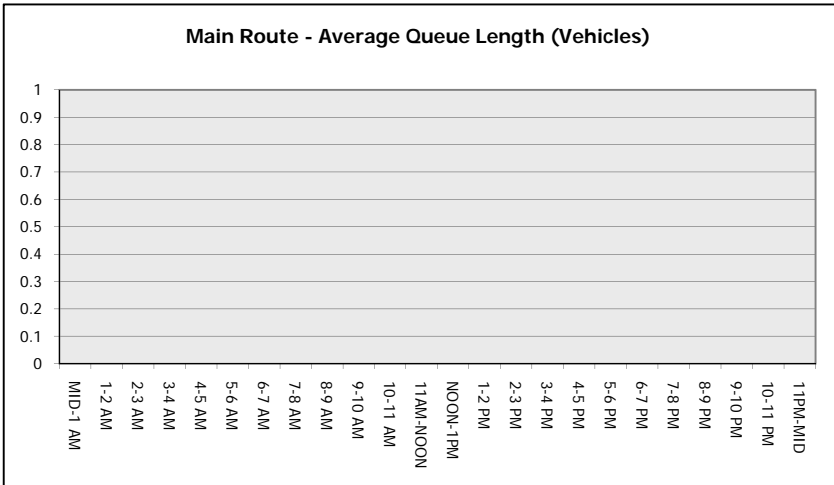
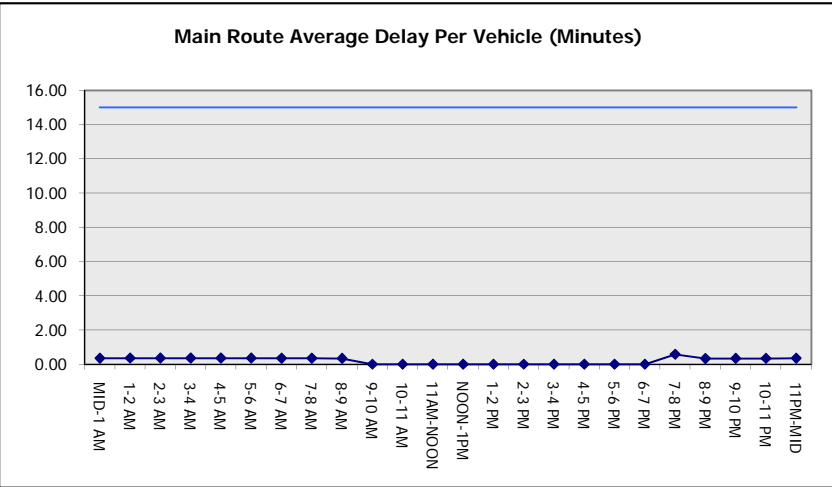
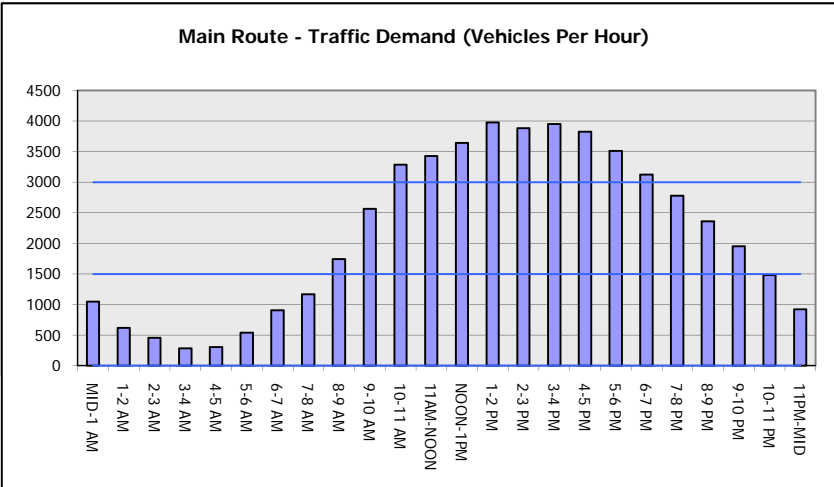
\*Delays Exceeding User-Specified Maximum

**IH 43/894: HALE INTERCHANGE TO STH 27 (MILWAUKEE COUNTY)**  
**NIGHTTIME CLOSURE**  
**NO DIVERSION ROUTE (MAX QUEUE METHOD)**

**AUGUST**  
 Analyzed for 2009  
 Construction Season

**GRAPHICAL REPRESENTATION OF TRAFFIC MODEL INPUT AND OUTPUT**

**SUNDAY SOUTHBOUND DIRECTION**



<b>IH 43/894: HALE INTERCHANGE TO STH 27 (MILWAUKEE COUNTY)</b> <b>NIGHTTIME CLOSURE</b> <b>NO DIVERSION ROUTE (MAX QUEUE METHOD)</b>	<b>AUGUST</b>
	Analyzed for 2009 Construction Season

**SUMMARY OF TRAFFIC MODEL OUTPUT**

SUNDAY NORTHBOUND DIRECTION

TIME OF DAY	FLOWS AND CAPACITY IN VEH/HR						AVERAGE SPEEDS IN MPH			
	MAIN ROUTE		SITE CAPA CITY	FLOW		AV.DEL PER VEH (MINS)	AVERAGE QUEUE (VEH)	MAIN ROUTE		SITE
	DEMAND FLOW	PCT HEAVY		MAIN ROUTE	'DIVER TED'			WITHOUT WORK ZONE	WITH WORK ZONE	
MID-1 AM	953	0.0	3000	953	0	0.35	0	69.6	63.5	49.7
1-2 AM	566	0.0	3000	566	0	0.36	0	70.0	63.8	49.7
2-3 AM	453	0.0	3000	453	0	0.36	0	70.2	63.9	49.7
3-4 AM	327	0.0	3000	327	0	0.36	0	70.2	63.9	49.7
4-5 AM	428	0.0	3000	428	0	0.36	0	70.2	63.9	49.7
5-6 AM	719	0.0	3000	719	0	0.36	0	69.9	63.7	49.7
6-7 AM	904	0.0	3000	904	0	0.35	0	69.6	63.6	49.7
7-8 AM	1127	0.0	3000	1127	0	0.35	0	69.3	63.4	49.7
8-9 AM	1583	0.0	3000	1583	0	0.34	0	68.7	63.0	49.7
9-10 AM	2411	0.0	OFF	2411	0	0.00	0	67.8	67.8	67.8
10-11 AM	3041	0.0	OFF	3041	0	0.00	0	66.9	66.9	66.9
11AM-NOON	3671	0.0	OFF	3671	0	0.00	0	65.8	65.8	65.8
NOON-1PM	4247	0.0	OFF	4247	0	0.00	0	61.9	61.9	61.9
1-2 PM	4333	0.0	OFF	4333	0	0.00	0	61.2	61.2	61.2
2-3 PM	4595	0.0	OFF	4595	0	0.00	0	59.5	59.5	59.5
3-4 PM	4544	0.0	OFF	4544	0	0.00	0	59.8	59.8	59.8
4-5 PM	4517	0.0	OFF	4517	0	0.00	0	60.0	60.0	60.0
5-6 PM	4433	0.0	OFF	4433	0	0.00	0	60.5	60.5	60.5
6-7 PM	3867	0.0	OFF	3867	0	0.00	0	64.5	64.5	64.5
7-8 PM	3217	0.0	2999	3217	0	3.15	141	66.8	36.8	37.3
8-9 PM	2817	0.0	2999	2817	0	3.44	158	67.3	35.5	38.4
9-10 PM	2171	0.0	3000	2171	0	0.35	0	68.1	62.3	49.7
10-11 PM	1445	0.0	3000	1445	0	0.34	0	68.9	63.2	49.7
11PM-MID	999	0.0	3000	999	0	0.35	0	69.5	63.5	49.7

"OFF" INDICATES NO ROAD WORK (ALL LANES OPEN TO TRAFFIC)

*----- SITE BREAKDOWN DELAYS -----*	
BREAKDOWN DURATION (MINS)	0
RANGE OF QUEUE DELAY - MIN (VEH-H) MAX	0.0
AV BREAKDOWNS PER DAY	0.00
AV QUEUE DELAY/DAY (VEH-H)	0.0
AV TOTAL DELAY/DAY (VEH-H)	0.0

*----- SITE ACCIDENT DELAYS -----*	
BREAKDOWN DURATION (MINS)	0
RANGE OF QUEUE DELAY - MIN (VEH-H) MAX	0
AV BREAKDOWNS PER DAY	0
AV QUEUE DELAY/DAY (VEH-H)	0
AV TOTAL DELAY/DAY (VEH-H)	0

AVERAGE ACCIDENT NUMBERS (PIA/DAY)	
MAIN ROUTE WITHOUT WORKS	0.0393
MAIN ROUTE WITH WORKS	0.0381
'DIVERSION'	0.0000

PIA: Personal Injury Accidents

ECONOMIC IMPACT ON ROAD USERS	
ROAD USER COSTS PER DAY	\$6,151
CONGESTED HOURS PER DAY*	0

\*Delays Exceeding User-Specified Maximum

**IH 43/894: HALE INTERCHANGE TO STH 27 (MILWAUKEE COUNTY)  
NIGHTTIME CLOSURE  
NO DIVERSION ROUTE (MAX QUEUE METHOD)**

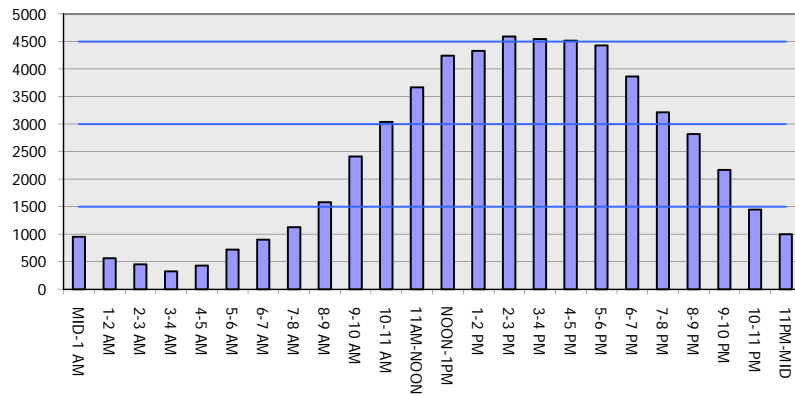
**AUGUST**

Analyzed for 2009  
Construction Season

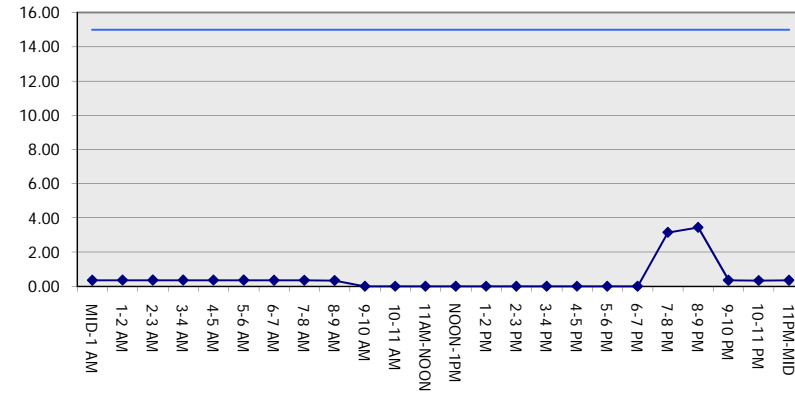
**GRAPHICAL REPRESENTATION OF TRAFFIC MODEL INPUT AND OUTPUT**

**SUNDAY NORTHBOUND DIRECTION**

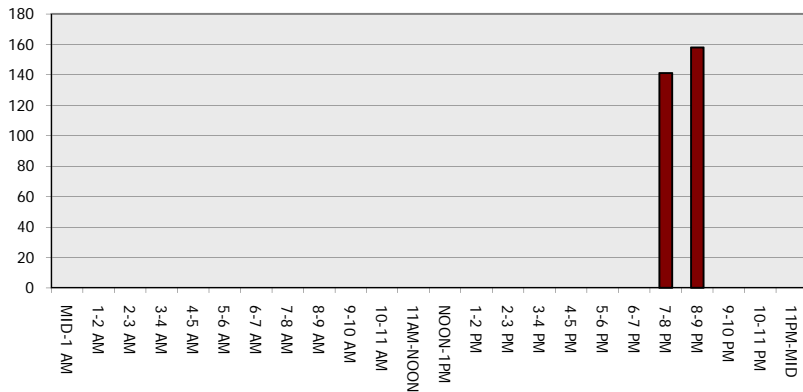
**Main Route - Traffic Demand (Vehicles Per Hour)**



**Main Route Average Delay Per Vehicle (Minutes)**



**Main Route - Average Queue Length (Vehicles)**



**Main Route - Average Speed (MPH)**

