

<b>IH 43/894: HALE INTERCHANGE TO STH 27 (MILWAUKEE COUNTY)                  NIGHTTIME CLOSURE                  NO DIVERSION ROUTE (MAX QUEUE METHOD)</b>	<b>AUGUST</b>
	Analyzed for 2009 Construction Season

**SUMMARY OF TRAFFIC MODEL OUTPUT**

SATURDAY SOUTHBOUND DIRECTION

TIME OF DAY	FLOWS AND CAPACITY IN VEH/HR						AVERAGE SPEEDS IN MPH			
	MAIN ROUTE		SITE CAPA CITY	FLOW		AV.DEL PER VEH (MINS)	AVERAGE QUEUE (VEH)	MAIN ROUTE		SITE
	DEMAND FLOW	PCT HEAVY		MAIN ROUTE	'DIVER TED'			WITHOUT WORK ZONE	WITH WORK ZONE	
MID-1 AM	1141	0.0	3000	1141	0	0.35	0	69.3	63.4	49.7
1-2 AM	689	0.0	3000	689	0	0.36	0	69.9	63.7	49.7
2-3 AM	570	0.0	3000	570	0	0.36	0	70.0	63.8	49.7
3-4 AM	478	0.0	3000	478	0	0.36	0	70.1	63.9	49.7
4-5 AM	546	0.0	3000	546	0	0.36	0	70.0	63.8	49.7
5-6 AM	1018	0.0	3000	1018	0	0.35	0	69.5	63.5	49.7
6-7 AM	1696	0.0	3000	1696	0	0.34	0	68.6	62.9	49.7
7-8 AM	2388	0.0	2999	2388	0	0.39	0	67.8	61.5	47.4
8-9 AM	3123	0.0	OFF	3123	0	0.00	0	66.9	66.9	66.9
9-10 AM	3585	0.0	OFF	3585	0	0.00	0	66.3	66.3	66.3
10-11 AM	4099	0.0	OFF	4099	0	0.00	0	62.8	62.8	62.8
11AM-NOON	4312	0.0	OFF	4312	0	0.00	0	61.4	61.4	61.4
NOON-1PM	4498	0.0	OFF	4498	0	0.00	0	60.1	60.1	60.1
1-2 PM	4473	0.0	OFF	4473	0	0.00	0	60.3	60.3	60.3
2-3 PM	4270	0.0	OFF	4270	0	0.00	0	61.7	61.7	61.7
3-4 PM	4207	0.0	OFF	4207	0	0.00	0	62.1	62.1	62.1
4-5 PM	3999	0.0	OFF	3999	0	0.00	0	63.5	63.5	63.5
5-6 PM	3585	0.0	OFF	3585	0	0.00	0	66.3	66.3	66.3
6-7 PM	3017	0.0	2999	3017	0	1.46	41	67.0	48.6	37.6
7-8 PM	2541	0.0	3000	2541	0	0.43	0	67.6	60.7	46.0
8-9 PM	2182	0.0	3000	2182	0	0.33	0	68.0	62.5	49.7
9-10 PM	1983	0.0	3000	1983	0	0.33	0	68.2	62.7	49.7
10-11 PM	1678	0.0	3000	1678	0	0.34	0	68.6	63.0	49.7
11PM-MID	1343	0.0	3000	1343	0	0.35	0	69.1	63.2	49.7

"OFF" INDICATES NO ROAD WORK (ALL LANES OPEN TO TRAFFIC)

*----- SITE BREAKDOWN DELAYS -----*	
BREAKDOWN DURATION (MINS)	0
RANGE OF QUEUE DELAY - MIN (VEH-H) MAX	0.0
AV BREAKDOWNS PER DAY	0.00
AV QUEUE DELAY/DAY (VEH-H)	0.0
AV TOTAL DELAY/DAY (VEH-H)	0.0

*----- SITE ACCIDENT DELAYS -----*	
BREAKDOWN DURATION (MINS)	0
RANGE OF QUEUE DELAY - MIN (VEH-H) MAX	0
AV BREAKDOWNS PER DAY	0
AV QUEUE DELAY/DAY (VEH-H)	0
AV TOTAL DELAY/DAY (VEH-H)	0

AVERAGE ACCIDENT NUMBERS (PIA/DAY)	
MAIN ROUTE WITHOUT WORKS	0.0420
MAIN ROUTE WITH WORKS	0.0406
'DIVERSION'	0.0000
<small>PIA: Personal Injury Accidents</small>	
IMPACTS ON ROAD USERS	
ROAD USER COSTS PER DAY	\$2,923
CONGESTED HOURS PER DAY*	0

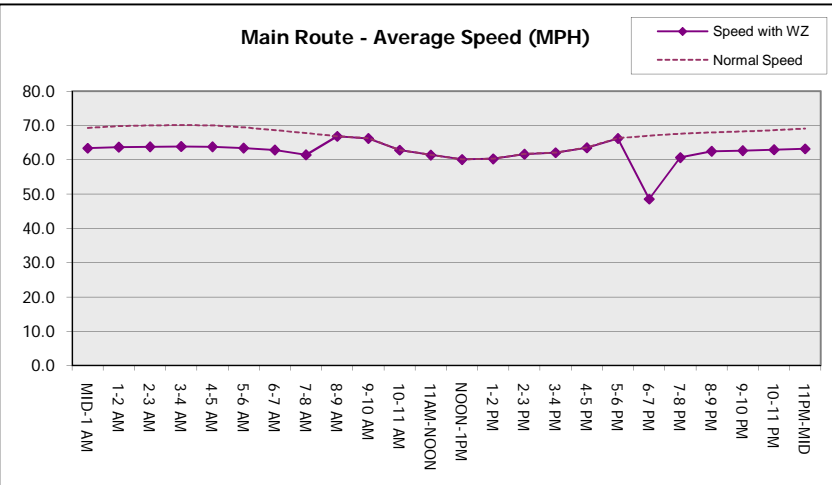
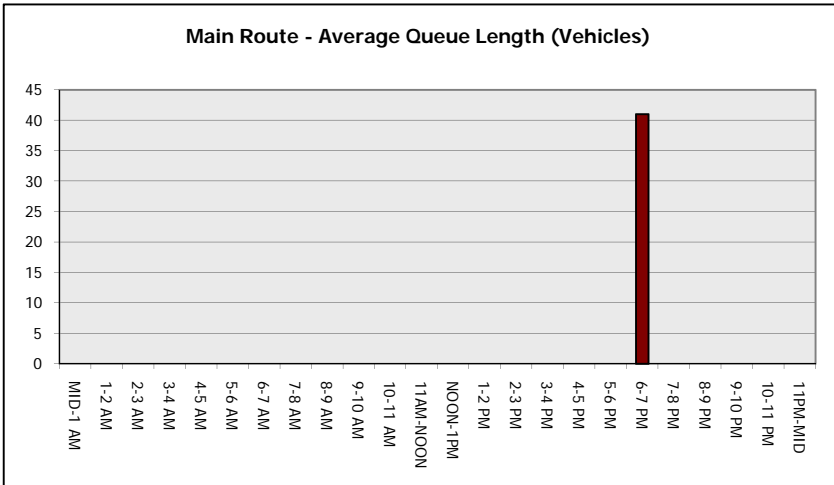
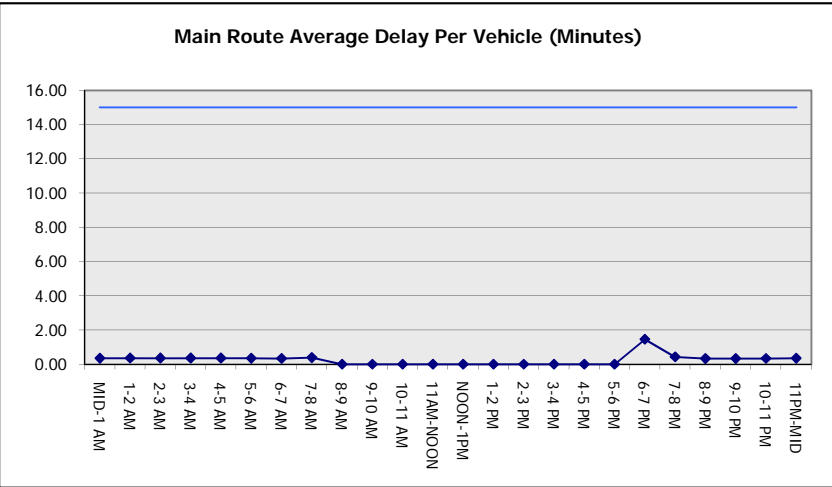
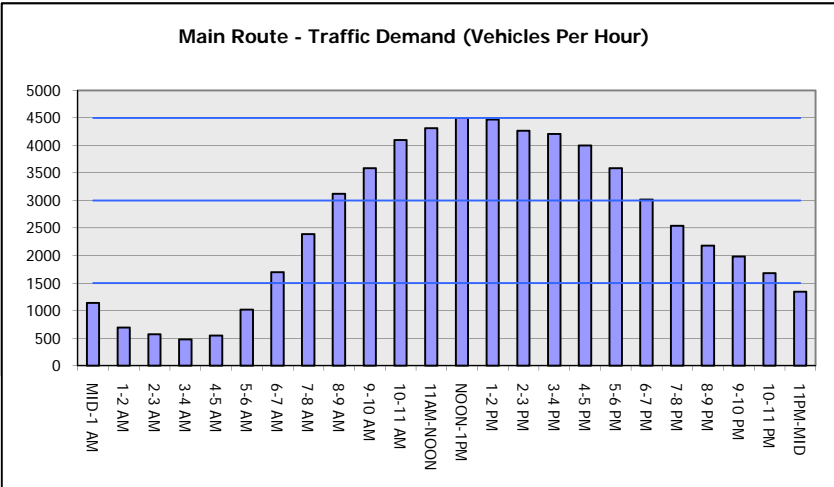
\*Delays Exceeding User-Specified Maximum

**IH 43/894: HALE INTERCHANGE TO STH 27 (MILWAUKEE COUNTY)**  
**NIGHTTIME CLOSURE**  
**NO DIVERSION ROUTE (MAX QUEUE METHOD)**

**AUGUST**  
 Analyzed for 2009  
 Construction Season

**GRAPHICAL REPRESENTATION OF TRAFFIC MODEL INPUT AND OUTPUT**

**SATURDAY SOUTHBOUND DIRECTION**



<b>IH 43/894: HALE INTERCHANGE TO STH 27 (MILWAUKEE COUNTY)                  NIGHTTIME CLOSURE                  NO DIVERSION ROUTE (MAX QUEUE METHOD)</b>	<b>AUGUST</b>
	Analyzed for 2009 Construction Season

**SUMMARY OF TRAFFIC MODEL OUTPUT**

SATURDAY NORTHBOUND DIRECTION

TIME OF DAY	FLOWS AND CAPACITY IN VEH/HR							AVERAGE SPEEDS IN MPH		
	MAIN ROUTE		SITE CAPA CITY	FLOW		AV.DEL PER VEH (MINS)	AVERAGE QUEUE (VEH)	MAIN ROUTE		SITE
	DEMAND FLOW	PCT HEAVY		MAIN ROUTE	'DIVER TED'			WITHOUT WORK ZONE	WITH WORK ZONE	
MID-1 AM	1075	0.0	3000	1075	0	0.35	0	69.4	63.4	49.7
1-2 AM	604	0.0	3000	604	0	0.36	0	70.0	63.8	49.7
2-3 AM	518	0.0	3000	518	0	0.36	0	70.1	63.9	49.7
3-4 AM	456	0.0	3000	456	0	0.36	0	70.2	63.9	49.7
4-5 AM	686	0.0	3000	686	0	0.36	0	69.9	63.7	49.7
5-6 AM	1174	0.0	3000	1174	0	0.35	0	69.3	63.3	49.7
6-7 AM	1420	0.0	3000	1420	0	0.34	0	69.0	63.2	49.7
7-8 AM	1878	0.0	3000	1878	0	0.34	0	68.4	62.8	49.7
8-9 AM	2523	0.0	OFF	2523	0	0.00	0	67.6	67.6	67.6
9-10 AM	3190	0.0	OFF	3190	0	0.00	0	66.8	66.8	66.8
10-11 AM	3635	0.0	OFF	3635	0	0.00	0	66.0	66.0	66.0
11AM-NOON	3996	0.0	OFF	3996	0	0.00	0	63.5	63.5	63.5
NOON-1PM	4210	0.0	OFF	4210	0	0.00	0	62.1	62.1	62.1
1-2 PM	4180	0.0	OFF	4180	0	0.00	0	62.3	62.3	62.3
2-3 PM	4352	0.0	OFF	4352	0	0.00	0	61.1	61.1	61.1
3-4 PM	4323	0.0	OFF	4323	0	0.00	0	61.3	61.3	61.3
4-5 PM	4102	0.0	OFF	4102	0	0.00	0	62.8	62.8	62.8
5-6 PM	3857	0.0	OFF	3857	0	0.00	0	64.5	64.5	64.5
6-7 PM	3345	0.0	2999	3345	0	4.08	202	66.6	32.4	37.3
7-8 PM	2894	0.0	2999	2894	0	6.40	313	67.1	25.2	37.3
8-9 PM	2626	0.0	2999	2626	0	1.77	86	67.4	46.1	41.7
9-10 PM	2461	0.0	3000	2461	0	0.38	0	67.7	61.6	47.8
10-11 PM	1948	0.0	3000	1948	0	0.34	0	68.3	62.7	49.7
11PM-MID	1430	0.0	3000	1430	0	0.34	0	68.9	63.2	49.7

**"OFF" INDICATES NO ROAD WORK (ALL LANES OPEN TO TRAFFIC)**

*----- SITE BREAKDOWN DELAYS -----*	
BREAKDOWN DURATION (MINS)	0
RANGE OF QUEUE DELAY - MIN (VEH-H) MAX	0.0
AV BREAKDOWNS PER DAY	0.00
AV QUEUE DELAY/DAY (VEH-H)	0.0
AV TOTAL DELAY/DAY (VEH-H)	0.0

*----- SITE ACCIDENT DELAYS -----*	
BREAKDOWN DURATION (MINS)	0
RANGE OF QUEUE DELAY - MIN (VEH-H) MAX	0
AV BREAKDOWNS PER DAY	0
AV QUEUE DELAY/DAY (VEH-H)	0
AV TOTAL DELAY/DAY (VEH-H)	0

AVERAGE ACCIDENT NUMBERS (PIA/DAY)	
MAIN ROUTE WITHOUT WORKS	0.0417
MAIN ROUTE WITH WORKS	0.0402
'DIVERSION'	0.0000

PIA: Personal Injury Accidents

ECONOMIC IMPACT ON ROAD USERS	
ROAD USER COSTS PER DAY	\$11,062
CONGESTED HOURS PER DAY*	0

\*Delays Exceeding User-Specified Maximum

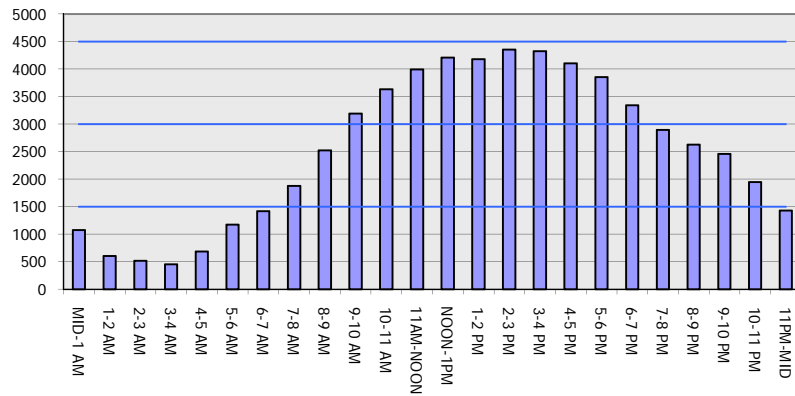
**IH 43/894: HALE INTERCHANGE TO STH 27 (MILWAUKEE COUNTY)**  
**NIGHTTIME CLOSURE**  
**NO DIVERSION ROUTE (MAX QUEUE METHOD)**

**AUGUST**

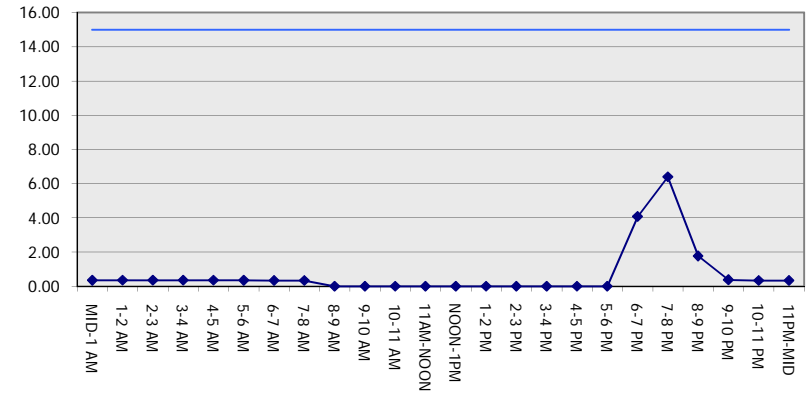
Analyzed for 2009  
 Construction Season

**GRAPHICAL REPRESENTATION OF TRAFFIC MODEL INPUT AND OUTPUT**  
**SATURDAY NORTHBOUND DIRECTION**

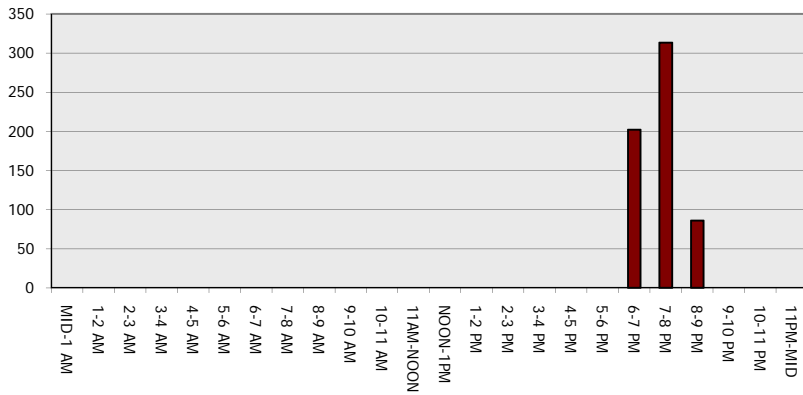
**Main Route - Traffic Demand (Vehicles Per Hour)**



**Main Route Average Delay Per Vehicle (Minutes)**



**Main Route - Average Queue Length (Vehicles)**



**Main Route - Average Speed (MPH)**

