

IH 43/894: HALE INTERCHANGE TO STH 27 (MILWAUKEE COUNTY) NIGHTTIME 2 LANE CLOSURE NO DIVERSION ROUTE (MAX QUEUE METHOD)	AUGUST
	Analyzed for 2009 Construction Season

SUMMARY OF TRAFFIC MODEL OUTPUT

MON-THUR SOUTHBOUND DIRECTION

TIME OF DAY	FLOWS AND CAPACITY IN VEH/HR						AVERAGE SPEEDS IN MPH				
	MAIN ROUTE		SITE CAPA CITY	FLOW		AV.DEL PER VEH (MINS)	AVERAGE QUEUE (VEH)	MAIN ROUTE		SITE	
	DEMAND FLOW	PCT HEAVY		MAIN ROUTE	'DIVER TED'			WITHOUT WORK ZONE	WITH WORK ZONE		
MID-1 AM	768	0.0	1500	768	0	0.88	12	69.8	56.4	42.4	
1-2 AM	497	0.0	1500	497	0	0.53	0	70.1	61.2	43.5	
2-3 AM	413	0.0	1500	413	0	0.52	0	70.2	61.4	43.8	
3-4 AM	485	0.0	1500	485	0	0.53	0	70.1	61.3	43.6	
4-5 AM	899	0.0	1500	899	0	0.58	0	69.6	60.2	42.0	
5-6 AM	2409	0.0	OFF	2409	0	0.00	0	67.8	67.8	67.8	
6-7 AM	4307	0.0	OFF	4307	0	0.00	0	61.4	61.4	61.4	
7-8 AM	4586	0.0	OFF	4586	0	0.00	0	59.6	59.6	59.6	
8-9 AM	3846	0.0	OFF	3846	0	0.00	0	64.6	64.6	64.6	
9-10 AM	3594	0.0	OFF	3594	0	0.00	0	66.3	66.3	66.3	
10-11 AM	3704	0.0	OFF	3704	0	0.00	0	65.6	65.6	65.6	
11AM-NOON	3793	0.0	OFF	3793	0	0.00	0	65.0	65.0	65.0	
NOON-1PM	3827	0.0	OFF	3827	0	0.00	0	64.7	64.7	64.7	
1-2 PM	4103	0.0	OFF	4103	0	0.00	0	62.8	62.8	62.8	
2-3 PM	4663	0.0	OFF	4663	0	0.00	0	59.0	59.0	59.0	
3-4 PM	5146	0.0	OFF	5146	0	0.00	0	55.7	55.7	55.7	
4-5 PM	5306	0.0	OFF	5306	0	0.00	0	54.6	54.6	54.6	
5-6 PM	5114	0.0	OFF	5114	0	0.00	0	55.9	55.9	55.9	
6-7 PM	4012	0.0	OFF	4012	0	0.00	0	63.5	63.5	63.5	
7-8 PM	2904	0.0	1499	1550	1354	16.48+	412	67.1	12.7	36.6	
8-9 PM	2386	0.0	1499	1824	562	13.18+	335	67.8	15.2	32.8	
9-10 PM	2185	0.0	1499	1500	685	16.33+	399	68.0	12.8	30.8	
10-11 PM	1721	0.0	1500	1526	196	16.24+	396	68.6	12.9	30.8	
11PM-MID	1228	0.0	1499	1228	0	11.62	293	69.2	16.8	32.0	

"OFF" INDICATES NO ROAD WORK (ALL LANES OPEN TO TRAFFIC)

+ INDICATES QUEUEING EXCEEDS USER-SPECIFIED MAXIMUM LIMIT

----- SITE BREAKDOWN DELAYS -----	
BREAKDOWN DURATION (MINS)	0
RANGE OF QUEUE DELAY - MIN (VEH-H) MAX	0.0
AV BREAKDOWNS PER DAY	0.00
AV QUEUE DELAY/DAY (VEH-H)	0.0
AV TOTAL DELAY/DAY (VEH-H)	0.0

----- SITE ACCIDENT DELAYS -----	
BREAKDOWN DURATION (MINS)	0
RANGE OF QUEUE DELAY - MIN (VEH-H) MAX	0
AV BREAKDOWNS PER DAY	0
AV QUEUE DELAY/DAY (VEH-H)	0
AV TOTAL DELAY/DAY (VEH-H)	0

AVERAGE ACCIDENT NUMBERS (PIA/DAY)	
MAIN ROUTE WITHOUT WORKS	0.0492
MAIN ROUTE WITH WORKS	0.0466
'DIVERSION'	0.0044
<small>PIA: Personal Injury Accidents</small>	
IMPACTS ON ROAD USERS	
ROAD USER COSTS PER DAY	\$35,934
CONGESTED HOURS PER DAY*	4

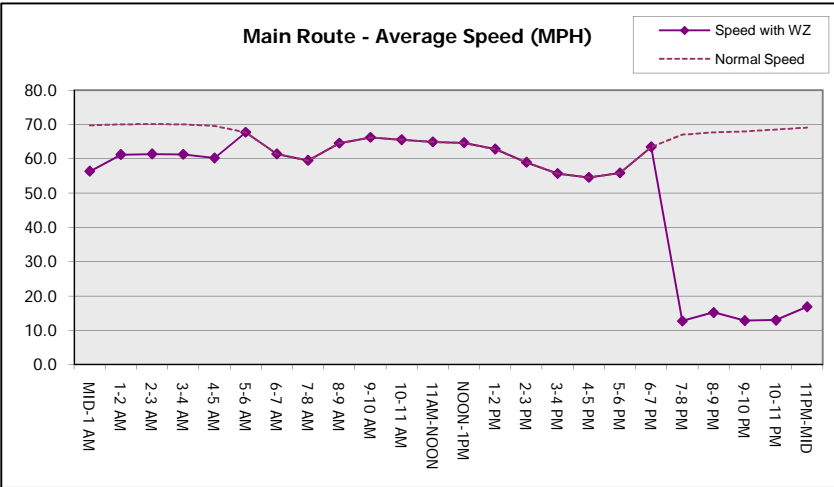
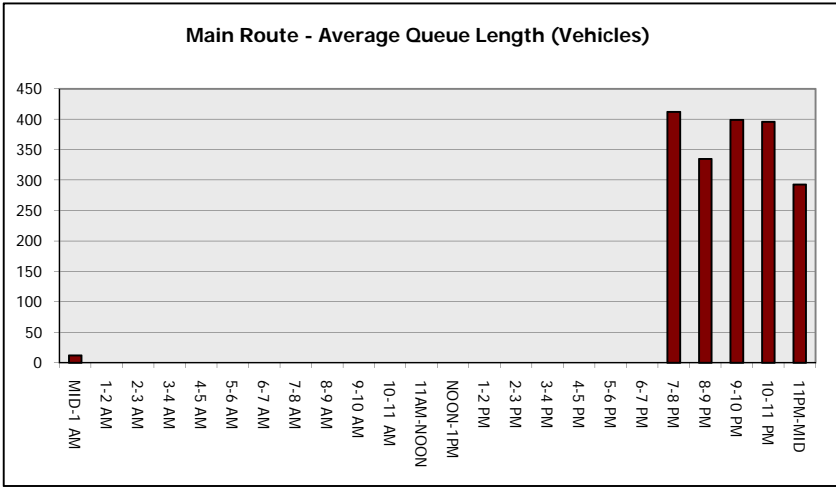
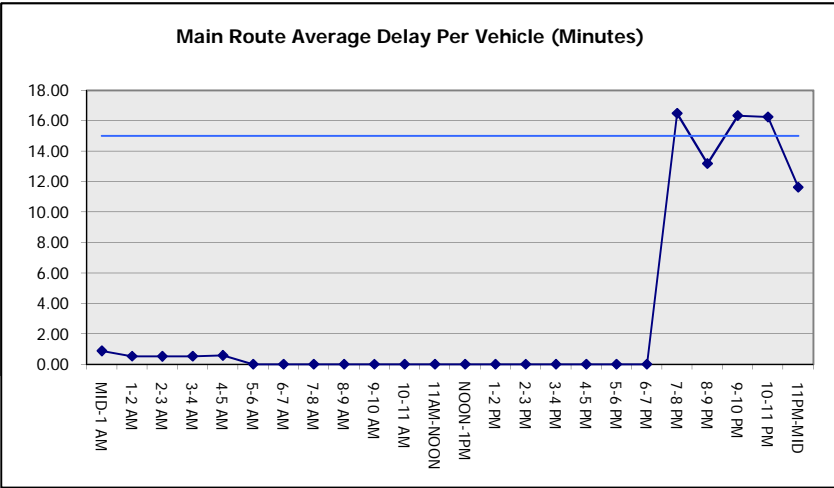
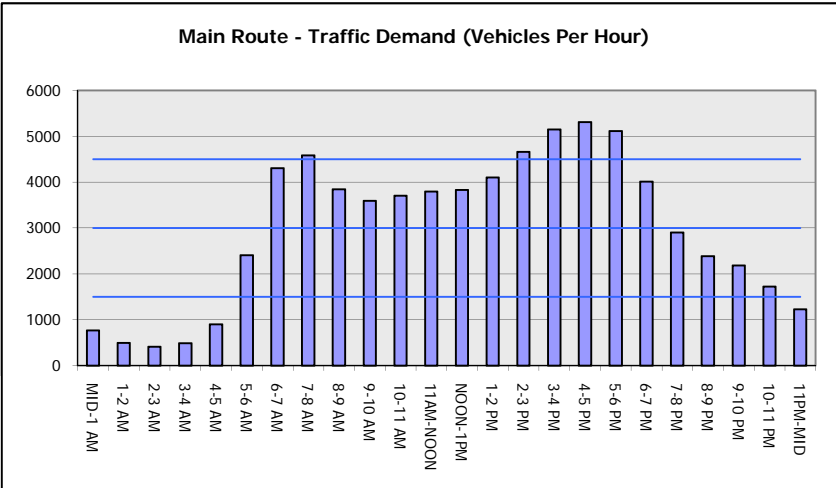
*Delays Exceeding User-Specified Maximum

IH 43/894: HALE INTERCHANGE TO STH 27 (MILWAUKEE COUNTY)
NIGHTTIME 2 LANE CLOSURE
NO DIVERSION ROUTE (MAX QUEUE METHOD)

AUGUST
 Analyzed for 2009
 Construction Season

GRAPHICAL REPRESENTATION OF TRAFFIC MODEL INPUT AND OUTPUT

MON-THUR SOUTHBOUND DIRECTION



IH 43/894: HALE INTERCHANGE TO STH 27 (MILWAUKEE COUNTY) NIGHTTIME 2 LANE CLOSURE NO DIVERSION ROUTE (MAX QUEUE METHOD)	AUGUST
	Analyzed for 2009 Construction Season

SUMMARY OF TRAFFIC MODEL OUTPUT

MON-THUR NORTHBOUND DIRECTION

TIME OF DAY	FLOWS AND CAPACITY IN VEH/HR							AVERAGE SPEEDS IN MPH			
	MAIN ROUTE		SITE CAPA CITY	FLOW		AV.DEL PER VEH (MINS)	AVERAGE QUEUE (VEH)	MAIN ROUTE		SITE	
	DEMAND FLOW	PCT HEAVY		MAIN ROUTE	'DIVER TED'			WITHOUT WORK ZONE	WITH WORK ZONE		
MID-1 AM	611	0.0	1500	611	0	0.57	0	70.0	60.5	43.1	
1-2 AM	397	0.0	1500	397	0	0.52	0	70.2	61.5	43.9	
2-3 AM	370	0.0	1500	370	0	0.52	0	70.2	61.5	44.0	
3-4 AM	515	0.0	1500	515	0	0.53	0	70.1	61.2	43.5	
4-5 AM	1106	0.0	1499	1106	0	0.74	0	69.4	57.8	37.9	
5-6 AM	2661	0.0	OFF	2661	0	0.00	0	67.4	67.4	67.4	
6-7 AM	4662	0.0	OFF	4662	0	0.00	0	59.0	59.0	59.0	
7-8 AM	5458	0.0	OFF	5458	0	0.00	0	53.6	53.6	53.6	
8-9 AM	4558	0.0	OFF	4558	0	0.00	0	59.7	59.7	59.7	
9-10 AM	3691	0.0	OFF	3691	0	0.00	0	65.6	65.6	65.6	
10-11 AM	3502	0.0	OFF	3502	0	0.00	0	66.4	66.4	66.4	
11AM-NOON	3605	0.0	OFF	3605	0	0.00	0	66.2	66.2	66.2	
NOON-1PM	3832	0.0	OFF	3832	0	0.00	0	64.6	64.6	64.6	
1-2 PM	4037	0.0	OFF	4037	0	0.00	0	63.3	63.3	63.3	
2-3 PM	4522	0.0	OFF	4522	0	0.00	0	60.0	60.0	60.0	
3-4 PM	4952	0.0	OFF	4952	0	0.00	0	57.0	57.0	57.0	
4-5 PM	5267	0.0	OFF	5267	0	0.00	0	54.9	54.9	54.9	
5-6 PM	5413	0.0	OFF	5413	0	0.00	0	53.9	53.9	53.9	
6-7 PM	4236	0.0	OFF	4236	0	0.00	0	61.9	61.9	61.9	
7-8 PM	3123	0.0	1499	1550	1573	16.46+	412	66.9	12.7	36.6	
8-9 PM	2774	0.0	1499	1581	1193	14.40+	380	67.3	14.2	36.1	
9-10 PM	2365	0.0	1499	1670	695	14.25+	364	67.8	14.3	34.4	
10-11 PM	1631	0.0	1499	1554	76	15.42+	376	68.7	13.5	30.8	
11PM-MID	1183	0.0	1499	1183	0	8.65	229	69.2	20.9	33.7	

"OFF" INDICATES NO ROAD WORK (ALL LANES OPEN TO TRAFFIC)

+ INDICATES QUEUEING EXCEEDS USER-SPECIFIED MAXIMUM LIMIT

----- SITE BREAKDOWN DELAYS -----	
BREAKDOWN DURATION (MINS)	0
RANGE OF QUEUE DELAY - MIN (VEH-H) MAX	0.0
AV BREAKDOWNS PER DAY	0.00
AV QUEUE DELAY/DAY (VEH-H)	0.0
AV TOTAL DELAY/DAY (VEH-H)	0.0

----- SITE ACCIDENT DELAYS -----	
BREAKDOWN DURATION (MINS)	0
RANGE OF QUEUE DELAY - MIN (VEH-H) MAX	0
AV BREAKDOWNS PER DAY	0
AV QUEUE DELAY/DAY (VEH-H)	0
AV TOTAL DELAY/DAY (VEH-H)	0

AVERAGE ACCIDENT NUMBERS (PIA/DAY)	
MAIN ROUTE WITHOUT WORKS	0.0510
MAIN ROUTE WITH WORKS	0.0478
'DIVERSION'	0.0056

PIA: Personal Injury Accidents

ECONOMIC IMPACT ON ROAD USERS	
ROAD USER COSTS PER DAY	\$36,642
CONGESTED HOURS PER DAY*	4

*Delays Exceeding User-Specified Maximum

IH 43/894: HALE INTERCHANGE TO STH 27 (MILWAUKEE COUNTY)
NIGHTTIME 2 LANE CLOSURE
NO DIVERSION ROUTE (MAX QUEUE METHOD)

AUGUST

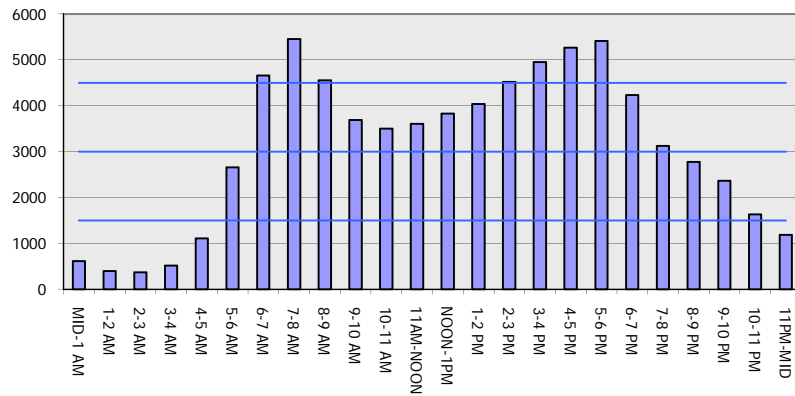
Analyzed for 2009
 Construction Season

GRAPHICAL REPRESENTATION OF TRAFFIC MODEL INPUT AND OUTPUT

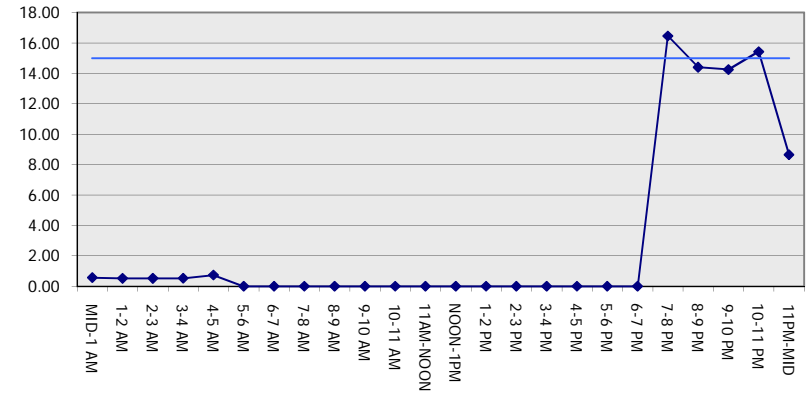
MON-THUR

NORTHBOUND DIRECTION

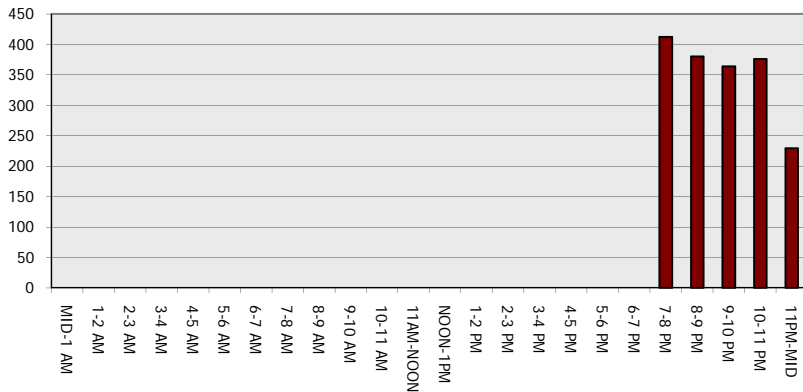
Main Route - Traffic Demand (Vehicles Per Hour)



Main Route Average Delay Per Vehicle (Minutes)



Main Route - Average Queue Length (Vehicles)



Main Route - Average Speed (MPH)

