

IH 43/894: HALE INTERCHANGE TO STH 27 (MILWAUKEE COUNTY) NIGHTTIME CLOSURE NO DIVERSION ROUTE (MAX QUEUE METHOD)	AUGUST
	Analyzed for 2009 Construction Season

SUMMARY OF TRAFFIC MODEL OUTPUT

FRIDAY SOUTHBOUND DIRECTION

TIME OF DAY	FLOWS AND CAPACITY IN VEH/HR						AVERAGE SPEEDS IN MPH			
	MAIN ROUTE		SITE CAPA CITY	FLOW		AV.DEL PER VEH (MINS)	AVERAGE QUEUE (VEH)	MAIN ROUTE		SITE
	DEMAND FLOW	PCT HEAVY		MAIN ROUTE	'DIVER TED'			WITHOUT WORK ZONE	WITH WORK ZONE	
MID-1 AM	1006	0.0	3000	1006	0	0.35	0	69.5	63.5	49.7
1-2 AM	668	0.0	3000	668	0	0.36	0	69.9	63.8	49.7
2-3 AM	575	0.0	3000	575	0	0.36	0	70.0	63.8	49.7
3-4 AM	579	0.0	3000	579	0	0.36	0	70.0	63.8	49.7
4-5 AM	956	0.0	3000	956	0	0.35	0	69.6	63.5	49.7
5-6 AM	2410	0.0	OFF	2410	0	0.00	0	67.8	67.8	67.8
6-7 AM	4197	0.0	OFF	4197	0	0.00	0	62.2	62.2	62.2
7-8 AM	4571	0.0	OFF	4571	0	0.00	0	59.6	59.6	59.6
8-9 AM	4050	0.0	OFF	4050	0	0.00	0	63.2	63.2	63.2
9-10 AM	3977	0.0	OFF	3977	0	0.00	0	63.7	63.7	63.7
10-11 AM	4353	0.0	OFF	4353	0	0.00	0	61.1	61.1	61.1
11AM-NOON	4423	0.0	OFF	4423	0	0.00	0	60.6	60.6	60.6
NOON-1PM	4668	0.0	OFF	4668	0	0.00	0	58.9	58.9	58.9
1-2 PM	4703	0.0	OFF	4703	0	0.00	0	58.7	58.7	58.7
2-3 PM	4828	0.0	OFF	4828	0	0.00	0	57.9	57.9	57.9
3-4 PM	5107	0.0	OFF	5107	0	0.00	0	56.0	56.0	56.0
4-5 PM	5328	0.0	OFF	5328	0	0.00	0	54.5	54.5	54.5
5-6 PM	5115	0.0	OFF	5115	0	0.00	0	55.9	55.9	55.9
6-7 PM	4553	0.0	OFF	4553	0	0.00	0	59.7	59.7	59.7
7-8 PM	3578	0.0	2999	3578	0	6.30	343	66.3	25.3	37.3
8-9 PM	2812	0.0	2999	2812	0	10.02	515	67.3	18.6	37.3
9-10 PM	2595	0.0	3000	2595	0	3.95	213	67.5	33.2	40.0
10-11 PM	1994	0.0	3000	1994	0	0.33	0	68.2	62.7	49.7
11PM-MID	1526	0.0	3000	1526	0	0.34	0	68.8	63.1	49.7

"OFF" INDICATES NO ROAD WORK (ALL LANES OPEN TO TRAFFIC)

----- SITE BREAKDOWN DELAYS -----	
BREAKDOWN DURATION (MINS)	0
RANGE OF QUEUE DELAY - MIN (VEH-H) MAX	0.0
AV BREAKDOWNS PER DAY	0.00
AV QUEUE DELAY/DAY (VEH-H)	0.0
AV TOTAL DELAY/DAY (VEH-H)	0.0

----- SITE ACCIDENT DELAYS -----	
BREAKDOWN DURATION (MINS)	0
RANGE OF QUEUE DELAY - MIN (VEH-H) MAX	0
AV BREAKDOWNS PER DAY	0
AV QUEUE DELAY/DAY (VEH-H)	0
AV TOTAL DELAY/DAY (VEH-H)	0

AVERAGE ACCIDENT NUMBERS (PIA/DAY)	
MAIN ROUTE WITHOUT WORKS	0.0538
MAIN ROUTE WITH WORKS	0.0527
'DIVERSION'	0.0000
PIA: Personal Injury Accidents	
IMPACTS ON ROAD USERS	
ROAD USER COSTS PER DAY	\$15,685
CONGESTED HOURS PER DAY*	0

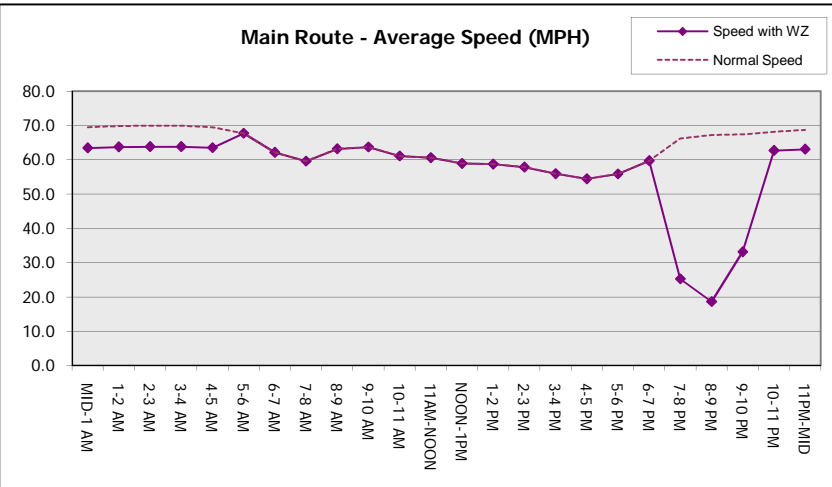
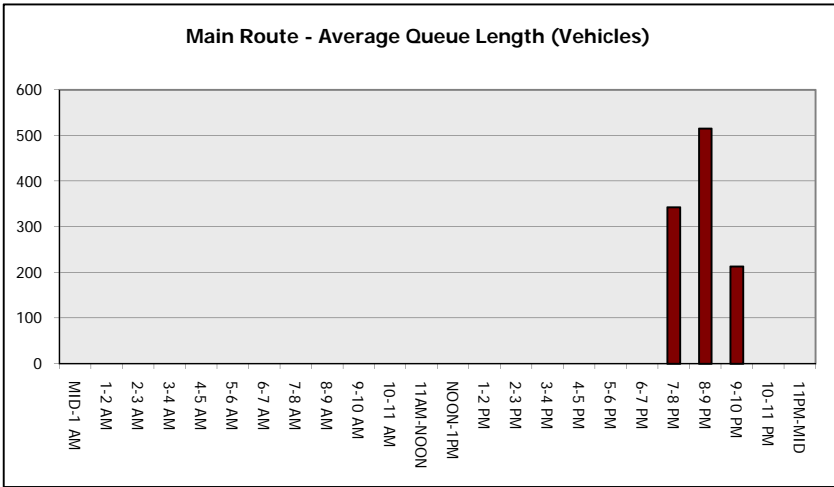
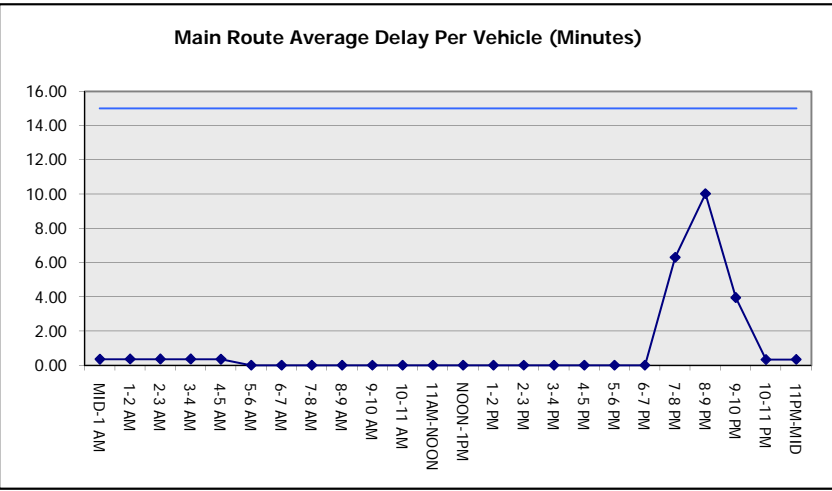
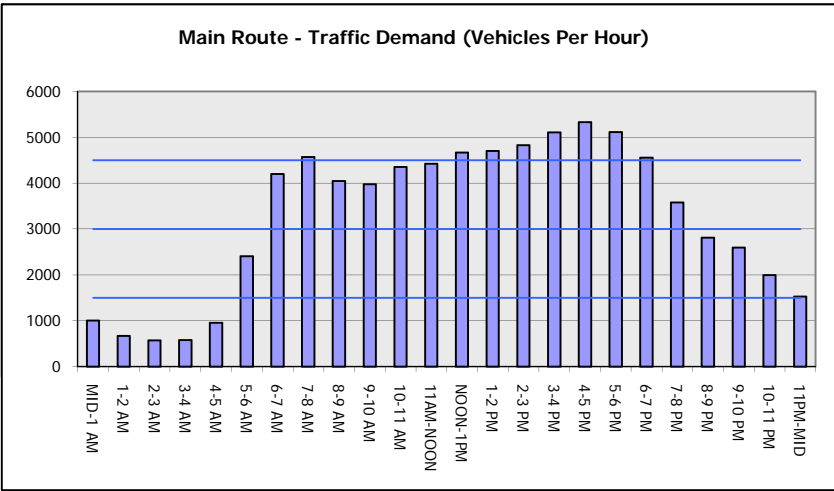
*Delays Exceeding User-Specified Maximum

**IH 43/894: HALE INTERCHANGE TO STH 27 (MILWAUKEE COUNTY)
 NIGHTTIME CLOSURE
 NO DIVERSION ROUTE (MAX QUEUE METHOD)**

AUGUST
 Analyzed for 2009
 Construction Season

GRAPHICAL REPRESENTATION OF TRAFFIC MODEL INPUT AND OUTPUT

FRIDAY SOUTHBOUND DIRECTION



IH 43/894: HALE INTERCHANGE TO STH 27 (MILWAUKEE COUNTY) NIGHTTIME CLOSURE NO DIVERSION ROUTE (MAX QUEUE METHOD)	AUGUST
	Analyzed for 2009 Construction Season

SUMMARY OF TRAFFIC MODEL OUTPUT

FRIDAY NORTHBOUND DIRECTION

TIME OF DAY	FLOWS AND CAPACITY IN VEH/HR							AVERAGE SPEEDS IN MPH		
	MAIN ROUTE		SITE CAPA CITY	FLOW		AV.DEL PER VEH (MINS)	AVERAGE QUEUE (VEH)	MAIN ROUTE		SITE
	DEMAND FLOW	PCT HEAVY		MAIN ROUTE	'DIVER TED'			WITHOUT WORK ZONE	WITH WORK ZONE	
MID-1 AM	697	0.0	3000	697	0	0.36	0	69.9	63.7	49.7
1-2 AM	466	0.0	3000	466	0	0.36	0	70.2	63.9	49.7
2-3 AM	447	0.0	3000	447	0	0.36	0	70.2	63.9	49.7
3-4 AM	550	0.0	3000	550	0	0.36	0	70.0	63.8	49.7
4-5 AM	1098	0.0	3000	1098	0	0.35	0	69.4	63.4	49.7
5-6 AM	2442	0.0	OFF	2442	0	0.00	0	67.7	67.7	67.7
6-7 AM	4157	0.0	OFF	4157	0	0.00	0	62.5	62.5	62.5
7-8 AM	5075	0.0	OFF	5075	0	0.00	0	56.2	56.2	56.2
8-9 AM	4202	0.0	OFF	4202	0	0.00	0	62.2	62.2	62.2
9-10 AM	3727	0.0	OFF	3727	0	0.00	0	65.4	65.4	65.4
10-11 AM	3751	0.0	OFF	3751	0	0.00	0	65.2	65.2	65.2
11AM-NOON	3980	0.0	OFF	3980	0	0.00	0	63.7	63.7	63.7
NOON-1PM	4357	0.0	OFF	4357	0	0.00	0	61.1	61.1	61.1
1-2 PM	4418	0.0	OFF	4418	0	0.00	0	60.7	60.7	60.7
2-3 PM	4937	0.0	OFF	4937	0	0.00	0	57.1	57.1	57.1
3-4 PM	5244	0.0	OFF	5244	0	0.00	0	55.0	55.0	55.0
4-5 PM	5388	0.0	OFF	5388	0	0.00	0	54.0	54.0	54.0
5-6 PM	5328	0.0	OFF	5328	0	0.00	0	54.5	54.5	54.5
6-7 PM	4383	0.0	OFF	4383	0	0.00	0	60.9	60.9	60.9
7-8 PM	3365	0.0	2999	3365	0	4.56	229	66.6	30.6	37.3
8-9 PM	2880	0.0	2999	2880	0	6.63	327	67.1	24.6	37.3
9-10 PM	2668	0.0	2999	2668	0	2.28	114	67.4	42.2	40.6
10-11 PM	2031	0.0	3000	2031	0	0.33	0	68.2	62.7	49.7
11PM-MID	1594	0.0	3000	1594	0	0.34	0	68.7	63.0	49.7

"OFF" INDICATES NO ROAD WORK (ALL LANES OPEN TO TRAFFIC)

----- SITE BREAKDOWN DELAYS -----	
BREAKDOWN DURATION (MINS)	0
RANGE OF QUEUE DELAY - MIN (VEH-H) MAX	0.0
AV BREAKDOWNS PER DAY	0.00
AV QUEUE DELAY/DAY (VEH-H)	0.0
AV TOTAL DELAY/DAY (VEH-H)	0.0

----- SITE ACCIDENT DELAYS -----	
BREAKDOWN DURATION (MINS)	0
RANGE OF QUEUE DELAY - MIN (VEH-H) MAX	0
AV BREAKDOWNS PER DAY	0
AV QUEUE DELAY/DAY (VEH-H)	0
AV TOTAL DELAY/DAY (VEH-H)	0

AVERAGE ACCIDENT NUMBERS (PIA/DAY)	
MAIN ROUTE WITHOUT WORKS	0.0528
MAIN ROUTE WITH WORKS	0.0518
'DIVERSION'	0.0000

PIA: Personal Injury Accidents

ECONOMIC IMPACT ON ROAD USERS	
ROAD USER COSTS PER DAY	\$10,598
CONGESTED HOURS PER DAY*	0

*Delays Exceeding User-Specified Maximum

IH 43/894: HALE INTERCHANGE TO STH 27 (MILWAUKEE COUNTY)
NIGHTTIME CLOSURE
NO DIVERSION ROUTE (MAX QUEUE METHOD)

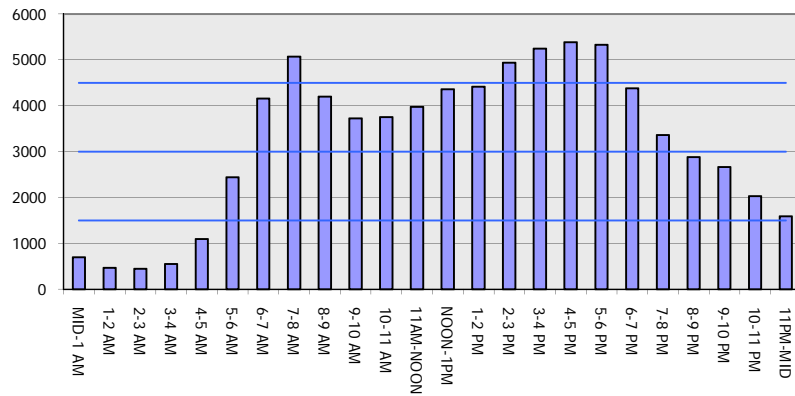
AUGUST

Analyzed for 2009
 Construction Season

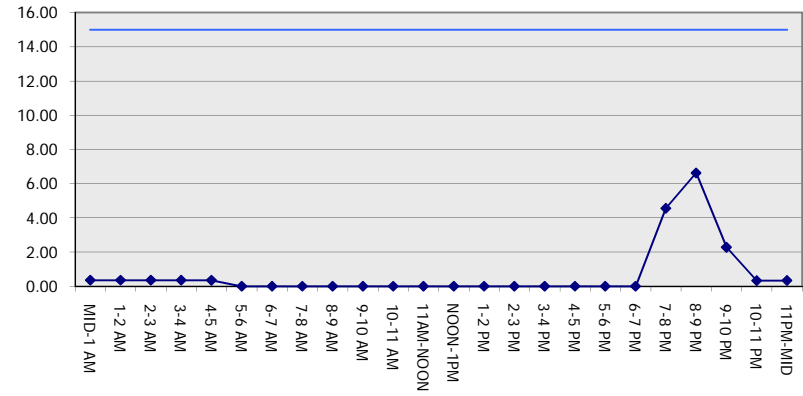
GRAPHICAL REPRESENTATION OF TRAFFIC MODEL INPUT AND OUTPUT

FRIDAY NORTHBOUND DIRECTION

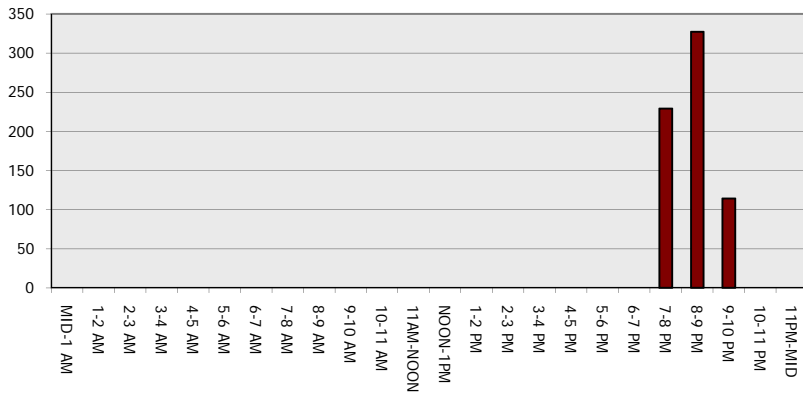
Main Route - Traffic Demand (Vehicles Per Hour)



Main Route Average Delay Per Vehicle (Minutes)



Main Route - Average Queue Length (Vehicles)



Main Route - Average Speed (MPH)

