

IH 43/894: HALE INTERCHANGE TO STH 27 (MILWAUKEE COUNTY) NIGHTTIME CLOSURE NO DIVERSION ROUTE (MAX QUEUE METHOD)	MAY
	Analyzed for 2009 Construction Season

SUMMARY OF TRAFFIC MODEL OUTPUT

SUNDAY SOUTHBOUND DIRECTION

TIME OF DAY	FLOWS AND CAPACITY IN VEH/HR						AVERAGE SPEEDS IN MPH			
	MAIN ROUTE		SITE CAPA CITY	FLOW		AV.DEL PER VEH (MINS)	AVERAGE QUEUE (VEH)	MAIN ROUTE		SITE
	DEMAND FLOW	PCT HEAVY		MAIN ROUTE	'DIVER TED'			WITHOUT WORK ZONE	WITH WORK ZONE	
MID-1 AM	951	0.0	3000	951	0	0.35	0	69.6	63.5	49.7
1-2 AM	530	0.0	3000	530	0	0.36	0	70.0	63.8	49.7
2-3 AM	430	0.0	3000	430	0	0.36	0	70.2	63.9	49.7
3-4 AM	276	0.0	3000	276	0	0.36	0	70.2	63.9	49.7
4-5 AM	275	0.0	3000	275	0	0.36	0	70.2	63.9	49.7
5-6 AM	485	0.0	3000	485	0	0.36	0	70.1	63.9	49.7
6-7 AM	841	0.0	3000	841	0	0.35	0	69.7	63.6	49.7
7-8 AM	1161	0.0	3000	1161	0	0.35	0	69.3	63.3	49.7
8-9 AM	1674	0.0	3000	1674	0	0.34	0	68.7	63.0	49.7
9-10 AM	2304	0.0	OFF	2304	0	0.00	0	67.9	67.9	67.9
10-11 AM	3085	0.0	OFF	3085	0	0.00	0	66.9	66.9	66.9
11AM-NOON	3571	0.0	OFF	3571	0	0.00	0	66.3	66.3	66.3
NOON-1PM	3865	0.0	OFF	3865	0	0.00	0	64.5	64.5	64.5
1-2 PM	3687	0.0	OFF	3687	0	0.00	0	65.6	65.6	65.6
2-3 PM	3585	0.0	OFF	3585	0	0.00	0	66.3	66.3	66.3
3-4 PM	3789	0.0	OFF	3789	0	0.00	0	65.0	65.0	65.0
4-5 PM	3727	0.0	OFF	3727	0	0.00	0	65.4	65.4	65.4
5-6 PM	3349	0.0	OFF	3349	0	0.00	0	66.6	66.6	66.6
6-7 PM	2946	0.0	OFF	2946	0	0.00	0	67.1	67.1	67.1
7-8 PM	2681	0.0	3000	2681	0	0.52	0	67.4	59.4	42.8
8-9 PM	2126	0.0	3000	2126	0	0.33	0	68.1	62.6	49.7
9-10 PM	1878	0.0	3000	1878	0	0.34	0	68.4	62.8	49.7
10-11 PM	1364	0.0	3000	1364	0	0.34	0	69.1	63.2	49.7
11PM-MID	873	0.0	3000	873	0	0.35	0	69.7	63.6	49.7

"OFF" INDICATES NO ROAD WORK (ALL LANES OPEN TO TRAFFIC)

----- SITE BREAKDOWN DELAYS -----	
BREAKDOWN DURATION (MINS)	0
RANGE OF QUEUE DELAY - MIN (VEH-H) MAX	0.0
AV BREAKDOWNS PER DAY	0.00
AV QUEUE DELAY/DAY (VEH-H)	0.0
AV TOTAL DELAY/DAY (VEH-H)	0.0

----- SITE ACCIDENT DELAYS -----	
BREAKDOWN DURATION (MINS)	0
RANGE OF QUEUE DELAY - MIN (VEH-H) MAX	0
AV BREAKDOWNS PER DAY	0
AV QUEUE DELAY/DAY (VEH-H)	0
AV TOTAL DELAY/DAY (VEH-H)	0

AVERAGE ACCIDENT NUMBERS (PIA/DAY)	
MAIN ROUTE WITHOUT WORKS	0.0338
MAIN ROUTE WITH WORKS	0.0328
'DIVERSION'	0.0000
PIA: Personal Injury Accidents	
IMPACTS ON ROAD USERS	
ROAD USER COSTS PER DAY	\$1,379
CONGESTED HOURS PER DAY*	0

*Delays Exceeding User-Specified Maximum

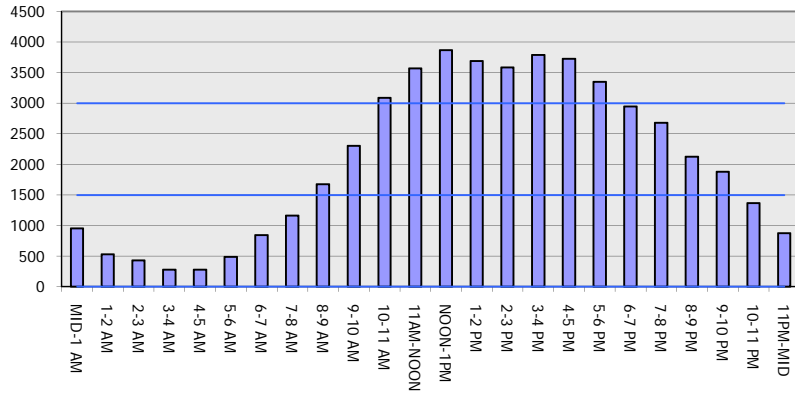
**IH 43/894: HALE INTERCHANGE TO STH 27 (MILWAUKEE COUNTY)
NIGHTTIME CLOSURE
NO DIVERSION ROUTE (MAX QUEUE METHOD)**

MAY
Analyzed for 2009
Construction Season

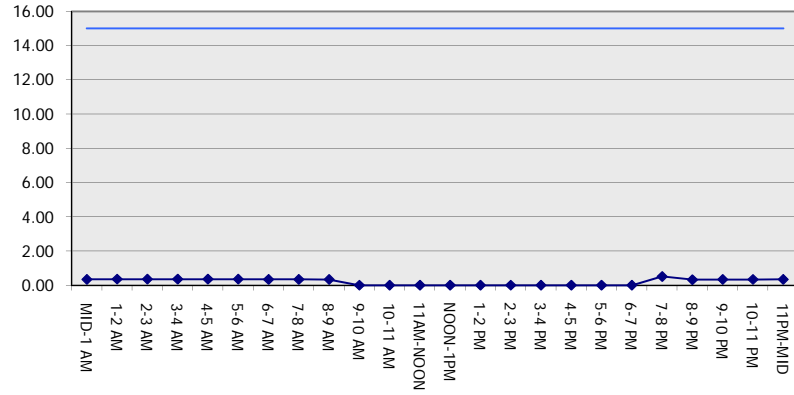
GRAPHICAL REPRESENTATION OF TRAFFIC MODEL INPUT AND OUTPUT

SUNDAY SOUTHBOUND DIRECTION

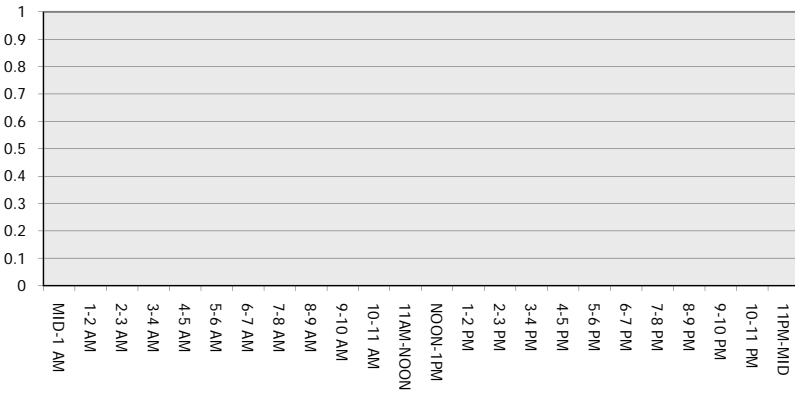
Main Route - Traffic Demand (Vehicles Per Hour)



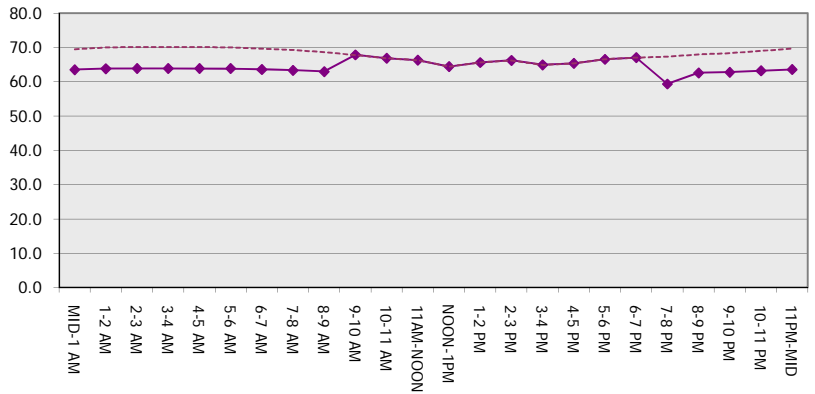
Main Route Average Delay Per Vehicle (Minutes)



Main Route - Average Queue Length (Vehicles)



Main Route - Average Speed (MPH)



IH 43/894: HALE INTERCHANGE TO STH 27 (MILWAUKEE COUNTY) NIGHTTIME CLOSURE NO DIVERSION ROUTE (MAX QUEUE METHOD)	MAY
	Analyzed for 2009 Construction Season

SUMMARY OF TRAFFIC MODEL OUTPUT

SUNDAY NORTHBOUND DIRECTION

TIME OF DAY	FLOWS AND CAPACITY IN VEH/HR							AVERAGE SPEEDS IN MPH		
	MAIN ROUTE		SITE CAPA CITY	FLOW		AV.DEL PER VEH (MINS)	AVERAGE QUEUE (VEH)	MAIN ROUTE		SITE
	DEMAND FLOW	PCT HEAVY		MAIN ROUTE	'DIVER TED'			WITHOUT WORK ZONE	WITH WORK ZONE	
MID-1 AM	741	0.0	3000	741	0	0.35	0	69.8	63.7	49.7
1-2 AM	451	0.0	3000	451	0	0.36	0	70.2	63.9	49.7
2-3 AM	364	0.0	3000	364	0	0.36	0	70.2	63.9	49.7
3-4 AM	299	0.0	3000	299	0	0.36	0	70.2	63.9	49.7
4-5 AM	338	0.0	3000	338	0	0.36	0	70.2	63.9	49.7
5-6 AM	605	0.0	3000	605	0	0.36	0	70.0	63.8	49.7
6-7 AM	816	0.0	3000	816	0	0.35	0	69.7	63.7	49.7
7-8 AM	1129	0.0	3000	1129	0	0.35	0	69.3	63.4	49.7
8-9 AM	1504	0.0	3000	1504	0	0.34	0	68.9	63.1	49.7
9-10 AM	2304	0.0	OFF	2304	0	0.00	0	67.9	67.9	67.9
10-11 AM	2962	0.0	OFF	2962	0	0.00	0	67.1	67.1	67.1
11AM-NOON	3469	0.0	OFF	3469	0	0.00	0	66.4	66.4	66.4
NOON-1PM	4065	0.0	OFF	4065	0	0.00	0	63.1	63.1	63.1
1-2 PM	4114	0.0	OFF	4114	0	0.00	0	62.7	62.7	62.7
2-3 PM	4104	0.0	OFF	4104	0	0.00	0	62.8	62.8	62.8
3-4 PM	4127	0.0	OFF	4127	0	0.00	0	62.7	62.7	62.7
4-5 PM	4223	0.0	OFF	4223	0	0.00	0	62.0	62.0	62.0
5-6 PM	3846	0.0	OFF	3846	0	0.00	0	64.6	64.6	64.6
6-7 PM	3499	0.0	OFF	3499	0	0.00	0	66.4	66.4	66.4
7-8 PM	3038	0.0	2999	3038	0	1.63	50	66.9	47.1	37.3
8-9 PM	2502	0.0	3000	2502	0	0.45	2	67.6	60.5	46.5
9-10 PM	1878	0.0	3000	1878	0	0.34	0	68.4	62.8	49.7
10-11 PM	1312	0.0	3000	1312	0	0.35	0	69.1	63.2	49.7
11PM-MID	831	0.0	3000	831	0	0.35	0	69.7	63.7	49.7

"OFF" INDICATES NO ROAD WORK (ALL LANES OPEN TO TRAFFIC)

----- SITE BREAKDOWN DELAYS -----	
BREAKDOWN DURATION (MINS)	0
RANGE OF QUEUE DELAY - MIN (VEH-H) MAX	0.0
AV BREAKDOWNS PER DAY	0.00
AV QUEUE DELAY/DAY (VEH-H)	0.0
AV TOTAL DELAY/DAY (VEH-H)	0.0

----- SITE ACCIDENT DELAYS -----	
BREAKDOWN DURATION (MINS)	0
RANGE OF QUEUE DELAY - MIN (VEH-H) MAX	0
AV BREAKDOWNS PER DAY	0
AV QUEUE DELAY/DAY (VEH-H)	0
AV TOTAL DELAY/DAY (VEH-H)	0

AVERAGE ACCIDENT NUMBERS (PIA/DAY)	
MAIN ROUTE WITHOUT WORKS	0.0359
MAIN ROUTE WITH WORKS	0.0349
'DIVERSION'	0.0000

PIA: Personal Injury Accidents

ECONOMIC IMPACT ON ROAD USERS	
ROAD USER COSTS PER DAY	\$2,286
CONGESTED HOURS PER DAY*	0

*Delays Exceeding User-Specified Maximum

**IH 43/894: HALE INTERCHANGE TO STH 27 (MILWAUKEE COUNTY)
NIGHTTIME CLOSURE
NO DIVERSION ROUTE (MAX QUEUE METHOD)**

MAY
Analyzed for 2009
Construction Season

GRAPHICAL REPRESENTATION OF TRAFFIC MODEL INPUT AND OUTPUT
SUNDAY NORTHBOUND DIRECTION

