

IH 43/894: HALE INTERCHANGE TO STH 27 (MILWAUKEE COUNTY) NIGHTTIME CLOSURE NO DIVERSION ROUTE (MAX QUEUE METHOD)	MAY
	Analyzed for 2009 Construction Season

SUMMARY OF TRAFFIC MODEL OUTPUT

SATURDAY SOUTHBOUND DIRECTION

TIME OF DAY	FLOWS AND CAPACITY IN VEH/HR						AVERAGE SPEEDS IN MPH				
	MAIN ROUTE		SITE CAPA CITY	FLOW		AV.DEL PER VEH (MINS)	AVERAGE QUEUE (VEH)	MAIN ROUTE		SITE	
	DEMAND FLOW	PCT HEAVY		MAIN ROUTE	'DIVER TED'			WITHOUT WORK ZONE	WITH WORK ZONE		
MID-1 AM	957	0.0	3000	957	0	0.35	0	69.6	63.5	49.7	
1-2 AM	632	0.0	3000	632	0	0.36	0	69.9	63.8	49.7	
2-3 AM	515	0.0	3000	515	0	0.36	0	70.1	63.9	49.7	
3-4 AM	440	0.0	3000	440	0	0.36	0	70.2	63.9	49.7	
4-5 AM	549	0.0	3000	549	0	0.36	0	70.0	63.8	49.7	
5-6 AM	969	0.0	3000	969	0	0.35	0	69.6	63.5	49.7	
6-7 AM	1616	0.0	3000	1616	0	0.34	0	68.7	63.0	49.7	
7-8 AM	2373	0.0	2999	2373	0	0.38	0	67.8	61.6	47.7	
8-9 AM	2992	0.0	OFF	2992	0	0.00	0	67.0	67.0	67.0	
9-10 AM	3334	0.0	OFF	3334	0	0.00	0	66.6	66.6	66.6	
10-11 AM	3679	0.0	OFF	3679	0	0.00	0	65.7	65.7	65.7	
11AM-NOON	3890	0.0	OFF	3890	0	0.00	0	64.3	64.3	64.3	
NOON-1PM	3892	0.0	OFF	3892	0	0.00	0	64.3	64.3	64.3	
1-2 PM	3722	0.0	OFF	3722	0	0.00	0	65.5	65.5	65.5	
2-3 PM	3906	0.0	OFF	3906	0	0.00	0	64.1	64.1	64.1	
3-4 PM	3826	0.0	OFF	3826	0	0.00	0	64.7	64.7	64.7	
4-5 PM	3690	0.0	OFF	3690	0	0.00	0	65.6	65.6	65.6	
5-6 PM	3268	0.0	OFF	3268	0	0.00	0	66.7	66.7	66.7	
6-7 PM	2879	0.0	2999	2879	0	0.65	0	67.1	57.4	39.3	
7-8 PM	2300	0.0	3000	2300	0	0.33	0	67.9	62.5	49.7	
8-9 PM	2046	0.0	3000	2046	0	0.33	0	68.2	62.7	49.7	
9-10 PM	1997	0.0	3000	1997	0	0.33	0	68.2	62.7	49.7	
10-11 PM	1619	0.0	3000	1619	0	0.34	0	68.7	63.0	49.7	
11PM-MID	1195	0.0	3000	1195	0	0.35	0	69.2	63.3	49.7	

"OFF" INDICATES NO ROAD WORK (ALL LANES OPEN TO TRAFFIC)

----- SITE BREAKDOWN DELAYS -----	
BREAKDOWN DURATION (MINS)	0
RANGE OF QUEUE DELAY - MIN (VEH-H) MAX	0.0
AV BREAKDOWNS PER DAY	0.00
AV QUEUE DELAY/DAY (VEH-H)	0.0
AV TOTAL DELAY/DAY (VEH-H)	0.0

----- SITE ACCIDENT DELAYS -----	
BREAKDOWN DURATION (MINS)	0
RANGE OF QUEUE DELAY - MIN (VEH-H) MAX	0
AV BREAKDOWNS PER DAY	0
AV QUEUE DELAY/DAY (VEH-H)	0
AV TOTAL DELAY/DAY (VEH-H)	0

AVERAGE ACCIDENT NUMBERS (PIA/DAY)	
MAIN ROUTE WITHOUT WORKS	0.0385
MAIN ROUTE WITH WORKS	0.0372
'DIVERSION'	0.0000
PIA: Personal Injury Accidents	
IMPACTS ON ROAD USERS	
ROAD USER COSTS PER DAY	\$1,968
CONGESTED HOURS PER DAY*	0

*Delays Exceeding User-Specified Maximum

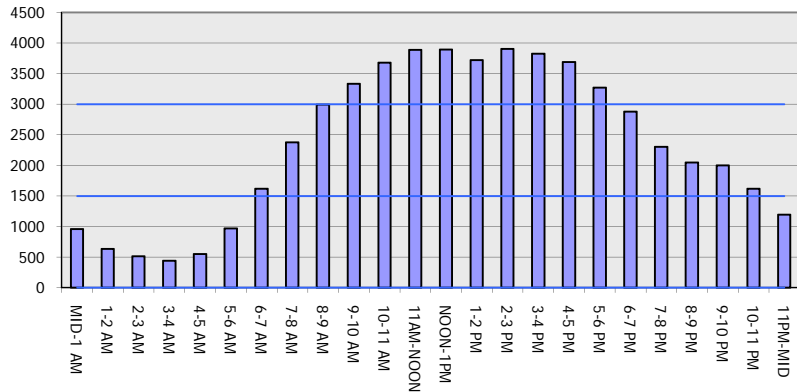
IH 43/894: HALE INTERCHANGE TO STH 27 (MILWAUKEE COUNTY)
NIGHTTIME CLOSURE
NO DIVERSION ROUTE (MAX QUEUE METHOD)

MAY
 Analyzed for 2009
 Construction Season

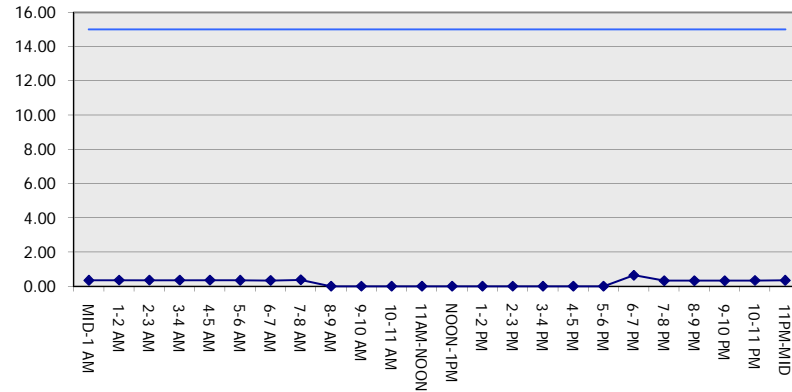
GRAPHICAL REPRESENTATION OF TRAFFIC MODEL INPUT AND OUTPUT

SATURDAY SOUTHBOUND DIRECTION

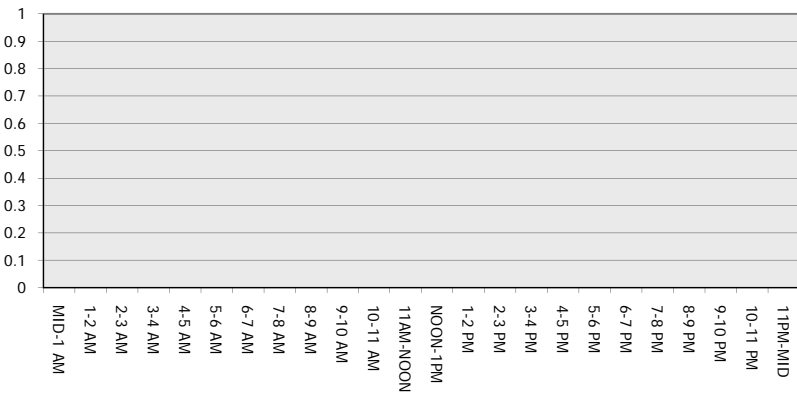
Main Route - Traffic Demand (Vehicles Per Hour)



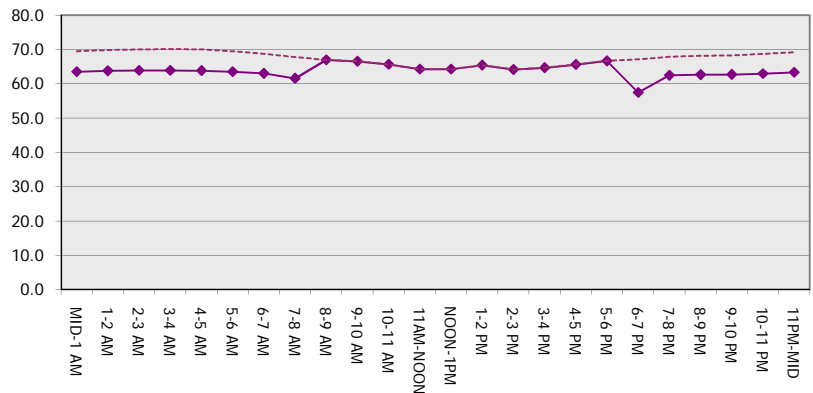
Main Route Average Delay Per Vehicle (Minutes)



Main Route - Average Queue Length (Vehicles)



Main Route - Average Speed (MPH)



IH 43/894: HALE INTERCHANGE TO STH 27 (MILWAUKEE COUNTY) NIGHTTIME CLOSURE NO DIVERSION ROUTE (MAX QUEUE METHOD)	MAY
	Analyzed for 2009 Construction Season

SUMMARY OF TRAFFIC MODEL OUTPUT

SATURDAY NORTHBOUND DIRECTION

TIME OF DAY	FLOWS AND CAPACITY IN VEH/HR						AVERAGE SPEEDS IN MPH			
	MAIN ROUTE		SITE CAPA CITY	FLOW		AV.DEL PER VEH (MINS)	AVERAGE QUEUE (VEH)	MAIN ROUTE		SITE
	DEMAND FLOW	PCT HEAVY		MAIN ROUTE	'DIVER TED'			WITHOUT WORK ZONE	WITH WORK ZONE	
MID-1 AM	787	0.0	3000	787	0	0.35	0	69.7	63.7	49.7
1-2 AM	483	0.0	3000	483	0	0.36	0	70.1	63.9	49.7
2-3 AM	437	0.0	3000	437	0	0.36	0	70.2	63.9	49.7
3-4 AM	394	0.0	3000	394	0	0.36	0	70.2	63.9	49.7
4-5 AM	591	0.0	3000	591	0	0.36	0	70.0	63.8	49.7
5-6 AM	1166	0.0	3000	1166	0	0.35	0	69.3	63.3	49.7
6-7 AM	1424	0.0	3000	1424	0	0.34	0	69.0	63.2	49.7
7-8 AM	1873	0.0	3000	1873	0	0.34	0	68.4	62.8	49.7
8-9 AM	2447	0.0	OFF	2447	0	0.00	0	67.7	67.7	67.7
9-10 AM	2907	0.0	OFF	2907	0	0.00	0	67.1	67.1	67.1
10-11 AM	3318	0.0	OFF	3318	0	0.00	0	66.6	66.6	66.6
11AM-NOON	3593	0.0	OFF	3593	0	0.00	0	66.3	66.3	66.3
NOON-1PM	3856	0.0	OFF	3856	0	0.00	0	64.5	64.5	64.5
1-2 PM	3757	0.0	OFF	3757	0	0.00	0	65.2	65.2	65.2
2-3 PM	3875	0.0	OFF	3875	0	0.00	0	64.4	64.4	64.4
3-4 PM	3873	0.0	OFF	3873	0	0.00	0	64.4	64.4	64.4
4-5 PM	3854	0.0	OFF	3854	0	0.00	0	64.5	64.5	64.5
5-6 PM	3668	0.0	OFF	3668	0	0.00	0	65.8	65.8	65.8
6-7 PM	3192	0.0	2999	3192	0	2.97	129	66.8	37.8	37.3
7-8 PM	2589	0.0	2999	2589	0	1.34	59	67.5	50.0	43.2
8-9 PM	2356	0.0	3000	2356	0	0.33	0	67.8	62.4	49.7
9-10 PM	2226	0.0	3000	2226	0	0.33	0	67.9	62.5	49.7
10-11 PM	1642	0.0	3000	1642	0	0.34	0	68.7	63.0	49.7
11PM-MID	1191	0.0	3000	1191	0	0.35	0	69.2	63.3	49.7

"OFF" INDICATES NO ROAD WORK (ALL LANES OPEN TO TRAFFIC)

----- SITE BREAKDOWN DELAYS -----	
BREAKDOWN DURATION (MINS)	0
RANGE OF QUEUE DELAY - MIN	0.0
(VEH-H) MAX	0.0
AV BREAKDOWNS PER DAY	0.00
AV QUEUE DELAY/DAY (VEH-H)	0.0
AV TOTAL DELAY/DAY (VEH-H)	0.0

----- SITE ACCIDENT DELAYS -----	
BREAKDOWN DURATION (MINS)	0
RANGE OF QUEUE DELAY - MIN	0
(VEH-H) MAX	0
AV BREAKDOWNS PER DAY	0
AV QUEUE DELAY/DAY (VEH-H)	0
AV TOTAL DELAY/DAY (VEH-H)	0

AVERAGE ACCIDENT NUMBERS (PIA/DAY)	
MAIN ROUTE WITHOUT WORKS	0.0380
MAIN ROUTE WITH WORKS	0.0366
'DIVERSION'	0.0000

PIA: Personal Injury Accidents

ECONOMIC IMPACT ON ROAD USERS	
ROAD USER COSTS PER DAY	\$4,508
CONGESTED HOURS PER DAY*	0

*Delays Exceeding User-Specified Maximum

IH 43/894: HALE INTERCHANGE TO STH 27 (MILWAUKEE COUNTY)
NIGHTTIME CLOSURE
NO DIVERSION ROUTE (MAX QUEUE METHOD)

MAY
 Analyzed for 2009
 Construction Season

GRAPHICAL REPRESENTATION OF TRAFFIC MODEL INPUT AND OUTPUT
SATURDAY NORTHBOUND DIRECTION

