

IH 894: STH 59 TO HALE INTERCHANGE (MILWAUKEE COUNTY) NIGHTTIME CLOSURE NO DIVERSION ROUTE (MAX QUEUE METHOD)	OCTOBER
	Analyzed for 2009 Construction Season

SUMMARY OF TRAFFIC MODEL OUTPUT

SUNDAY WESTBOUND DIRECTION

TIME OF DAY	FLOWS AND CAPACITY IN VEH/HR						AVERAGE SPEEDS IN MPH			
	MAIN ROUTE		SITE CAPA CITY	FLOW		AV.DEL PER VEH (MINS)	AVERAGE QUEUE (VEH)	MAIN ROUTE		SITE
	DEMAND FLOW	PCT HEAVY		MAIN ROUTE	'DIVER TED'			WITHOUT WORK ZONE	WITH WORK ZONE	
MID-1 AM	1143	0.0	3000	1143	0	0.35	0	69.3	62.2	49.7
1-2 AM	594	0.0	3000	594	0	0.36	0	70.0	62.5	49.7
2-3 AM	514	0.0	3000	514	0	0.36	0	70.1	62.6	49.7
3-4 AM	341	0.0	3000	341	0	0.36	0	70.2	62.7	49.7
4-5 AM	357	0.0	3000	357	0	0.36	0	70.2	62.7	49.7
5-6 AM	658	0.0	3000	658	0	0.36	0	69.9	62.5	49.7
6-7 AM	1164	0.0	3000	1164	0	0.35	0	69.3	62.2	49.7
7-8 AM	1494	0.0	3000	1494	0	0.34	0	68.9	61.9	49.7
8-9 AM	2127	0.0	2999	2127	0	0.33	0	68.1	61.5	49.7
9-10 AM	3018	0.0	OFF	3018	0	0.00	0	67.0	67.0	67.0
10-11 AM	3836	0.0	OFF	3836	0	0.00	0	64.6	64.6	64.6
11AM-NOON	4246	0.0	OFF	4246	0	0.00	0	61.9	61.9	61.9
NOON-1PM	4645	0.0	OFF	4645	0	0.00	0	59.1	59.1	59.1
1-2 PM	4419	0.0	OFF	4419	0	0.00	0	60.7	60.7	60.7
2-3 PM	4304	0.0	OFF	4304	0	0.00	0	61.5	61.5	61.5
3-4 PM	4498	0.0	OFF	4498	0	0.00	0	60.1	60.1	60.1
4-5 PM	4447	0.0	OFF	4447	0	0.00	0	60.5	60.5	60.5
5-6 PM	4101	0.0	OFF	4101	0	0.00	0	62.8	62.8	62.8
6-7 PM	3965	0.0	OFF	3965	0	0.00	0	63.8	63.8	63.8
7-8 PM	3238	0.0	2999	3238	0	3.61	168	66.7	31.1	37.3
8-9 PM	2382	0.0	2999	2382	0	1.21	60	67.8	48.7	45.7
9-10 PM	2032	0.0	3000	2032	0	0.33	0	68.2	61.5	49.7
10-11 PM	1598	0.0	3000	1598	0	0.34	0	68.7	61.9	49.7
11PM-MID	972	0.0	3000	972	0	0.35	0	69.6	62.3	49.7

"OFF" INDICATES NO ROAD WORK (ALL LANES OPEN TO TRAFFIC)

BREAKDOWN DURATION (MINS)	0
RANGE OF QUEUE DELAY - MIN (VEH-H) MAX	0.0
AV BREAKDOWNS PER DAY	0.00
AV QUEUE DELAY/DAY (VEH-H)	0.0
AV TOTAL DELAY/DAY (VEH-H)	0.0

BREAKDOWN DURATION (MINS)	0
RANGE OF QUEUE DELAY - MIN (VEH-H) MAX	0
AV BREAKDOWNS PER DAY	0
AV QUEUE DELAY/DAY (VEH-H)	0
AV TOTAL DELAY/DAY (VEH-H)	0

MAIN ROUTE WITHOUT WORKS	0.0335
MAIN ROUTE WITH WORKS	0.0322
'DIVERSION'	0.0000
PIA: Personal Injury Accidents	
IMPACTS ON ROAD USERS	
ROAD USER COSTS PER DAY	\$5,307
CONGESTED HOURS PER DAY*	0

*Delays Exceeding User-Specified Maximum

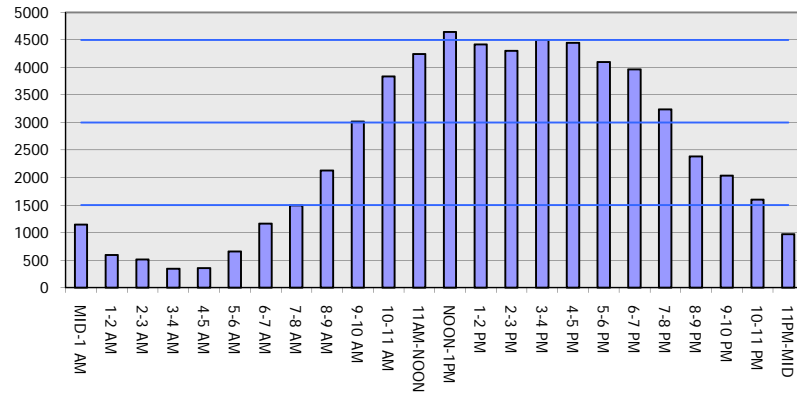
IH 894: STH 59 TO HALE INTERCHANGE (MILWAUKEE COUNTY)
NIGHTTIME CLOSURE
NO DIVERSION ROUTE (MAX QUEUE METHOD)

OCTOBER

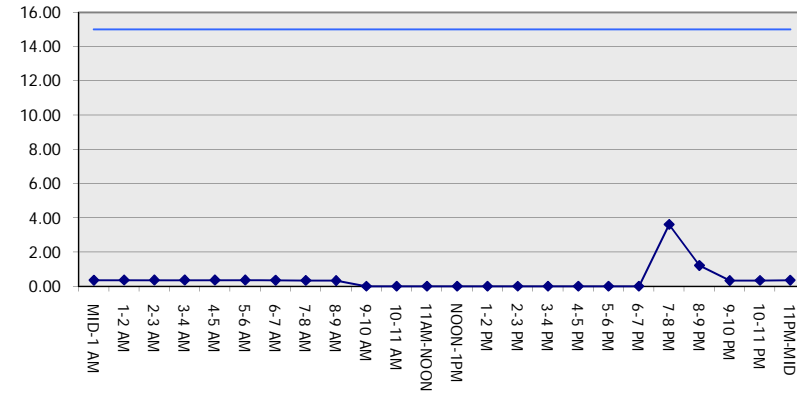
Analyzed for 2009
 Construction Season

GRAPHICAL REPRESENTATION OF TRAFFIC MODEL INPUT AND OUTPUT
SUNDAY WESTBOUND DIRECTION

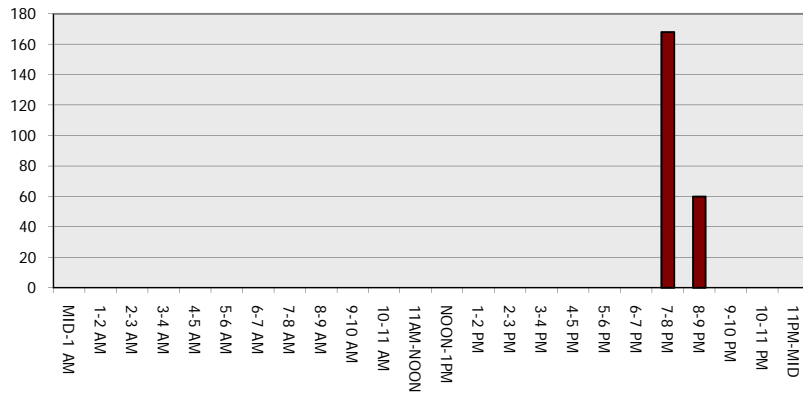
Main Route - Traffic Demand (Vehicles Per Hour)



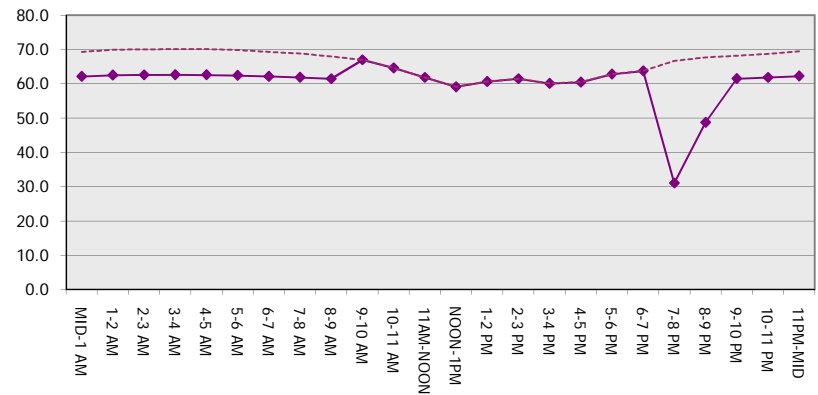
Main Route Average Delay Per Vehicle (Minutes)



Main Route - Average Queue Length (Vehicles)



Main Route - Average Speed (MPH)



IH 894: STH 59 TO HALE INTERCHANGE (MILWAUKEE COUNTY) NIGHTTIME CLOSURE NO DIVERSION ROUTE (MAX QUEUE METHOD)	OCTOBER
	Analyzed for 2009 Construction Season

SUMMARY OF TRAFFIC MODEL OUTPUT

SUNDAY EASTBOUND DIRECTION

TIME OF DAY	FLOWS AND CAPACITY IN VEH/HR						AVERAGE SPEEDS IN MPH			
	MAIN ROUTE		SITE CAPA CITY	FLOW		AV.DEL PER VEH (MINS)	AVERAGE QUEUE (VEH)	MAIN ROUTE		SITE
	DEMAND FLOW	PCT HEAVY		MAIN ROUTE	'DIVER TED'			WITHOUT WORK ZONE	WITH WORK ZONE	
MID-1 AM	1127	0.0	3000	1127	0	0.35	0	69.3	62.2	49.7
1-2 AM	723	0.0	3000	723	0	0.35	0	69.9	62.5	49.7
2-3 AM	641	0.0	3000	641	0	0.36	0	69.9	62.5	49.7
3-4 AM	400	0.0	3000	400	0	0.36	0	70.2	62.7	49.7
4-5 AM	410	0.0	3000	410	0	0.36	0	70.2	62.7	49.7
5-6 AM	647	0.0	3000	647	0	0.36	0	69.9	62.5	49.7
6-7 AM	873	0.0	3000	873	0	0.35	0	69.7	62.3	49.7
7-8 AM	1389	0.0	3000	1389	0	0.34	0	69.0	62.0	49.7
8-9 AM	1895	0.0	3000	1895	0	0.34	0	68.4	61.6	49.7
9-10 AM	2762	0.0	OFF	2762	0	0.00	0	67.3	67.3	67.3
10-11 AM	3613	0.0	OFF	3613	0	0.00	0	66.2	66.2	66.2
11AM-NOON	4421	0.0	OFF	4421	0	0.00	0	60.7	60.7	60.7
NOON-1PM	4959	0.0	OFF	4959	0	0.00	0	57.0	57.0	57.0
1-2 PM	4866	0.0	OFF	4866	0	0.00	0	57.6	57.6	57.6
2-3 PM	5048	0.0	OFF	5048	0	0.00	0	56.4	56.4	56.4
3-4 PM	5333	0.0	OFF	5333	0	0.00	0	54.4	54.4	54.4
4-5 PM	5019	0.0	OFF	5019	0	0.00	0	56.6	56.6	56.6
5-6 PM	4186	0.0	OFF	4186	0	0.00	0	62.3	62.3	62.3
6-7 PM	3967	0.0	OFF	3967	0	0.00	0	63.8	63.8	63.8
7-8 PM	3335	0.0	2999	3335	0	4.33	215	66.6	28.1	37.3
8-9 PM	2430	0.0	2999	2430	0	2.10	134	67.7	40.4	44.0
9-10 PM	1793	0.0	3000	1793	0	0.34	0	68.5	61.7	49.7
10-11 PM	1238	0.0	3000	1238	0	0.35	0	69.2	62.1	49.7
11PM-MID	953	0.0	3000	953	0	0.35	0	69.6	62.3	49.7

"OFF" INDICATES NO ROAD WORK (ALL LANES OPEN TO TRAFFIC)

----- SITE BREAKDOWN DELAYS -----	
BREAKDOWN DURATION (MINS)	0
RANGE OF QUEUE DELAY - MIN (VEH-H) MAX	0.0
AV BREAKDOWNS PER DAY	0.00
AV QUEUE DELAY/DAY (VEH-H)	0.0
AV TOTAL DELAY/DAY (VEH-H)	0.0

----- SITE ACCIDENT DELAYS -----	
BREAKDOWN DURATION (MINS)	0
RANGE OF QUEUE DELAY - MIN (VEH-H) MAX	0
AV BREAKDOWNS PER DAY	0
AV QUEUE DELAY/DAY (VEH-H)	0
AV TOTAL DELAY/DAY (VEH-H)	0

AVERAGE ACCIDENT NUMBERS (PIA/DAY)	
MAIN ROUTE WITHOUT WORKS	0.0345
MAIN ROUTE WITH WORKS	0.0334
'DIVERSION'	0.0000

PIA: Personal Injury Accidents

ECONOMIC IMPACT ON ROAD USERS	
ROAD USER COSTS PER DAY	\$6,622
CONGESTED HOURS PER DAY*	0

*Delays Exceeding User-Specified Maximum

**IH 894: STH 59 TO HALE INTERCHANGE (MILWAUKEE COUNTY)
 NIGHTTIME CLOSURE
 NO DIVERSION ROUTE (MAX QUEUE METHOD)**

OCTOBER

Analyzed for 2009
 Construction Season

GRAPHICAL REPRESENTATION OF TRAFFIC MODEL INPUT AND OUTPUT

SUNDAY EASTBOUND DIRECTION

