

IH 94: CTH Y/LAYTON AVE TO CTH ZZ/COLLEGE AVE (MILWAUKEE COUNTY) NIGHTTIME CLOSURE NO DIVERSION ROUTE (MAX QUEUE METHOD)	OCTOBER
	Analyzed for 2009 Construction Season

SUMMARY OF TRAFFIC MODEL OUTPUT

SUNDAY WESTBOUND DIRECTION

TIME OF DAY	FLOWS AND CAPACITY IN VEH/HR						AVERAGE SPEEDS IN MPH			
	MAIN ROUTE		SITE CAPA CITY	FLOW		AV.DEL PER VEH (MINS)	AVERAGE QUEUE (VEH)	MAIN ROUTE		SITE
	DEMAND FLOW	PCT HEAVY		MAIN ROUTE	'DIVER TED'			WITHOUT WORK ZONE	WITH WORK ZONE	
MID-1 AM	1339	0.0	3000	1339	0	0.36	0	70.2	58.0	49.7
1-2 AM	736	0.0	3000	736	0	0.36	0	70.2	58.0	49.7
2-3 AM	617	0.0	3000	617	0	0.36	0	70.2	58.0	49.7
3-4 AM	411	0.0	3000	411	0	0.36	0	70.2	58.0	49.7
4-5 AM	444	0.0	3000	444	0	0.36	0	70.2	58.0	49.7
5-6 AM	651	0.0	3000	651	0	0.36	0	70.2	58.0	49.7
6-7 AM	1160	0.0	3000	1160	0	0.36	0	70.2	58.0	49.7
7-8 AM	1482	0.0	3000	1482	0	0.36	0	70.2	58.0	49.7
8-9 AM	2066	0.0	2999	2066	0	0.35	0	69.5	57.8	49.7
9-10 AM	2835	0.0	OFF	2835	0	0.00	0	68.5	68.5	68.5
10-11 AM	3672	0.0	OFF	3672	0	0.00	0	67.1	67.1	67.1
11AM-NOON	4276	0.0	OFF	4276	0	0.00	0	63.0	63.0	63.0
NOON-1PM	4629	0.0	OFF	4629	0	0.00	0	60.5	60.5	60.5
1-2 PM	4652	0.0	OFF	4652	0	0.00	0	60.4	60.4	60.4
2-3 PM	4606	0.0	OFF	4606	0	0.00	0	60.7	60.7	60.7
3-4 PM	4895	0.0	OFF	4895	0	0.00	0	58.7	58.7	58.7
4-5 PM	4872	0.0	OFF	4872	0	0.00	0	58.9	58.9	58.9
5-6 PM	4769	0.0	OFF	4769	0	0.00	0	59.6	59.6	59.6
6-7 PM	4268	0.0	OFF	4268	0	0.00	0	63.0	63.0	63.0
7-8 PM	3651	0.0	2999	3651	0	6.76	370	67.2	15.7	36.9
8-9 PM	2836	0.0	2999	2836	0	11.71	603	68.5	11.7	36.9
9-10 PM	2564	0.0	2999	2564	0	5.55	299	68.9	17.6	39.2
10-11 PM	1886	0.0	3000	1886	0	0.37	1	69.7	57.3	49.7
11PM-MID	1344	0.0	3000	1344	0	0.36	0	70.2	58.0	49.7

"OFF" INDICATES NO ROAD WORK (ALL LANES OPEN TO TRAFFIC)

----- SITE BREAKDOWN DELAYS -----	
BREAKDOWN DURATION (MINS)	0
RANGE OF QUEUE DELAY - MIN (VEH-H) MAX	0.0
AV BREAKDOWNS PER DAY	0.00
AV QUEUE DELAY/DAY (VEH-H)	0.0
AV TOTAL DELAY/DAY (VEH-H)	0.0

----- SITE ACCIDENT DELAYS -----	
BREAKDOWN DURATION (MINS)	0
RANGE OF QUEUE DELAY - MIN (VEH-H) MAX	0
AV BREAKDOWNS PER DAY	0
AV QUEUE DELAY/DAY (VEH-H)	0
AV TOTAL DELAY/DAY (VEH-H)	0

AVERAGE ACCIDENT NUMBERS (PIA/DAY)	
MAIN ROUTE WITHOUT WORKS	0.0206
MAIN ROUTE WITH WORKS	0.0192
'DIVERSION'	0.0000
PIA: Personal Injury Accidents	
IMPACTS ON ROAD USERS	
ROAD USER COSTS PER DAY	\$21,593
CONGESTED HOURS PER DAY*	0

*Delays Exceeding User-Specified Maximum

IH 94: CTH Y/LAYTON AVE TO CTH ZZ/COLLEGE AVE (MILWAUKEE COUNTY)
NIGHTTIME CLOSURE
NO DIVERSION ROUTE (MAX QUEUE METHOD)

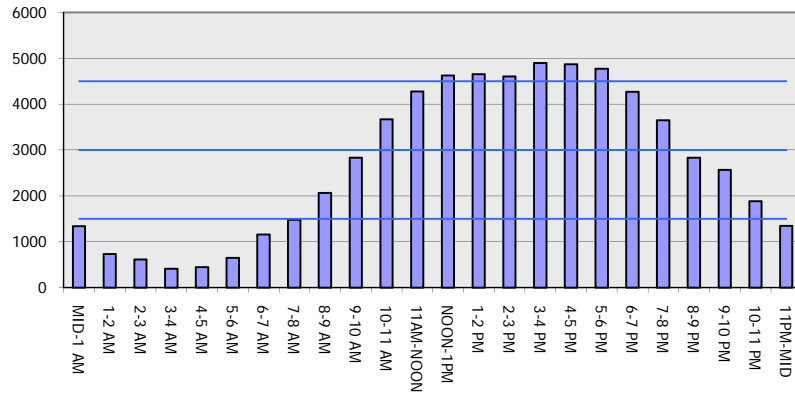
OCTOBER

Analyzed for 2009
 Construction Season

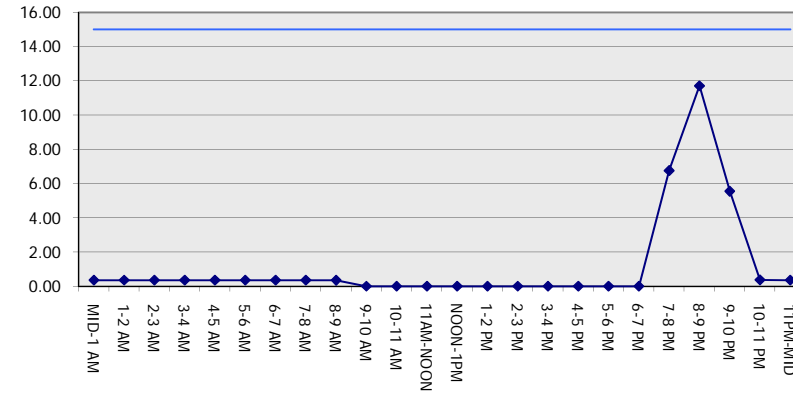
GRAPHICAL REPRESENTATION OF TRAFFIC MODEL INPUT AND OUTPUT

SUNDAY WESTBOUND DIRECTION

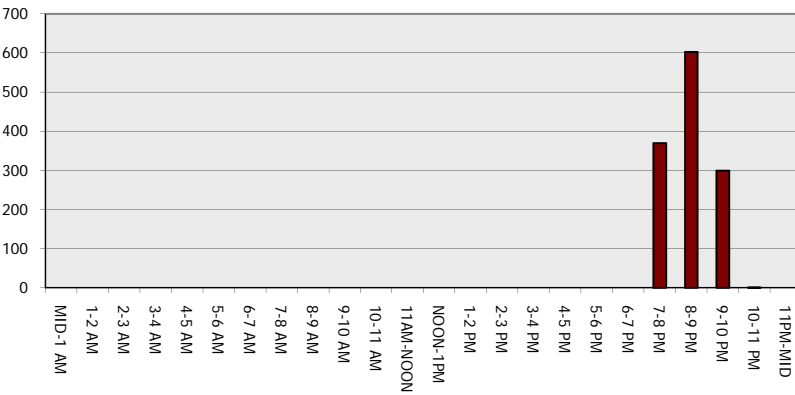
Main Route - Traffic Demand (Vehicles Per Hour)



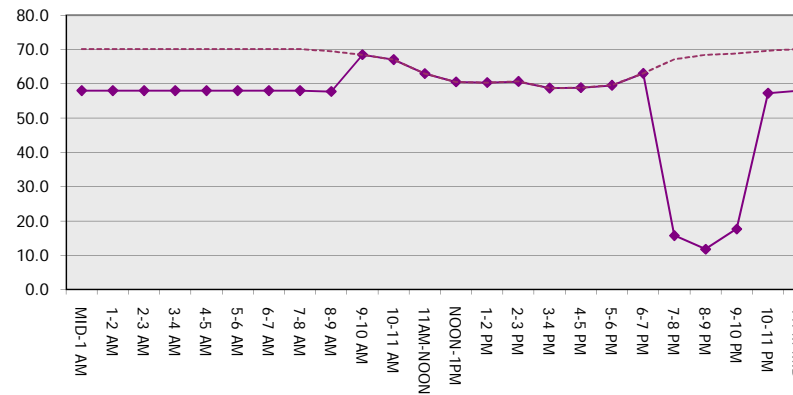
Main Route Average Delay Per Vehicle (Minutes)



Main Route - Average Queue Length (Vehicles)



Main Route - Average Speed (MPH)



IH 94: CTH Y/LAYTON AVE TO CTH ZZ/COLLEGE AVE (MILWAUKEE COUNTY) NIGHTTIME CLOSURE NO DIVERSION ROUTE (MAX QUEUE METHOD)	OCTOBER
	Analyzed for 2009 Construction Season

SUMMARY OF TRAFFIC MODEL OUTPUT

SUNDAY EASTBOUND DIRECTION

TIME OF DAY	FLOWS AND CAPACITY IN VEH/HR							AVERAGE SPEEDS IN MPH		
	MAIN ROUTE		SITE CAPA CITY	FLOW		AV.DEL PER VEH (MINS)	AVERAGE QUEUE (VEH)	MAIN ROUTE		SITE
	DEMAND FLOW	PCT HEAVY		MAIN ROUTE	'DIVER TED'			WITHOUT WORK ZONE	WITH WORK ZONE	
MID-1 AM	1333	0.0	3000	1333	0	0.36	0	70.2	58.0	49.7
1-2 AM	903	0.0	3000	903	0	0.36	0	70.2	58.0	49.7
2-3 AM	968	0.0	3000	968	0	0.36	0	70.2	58.0	49.7
3-4 AM	607	0.0	3000	607	0	0.36	0	70.2	58.0	49.7
4-5 AM	654	0.0	3000	654	0	0.36	0	70.2	58.0	49.7
5-6 AM	899	0.0	3000	899	0	0.36	0	70.2	58.0	49.7
6-7 AM	1335	0.0	3000	1335	0	0.36	0	70.2	58.0	49.7
7-8 AM	1692	0.0	3000	1692	0	0.36	0	69.9	57.9	49.7
8-9 AM	2283	0.0	2999	2283	0	0.39	0	69.2	56.4	48.0
9-10 AM	3392	0.0	OFF	3392	0	0.00	0	67.8	67.8	67.8
10-11 AM	4161	0.0	OFF	4161	0	0.00	0	63.7	63.7	63.7
11AM-NOON	4548	0.0	OFF	4548	0	0.00	0	61.1	61.1	61.1
NOON-1PM	5161	0.0	OFF	5161	0	0.00	0	56.9	56.9	56.9
1-2 PM	5397	0.0	OFF	5397	0	0.00	0	55.3	55.3	55.3
2-3 PM	5435	0.0	OFF	5435	0	0.00	0	55.0	55.0	55.0
3-4 PM	5591	0.0	OFF	5591	0	0.00	0	54.0	54.0	54.0
4-5 PM	5511	0.0	OFF	5511	0	0.00	0	54.5	54.5	54.5
5-6 PM	4908	0.0	OFF	4908	0	0.00	0	58.6	58.6	58.6
6-7 PM	4595	0.0	OFF	4595	0	0.00	0	60.8	60.8	60.8
7-8 PM	3848	0.0	2999	3848	0	8.54+	479	65.9	13.9	36.9
8-9 PM	2813	0.0	2999	2813	0	15.35+	803	68.6	10.5	36.9
9-10 PM	2282	0.0	2999	2282	0	4.87	341	69.2	20.2	42.6
10-11 PM	1637	0.0	3000	1637	0	0.36	0	70.0	57.9	49.7
11PM-MID	1258	0.0	3000	1258	0	0.36	0	70.2	58.0	49.7

"OFF" INDICATES NO ROAD WORK (ALL LANES OPEN TO TRAFFIC)

+ INDICATES QUEUEING EXCEEDS USER-SPECIFIED MAXIMUM LIMIT

BREAKDOWN DURATION (MINS)	0
RANGE OF QUEUE DELAY - MIN (VEH-H) MAX	0.0
AV BREAKDOWNS PER DAY	0.00
AV QUEUE DELAY/DAY (VEH-H)	0.0
AV TOTAL DELAY/DAY (VEH-H)	0.0

BREAKDOWN DURATION (MINS)	0
RANGE OF QUEUE DELAY - MIN (VEH-H) MAX	0
AV BREAKDOWNS PER DAY	0
AV QUEUE DELAY/DAY (VEH-H)	0
AV TOTAL DELAY/DAY (VEH-H)	0

MAIN ROUTE WITHOUT WORKS	0.0227
MAIN ROUTE WITH WORKS	0.0212
'DIVERSION'	0.0000

PIA: Personal Injury Accidents

ROAD USER COSTS PER DAY	\$26,003
CONGESTED HOURS PER DAY*	2

*Delays Exceeding User-Specified Maximum

IH 94: CTH Y/LAYTON AVE TO CTH ZZ/COLLEGE AVE (MILWAUKEE COUNTY)
NIGHTTIME CLOSURE
NO DIVERSION ROUTE (MAX QUEUE METHOD)

OCTOBER

Analyzed for 2009
 Construction Season

GRAPHICAL REPRESENTATION OF TRAFFIC MODEL INPUT AND OUTPUT

SUNDAY EASTBOUND DIRECTION

