

<b>IH 94: CTH Y/LAYTON AVE TO CTH ZZ/COLLEGE AVE (MILWAUKEE COUNTY)</b> <b>NIGHTTIME CLOSURE</b> <b>NO DIVERSION ROUTE (MAX QUEUE METHOD)</b>	<b>OCTOBER</b>
	Analyzed for 2009 Construction Season

**SUMMARY OF TRAFFIC MODEL OUTPUT**

SATURDAY WESTBOUND DIRECTION

TIME OF DAY	FLOWS AND CAPACITY IN VEH/HR						AVERAGE SPEEDS IN MPH			
	MAIN ROUTE		SITE CAPA CITY	FLOW		AV.DEL PER VEH (MINS)	AVERAGE QUEUE (VEH)	MAIN ROUTE		SITE
	DEMAND FLOW	PCT HEAVY		MAIN ROUTE	'DIVER TED'			WITHOUT WORK ZONE	WITH WORK ZONE	
MID-1 AM	1336	0.0	3000	1336	0	0.36	0	70.2	58.0	49.7
1-2 AM	752	0.0	3000	752	0	0.36	0	70.2	58.0	49.7
2-3 AM	664	0.0	3000	664	0	0.36	0	70.2	58.0	49.7
3-4 AM	607	0.0	3000	607	0	0.36	0	70.2	58.0	49.7
4-5 AM	760	0.0	3000	760	0	0.36	0	70.2	58.0	49.7
5-6 AM	1258	0.0	3000	1258	0	0.36	0	70.2	58.0	49.7
6-7 AM	1988	0.0	3000	1988	0	0.35	0	69.6	57.8	49.7
7-8 AM	2737	0.0	2999	2737	0	0.58	0	68.6	51.5	41.6
8-9 AM	3601	0.0	OFF	3601	0	0.00	0	67.6	67.6	67.6
9-10 AM	4067	0.0	OFF	4067	0	0.00	0	64.4	64.4	64.4
10-11 AM	4453	0.0	OFF	4453	0	0.00	0	61.7	61.7	61.7
11AM-NOON	4814	0.0	OFF	4814	0	0.00	0	59.3	59.3	59.3
NOON-1PM	4993	0.0	OFF	4993	0	0.00	0	58.1	58.1	58.1
1-2 PM	4791	0.0	OFF	4791	0	0.00	0	59.4	59.4	59.4
2-3 PM	4874	0.0	OFF	4874	0	0.00	0	58.9	58.9	58.9
3-4 PM	5022	0.0	OFF	5022	0	0.00	0	57.9	57.9	57.9
4-5 PM	4968	0.0	OFF	4968	0	0.00	0	58.2	58.2	58.2
5-6 PM	5041	0.0	OFF	5041	0	0.00	0	57.7	57.7	57.7
6-7 PM	4512	0.0	2999	3918	594	11.82+	664	61.4	11.8	36.9
7-8 PM	3665	0.0	3000	2985	679	16.85+	887	67.1	10.1	36.9
8-9 PM	2946	0.0	2999	2890	56	16.31+	855	68.4	10.2	36.9
9-10 PM	2810	0.0	3000	2810	0	13.67+	711	68.6	11.0	36.9
10-11 PM	2532	0.0	2999	2532	0	7.42	393	68.9	14.8	38.5
11PM-MID	2057	0.0	3000	2057	0	0.49	11	69.5	54.2	49.7

"OFF" INDICATES NO ROAD WORK (ALL LANES OPEN TO TRAFFIC)

+ INDICATES QUEUEING EXCEEDS USER-SPECIFIED MAXIMUM LIMIT

*----- SITE BREAKDOWN DELAYS -----*	
BREAKDOWN DURATION (MINS)	0
RANGE OF QUEUE DELAY - MIN (VEH-H) MAX	0.0
AV BREAKDOWNS PER DAY	0.00
AV QUEUE DELAY/DAY (VEH-H)	0.0
AV TOTAL DELAY/DAY (VEH-H)	0.0

*----- SITE ACCIDENT DELAYS -----*	
BREAKDOWN DURATION (MINS)	0
RANGE OF QUEUE DELAY - MIN (VEH-H) MAX	0
AV BREAKDOWNS PER DAY	0
AV QUEUE DELAY/DAY (VEH-H)	0
AV TOTAL DELAY/DAY (VEH-H)	0

AVERAGE ACCIDENT NUMBERS (PIA/DAY)	
MAIN ROUTE WITHOUT WORKS	0.0240
MAIN ROUTE WITH WORKS	0.0217
'DIVERSION'	0.0010
PIA: Personal Injury Accidents	
IMPACTS ON ROAD USERS	
ROAD USER COSTS PER DAY	\$60,951
CONGESTED HOURS PER DAY*	4

\*Delays Exceeding User-Specified Maximum

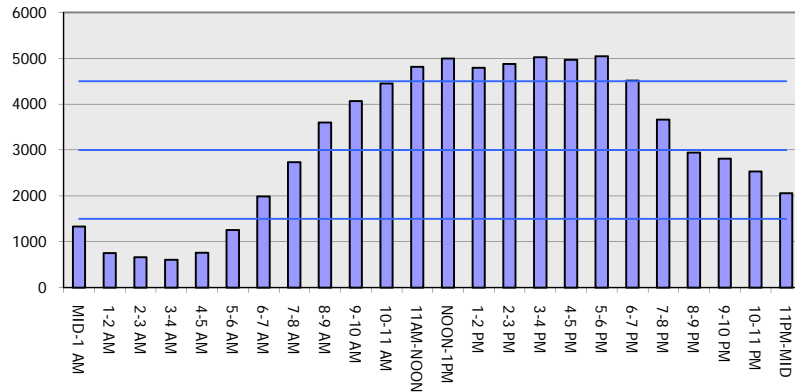
**IH 94: CTH Y/LAYTON AVE TO CTH ZZ/COLLEGE AVE (MILWAUKEE COUNTY)**  
**NIGHTTIME CLOSURE**  
**NO DIVERSION ROUTE (MAX QUEUE METHOD)**

**OCTOBER**

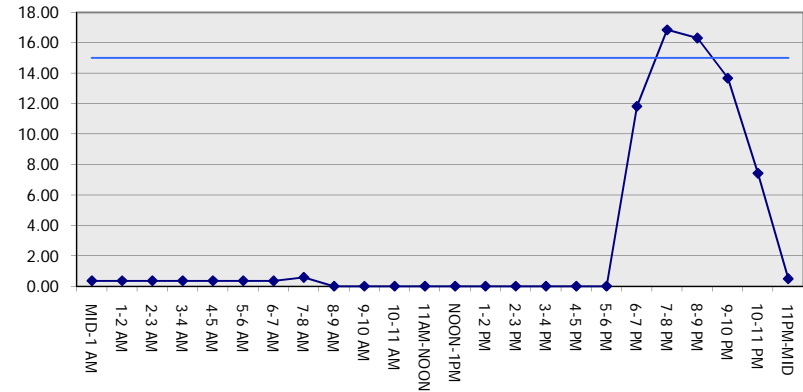
Analyzed for 2009  
 Construction Season

**GRAPHICAL REPRESENTATION OF TRAFFIC MODEL INPUT AND OUTPUT**  
**SATURDAY WESTBOUND DIRECTION**

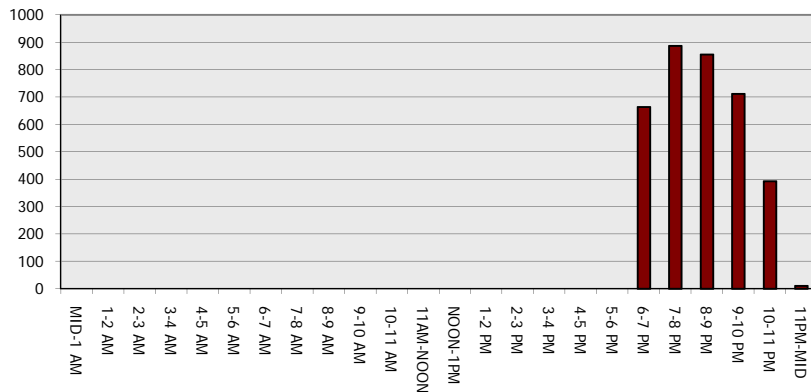
**Main Route - Traffic Demand (Vehicles Per Hour)**



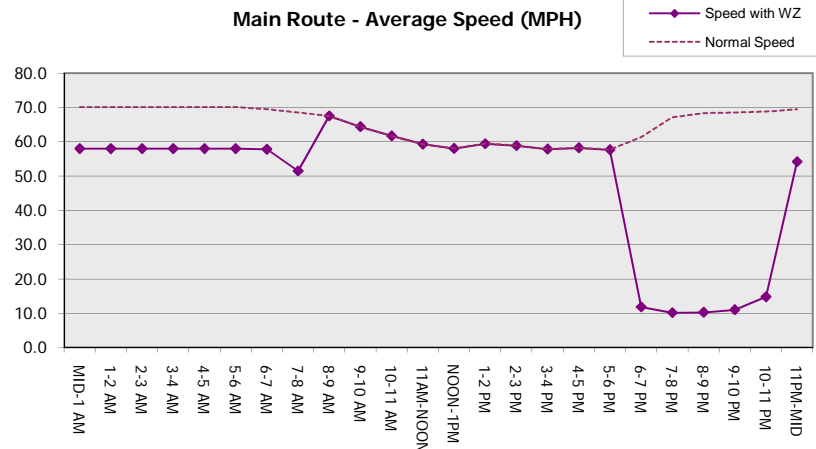
**Main Route Average Delay Per Vehicle (Minutes)**



**Main Route - Average Queue Length (Vehicles)**



**Main Route - Average Speed (MPH)**



<b>IH 94: CTH Y/LAYTON AVE TO CTH ZZ/COLLEGE AVE (MILWAUKEE COUNTY)</b> <b>NIGHTTIME CLOSURE</b> <b>NO DIVERSION ROUTE (MAX QUEUE METHOD)</b>	<b>OCTOBER</b>
	Analyzed for 2009 Construction Season

**SUMMARY OF TRAFFIC MODEL OUTPUT**

SATURDAY EASTBOUND DIRECTION

TIME OF DAY	FLOWS AND CAPACITY IN VEH/HR						AVERAGE SPEEDS IN MPH			
	MAIN ROUTE		SITE CAPA CITY	FLOW		AV.DEL PER VEH (MINS)	AVERAGE QUEUE (VEH)	MAIN ROUTE		SITE
	DEMAND FLOW	PCT HEAVY		MAIN ROUTE	'DIVER TED'			WITHOUT WORK ZONE	WITH WORK ZONE	
MID-1 AM	1277	0.0	3000	1277	0	0.36	0	70.2	58.0	49.7
1-2 AM	848	0.0	3000	848	0	0.36	0	70.2	58.0	49.7
2-3 AM	805	0.0	3000	805	0	0.36	0	70.2	58.0	49.7
3-4 AM	743	0.0	3000	743	0	0.36	0	70.2	58.0	49.7
4-5 AM	935	0.0	3000	935	0	0.36	0	70.2	58.0	49.7
5-6 AM	1589	0.0	3000	1589	0	0.36	0	70.0	57.9	49.7
6-7 AM	2169	0.0	3000	2169	0	0.35	0	69.4	57.7	49.7
7-8 AM	2511	0.0	2999	2511	0	0.44	0	68.9	55.1	46.2
8-9 AM	3306	0.0	OFF	3306	0	0.00	0	67.9	67.9	67.9
9-10 AM	4155	0.0	OFF	4155	0	0.00	0	63.8	63.8	63.8
10-11 AM	4514	0.0	OFF	4514	0	0.00	0	61.3	61.3	61.3
11AM-NOON	5010	0.0	OFF	5010	0	0.00	0	57.9	57.9	57.9
NOON-1PM	5221	0.0	OFF	5221	0	0.00	0	56.5	56.5	56.5
1-2 PM	4686	0.0	OFF	4686	0	0.00	0	60.2	60.2	60.2
2-3 PM	5061	0.0	OFF	5061	0	0.00	0	57.6	57.6	57.6
3-4 PM	5087	0.0	OFF	5087	0	0.00	0	57.4	57.4	57.4
4-5 PM	4750	0.0	OFF	4750	0	0.00	0	59.7	59.7	59.7
5-6 PM	4526	0.0	OFF	4526	0	0.00	0	61.2	61.2	61.2
6-7 PM	3902	0.0	2999	3902	0	8.64+	491	65.5	13.8	36.9
7-8 PM	3241	0.0	2999	2985	255	16.81+	883	68.0	10.1	36.9
8-9 PM	2736	0.0	2999	2736	0	14.83+	775	68.6	10.7	36.9
9-10 PM	2596	0.0	2999	2596	0	8.31	430	68.8	13.8	37.2
10-11 PM	2474	0.0	3000	2474	0	1.08	55	69.0	42.6	45.0
11PM-MID	1860	0.0	3000	1860	0	0.35	0	69.7	57.8	49.7

"OFF" INDICATES NO ROAD WORK (ALL LANES OPEN TO TRAFFIC)

+ INDICATES QUEUEING EXCEEDS USER-SPECIFIED MAXIMUM LIMIT

BREAKDOWN DURATION (MINS)	0
RANGE OF QUEUE DELAY - MIN (VEH-H) MAX	0.0
AV BREAKDOWNS PER DAY	0.00
AV QUEUE DELAY/DAY (VEH-H)	0.0
AV TOTAL DELAY/DAY (VEH-H)	0.0

BREAKDOWN DURATION (MINS)	0
RANGE OF QUEUE DELAY - MIN (VEH-H) MAX	0
AV BREAKDOWNS PER DAY	0
AV QUEUE DELAY/DAY (VEH-H)	0
AV TOTAL DELAY/DAY (VEH-H)	0

MAIN ROUTE WITHOUT WORKS	0.0236
MAIN ROUTE WITH WORKS	0.0217
'DIVERSION'	0.0002

PIA: Personal Injury Accidents

ROAD USER COSTS PER DAY	\$42,630
CONGESTED HOURS PER DAY*	3

\*Delays Exceeding User-Specified Maximum

**IH 94: CTH Y/LAYTON AVE TO CTH ZZ/COLLEGE AVE (MILWAUKEE COUNTY)**  
**NIGHTTIME CLOSURE**  
**NO DIVERSION ROUTE (MAX QUEUE METHOD)**

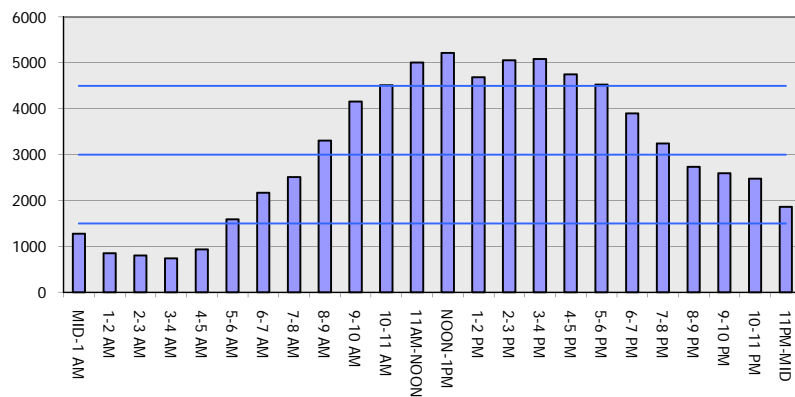
**OCTOBER**

Analyzed for 2009  
 Construction Season

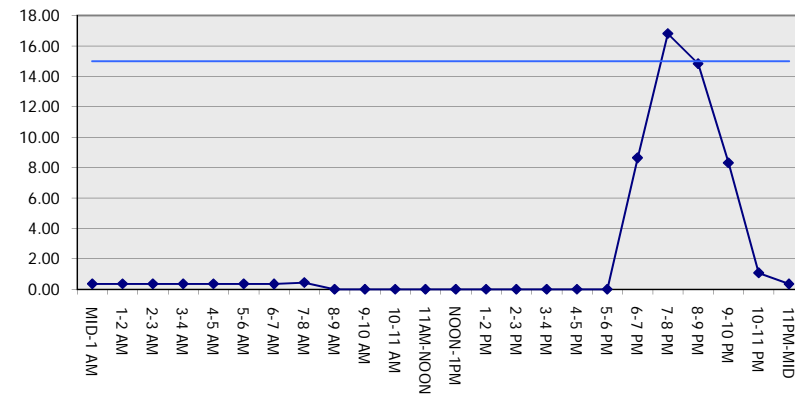
**GRAPHICAL REPRESENTATION OF TRAFFIC MODEL INPUT AND OUTPUT**

**SATURDAY EASTBOUND DIRECTION**

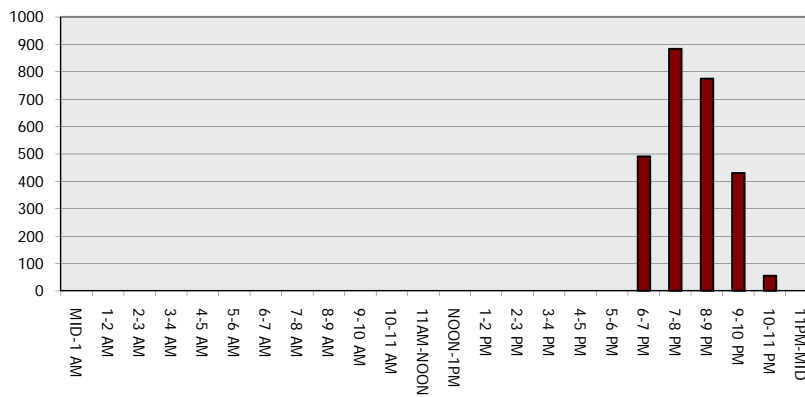
**Main Route - Traffic Demand (Vehicles Per Hour)**



**Main Route Average Delay Per Vehicle (Minutes)**



**Main Route - Average Queue Length (Vehicles)**



**Main Route - Average Speed (MPH)**

