

<b>IH 94: CTH Y/LAYTON AVE TO CTH ZZ/COLLEGE AVE (MILWAUKEE COUNTY)</b> <b>NIGHTTIME 2 LANE CLOSURE</b> <b>NO DIVERSION ROUTE (MAX QUEUE METHOD)</b>	<b>OCTOBER</b>
	Analyzed for 2009 Construction Season

**SUMMARY OF TRAFFIC MODEL OUTPUT**

MON-THUR                      WESTBOUND DIRECTION

TIME OF DAY	FLOWS AND CAPACITY IN VEH/HR						AVERAGE SPEEDS IN MPH				
	MAIN ROUTE		SITE CAPA CITY	FLOW		AV.DEL PER VEH (MINS)	AVERAGE QUEUE (VEH)	MAIN ROUTE		SITE	
	DEMAND FLOW	PCT HEAVY		MAIN ROUTE	'DIVER TED'			WITHOUT WORK ZONE	WITH WORK ZONE		
MID-1 AM	915	0.0	1499	915	0	1.72	75	70.2	35.0	42.7	
1-2 AM	550	0.0	1500	550	0	0.44	0	70.2	55.9	46.7	
2-3 AM	531	0.0	1500	531	0	0.44	0	70.2	56.0	46.8	
3-4 AM	611	0.0	1500	611	0	0.45	0	70.2	55.6	46.5	
4-5 AM	1026	0.0	1499	1026	0	0.60	0	70.2	52.0	41.8	
5-6 AM	2788	0.0	OFF	2788	0	0.00	0	68.6	68.6	68.6	
6-7 AM	5457	0.0	OFF	5457	0	0.00	0	54.9	54.9	54.9	
7-8 AM	6096	0.0	OFF	6096	0	0.00	0	50.5	50.5	50.5	
8-9 AM	5064	0.0	OFF	5064	0	0.00	0	57.6	57.6	57.6	
9-10 AM	4214	0.0	OFF	4214	0	0.00	0	63.3	63.3	63.3	
10-11 AM	4073	0.0	OFF	4073	0	0.00	0	64.3	64.3	64.3	
11AM-NOON	4101	0.0	OFF	4101	0	0.00	0	64.1	64.1	64.1	
NOON-1PM	4244	0.0	OFF	4244	0	0.00	0	63.2	63.2	63.2	
1-2 PM	4402	0.0	OFF	4402	0	0.00	0	62.1	62.1	62.1	
2-3 PM	4910	0.0	OFF	4910	0	0.00	0	58.6	58.6	58.6	
3-4 PM	5499	0.0	OFF	5499	0	0.00	0	54.6	54.6	54.6	
4-5 PM	5212	0.0	OFF	5212	0	0.00	0	56.6	56.6	56.6	
5-6 PM	5026	0.0	OFF	5026	0	0.00	0	57.8	57.8	57.8	
6-7 PM	4244	0.0	OFF	4244	0	0.00	0	63.2	63.2	63.2	
7-8 PM	3112	0.0	1499	1573	1539	17.09+	429	68.2	7.5	39.0	
8-9 PM	2552	0.0	1499	1706	846	14.31+	373	68.9	8.4	37.4	
9-10 PM	2507	0.0	1499	1584	923	16.57+	408	68.9	7.6	32.5	
10-11 PM	1971	0.0	1500	1517	455	16.67+	409	69.6	7.6	32.5	
11PM-MID	1391	0.0	1500	1391	0	14.59+	357	70.2	8.2	32.4	

"OFF" INDICATES NO ROAD WORK (ALL LANES OPEN TO TRAFFIC)

+ INDICATES QUEUEING EXCEEDS USER-SPECIFIED MAXIMUM LIMIT

*----- SITE BREAKDOWN DELAYS -----*	
BREAKDOWN DURATION (MINS)	0
RANGE OF QUEUE DELAY - MIN	0.0
(VEH-H) MAX	0.0
AV BREAKDOWNS PER DAY	0.00
AV QUEUE DELAY/DAY (VEH-H)	0.0
AV TOTAL DELAY/DAY (VEH-H)	0.0

*----- SITE ACCIDENT DELAYS -----*	
BREAKDOWN DURATION (MINS)	0
RANGE OF QUEUE DELAY - MIN	0
(VEH-H) MAX	0
AV BREAKDOWNS PER DAY	0
AV QUEUE DELAY/DAY (VEH-H)	0
AV TOTAL DELAY/DAY (VEH-H)	0

AVERAGE ACCIDENT NUMBERS (PIA/DAY)	
MAIN ROUTE WITHOUT WORKS	0.0256
MAIN ROUTE WITH WORKS	0.0237
'DIVERSION'	0.0028
<small>PIA: Personal Injury Accidents</small>	
IMPACTS ON ROAD USERS	
ROAD USER COSTS PER DAY	\$42,719
CONGESTED HOURS PER DAY*	5

\*Delays Exceeding User-Specified Maximum

**IH 94: CTH Y/LAYTON AVE TO CTH ZZ/COLLEGE AVE (MILWAUKEE COUNTY)**  
**NIGHTTIME 2 LANE CLOSURE**  
**NO DIVERSION ROUTE (MAX QUEUE METHOD)**

**OCTOBER**

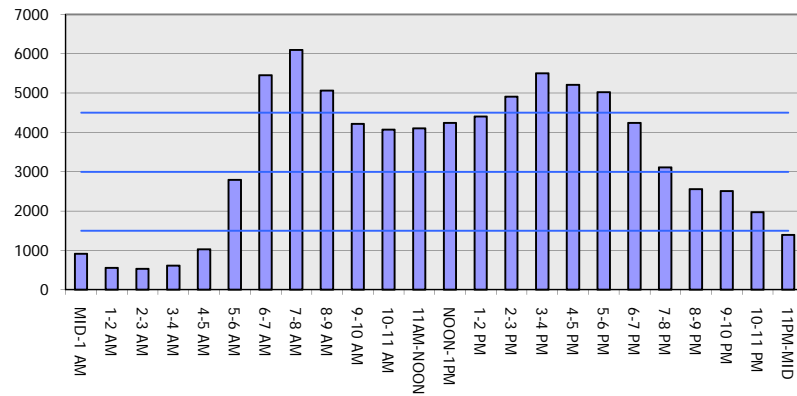
Analyzed for 2009  
 Construction Season

**GRAPHICAL REPRESENTATION OF TRAFFIC MODEL INPUT AND OUTPUT**

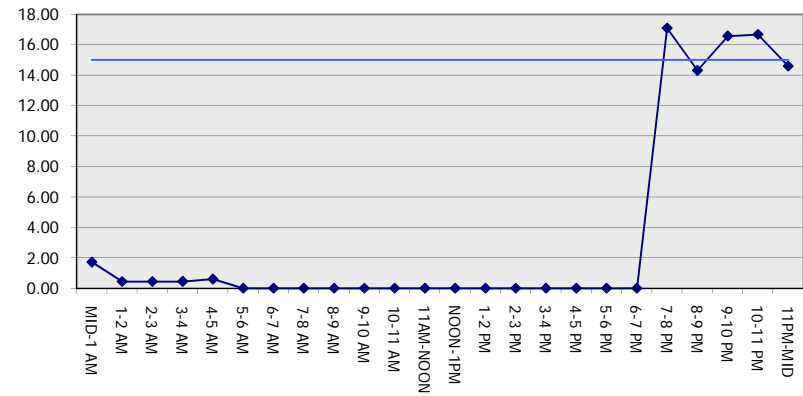
**MON-THUR**

**WESTBOUND DIRECTION**

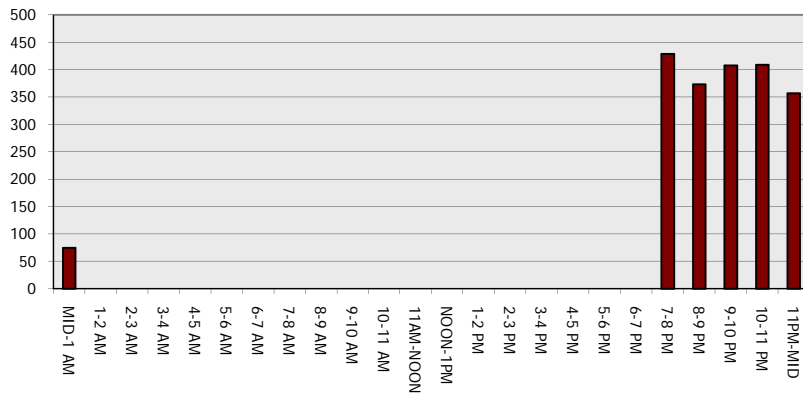
**Main Route - Traffic Demand (Vehicles Per Hour)**



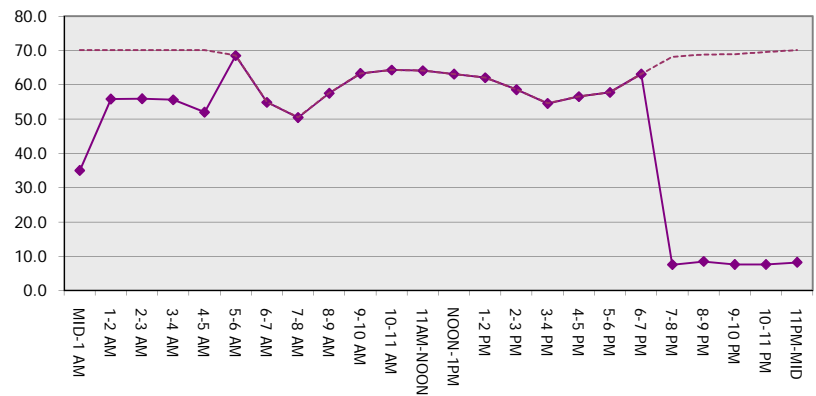
**Main Route Average Delay Per Vehicle (Minutes)**



**Main Route - Average Queue Length (Vehicles)**



**Main Route - Average Speed (MPH)**



<b>IH 94: CTH Y/LAYTON AVE TO CTH ZZ/COLLEGE AVE (MILWAUKEE COUNTY)</b>	<b>OCTOBER</b>
<b>NIGHTTIME 2 LANE CLOSURE</b>	Analyzed for 2009
<b>NO DIVERSION ROUTE (MAX QUEUE METHOD)</b>	Construction Season

**SUMMARY OF TRAFFIC MODEL OUTPUT**

MON-THUR                      EASTBOUND DIRECTION

TIME OF DAY	FLOWS AND CAPACITY IN VEH/HR							AVERAGE SPEEDS IN MPH			
	MAIN ROUTE		SITE CAPA CITY	FLOW		AV.DEL PER VEH (MINS)	AVERAGE QUEUE (VEH)	MAIN ROUTE		SITE	
	DEMAND FLOW	PCT HEAVY		MAIN ROUTE	'DIVER TED'			WITHOUT WORK ZONE	WITH WORK ZONE		
MID-1 AM	820	0.0	1499	820	0	1.60	72	70.2	36.3	44.5	
1-2 AM	599	0.0	1500	599	0	0.44	0	70.2	55.7	46.5	
2-3 AM	587	0.0	1500	587	0	0.44	0	70.2	55.8	46.5	
3-4 AM	755	0.0	1500	755	0	0.46	0	70.2	55.2	45.8	
4-5 AM	1406	0.0	1499	1406	0	1.28	24	70.2	40.1	38.4	
5-6 AM	3065	0.0	OFF	3065	0	0.02	1	68.2	67.5	67.5	
6-7 AM	5212	0.0	OFF	5212	0	0.00	0	56.6	56.6	56.6	
7-8 AM	4721	0.0	OFF	4721	0	0.00	0	59.9	59.9	59.9	
8-9 AM	4529	0.0	OFF	4529	0	0.00	0	61.2	61.2	61.2	
9-10 AM	4032	0.0	OFF	4032	0	0.00	0	64.6	64.6	64.6	
10-11 AM	3862	0.0	OFF	3862	0	0.00	0	65.8	65.8	65.8	
11AM-NOON	4142	0.0	OFF	4142	0	0.00	0	63.8	63.8	63.8	
NOON-1PM	4470	0.0	OFF	4470	0	0.00	0	61.6	61.6	61.6	
1-2 PM	4769	0.0	OFF	4769	0	0.00	0	59.6	59.6	59.6	
2-3 PM	5563	0.0	OFF	5563	0	0.00	0	54.2	54.2	54.2	
3-4 PM	6140	0.0	OFF	6140	0	0.00	0	50.2	50.2	50.2	
4-5 PM	6543	0.0	OFF	6543	0	0.00	0	47.4	47.4	47.4	
5-6 PM	6596	0.0	OFF	6596	0	0.00	0	47.1	47.1	47.1	
6-7 PM	5145	0.0	OFF	5145	0	0.00	0	57.0	57.0	57.0	
7-8 PM	3667	0.0	1499	1574	2093	17.10+	430	67.1	7.5	39.0	
8-9 PM	2971	0.0	1499	1668	1303	14.88+	390	68.4	8.3	37.9	
9-10 PM	2693	0.0	1499	1646	1047	16.39+	404	68.7	7.6	32.5	
10-11 PM	2046	0.0	1500	1502	545	16.73+	411	69.5	7.6	32.5	
11PM-MID	1400	0.0	1500	1400	0	15.38+	377	70.2	7.9	32.4	

"OFF" INDICATES NO ROAD WORK (ALL LANES OPEN TO TRAFFIC)

+ INDICATES QUEUEING EXCEEDS USER-SPECIFIED MAXIMUM LIMIT

*----- SITE BREAKDOWN DELAYS -----*	
BREAKDOWN DURATION (MINS)	0
RANGE OF QUEUE DELAY - MIN (VEH-H) MAX	0.0
AV BREAKDOWNS PER DAY	0.00
AV QUEUE DELAY/DAY (VEH-H)	0.0
AV TOTAL DELAY/DAY (VEH-H)	0.0

*----- SITE ACCIDENT DELAYS -----*	
BREAKDOWN DURATION (MINS)	0
RANGE OF QUEUE DELAY - MIN (VEH-H) MAX	0
AV BREAKDOWNS PER DAY	0
AV QUEUE DELAY/DAY (VEH-H)	0
AV TOTAL DELAY/DAY (VEH-H)	0

AVERAGE ACCIDENT NUMBERS (PIA/DAY)	
MAIN ROUTE WITHOUT WORKS	0.0273
MAIN ROUTE WITH WORKS	0.0249
'DIVERSION'	0.0037

PIA: Personal Injury Accidents

ECONOMIC IMPACT ON ROAD USERS	
ROAD USER COSTS PER DAY	\$48,082
CONGESTED HOURS PER DAY*	5

\*Delays Exceeding User-Specified Maximum

**IH 94: CTH Y/LAYTON AVE TO CTH ZZ/COLLEGE AVE (MILWAUKEE COUNTY)**  
**NIGHTTIME 2 LANE CLOSURE**  
**NO DIVERSION ROUTE (MAX QUEUE METHOD)**

**OCTOBER**

Analyzed for 2009  
 Construction Season

**GRAPHICAL REPRESENTATION OF TRAFFIC MODEL INPUT AND OUTPUT**

**MON-THUR EASTBOUND DIRECTION**

