

IH 94: CTH Y/LAYTON AVE TO CTH ZZ/COLLEGE AVE (MILWAUKEE COUNTY) NIGHTTIME CLOSURE NO DIVERSION ROUTE (MAX QUEUE METHOD)	OCTOBER
	Analyzed for 2009 Construction Season

SUMMARY OF TRAFFIC MODEL OUTPUT

FRIDAY WESTBOUND DIRECTION

TIME OF DAY	FLOWS AND CAPACITY IN VEH/HR						AVERAGE SPEEDS IN MPH			
	MAIN ROUTE		SITE CAPA CITY	FLOW		AV.DEL PER VEH (MINS)	AVERAGE QUEUE (VEH)	MAIN ROUTE		SITE
	DEMAND FLOW	PCT HEAVY		MAIN ROUTE	'DIVER TED'			WITHOUT WORK ZONE	WITH WORK ZONE	
MID-1 AM	1105	0.0	3000	1105	0	0.36	0	70.2	58.0	49.7
1-2 AM	708	0.0	3000	708	0	0.36	0	70.2	58.0	49.7
2-3 AM	663	0.0	3000	663	0	0.36	0	70.2	58.0	49.7
3-4 AM	758	0.0	3000	758	0	0.36	0	70.2	58.0	49.7
4-5 AM	1042	0.0	3000	1042	0	0.36	0	70.2	58.0	49.7
5-6 AM	2850	0.0	OFF	2850	0	0.00	0	68.5	68.5	68.5
6-7 AM	5495	0.0	OFF	5495	0	0.00	0	54.6	54.6	54.6
7-8 AM	6130	0.0	OFF	6130	0	0.00	0	50.3	50.3	50.3
8-9 AM	5164	0.0	OFF	5164	0	0.00	0	56.9	56.9	56.9
9-10 AM	4513	0.0	OFF	4513	0	0.00	0	61.4	61.4	61.4
10-11 AM	4746	0.0	OFF	4746	0	0.00	0	59.7	59.7	59.7
11AM-NOON	4993	0.0	OFF	4993	0	0.00	0	58.1	58.1	58.1
NOON-1PM	5232	0.0	OFF	5232	0	0.00	0	56.4	56.4	56.4
1-2 PM	5267	0.0	OFF	5267	0	0.00	0	56.2	56.2	56.2
2-3 PM	6037	0.0	OFF	6037	0	0.00	0	50.9	50.9	50.9
3-4 PM	6316	0.0	OFF	6316	0	0.00	0	49.0	49.0	49.0
4-5 PM	5962	0.0	OFF	5962	0	0.00	0	51.4	51.4	51.4
5-6 PM	6013	0.0	OFF	6013	0	0.00	0	51.1	51.1	51.1
6-7 PM	5406	0.0	OFF	5406	0	0.00	0	55.2	55.2	55.2
7-8 PM	4551	0.0	2999	3917	634	12.11+	676	61.0	11.7	36.9
8-9 PM	3632	0.0	3000	2986	646	16.86+	887	67.4	10.1	36.9
9-10 PM	3430	0.0	2999	2992	438	16.84+	885	67.8	10.1	36.9
10-11 PM	2726	0.0	2999	2726	0	15.26+	799	68.6	10.6	36.9
11PM-MID	2077	0.0	2999	2077	0	2.66	250	69.4	29.0	44.8

"OFF" INDICATES NO ROAD WORK (ALL LANES OPEN TO TRAFFIC)

+ INDICATES QUEUEING EXCEEDS USER-SPECIFIED MAXIMUM LIMIT

----- SITE BREAKDOWN DELAYS -----	
BREAKDOWN DURATION (MINS)	0
RANGE OF QUEUE DELAY - MIN (VEH-H) MAX	0.0
AV BREAKDOWNS PER DAY	0.00
AV QUEUE DELAY/DAY (VEH-H)	0.0
AV TOTAL DELAY/DAY (VEH-H)	0.0

----- SITE ACCIDENT DELAYS -----	
BREAKDOWN DURATION (MINS)	0
RANGE OF QUEUE DELAY - MIN (VEH-H) MAX	0
AV BREAKDOWNS PER DAY	0
AV QUEUE DELAY/DAY (VEH-H)	0
AV TOTAL DELAY/DAY (VEH-H)	0

AVERAGE ACCIDENT NUMBERS (PIA/DAY)	
MAIN ROUTE WITHOUT WORKS	0.0302
MAIN ROUTE WITH WORKS	0.0284
'DIVERSION'	0.0013
PIA: Personal Injury Accidents	
IMPACTS ON ROAD USERS	
ROAD USER COSTS PER DAY	\$54,442
CONGESTED HOURS PER DAY*	4

*Delays Exceeding User-Specified Maximum

IH 94: CTH Y/LAYTON AVE TO CTH ZZ/COLLEGE AVE (MILWAUKEE COUNTY)
NIGHTTIME CLOSURE
NO DIVERSION ROUTE (MAX QUEUE METHOD)

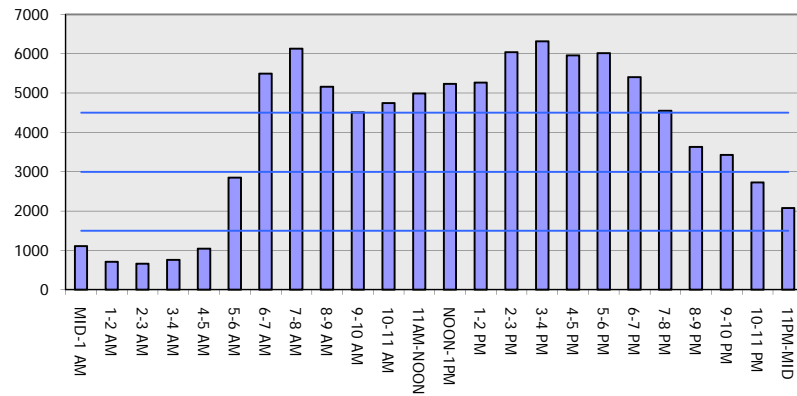
OCTOBER

Analyzed for 2009
 Construction Season

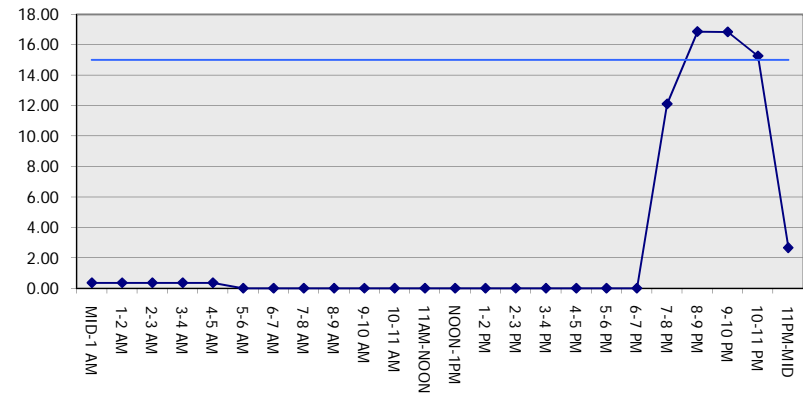
GRAPHICAL REPRESENTATION OF TRAFFIC MODEL INPUT AND OUTPUT

FRIDAY WESTBOUND DIRECTION

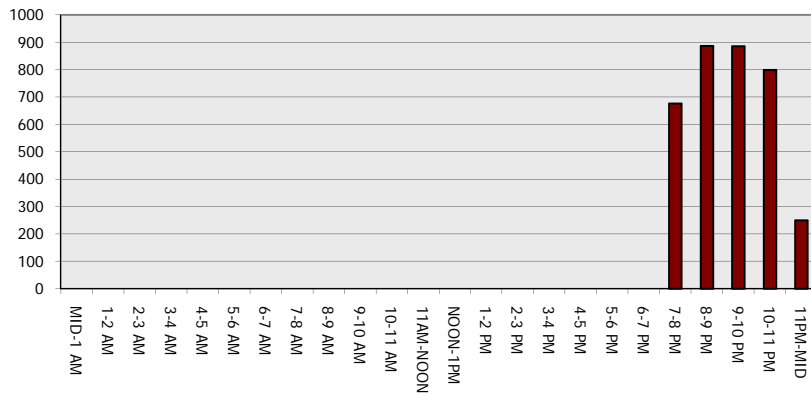
Main Route - Traffic Demand (Vehicles Per Hour)



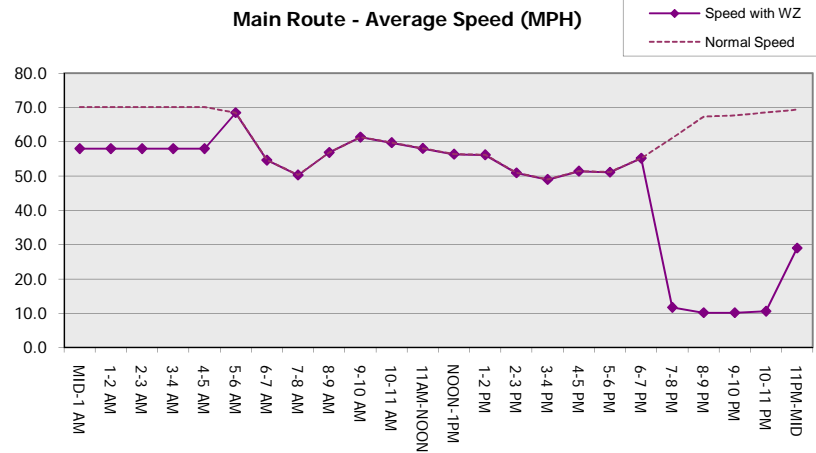
Main Route Average Delay Per Vehicle (Minutes)



Main Route - Average Queue Length (Vehicles)



Main Route - Average Speed (MPH)



IH 94: CTH Y/LAYTON AVE TO CTH ZZ/COLLEGE AVE (MILWAUKEE COUNTY) NIGHTTIME CLOSURE NO DIVERSION ROUTE (MAX QUEUE METHOD)	OCTOBER
	Analyzed for 2009 Construction Season

SUMMARY OF TRAFFIC MODEL OUTPUT

FRIDAY EASTBOUND DIRECTION

TIME OF DAY	FLOWS AND CAPACITY IN VEH/HR						AVERAGE SPEEDS IN MPH			
	MAIN ROUTE		SITE CAPA CITY	FLOW		AV.DEL PER VEH (MINS)	AVERAGE QUEUE (VEH)	MAIN ROUTE		SITE
	DEMAND FLOW	PCT HEAVY		MAIN ROUTE	'DIVER TED'			WITHOUT WORK ZONE	WITH WORK ZONE	
MID-1 AM	964	0.0	3000	964	0	0.36	0	70.2	58.0	49.7
1-2 AM	708	0.0	3000	708	0	0.36	0	70.2	58.0	49.7
2-3 AM	687	0.0	3000	687	0	0.36	0	70.2	58.0	49.7
3-4 AM	901	0.0	3000	901	0	0.36	0	70.2	58.0	49.7
4-5 AM	1481	0.0	3000	1481	0	0.36	0	70.2	58.0	49.7
5-6 AM	2968	0.0	OFF	2968	0	0.00	0	68.4	68.4	68.4
6-7 AM	5007	0.0	OFF	5007	0	0.00	0	57.9	57.9	57.9
7-8 AM	4952	0.0	OFF	4952	0	0.00	0	58.3	58.3	58.3
8-9 AM	4378	0.0	OFF	4378	0	0.00	0	62.2	62.2	62.2
9-10 AM	4159	0.0	OFF	4159	0	0.00	0	63.8	63.8	63.8
10-11 AM	4258	0.0	OFF	4258	0	0.00	0	63.1	63.1	63.1
11AM-NOON	4590	0.0	OFF	4590	0	0.00	0	60.8	60.8	60.8
NOON-1PM	5007	0.0	OFF	5007	0	0.00	0	57.9	57.9	57.9
1-2 PM	5351	0.0	OFF	5351	0	0.00	0	55.6	55.6	55.6
2-3 PM	6128	0.0	OFF	6128	0	0.00	0	50.3	50.3	50.3
3-4 PM	6497	0.0	OFF	6497	0	0.00	0	47.8	47.8	47.8
4-5 PM	6978	0.0	OFF	6978	0	0.00	0	44.5	44.5	44.5
5-6 PM	6824	0.0	OFF	6824	0	0.00	0	45.5	45.5	45.5
6-7 PM	5376	0.0	OFF	5376	0	0.00	0	55.5	55.5	55.5
7-8 PM	4040	0.0	2999	3942	98	10.17+	576	64.6	12.8	36.9
8-9 PM	3146	0.0	2999	2940	206	16.73+	878	68.1	10.2	36.9
9-10 PM	3053	0.0	3000	2988	65	16.75+	879	68.2	10.2	36.9
10-11 PM	2530	0.0	2999	2530	0	12.79+	673	68.9	11.4	37.1
11PM-MID	1854	0.0	3000	1854	0	1.08	84	69.7	43.2	49.4

"OFF" INDICATES NO ROAD WORK (ALL LANES OPEN TO TRAFFIC)

+ INDICATES QUEUEING EXCEEDS USER-SPECIFIED MAXIMUM LIMIT

----- SITE BREAKDOWN DELAYS -----	
BREAKDOWN DURATION (MINS)	0
RANGE OF QUEUE DELAY - MIN (VEH-H) MAX	0.0
AV BREAKDOWNS PER DAY	0.00
AV QUEUE DELAY/DAY (VEH-H)	0.0
AV TOTAL DELAY/DAY (VEH-H)	0.0

----- SITE ACCIDENT DELAYS -----	
BREAKDOWN DURATION (MINS)	0
RANGE OF QUEUE DELAY - MIN (VEH-H) MAX	0
AV BREAKDOWNS PER DAY	0
AV QUEUE DELAY/DAY (VEH-H)	0
AV TOTAL DELAY/DAY (VEH-H)	0

AVERAGE ACCIDENT NUMBERS (PIA/DAY)	
MAIN ROUTE WITHOUT WORKS	0.0292
MAIN ROUTE WITH WORKS	0.0279
'DIVERSION'	0.0003

PIA: Personal Injury Accidents

ECONOMIC IMPACT ON ROAD USERS	
ROAD USER COSTS PER DAY	\$44,215
CONGESTED HOURS PER DAY*	4

*Delays Exceeding User-Specified Maximum

IH 94: CTH Y/LAYTON AVE TO CTH ZZ/COLLEGE AVE (MILWAUKEE COUNTY)
NIGHTTIME CLOSURE
NO DIVERSION ROUTE (MAX QUEUE METHOD)

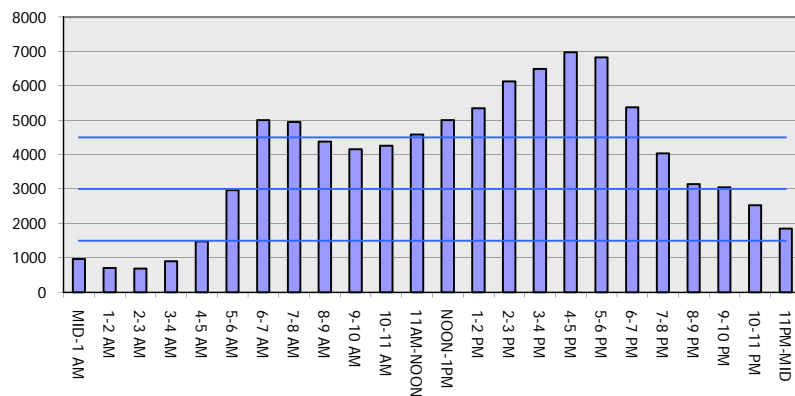
OCTOBER

Analyzed for 2009
 Construction Season

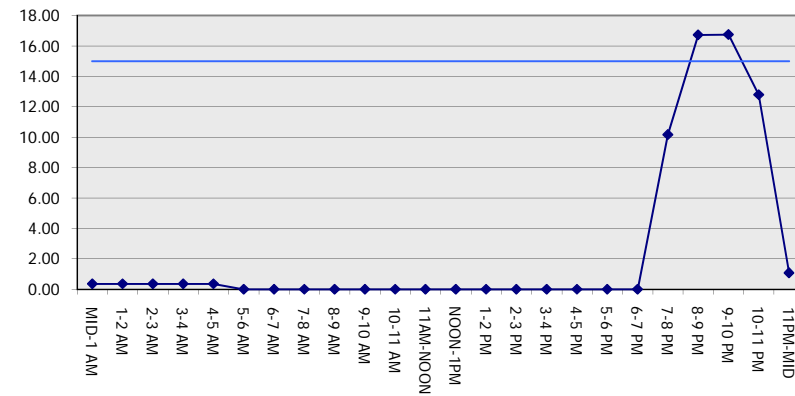
GRAPHICAL REPRESENTATION OF TRAFFIC MODEL INPUT AND OUTPUT

FRIDAY EASTBOUND DIRECTION

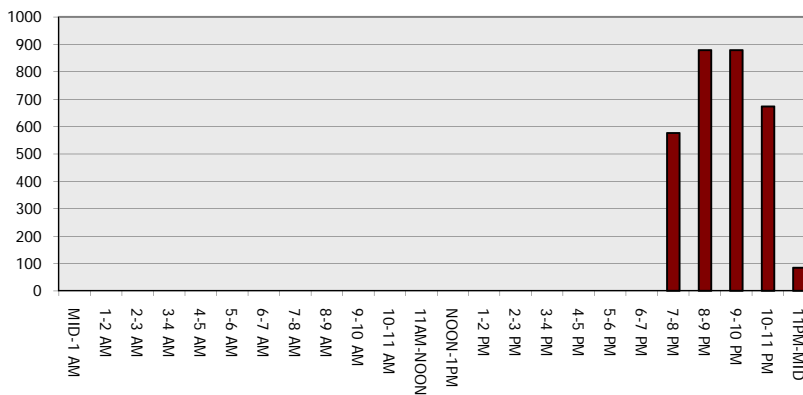
Main Route - Traffic Demand (Vehicles Per Hour)



Main Route Average Delay Per Vehicle (Minutes)



Main Route - Average Queue Length (Vehicles)



Main Route - Average Speed (MPH)

