

<b>IH 43/94: BECHER ST TO MITCHELL INTERCHANGE (MILWAUKEE COUNTY)</b> <b>NIGHTTIME 2 LANE CLOSURE</b> <b>NO DIVERSION ROUTE (MAX QUEUE METHOD)</b>	<b>OCTOBER</b>
	Analyzed for 2009 Construction Season

**SUMMARY OF TRAFFIC MODEL OUTPUT**

SUNDAY WESTBOUND DIRECTION

TIME OF DAY	FLOWS AND CAPACITY IN VEH/HR						AVERAGE SPEEDS IN MPH				
	MAIN ROUTE		SITE CAPA CITY	FLOW		AV.DEL PER VEH (MINS)	AVERAGE QUEUE (VEH)	MAIN ROUTE		SITE	
	DEMAND FLOW	PCT HEAVY		MAIN ROUTE	'DIVER TED'			WITHOUT WORK ZONE	WITH WORK ZONE		
MID-1 AM	1105	0.0	1500	1105	0	0.60	0	69.4	57.9	41.3	
1-2 AM	838	0.0	1500	838	0	0.57	0	69.7	58.6	42.2	
2-3 AM	897	0.0	1500	897	0	0.58	0	69.6	58.4	42.0	
3-4 AM	483	0.0	1500	483	0	0.53	0	70.1	59.6	43.6	
4-5 AM	440	0.0	1500	440	0	0.53	0	70.2	59.7	43.7	
5-6 AM	519	0.0	1500	519	0	0.53	0	70.1	59.4	43.4	
6-7 AM	785	0.0	1500	785	0	0.56	0	69.7	58.7	42.4	
7-8 AM	1034	0.0	1499	1034	0	0.59	0	69.4	58.1	41.5	
8-9 AM	1504	0.0	1499	1504	0	1.59	19	68.9	45.2	32.5	
9-10 AM	2246	0.0	OFF	2246	0	0.01	0	67.9	67.7	67.7	
10-11 AM	2897	0.0	OFF	2897	0	0.00	0	67.1	67.1	67.1	
11AM-NOON	3528	0.0	OFF	3528	0	0.00	0	66.3	66.3	66.3	
NOON-1PM	3822	0.0	OFF	3822	0	0.00	0	64.8	64.8	64.8	
1-2 PM	3923	0.0	OFF	3923	0	0.00	0	64.0	64.0	64.0	
2-3 PM	3927	0.0	OFF	3927	0	0.00	0	64.0	64.0	64.0	
3-4 PM	3931	0.0	OFF	3931	0	0.00	0	64.0	64.0	64.0	
4-5 PM	3741	0.0	OFF	3741	0	0.00	0	65.3	65.3	65.3	
5-6 PM	3464	0.0	OFF	3464	0	0.00	0	66.4	66.4	66.4	
6-7 PM	3086	0.0	OFF	3086	0	0.00	0	66.9	66.9	66.9	
7-8 PM	2674	0.0	1499	1697	978	13.94+	352	67.4	12.3	35.6	
8-9 PM	1877	0.0	1499	1703	174	14.42+	356	68.4	12.0	30.8	
9-10 PM	1634	0.0	1499	1500	134	16.37+	399	68.7	10.8	30.8	
10-11 PM	1212	0.0	1499	1212	0	10.88	277	69.2	15.1	32.2	
11PM-MID	915	0.0	1500	915	0	0.84	10	69.6	54.4	41.9	

"OFF" INDICATES NO ROAD WORK (ALL LANES OPEN TO TRAFFIC)

+ INDICATES QUEUEING EXCEEDS USER-SPECIFIED MAXIMUM LIMIT

*----- SITE BREAKDOWN DELAYS -----*	
BREAKDOWN DURATION (MINS)	0
RANGE OF QUEUE DELAY - MIN (VEH-H) MAX	0.0
AV BREAKDOWNS PER DAY	0.00
AV QUEUE DELAY/DAY (VEH-H)	0.0
AV TOTAL DELAY/DAY (VEH-H)	0.0

*----- SITE ACCIDENT DELAYS -----*	
BREAKDOWN DURATION (MINS)	0
RANGE OF QUEUE DELAY - MIN (VEH-H) MAX	0
AV BREAKDOWNS PER DAY	0
AV QUEUE DELAY/DAY (VEH-H)	0
AV TOTAL DELAY/DAY (VEH-H)	0

AVERAGE ACCIDENT NUMBERS (PIA/DAY)	
MAIN ROUTE WITHOUT WORKS	0.0281
MAIN ROUTE WITH WORKS	0.0264
'DIVERSION'	0.0017
<small>PIA: Personal Injury Accidents</small>	
IMPACTS ON ROAD USERS	
ROAD USER COSTS PER DAY	\$28,505
CONGESTED HOURS PER DAY*	3

\*Delays Exceeding User-Specified Maximum

**IH 43/94: BECHER ST TO MITCHELL INTERCHANGE (MILWAUKEE COUNTY)**  
**NIGHTTIME 2 LANE CLOSURE**  
**NO DIVERSION ROUTE (MAX QUEUE METHOD)**

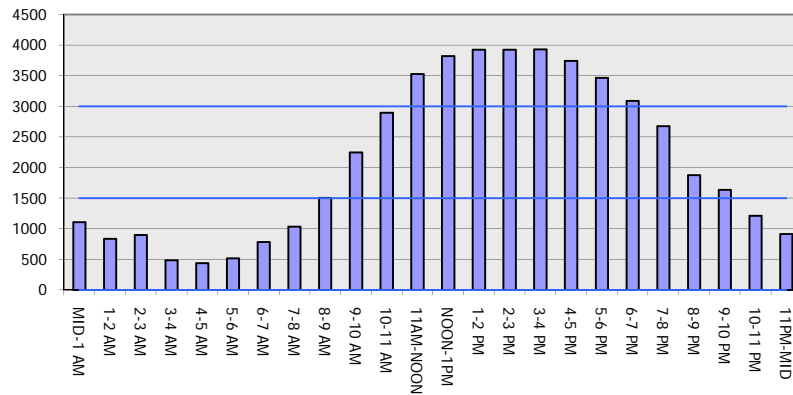
**OCTOBER**

Analyzed for 2009  
 Construction Season

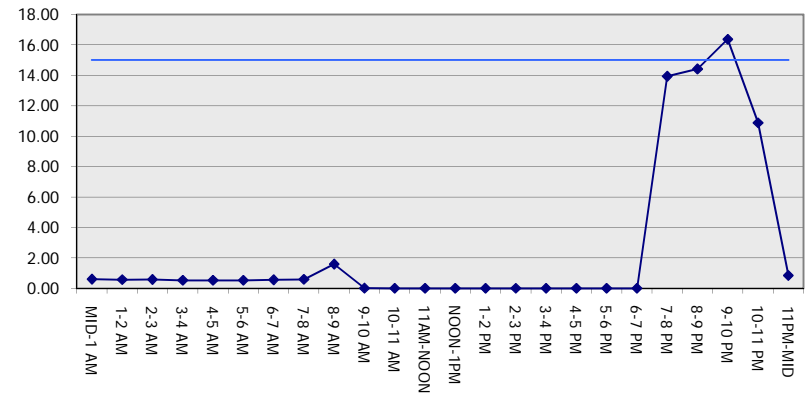
**GRAPHICAL REPRESENTATION OF TRAFFIC MODEL INPUT AND OUTPUT**

**SUNDAY WESTBOUND DIRECTION**

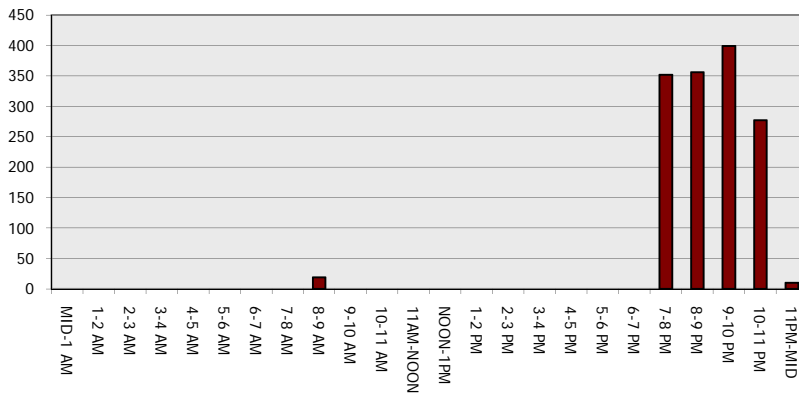
**Main Route - Traffic Demand (Vehicles Per Hour)**



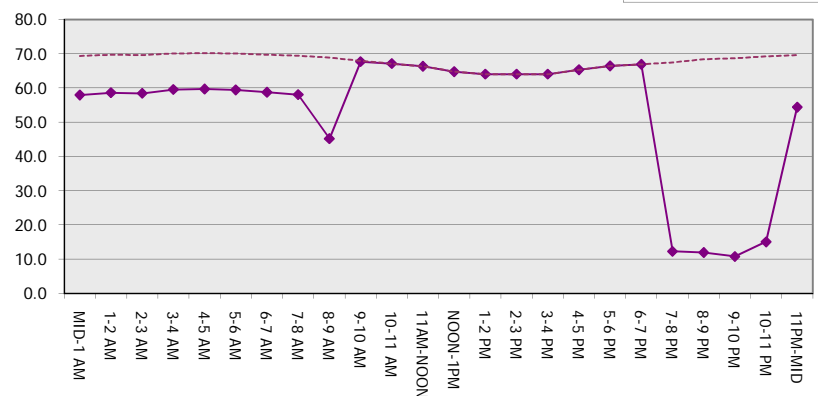
**Main Route Average Delay Per Vehicle (Minutes)**



**Main Route - Average Queue Length (Vehicles)**



**Main Route - Average Speed (MPH)**



<b>IH 43/94: BECHER ST TO MITCHELL INTERCHANGE (MILWAUKEE COUNTY)</b> <b>NIGHTTIME 2 LANE CLOSURE</b> <b>NO DIVERSION ROUTE (MAX QUEUE METHOD)</b>	<b>OCTOBER</b>
	Analyzed for 2009 Construction Season

**SUMMARY OF TRAFFIC MODEL OUTPUT**

SUNDAY EASTBOUND DIRECTION

TIME OF DAY	FLOWS AND CAPACITY IN VEH/HR						AVERAGE SPEEDS IN MPH			
	MAIN ROUTE		SITE CAPA CITY	FLOW		AV.DEL PER VEH (MINS)	AVERAGE QUEUE (VEH)	MAIN ROUTE		SITE
	DEMAND FLOW	PCT HEAVY		MAIN ROUTE	'DIVER TED'			WITHOUT WORK ZONE	WITH WORK ZONE	
MID-1 AM	990	0.0	1500	990	0	0.59	0	69.5	58.2	41.7
1-2 AM	547	0.0	1500	547	0	0.54	0	70.0	59.4	43.3
2-3 AM	457	0.0	1500	457	0	0.53	0	70.2	59.6	43.7
3-4 AM	291	0.0	1500	291	0	0.51	0	70.2	60.0	44.3
4-5 AM	294	0.0	1500	294	0	0.51	0	70.2	60.0	44.3
5-6 AM	464	0.0	1500	464	0	0.53	0	70.2	59.6	43.7
6-7 AM	793	0.0	1500	793	0	0.56	0	69.7	58.7	42.4
7-8 AM	1085	0.0	1499	1085	0	0.63	0	69.4	57.4	40.5
8-9 AM	1520	0.0	1499	1520	0	1.57	16	68.9	45.5	31.8
9-10 AM	1992	0.0	OFF	1992	0	0.01	0	68.2	68.1	68.1
10-11 AM	2395	0.0	OFF	2395	0	0.00	0	67.8	67.8	67.8
11AM-NOON	2748	0.0	OFF	2748	0	0.00	0	67.3	67.3	67.3
NOON-1PM	3073	0.0	OFF	3073	0	0.00	0	66.9	66.9	66.9
1-2 PM	3136	0.0	OFF	3136	0	0.00	0	66.8	66.8	66.8
2-3 PM	3153	0.0	OFF	3153	0	0.00	0	66.8	66.8	66.8
3-4 PM	3318	0.0	OFF	3318	0	0.00	0	66.6	66.6	66.6
4-5 PM	3366	0.0	OFF	3366	0	0.00	0	66.6	66.6	66.6
5-6 PM	3325	0.0	OFF	3325	0	0.00	0	66.6	66.6	66.6
6-7 PM	3132	0.0	OFF	3132	0	0.00	0	66.8	66.8	66.8
7-8 PM	2600	0.0	1499	1764	836	13.56+	339	67.5	12.6	35.2
8-9 PM	2023	0.0	1499	1660	362	15.73+	385	68.2	11.2	30.8
9-10 PM	1718	0.0	1500	1478	240	16.27+	397	68.6	10.9	30.8
10-11 PM	1266	0.0	1499	1266	0	12.47+	310	69.2	13.5	31.2
11PM-MID	927	0.0	1500	927	0	1.17	26	69.6	50.2	41.7

"OFF" INDICATES NO ROAD WORK (ALL LANES OPEN TO TRAFFIC)

+ INDICATES QUEUEING EXCEEDS USER-SPECIFIED MAXIMUM LIMIT

*----- SITE BREAKDOWN DELAYS -----*	
BREAKDOWN DURATION (MINS)	0
RANGE OF QUEUE DELAY - MIN (VEH-H) MAX	0.0
AV BREAKDOWNS PER DAY	0.00
AV QUEUE DELAY/DAY (VEH-H)	0.0
AV TOTAL DELAY/DAY (VEH-H)	0.0

*----- SITE ACCIDENT DELAYS -----*	
BREAKDOWN DURATION (MINS)	0
RANGE OF QUEUE DELAY - MIN (VEH-H) MAX	0
AV BREAKDOWNS PER DAY	0
AV QUEUE DELAY/DAY (VEH-H)	0
AV TOTAL DELAY/DAY (VEH-H)	0

AVERAGE ACCIDENT NUMBERS (PIA/DAY)	
MAIN ROUTE WITHOUT WORKS	0.0248
MAIN ROUTE WITH WORKS	0.0231
'DIVERSION'	0.0019

PIA: Personal Injury Accidents

ECONOMIC IMPACT ON ROAD USERS	
ROAD USER COSTS PER DAY	\$30,090
CONGESTED HOURS PER DAY*	4

\*Delays Exceeding User-Specified Maximum

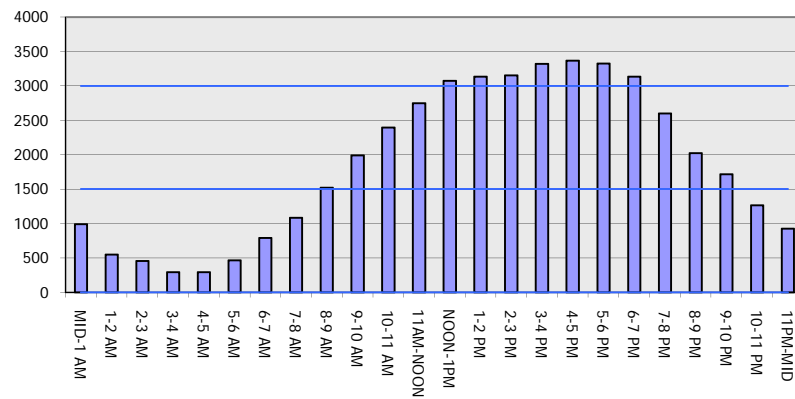
**IH 43/94: BECHER ST TO MITCHELL INTERCHANGE (MILWAUKEE COUNTY)**  
**NIGHTTIME 2 LANE CLOSURE**  
**NO DIVERSION ROUTE (MAX QUEUE METHOD)**

**OCTOBER**

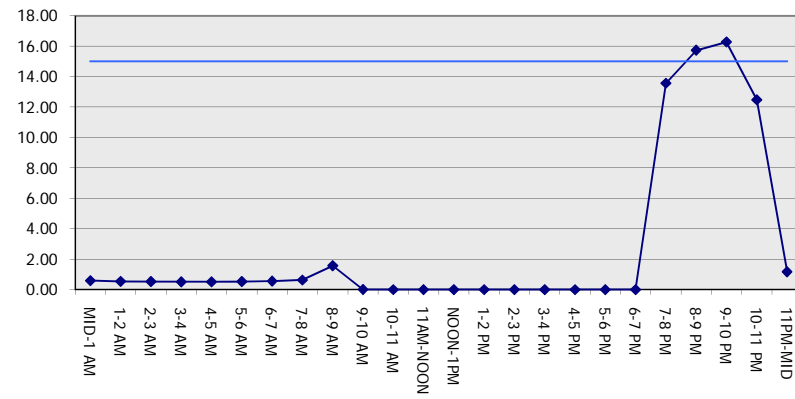
Analyzed for 2009  
 Construction Season

**GRAPHICAL REPRESENTATION OF TRAFFIC MODEL INPUT AND OUTPUT**  
**SUNDAY EASTBOUND DIRECTION**

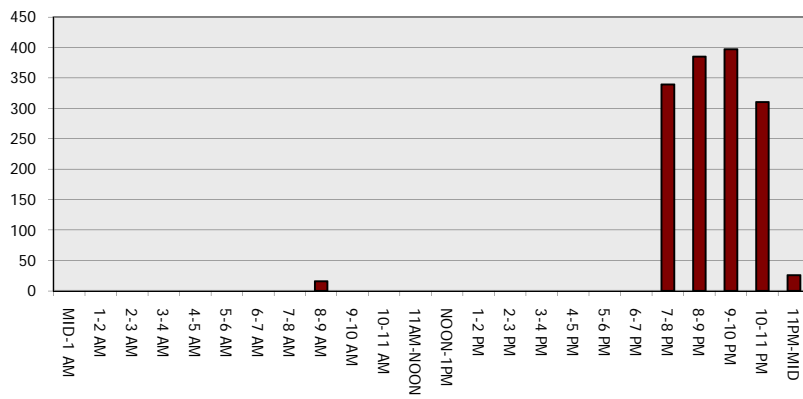
**Main Route - Traffic Demand (Vehicles Per Hour)**



**Main Route Average Delay Per Vehicle (Minutes)**



**Main Route - Average Queue Length (Vehicles)**



**Main Route - Average Speed (MPH)**

