

IH 43/94: BECHER ST TO MITCHELL INTERCHANGE (MILWAUKEE COUNTY) NIGHTTIME 2 LANE CLOSURE NO DIVERSION ROUTE (MAX QUEUE METHOD)	OCTOBER
	Analyzed for 2009 Construction Season

SUMMARY OF TRAFFIC MODEL OUTPUT

SATURDAY WESTBOUND DIRECTION

TIME OF DAY	FLOWS AND CAPACITY IN VEH/HR							AVERAGE SPEEDS IN MPH			
	MAIN ROUTE		SITE CAPA CITY	FLOW		AV.DEL PER VEH (MINS)	AVERAGE QUEUE (VEH)	MAIN ROUTE		SITE	
	DEMAND FLOW	PCT HEAVY		MAIN ROUTE	'DIVER TED'			WITHOUT WORK ZONE	WITH WORK ZONE		
MID-1 AM	1085	0.0	1499	1085	0	4.72	161	69.4	27.1	36.2	
1-2 AM	762	0.0	1500	762	0	0.56	0	69.8	58.8	42.5	
2-3 AM	778	0.0	1500	778	0	0.56	0	69.7	58.7	42.5	
3-4 AM	544	0.0	1500	544	0	0.54	0	70.0	59.4	43.3	
4-5 AM	575	0.0	1500	575	0	0.54	0	70.0	59.3	43.2	
5-6 AM	881	0.0	1500	881	0	0.57	0	69.6	58.5	42.1	
6-7 AM	1338	0.0	1499	1338	0	0.88	0	69.1	53.5	34.7	
7-8 AM	1783	0.0	1499	1783	0	4.27	107	68.5	28.6	30.8	
8-9 AM	2424	0.0	OFF	2424	0	0.13	11	67.8	65.0	65.0	
9-10 AM	2922	0.0	OFF	2922	0	0.00	0	67.1	67.1	67.1	
10-11 AM	3333	0.0	OFF	3333	0	0.00	0	66.6	66.6	66.6	
11AM-NOON	3661	0.0	OFF	3661	0	0.00	0	65.8	65.8	65.8	
NOON-1PM	3920	0.0	OFF	3920	0	0.00	0	64.1	64.1	64.1	
1-2 PM	3685	0.0	OFF	3685	0	0.00	0	65.7	65.7	65.7	
2-3 PM	3796	0.0	OFF	3796	0	0.00	0	64.9	64.9	64.9	
3-4 PM	3591	0.0	OFF	3591	0	0.00	0	66.3	66.3	66.3	
4-5 PM	3529	0.0	OFF	3529	0	0.00	0	66.3	66.3	66.3	
5-6 PM	3254	0.0	OFF	3254	0	0.00	0	66.7	66.7	66.7	
6-7 PM	2940	0.0	1499	1527	1413	15.83+	395	67.1	11.1	36.6	
7-8 PM	2345	0.0	1499	1882	463	12.82+	325	67.8	13.2	31.8	
8-9 PM	1996	0.0	1499	1500	496	16.35+	399	68.2	10.8	30.8	
9-10 PM	1968	0.0	1500	1500	468	16.35+	400	68.3	10.8	30.8	
10-11 PM	2108	0.0	1500	1500	608	16.34+	400	68.1	10.8	30.8	
11PM-MID	1493	0.0	1500	1432	60	15.87+	387	68.9	11.1	30.8	

"OFF" INDICATES NO ROAD WORK (ALL LANES OPEN TO TRAFFIC)

+ INDICATES QUEUEING EXCEEDS USER-SPECIFIED MAXIMUM LIMIT

----- SITE BREAKDOWN DELAYS -----	
BREAKDOWN DURATION (MINS)	0
RANGE OF QUEUE DELAY - MIN (VEH-H) MAX	0.0
AV BREAKDOWNS PER DAY	0.00
AV QUEUE DELAY/DAY (VEH-H)	0.0
AV TOTAL DELAY/DAY (VEH-H)	0.0

----- SITE ACCIDENT DELAYS -----	
BREAKDOWN DURATION (MINS)	0
RANGE OF QUEUE DELAY - MIN (VEH-H) MAX	0
AV BREAKDOWNS PER DAY	0
AV QUEUE DELAY/DAY (VEH-H)	0
AV TOTAL DELAY/DAY (VEH-H)	0

AVERAGE ACCIDENT NUMBERS (PIA/DAY)	
MAIN ROUTE WITHOUT WORKS	0.0305
MAIN ROUTE WITH WORKS	0.0274
'DIVERSION'	0.0045
<small>PIA: Personal Injury Accidents</small>	
IMPACTS ON ROAD USERS	
ROAD USER COSTS PER DAY	\$55,839
CONGESTED HOURS PER DAY*	6

*Delays Exceeding User-Specified Maximum

IH 43/94: BECHER ST TO MITCHELL INTERCHANGE (MILWAUKEE COUNTY)
NIGHTTIME 2 LANE CLOSURE
NO DIVERSION ROUTE (MAX QUEUE METHOD)

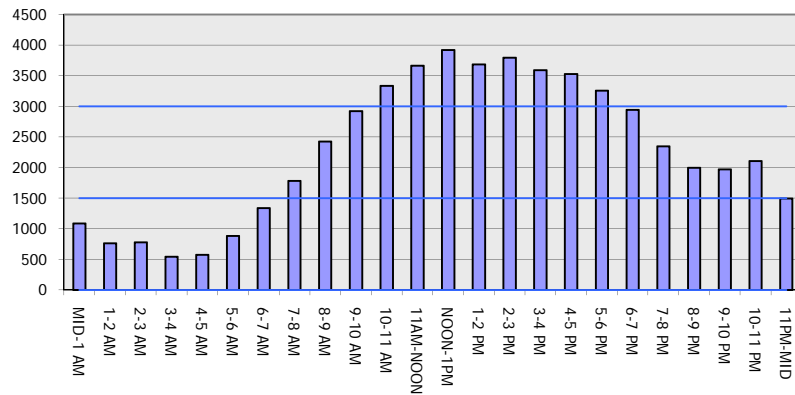
OCTOBER

Analyzed for 2009
 Construction Season

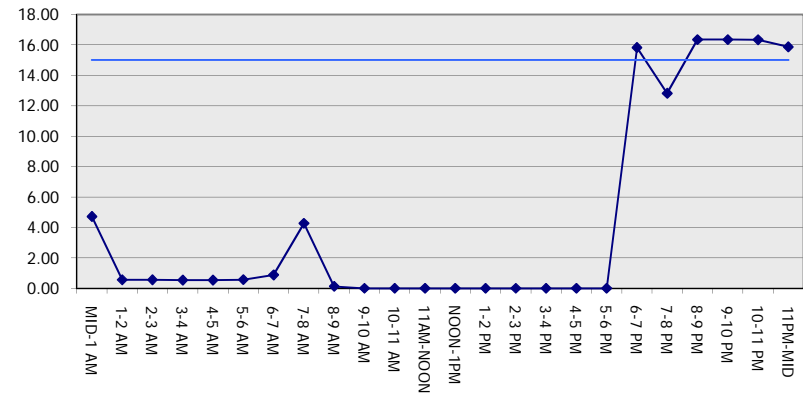
GRAPHICAL REPRESENTATION OF TRAFFIC MODEL INPUT AND OUTPUT

SATURDAY WESTBOUND DIRECTION

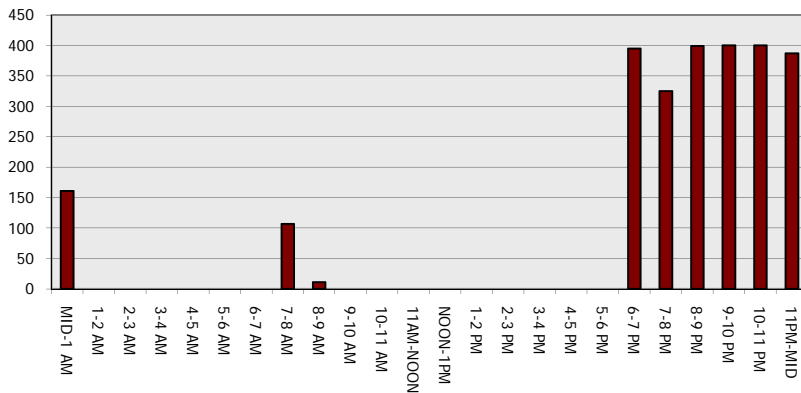
Main Route - Traffic Demand (Vehicles Per Hour)



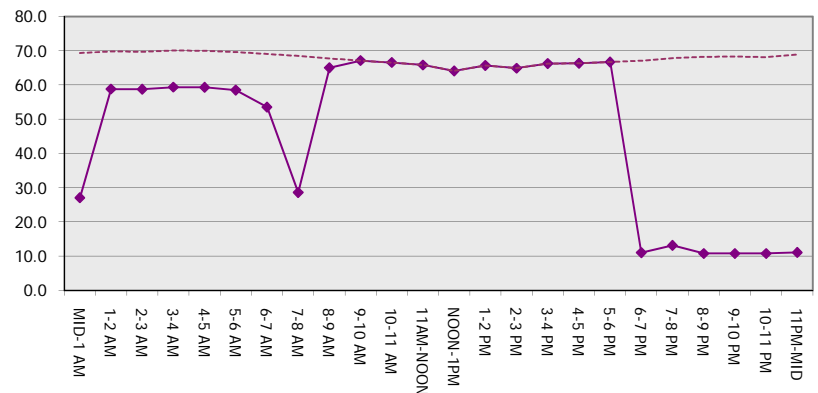
Main Route Average Delay Per Vehicle (Minutes)



Main Route - Average Queue Length (Vehicles)



Main Route - Average Speed (MPH)



IH 43/94: BECHER ST TO MITCHELL INTERCHANGE (MILWAUKEE COUNTY) NIGHTTIME 2 LANE CLOSURE NO DIVERSION ROUTE (MAX QUEUE METHOD)	OCTOBER
	Analyzed for 2009 Construction Season

SUMMARY OF TRAFFIC MODEL OUTPUT

SATURDAY EASTBOUND DIRECTION

TIME OF DAY	FLOWS AND CAPACITY IN VEH/HR						AVERAGE SPEEDS IN MPH			
	MAIN ROUTE		SITE CAPA CITY	FLOW		AV.DEL PER VEH (MINS)	AVERAGE QUEUE (VEH)	MAIN ROUTE		SITE
	DEMAND FLOW	PCT HEAVY		MAIN ROUTE	'DIVER TED'			WITHOUT WORK ZONE	WITH WORK ZONE	
MID-1 AM	971	0.0	1499	971	0	3.97	156	69.6	30.0	37.2
1-2 AM	519	0.0	1500	519	0	0.53	0	70.1	59.4	43.4
2-3 AM	433	0.0	1500	433	0	0.53	0	70.2	59.7	43.8
3-4 AM	372	0.0	1500	372	0	0.52	0	70.2	59.8	44.0
4-5 AM	446	0.0	1500	446	0	0.53	0	70.2	59.7	43.7
5-6 AM	815	0.0	1500	815	0	0.57	0	69.7	58.7	42.4
6-7 AM	1254	0.0	1499	1254	0	0.77	0	69.2	55.1	37.1
7-8 AM	1721	0.0	1499	1721	0	3.40	77	68.6	32.5	30.8
8-9 AM	2307	0.0	OFF	2307	0	0.08	6	67.9	66.2	66.2
9-10 AM	2661	0.0	OFF	2661	0	0.00	0	67.4	67.4	67.4
10-11 AM	3001	0.0	OFF	3001	0	0.00	0	67.0	67.0	67.0
11AM-NOON	3267	0.0	OFF	3267	0	0.00	0	66.7	66.7	66.7
NOON-1PM	3497	0.0	OFF	3497	0	0.00	0	66.4	66.4	66.4
1-2 PM	3346	0.0	OFF	3346	0	0.00	0	66.6	66.6	66.6
2-3 PM	3435	0.0	OFF	3435	0	0.00	0	66.4	66.4	66.4
3-4 PM	3613	0.0	OFF	3613	0	0.00	0	66.2	66.2	66.2
4-5 PM	3727	0.0	OFF	3727	0	0.00	0	65.4	65.4	65.4
5-6 PM	3742	0.0	OFF	3742	0	0.00	0	65.3	65.3	65.3
6-7 PM	3513	0.0	1499	1550	1963	16.46+	412	66.4	10.7	36.6
7-8 PM	2932	0.0	1499	1598	1334	14.33+	379	67.1	12.0	36.0
8-9 PM	2338	0.0	1499	1685	653	14.38+	365	67.8	12.0	33.7
9-10 PM	2296	0.0	1499	1500	796	16.32+	399	67.9	10.8	30.9
10-11 PM	2059	0.0	1500	1529	530	16.22+	396	68.2	10.9	30.9
11PM-MID	1614	0.0	1500	1505	109	15.76+	384	68.7	11.2	30.8

"OFF" INDICATES NO ROAD WORK (ALL LANES OPEN TO TRAFFIC)

+ INDICATES QUEUEING EXCEEDS USER-SPECIFIED MAXIMUM LIMIT

----- SITE BREAKDOWN DELAYS -----	
BREAKDOWN DURATION (MINS)	0
RANGE OF QUEUE DELAY - MIN (VEH-H) MAX	0.0
AV BREAKDOWNS PER DAY	0.00
AV QUEUE DELAY/DAY (VEH-H)	0.0
AV TOTAL DELAY/DAY (VEH-H)	0.0

----- SITE ACCIDENT DELAYS -----	
BREAKDOWN DURATION (MINS)	0
RANGE OF QUEUE DELAY - MIN (VEH-H) MAX	0
AV BREAKDOWNS PER DAY	0
AV QUEUE DELAY/DAY (VEH-H)	0
AV TOTAL DELAY/DAY (VEH-H)	0

AVERAGE ACCIDENT NUMBERS (PIA/DAY)	
MAIN ROUTE WITHOUT WORKS	0.0300
MAIN ROUTE WITH WORKS	0.0259
'DIVERSION'	0.0069

PIA: Personal Injury Accidents

ECONOMIC IMPACT ON ROAD USERS	
ROAD USER COSTS PER DAY	\$62,638
CONGESTED HOURS PER DAY*	6

*Delays Exceeding User-Specified Maximum

IH 43/94: BECHER ST TO MITCHELL INTERCHANGE (MILWAUKEE COUNTY)
NIGHTTIME 2 LANE CLOSURE
NO DIVERSION ROUTE (MAX QUEUE METHOD)

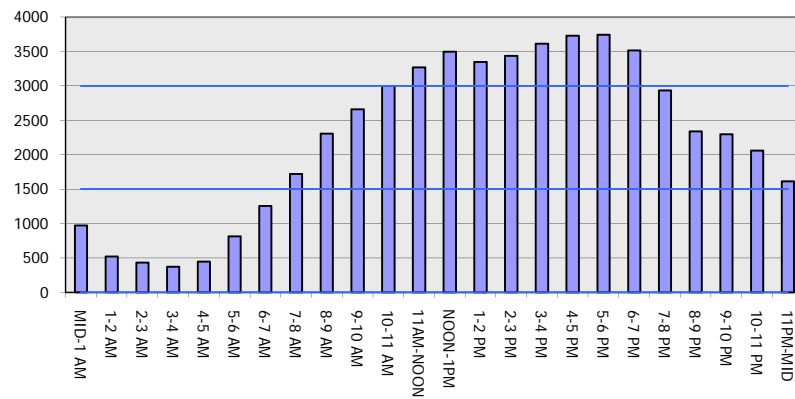
OCTOBER

Analyzed for 2009
 Construction Season

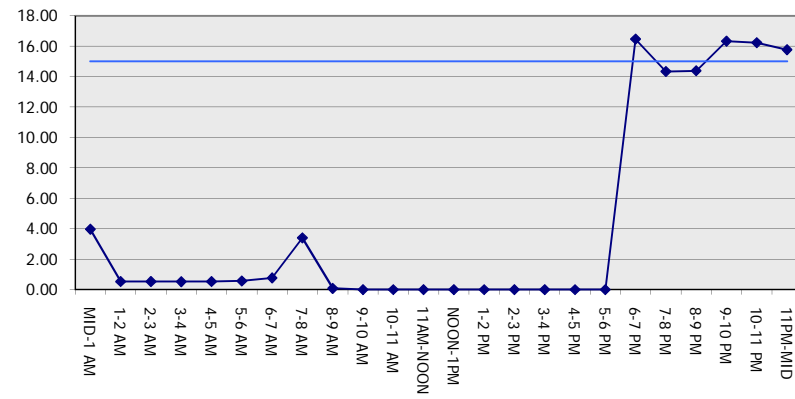
GRAPHICAL REPRESENTATION OF TRAFFIC MODEL INPUT AND OUTPUT

SATURDAY EASTBOUND DIRECTION

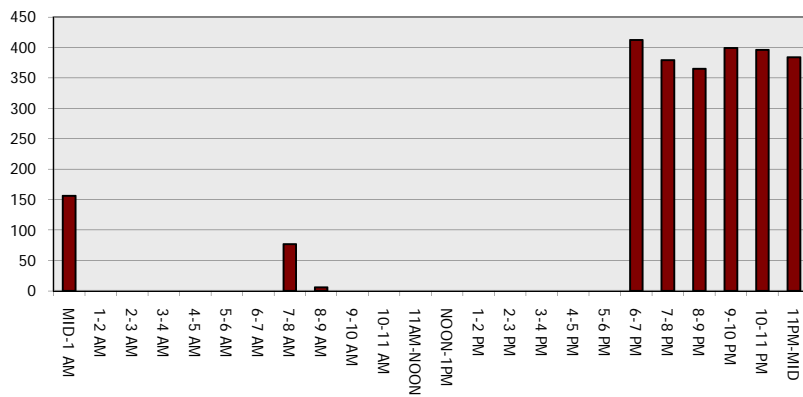
Main Route - Traffic Demand (Vehicles Per Hour)



Main Route Average Delay Per Vehicle (Minutes)



Main Route - Average Queue Length (Vehicles)



Main Route - Average Speed (MPH)

